

CyberPower

PDU POWER PLAY

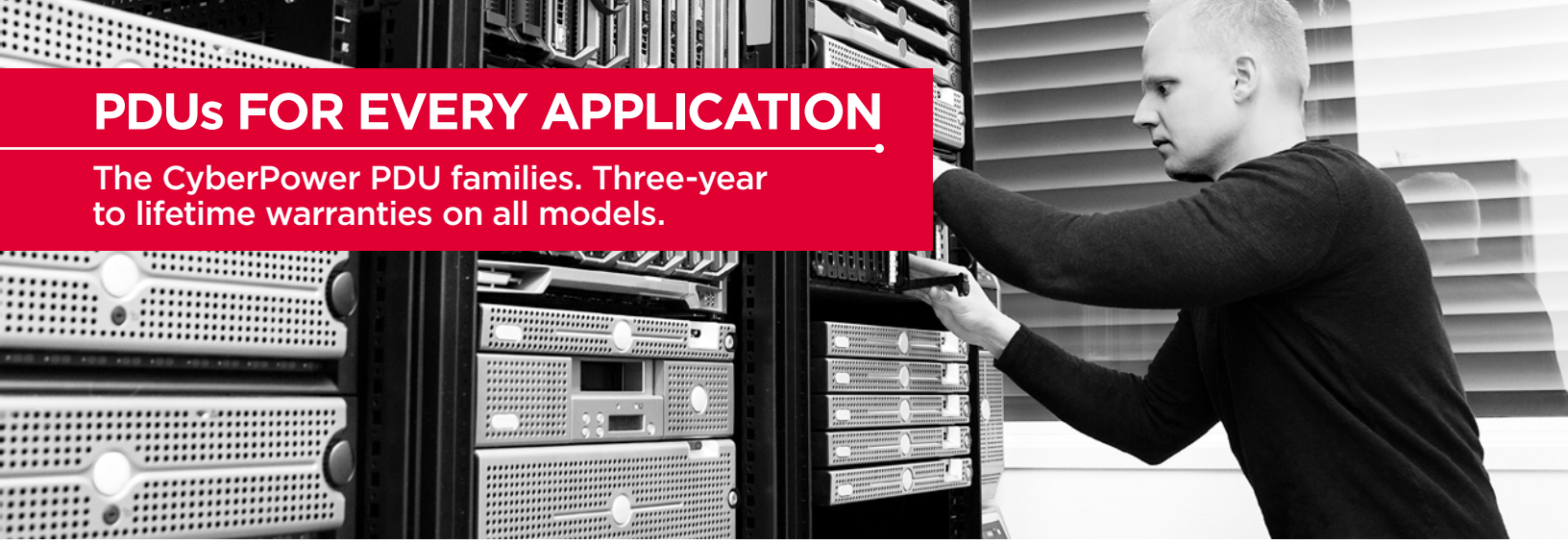
SAVE 20% ON ALL POWER
DISTRIBUTION UNITS

CyberPower offers hundreds of power distribution units to efficiently direct and manage power to IT equipment in all types of rack environments. From basic electrical pass through, to monitoring and managing power from multiple sources, CyberPower has the PDUs to meet your IT goals.

From January 1-March 31, 2017, get a savings power play on PDUs with 20% off all models.*

PDU's FOR EVERY APPLICATION

The CyberPower PDU families. Three-year to lifetime warranties on all models.



BASIC PDUs

Provide reliable power distribution in configurations of 8 to 38 outlets.



METERED PDUs

Shows the aggregate load on the PDU for real-time power monitoring.



MONITORED PDUs

Show the aggregate load on the PDU both locally and remotely.



SWITCHED PDUs

Provide local and remote control of outlets.



METERED ATS PDUs

Prevent downtime with connection to redundant power sources.



SWITCHED ATS PDUs

Provides monitoring and control of power provided by redundant power sources.



MAINTENANCE BYPASS

Manual switch allows for continuous operation during maintenance.

MODEL	CABLE MANAGEMENT	HORIZONTAL & VERTICAL MOUNTING	LOCAL MONITORING	REMOTE MONITORING	ENVIRO-MONITORING**	REMOTE SWITCHING
Basic	●	●				
Metered	●	●	●			
Monitored	●	●	●	●	●	
Switched	●	●	●	●	●	●
Metered ATS	●		●			
Switched ATS	●		●	●	●	●
Maintenance Bypass		●				

**Enviro-monitoring capabilities possible with separately purchased CyberPower Environmental Sensor.

BUILT FOR TODAY'S IT ENVIRONMENTS

Available features to power and manage all types of equipment.

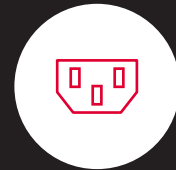
DIGITAL DISPLAY

Understand your power consumption. Amperage, voltage, KW, IP address and other PDU information.



AVAILABLE AMPS

Models available in 15A, 20A and 30A for low-voltage and 10A, 15A, 20A and 30A for high-voltage.

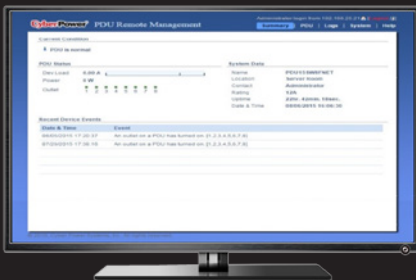


OUTLET OPTIONS

A variety of outlet options for equipment. NEMA 5-15R, NEMA 5-20R, IEC-320 C13, IEC-320 C19 and more.

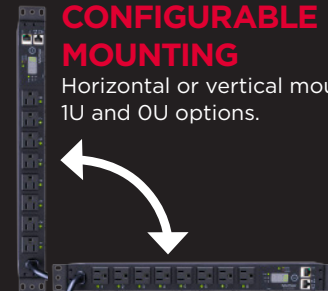
REMOTE CONTROL

Intelligent PDU Web interface gives users the ability to configure, manage and monitor PDUs via the web. Manage load level, outlets and power alerts.



CONFIGURABLE MOUNTING

Horizontal or vertical mounting: 1U and 0U options.



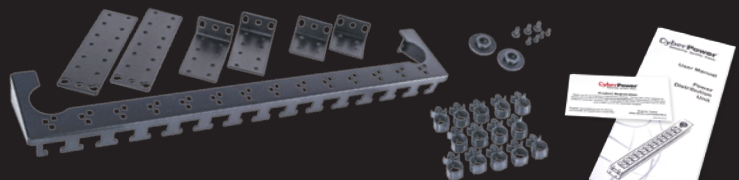
OUR BEST-SELLING PDUs

See the full line of 180+ PDUs at cyberpowersystems.com.

MODEL	VOLTS	AMPS	PLUG TYPE	CORD LENGTH	OUTLETS	OUTLET TYPE	H"xW"xD"	RACK SIZE
BASIC								
PDU15B8R	100-125V	15A (Derated to 12A)	NEMA 5-15P	15'	8	NEMA 5-15R	1.75 x 17.50 x 1.50	1U Rackmount
PDU15B10R	100-125V	15A (Derated to 12A)	NEMA 5-15P	15'	10	NEMA 5-15R	1.75 x 17.50 x 1.50	1U Rackmount
PDU15B6F8R	100-125V	15A (Derated to 12A)	NEMA 5-15P	15'	14	NEMA 5-15R	1.75 x 17.50 x 2.25	1U Rackmount
PDU20BHVIEC12R	200-230V	20A (Derated to 16A)	IEC-320 C20	10'	12	IEC-320 C13	1.75 x 17.50 x 1.50	1U Rackmount
METERED								
PDU15M2F12R	100-125V	15A (Derated to 12A)	NEMA 5-15P	15'	14	NEMA 5-15R	1.75 x 17.50 x 2.25	1U Rackmount
PDU20MVT20F	100-125V	20A (Derated to 16A)	NEMA 5-20P	10'	20	NEMA 5-20R	48.00 x 1.75 x 2.25	OU Vertical
PDU20MVHVT30F	200-230V	20A (Derated to 16A)	NEMA L6-20P	10'	30	IEC-320 C19/C13	60.00 x 1.75 x 2.25	OU Vertical
PDU30MVHVT30F	200-230V	30A (Derated to 24A)	NEMA L6-30P	10'	30	IEC-320 C19/C13	60.00 x 1.75 x 2.25	OU Vertical
MONITORED								
PDU15M8FNET	100-120V	15A (Derated to 12A)	NEMA 5-15P	12'	8	NEMA 5-15R	1.75 x 17.05 x 4.41	1U Rackmount
PDU15MV16FNET	100-120V	15A (Derated to 12A)	NEMA 5-15P	10'	16	NEMA 5-15R	49.00 x 2.20 x 1.75	OU Vertical
PDU20M8FNET	100-120V	20A (Derated to 16A)	NEMA 5-20P	12'	8	NEMA 5-20R	1.75 x 17.05 x 4.41	1U Rackmount
PDU30MVT24FNET	100-120V	30A (Derated to 24A)	NEMA L5-30P	10'	24	NEMA 5-20R	66.50 x 2.20 x 1.75	OU Vertical
SWITCHED								
PDU15SW8FNET	100-120V	15A (Derated to 12A)	NEMA 5-15P	12'	8	NEMA 5-15R	1.75 x 17.05 x 4.41	1U Rackmount
PDU15SWV16FNET	100-120V	15A (Derated to 12A)	NEMA 5-15P	10'	16	NEMA 5-15R	49.00 x 2.20 x 1.75	OU Vertical
PDU20SWVT24FNET	100-120V	20A (Derated to 16A)	NEMA L5-20P	10'	24	NEMA 5-20R	66.50 x 2.20 x 1.75	OU Vertical
PDU30SWVT24FNET	100-120V	30A (Derated to 24A)	NEMA L5-30P	10'	24	NEMA L5-20R	70.00 x 2.20 x 1.75	OU Vertical
METERED ATS								
PDU15M10AT	100-120V	15A (Derated to 12A)	(2) NEMA 5-15P	10'	10	NEMA 5-15R	1.75 x 17.05 x 9.30	1U Rackmount
PDU20M10AT	100-120V	20A (Derated to 16A)	(2) NEMA 5-20P	10'	10	NEMA 5-20R	1.75 x 17.05 x 9.30	1U Rackmount
PDU20MT10AT	100-120V	20A (Derated to 16A)	(2) NEMA L5-20P	10'	10	NEMA 5-20R	1.75 x 17.05 x 9.30	1U Rackmount
PDU15MHVIEC12AT	200-240V	15A (Derated to 12A)	(2) IEC-320 C14	10'	12	IEC-320 C13	1.75 x 17.05 x 9.30	1U Rackmount
SWITCHED ATS								
PDU15SW10ATNET	100-120V	15A (Derated to 12A)	(2) NEMA 5-15P	10'	10	NEMA 5-15R	1.75 x 17.05 x 9.30	1U Rackmount
PDU20SW10ATNET	100-120V	20A (Derated to 16A)	(2) NEMA 5-20P	10'	10	NEMA 5-20R	1.75 x 17.05 x 9.30	1U Rackmount
PDU15SWHVIEC12ATNET	200-240V	15A (Derated to 12A)	(2) IEC-320 C14	10'	12	IEC-320 C13	1.75 x 17.05 x 9.30	1U Rackmount
PDU30SWHVT19ATNET	200-240V	30A (Derated to 24A)	(2) NEMA L6-30P	10'	19	(16) IEC-320 C13, (2) IEC-320 C19, (1) NEMA L6-30R	3.50 x 17.05 x 9.30	2U Rackmount
MAINTENANCE BYPASS								
MBP15A6	100-120V	15A (Derated to 12A)	(2) NEMA 5-15P	6'	6	NEMA 5-15R	2.00 x 17.00 x 3.00	1U Rackmount
MBP20A6	100-120V	20A (Derated to 16A)	(2) NEMA 5-20P	6'	6	NEMA 5-20R	2.00 x 17.00 x 3.00	1U Rackmount
MBP30A5	100-120V	30A (Derated to 24A)	(2) NEMA L5-30P	6'	5	NEMA 5-20R	2.00 x 17.00 x 3.00	1U Rackmount

READY TO RACK

Get up and running quickly with installation instructions, mounting brackets and cable management.



CONTACT | 877.901.1930 | cyberpowersystems.com/pdupowerplay | sales@cpsww.com

CyberPower

©2017 Cyber Power Systems (USA), Inc. All rights reserved. All other trademarks are the property of their respective owners. CyberPower reserves the right to change, without prior notice, marketing programs, product offerings or specifications. *20% discount is offered and redeemed through distribution. Discount is stackable with partner discounts, account level discounts and Gov/Ed 3% discount. Cannot be combined or stacked with new or existing special pricing of discounted opportunities. Promotion lasts January 1–March 31, 2017. Program, promotion, specifications and availability are subject to change without notice. 20% discount based on USD price. Contact your CyberPower representative for complete details. Promotion excludes CPS1215RM, CPS1220RM, CPS1220RMS, CPS1215RMS, and all TAA models. Void where prohibited.