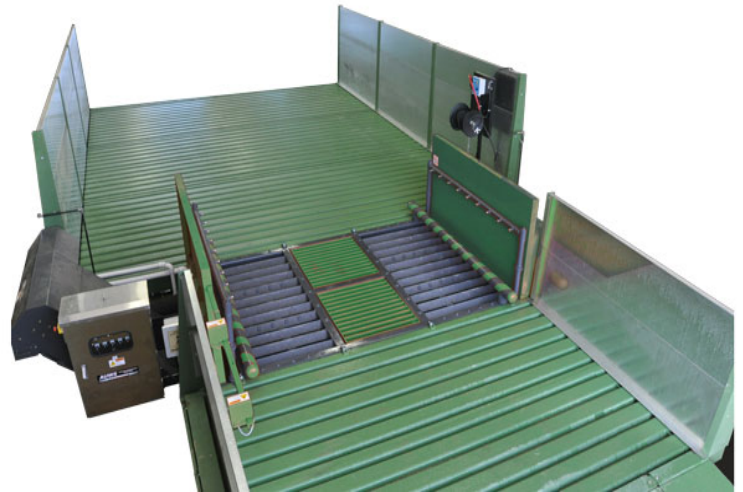


AUWS

The AUWS is an Automatic Undercarriage and Wheel Washing System that solves the difficult task of cleaning heavy mud and dirt from the undercarriage and wheels of vehicles and machinery.

This drive over system is fully automatic and selfcleaning. Both the approach and exit ends of the AUWS are connected to a Hydropad above ground wash rack system. It can be used as a Stand Alone Undercarriage Wash, or the AUWS may be incorporated

into a fully functional wash environment. Either way, it's set in place, connected, and operating within days. Water and solids from the Hydropad's patented side gutter flow into the AUWS where its drag conveyor removes and stacks solids in a "near dry condition" for disposal.



Standard Features

- 6' Walls
- Automatic Start Photo-eye
- Discharge Chute

Optional Features

- Tunnel Arch Spray
- Water Tank Heater
- Sump Pump
- Remote Emergency Stop

Specifications

Dimensions, Inches (cm) 228.2" (579.75) L X 95" (241.3) W X 92.5" (235) H
 Weight, Lbs (kg) 7200 (3266)

	Standard	
Volts (60Hz)	230V-3P	460V-3P
Amps (60Hz)	64	32

Pricing

For complete pricing details, Submit a quote online below.

[Get a Quote](#)

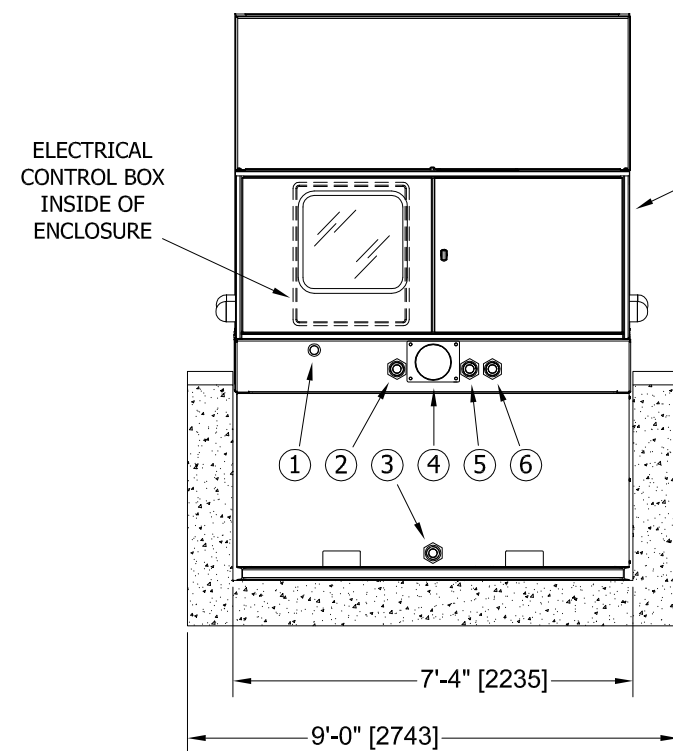
HYDROPAD RATING	"C"	"D"	"E"	"F"	"G"	"H"
2 TONS/AXLE	3'-11"	4'-5"	6'-9"	3'-1"	3'-10"	4'-8"
12 TONS/AXLE	[1196]	[1346]	[2057]	[939]	[1168]	[1422]
30 TONS/AXLE	4'-1"	4'-3"	6'-11"	3'-3"	3'-8"	4'-6"
	[1243]	[1295]	[2108]	[990]	[1118]	[1372]

ADJUSTABLE TIRE GUIDE SPAN	
POSITION 1 - "A"	9'-3" [2820]
POSITION 2 - "B"	11'-1" [3380]

ELECTRICAL OPTIONS	VOLTAGE (3PH)	MOTOR	PUMP OUTPUT (GPM)
60 Hz	208-230V, 460V	15HP	320
		20HP	530
50 Hz	230V, 400V	15HP (11 kW)	320
		25HP (19 kW)	450

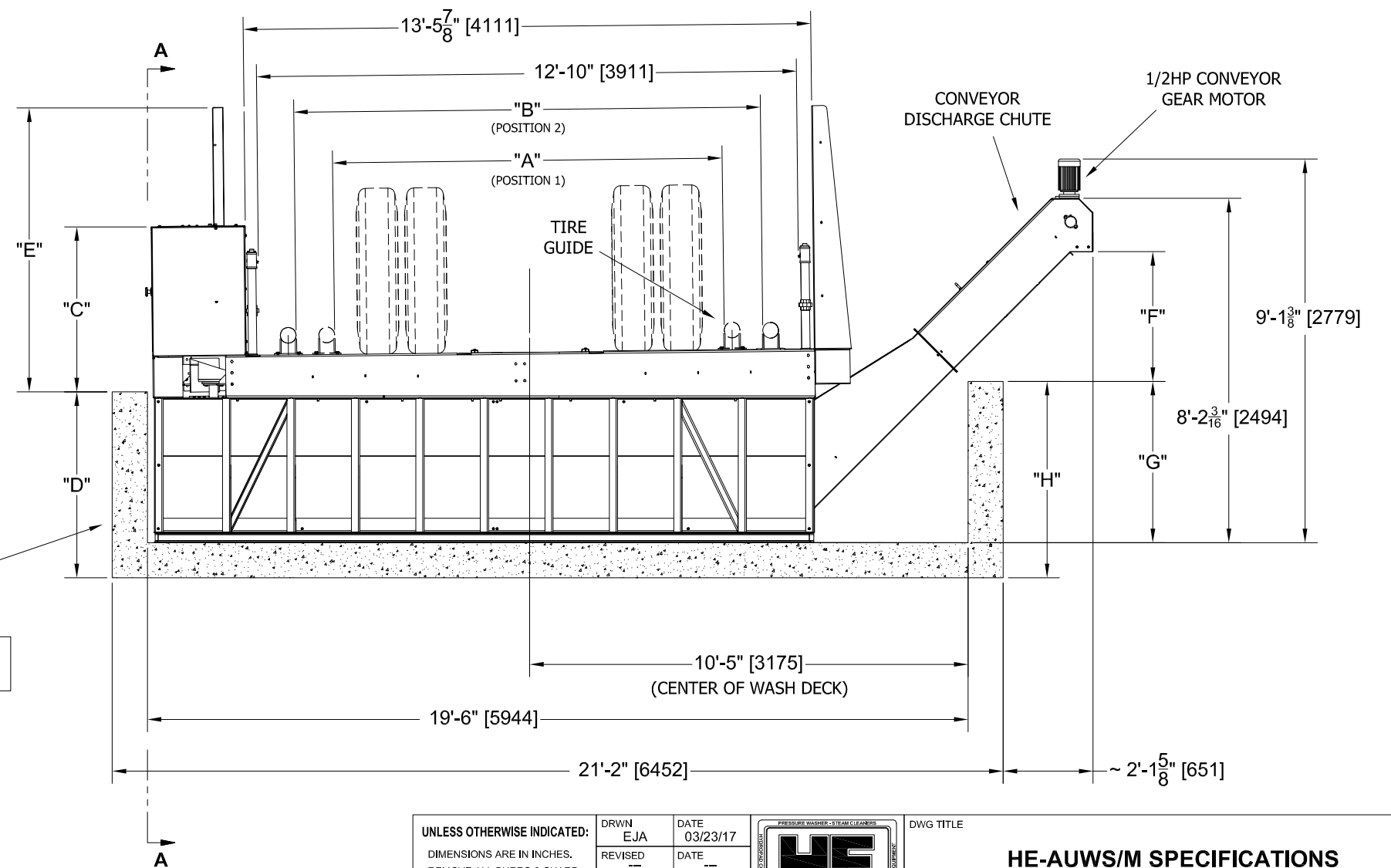
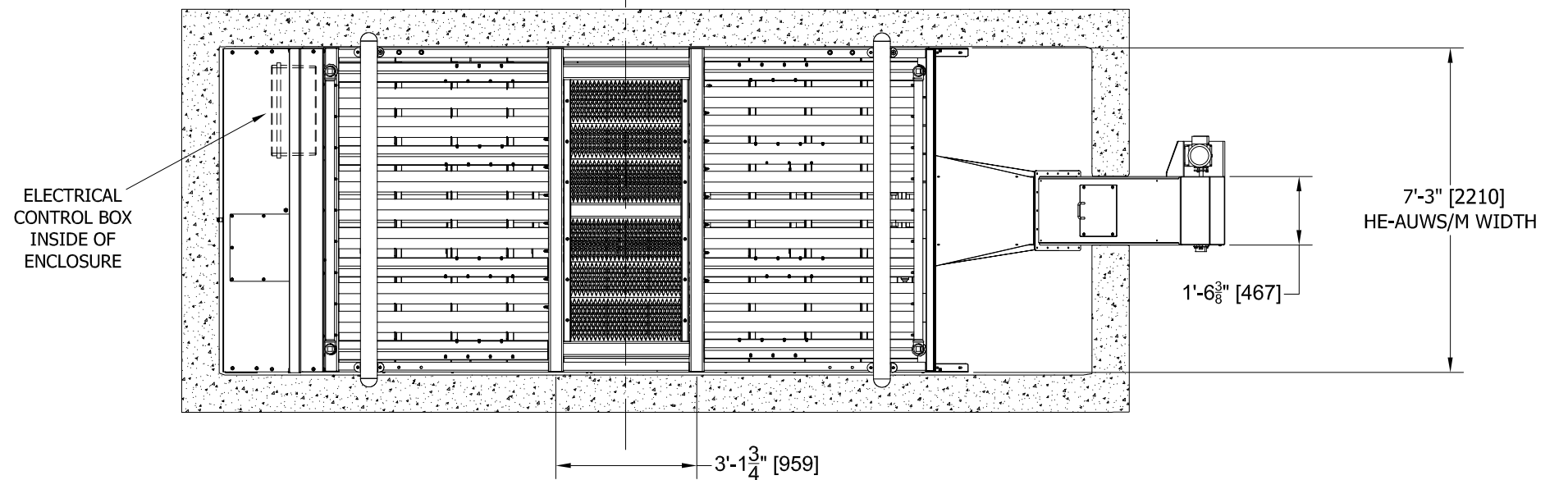
NOTE: HE-AUWS/M UNDERCARRIAGE WASH SYSTEM COMES STANDARD WITH PUMP & MOTOR, 3HP AIR COMPRESSOR, 1/2HP CONVEYOR GEAR MOTOR, & PHOTO EYE SENSORS.

OPTIONAL ITEMS TO INCLUDE: 1/2HP DISCHARGE SUMP PUMP AND 3KW TANK HEATER.



CONCRETE VAULT BY OTHERS
DIMENSIONAL SPECIFICATIONS PROVIDED BY HYDRO ENG. INC.

- ① ELECTRICAL PIPING PORT (2" DIA.)
- ② OUTFLOW TO FILTRATION (1-1/2" FPT)
- ③ TANK DRAIN PLUG PORT (1-1/2" FPT)
- ④ 20 FT. PAD GUTTER HOSE (8" DIA. PORT)
- ⑤ WASTE WATER IN (1-1/2" FPT)
- ⑥ MAKE-UP WATER (1-1/2" FPT)



UNLESS OTHERWISE INDICATED: DIMENSIONS ARE IN INCHES. REMOVE ALL BURRS & SHARP EDGES. TOLERANCES AS FOLLOWS: ± 1/8" ON LINEAR DIMENSIONS ± 1° ON ANGLES	DRWN EJA	DATE 03/23/17		DWG TITLE
	REVISED ---	DATE ---		HE-AUWS/M SPECIFICATIONS
	APPR ---	DATE ---		HYDRO ENGINEERING INC. 865 W. 2600 S., SALT LAKE CITY, UT 84119
	DESIGNER(S) EJA, JPM, RDL	MATERIAL ---		PROJECT / DWG TYPE DIMENSIONAL SPECIFICATIONS
DWG FILE ...CAD\SPECS\HE-AUWS-M\HE-AUWS-M_SPECS.DWG			** THIS PRINT SUPERSEDES ANY PRINT DATED PRIOR TO REVISION DATE ** HYDRO ENGINEERING P/N: HE-AUWS/M DWG P/N: PDHE-AUWS-M_SPECS	