



Create-A-Cove™

Create a linear LED lighting cove with this economical, time saving solution. Easily install it on finished walls in offices, hotel rooms, hallways and lobby areas.



When using Create-A-Cove you can build a lighting cove on a finished wall without the high cost of builders and finishers. Save on time, money and a likely contractor fee. It's made of extruded aluminum with a basic two-part housing that has a round or square face option along with inside and outside corners. It can be installed on finished walls quickly and economically avoiding a huge mess.



- **SAVE Time & Money**
- **Quickly create a lighting cove**
- **Designed for CoveLine™ Linear LEDs**
- **Any size linear run**
- **Features inside & outside corners**
- **Safely install on finished surfaces**
- **ADA Compliant**



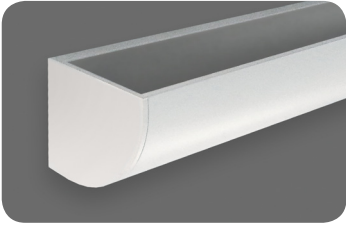
CoveLine™
Linear Luminaires



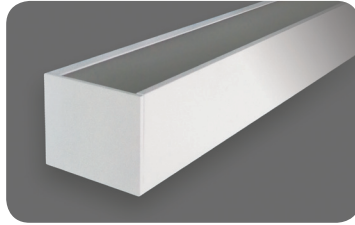
Create-A-Cove is specifically designed to work with our Linear Indoor CoveLine Series luminaires.

Design • Performance • Sustainability

CREATE-A-COVE™



Create-A-Cove Round (CACR)



Create-A-Cove Square (CACS)

CREATE-A-COVE is a surface mounted housing that's part of a cove lighting system for interior design applications. It's specifically designed to use our CoveLine™ Series products. LED CoveLine™ luminaires are sold separately. The modular system allows designers to add Cove Lighting without the additional time and expense of hiring builders and finishers to construct permanent wall coves. It's perfect for creating design accents, wall washes and grazing effects and is beneficial to both large and small areas. **CREATE-A-COVE** features straight runs and 90 degree inside and outside corners that can be run in a continuous linear pattern.

ADA Compliant

How To Order

Submit A Dimensional Drawing: Please submit a drawing of you room layout with the linear feet of each wall and where an inside or outside corner will be installed.

Linear Feet & Corners: Based on your room drawing and dimensions we will create a bill of materials for the installation.

Finish: The fixture's aluminum housing is painted using a durable 8-stage powder coat process. Our standard colors include Black, Bronze, Silver and White. We can also match any custom any Custom Color by providing a color chip or RAL paint reference number.

CoveLine Linear Indoor Lighting: Choose your from any of our CoveLine Series Linear Indoor product line to match your required lighting specification. Match your color temperature, Lumen output and choice of optic beam. Contact your local representative for product details. Visit SolidStateLuminaires.com and click on Rep Locator.

LED Source

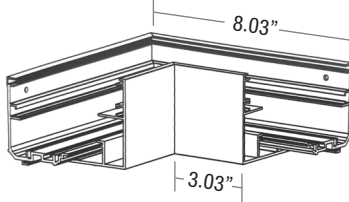


Linear Indoor LED CoveLine™ luminaires are sold separately. Create A Cove system is designed to work with all our indoor linear CoveLine Series:

- ECVLX10V** (0-10V) - 512Lm/ft @ 4K, 5.8W/ft, 2 optics
- ECVL** - 380Lm/ft @ 4K, 3.5W/ft, 120° optic
- ECVLX** - 600Lm/ft @ 4K, 5.5W/ft, 2 optics, 10 LED colors
- CVL** - 930Lm/ft @ 4K, 10W/ft, 7 optics
- CVLX** - 1025Lm/ft @ 4K, 11W/ft, 2 optics

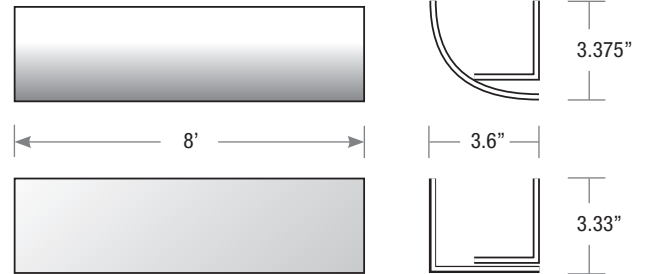
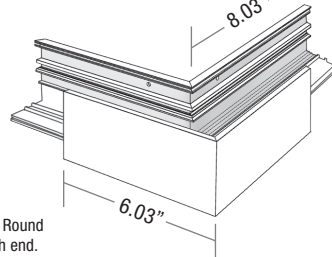
Dimensions

Inside Corner



Inside and Outside corners measure the same length for both Round and Square faces. Note that the Wall Cleat is 2" longer at each end.

Outside Corner



Round and Square in 8 foot and 4 foot lengths can be modified in the field.

Note: A drawing with space dimensions is required to obtain a quote for Create-A-Cove.

CATALOG NUMBER

CAC		Example: CACR-225FT-BR	
model	length in feet*	color	option
CACR	CREATE-A-COVE ROUND	XX-FT* Indicate total run length	CL Clear Lens
CACS	CREATE-A-COVE SQUARE	WH White	
		SL Silver	
		BZ Bronze	
		BK Black	
		CC Custom Color	

* A drawing with space dimensions is required to obtain a quote for Create-A-Cove.

* A drawing with space dimensions is required to obtain a quote for Create-A-Cove.

Accessories

- _____ **SSL-ICR** Inside Corner Round
- _____ **SSL-ICS** Inside Corner Square
- (Indicate quantity needed.) _____ **SSL-OCR** Outside Corner Round
- _____ **SSL-OCS** Outside Corner Square

Create-A-Cove
View Video
Installation



Other items included:

- End Caps to end runs (if needed)
- Alignment Keys with Screws
- Light-leak Tab Inserts
- 8/32 Set Screws / Driver
- 1/2" W x 1/4" thick Foam Tape
- Touchup Paint

SS-CAC-0817