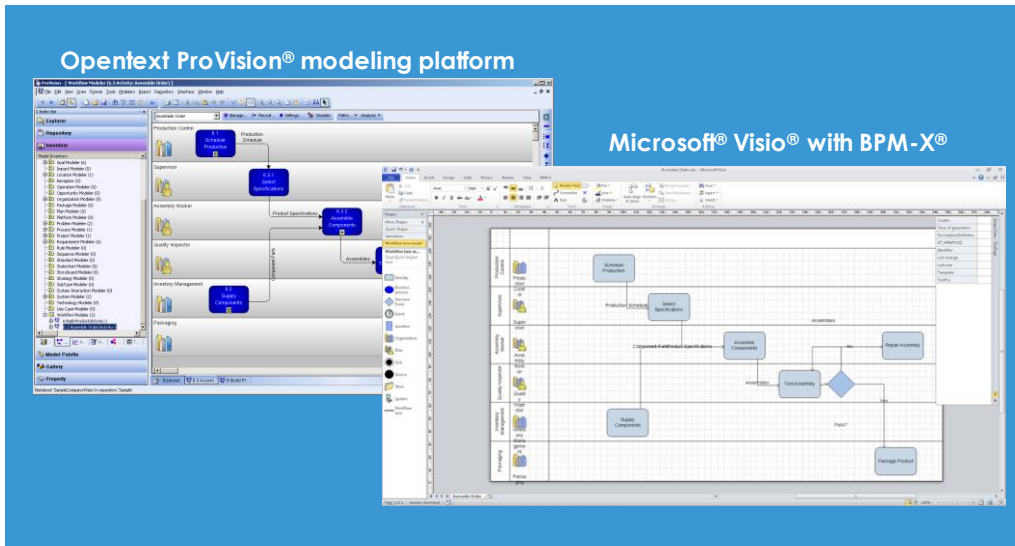


BPM-X solution for OpenText ProVision®



You will learn how to

- Leverage your existing modeling landscape of different tools and investments in data while saving license and maintenance costs
- Use Visio® as a professional, ProVision®-compliant modeling tool
- Satisfy the needs of process owners, consultants, and analysts
- Build your own solution with a best-of-breed approach for a mixed environment using ProVision® together with Visio® and other EA and BPM tools

More flexibility for enterprise analysis and modeling

Enterprise architecture (EA) and business process management (BPM) is a collaborative corporate effort and involves different types of users. Process owners, consultants or business analysts mostly favor easy-to-use tools for e.g. processes mapping or managing changes. Enterprise architects and process engineers may prefer more complex modeling suites like OpenText ProVision®.

BPM-X® is an enterprise integration, modeling and analysis suite offering the accessibility and familiar comfort of Microsoft® Office Visio® aligned with a strong

methodical control and modeling safety typically found only in much more costly tools. Apart from that, the BPM-X Designer seamlessly integrates with Microsoft® SharePoint® technology and offers an optional model repository and comes at a highly competitive price. Flexibility and real openness makes BPM-X® an attractive choice for many enterprise management initiatives.

"How to have more acceptance and lower modeling costs?"

Benefits of using BPM-X® together with ProVision®

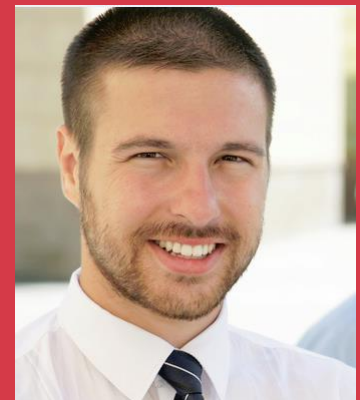
There are a number of good strategic and economic reasons to consider BPM-X Designer.

Strategic advantages

- Have satisfied users and simplify your project lifecycle.
- Enhance the acceptance for your initiative by including business users and process owners.
- Boost your productivity as a result of increased usability for process modelers.
- High level of conformity with respect to the OpenText ProVision® modeling standards.

Economic profits

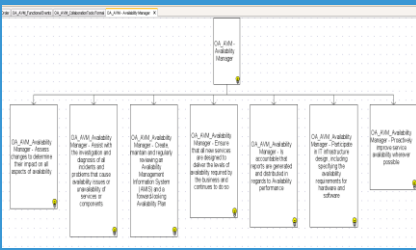
- Optimize your licenses fee structure and maintenance efforts by using enhanced Visio® for professional modeling and process mapping.
- Lower training and support costs.
- Optimize your TCO for ProVision®-based enterprise management landscapes.
- Attractive pricing even for small budgets.
- Share model data and diagrams between ProVision® and other EA, BPM or BPA tools to lower efforts for manual maintenance of data.



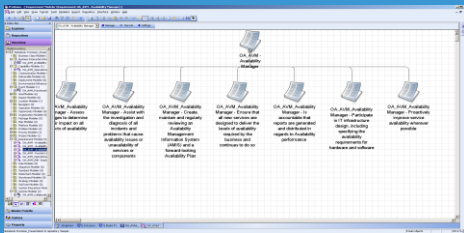
"The BPM-X solution significantly reduces your license and maintenance costs but also gets the commitment of your business users compared to a ProVision®-only solution."

TransWare Software Solutions AG
Germany: +49 (6381) 916-0
Intl./US: +1 (408) 916-1189
Fritz-Wunderlich-Strasse 49b
66869 Kusel, Germany

Not just Visio®. An ARIS® model...



...transformed to ProVision®



Use cases we focus with this solution

BPM-X® allows you to build scalable EA and BPM solutions: starting with Visio® on a consultant's laptop up to a full-blown enterprise repository with governance workflows, versioning, and analysis tools.

Export the ProVision® notebook to Visio®
Often project deliverables have to be created in Microsoft® Visio® format. The data can be exported from ProVision® by simply using the common interchange format (CIF) XML export. BPM-X® reads this file (and some configuration data describing the modeling conventions) and creates the Visio® files on-the-fly with native ProVision look & feel.

Migrate from legacy Visio® to ProVision®
BPM-X's strong conversion engine transforms any model formats like Visio® into the ProVision® format, much better than native ProVision® does. While converting the data, the smart engine translates existing contents like models, properties and the graphical shapes to ProVision®. This allows for the harmonization of model data of different model types into ProVision® standards.

Employ Visio® as a smart front-end

When using the BPM-X Designer add-in, Visio® is extended for full modeling support. It understands ProVision® object definitions, occurrences, all data properties and drill-downs, multiple method and content languages, all ProVision® model types including BPMN 2.0. BPM-X pushes Visio® to the level of a professional modeling tool without changing the spirit of Visio®.

Process bi-directional integration

With BPM-X's powerful integration capabilities, Visio® or other EA, BPM tools can be seamlessly linked with ProVision®. Data are mirrored from ProVision® to and back.

Publishing ProVision® data to open formats

It is convenient to use BPM-X for the publishing of ProVision® data with HTML, SharePoint® or web-based reporting.

Replace ProVision® by the BPM-X solution

ProVision® can be fully replaced by using the BPM-X® enterprise repository based on SharePoint® or Microsoft® SQL Server®.

Products used to build solutions

BPM-X delivers turnkey solutions for quick deployment in the client's tool landscape out of the shelf, optimized business value with low project risk and TCO. Manifold solution scenarios can flexibly be built with BPM-X software components:

- **BPM-X Designer** for professional modeling compatible with ARIS® formats, standards, and conventions.
- **BPM-X Converter** as software bridge to build migration and integration scenarios with ProVision® and Microsoft® tools.
- **BPM-X Publisher** for publishing model data to intranets using plain HTML or optionally SharePoint® document libraries.
- **BPM-X Administrator** to manage modeling conventions such as ARIS® filters, based on our open meta-model.
- **BPM-X Reporting Services** for web-based and office integrated, professional enterprise reporting of model data.
- **BPM-X Repository** based on SharePoint® or MS SQL for optionally setting up a professional enterprise repository.

Technology

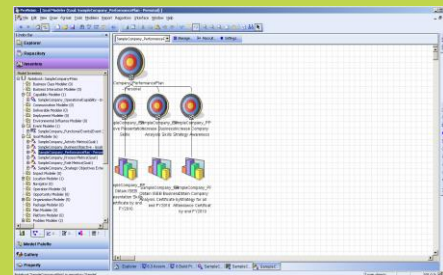
BPM-X Designer features Visio® 2010, 2003 running on Microsoft® Windows® 7, 8.

License model

For every Visio® user a BPM-X Designer node-locked license is needed. Other products have specific license models.

Legal notice: The product names used in this document are for identification purposes only. All trademarks and registered trademarks are the property of their respective owners. The following trademarks may or may not be marked in this document: ProVision is a trademark or registered trademark of Opentext Corp. in Canada and in many countries all over the world. BPMN is a trademark of the Object Management Group Inc. in the United States and/or other countries. BPM-X is a trademark or registered trademark of TransWare AG in Germany. Microsoft, Office 365, SharePoint, SQL Server, Visio, Windows and Windows Azure are trademarks or registered trademarks of Microsoft Corporation in the United States and/or other countries. Other company, product, and service names may be trademarks, registered trademarks, or service marks of other owners.

Use ProVision® with your specific modeling language and conventions



BPM-X®

Integrate people and information

Replicate all model data into Microsoft Visio®, not only Workflow models.

