

PRESS RELEASE

Extreme Weather and New Engines Drive Growing Demand for Stertil-Koni SKYLIFT Wash Bay in Fleet Maintenance Shops

For Immediate Release

STEVENSVILLE, MD February 20, 2018 –

The combination of extreme weather conditions and new engines that tend to run hotter, has increased the demand across North America for vehicle lifts that are specifically engineered for wash bay conditions – this according to a new industry overview from Stertil-Koni, the leader in heavy duty vehicle lifts.

Here's what's fueling the change: "When road grime accumulates on the undercarriage of work trucks, buses and new hybrid/electric vehicles, heat builds up and can decrease engine efficiency. That in turn necessitates more frequent washings to keep battery and engine systems cool and free from mud, salt and other contaminants," noted Peter Bowers, Stertil-Koni technical sales support manager.



When undercarriages are not cleaned frequently, the lifespan of a vehicle's engine and battery system can be cut short. The special hot dip steel coating on the platform SKYLIFT Wash Bay model is corrosion- and water-resistant

Cleanliness is the answer. And, that's why municipalities, state agencies, corporate fleets, the U.S. Military, school bus fleets, transit agencies and corporate trucking groups are increasingly seeking a solution to keep the undercarriages of their vehicles free of debris.

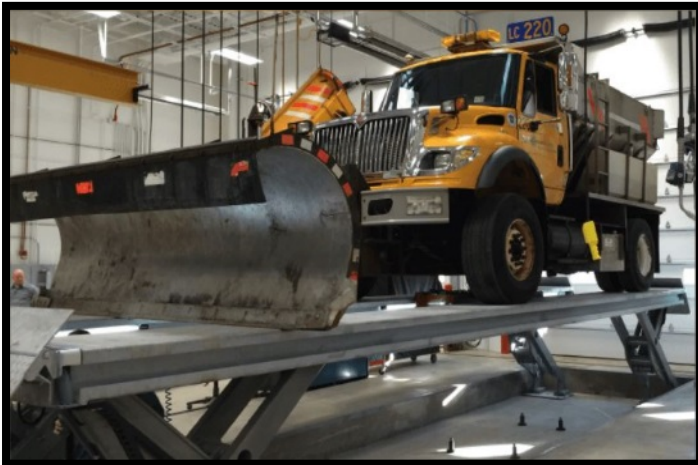
One option that has gained strong recognition and usage is the Stertil-Koni SKYLIFT Wash Bay model. This heavy duty platform lift is water-resistant and features hot-dip galvanized platforms, three-layer mono-pox coated lift supports and a stainless steel, water-resistant, lockable control box to provide superior protection for the electronic controls.

The product's design includes two independent runways, no crossbeams, overhang or base frame and its modular design allows for flush or surface mounted. Flush mounting permits heavy duty vehicles with particularly low ground clearance to easily drive directly onto the SKYLIFT, thus facilitating quick and easy access to a vehicle's undercarriage.

Space is another consideration for facilities. The SKYLIFT, a true vertical rise lift, generally takes up less room than a parallelogram lift and also has reduced foundation requirements. "What's more," added Bowers, "it's

relatively easy to install, offers greater maneuverability for shop technicians from all angles of the vehicle, and requires minimal maintenance.”

The SKYLIFT’s platform lengths are available from 23 feet up to 48 feet and, depending on the model, can lift up to 78,000 lbs. in a standard version or up to 156,000 lbs. in a tandem configuration.



Flush mounting allows heavy duty vehicles with particularly low ground clearance to easily drive directly onto the SKYLIFT

Naturally, durability and adaptability are key.

“Providing additional flexibility,” added Bowers, “the Skylift Wash Bay is engineered for either outside vehicle service or for use in a steam-cleaning bay.”

Concluded Dr. Jean DellAmore, president of Stertil-Koni, “We pride ourselves in delivering the broadest range of safe, durable, ALI-certified heavy duty vehicle lifting systems for our customers. It’s an approach we call ‘Freedom of Choice’ and illustrates our ability to respond to customer needs with the very best in heavy duty lifting systems to meet their specific requirements. In the instance of

ALI-certified, water-resistant vehicle lifts, our customers can rest assured that with the Stertil-Koni Skylift Washbay version, they have a safe, long-lasting solution to ensure that their vehicles can be serviced and cleaned efficiently and safely.

###

About Stertil-Koni

Stertil-Koni is the market leader in heavy duty [vehicle lifts](#), notably [bus lifts](#) and [truck lifts](#), and proudly serves municipalities, state agencies, school bus fleets, major corporations, the U.S. Military and more. Stertil-Koni's breadth of products meets all ranges of lifting needs and includes [portable lifts](#) such as [mobile column lifts](#), 2-post, 4-post, [inground piston lifts](#), [platform lifts](#), and its axle-engaging, inground, scissor lift configuration, ECOLIFT. The company’s innovative, inground telescopic piston DIAMONDLIFT is now available with an optional Continuous Recess system, ideal for low clearance vehicles. Stertil-Koni USA is headquartered in Stevensville, Maryland with production facilities in Europe, The Netherlands, and in Streator, IL.

Contact: Paul D. Feldman 800-336-6637 Paul.Feldman@Stertil-Koni.com