



ASG CCS Ultra Low Torque Fastening System

Visit our [Vimeo](#) or [YouTube](#) page to see the CCS demo.

- Ultra low torque controlled screwdriver
- Great for S0.6 screws and larger
- Complete system includes tool, cable, controller, and power supply
- Small, lightweight, and fast (up to 1500 RPM)
- Data collection and graphing
- Easily mounts to robotic assembly systems
- Control the system through PC or PLC
- Program up to 16 different jobs
- Customizable screw finder for vacuum pickup

| | ASG-CCS1500-45-SY | ASG-CCS1500-180-SY |
|----------------------------|---------------------------------------|------------------------------------|
| Screw Size | S0.6 - M1.2 | M1.2 - M2.0 |
| Motor | Brushless DC | |
| Mode | 3 Modes (Normal, Tapping, High Speed) | |
| Torque Range | 10.0-45.0 mN.m (1.42-6.37 ozf.in) | 30.0-180.0 mN.m (4.25-25.6 ozf.in) |
| Maximum Rotation Speed | 1500 RPM | |
| Dimensions | 30 x 43 x 124mm without connector | 30 x 43 x 152mm without connector |
| Weight | 280g | 405g |
| Reversible | Yes | |
| Program Memory | 16 | |
| Input Signal (8) | Program: 4Bits | |
| | Tighten/Loosen: 2Bits | |
| | Rotation: 1Bit | |
| | Option: 1Bit | |
| | Reserved: 2Bits | |
| Output Signal (8) | Torque up: 1Bit | |
| | Busy: 1Bit | |
| | Error: 5Bits | |
| | Reserved: 1Bit | |
| Approximate Output Voltage | DC24V (3A) | |

ASG Ultra Low Torque Fastening System

System Components



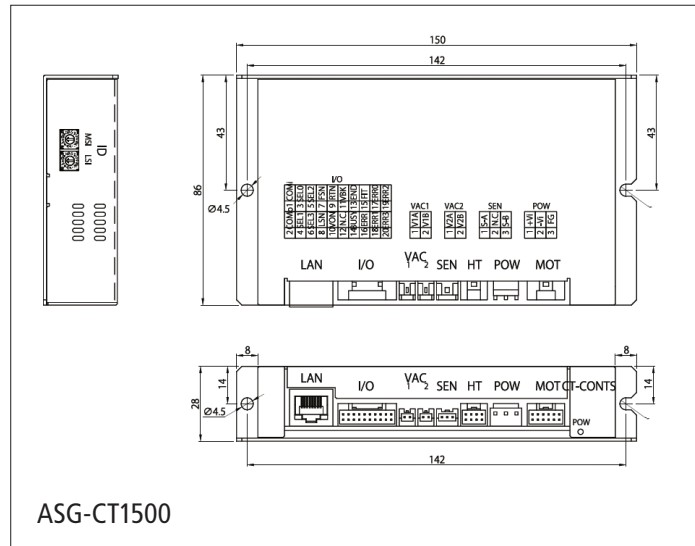
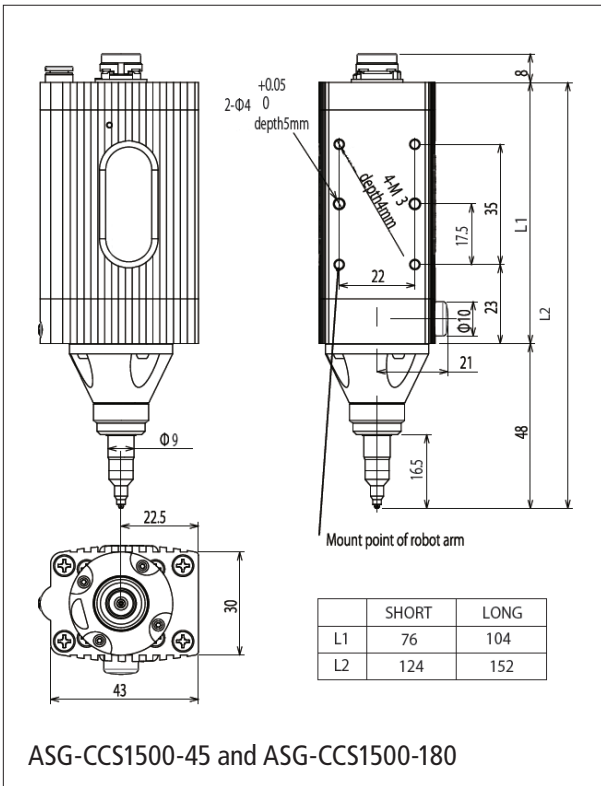
ASG-CCS1500-45-SY

- CCS Tool 10-45 mN.m
- Controller
- Tool Cable
- Power Supply Cable
- Software
- Power Supply
- Crossover Cable

ASG-CCS1500-180-SY

- CCS Tool 30-180 mN.m
- Controller
- Tool Cable
- Power Supply Cable
- Software
- Power Supply
- Crossover Cable

Dimensions



ASG Ultra Low Torque Fastening System

Accessories

Visit our website for additional accessories.



Bits

| ASG Number | Size |
|-------------------|------|
| ASG-AC1500-PB00VL | #00 |
| ASG-AC1500-PB0VL | #0 |
| ASG-AC1500-PB1VL | #1 |



Robot I/O Cable

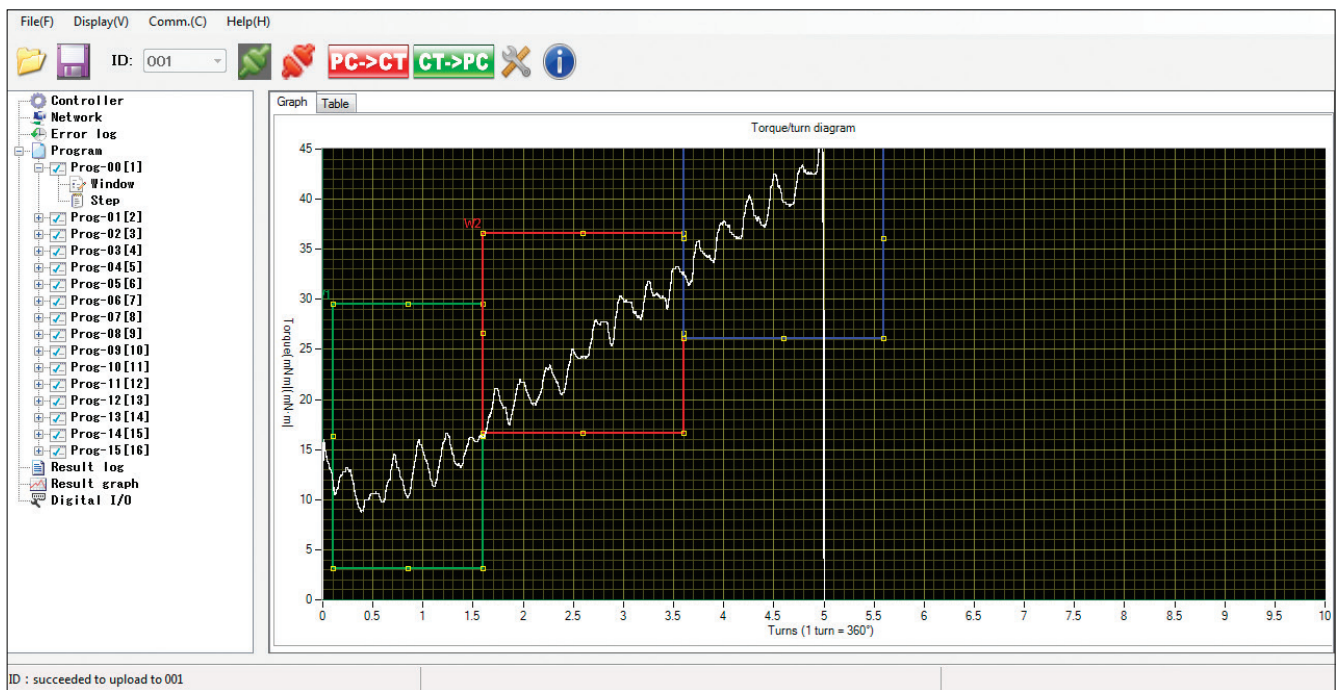
| ASG Number |
|---------------|
| ASG-AC1500-IO |

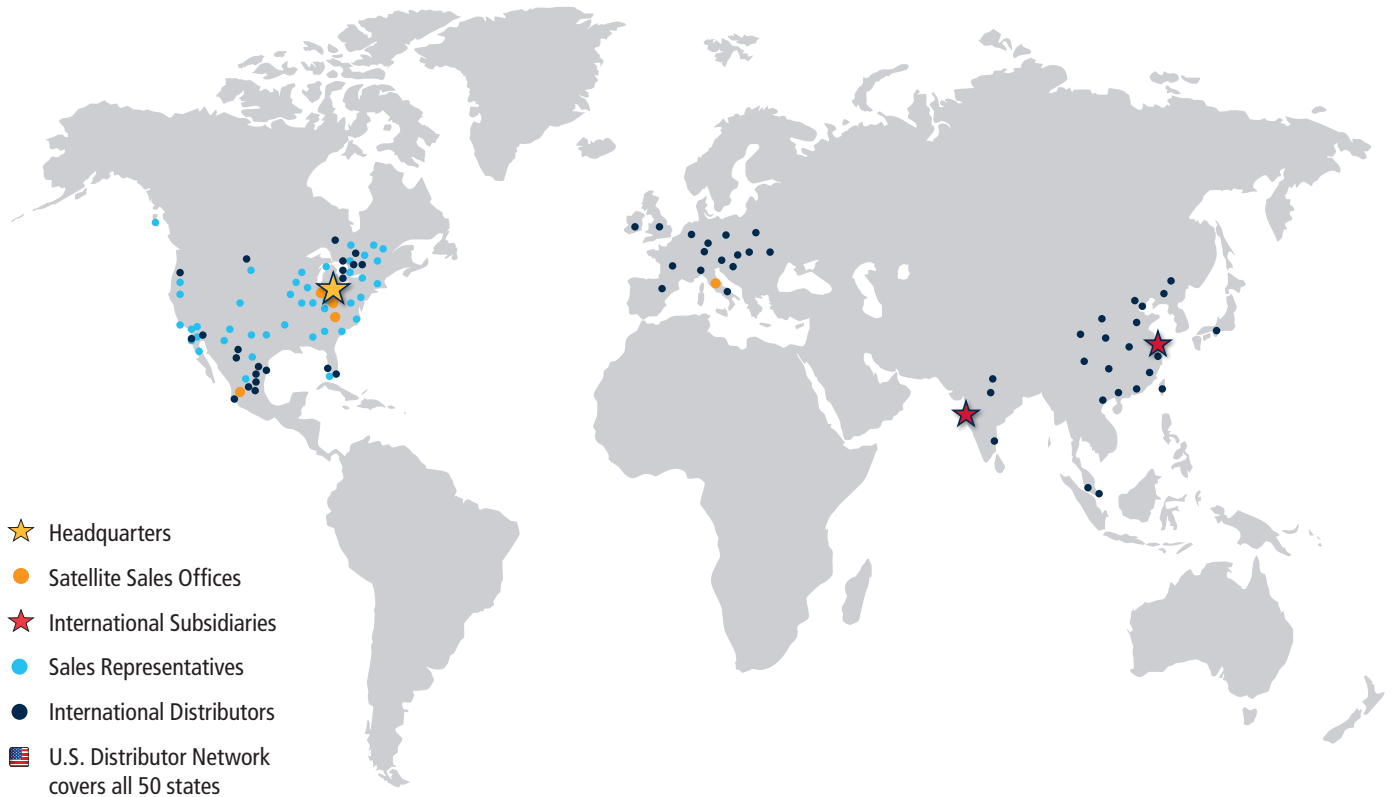


Custom Finder

| ASG Number |
|---------------|
| ASG-AC1500-CF |

Software





Our footprint covers the globe!

Global Support

ASG employs a team of technical experts to provide support, repair, calibration and preventative maintenance services. We welcome the opportunity to provide assistance by telephone or online chat Monday through Friday, 8 a.m. to 5 p.m. (U.S. Eastern Time) excluding holidays.

ASG maintains subsidiaries in Shanghai, China and Mumbai, India, and sales offices in Mexico and Europe to provide direct support to our international customers. We work together with our global Field Sales Representative and Distributor Network to help customers standardize their assembly equipment and processes around the world.

Distributor:



Products and Solutions for Assembly

December 2018

ASG USA Headquarters
 Jergens Way, 15700 S. Waterloo Road
 Cleveland, OH 44110-3898 USA
 Phone: (216) 486-6163
 Toll-free USA: (888) 486-6163
 Fax: (216) 481-4519
 Email: asginfo@asg-jergens.com

ASG China Subsidiary
 Unit 301 Level 3, Block A
 A-REIT City at Jinqiao, 200 Jinsu Road,
 Shanghai, Pudong 201206 CHINA
 Phone: +86 21 58209175
 Fax: +86 21 58353696
 Email: rafael.qi@asg-jergens.com

ASG India Subsidiary
 B-607, Mahaavir Icon,
 Plot No. 89, Sector 15, C.B.D. Belapur
 Navi Mumbai-400 614, Maharastra INDIA
 Phone: +91 22 27572998
 Mobile: +91 98 334 04986
 Email: jpk@asg-jergens.com