

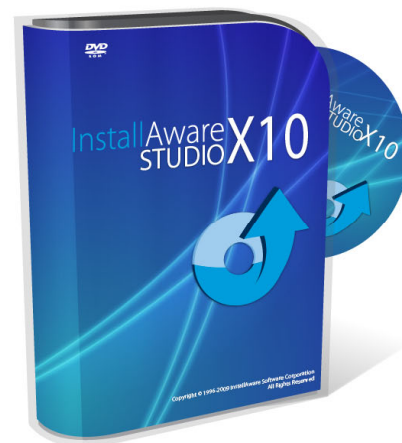
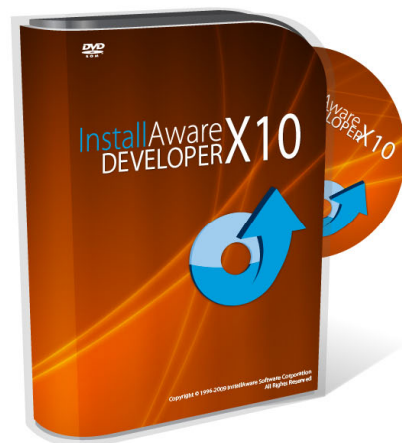
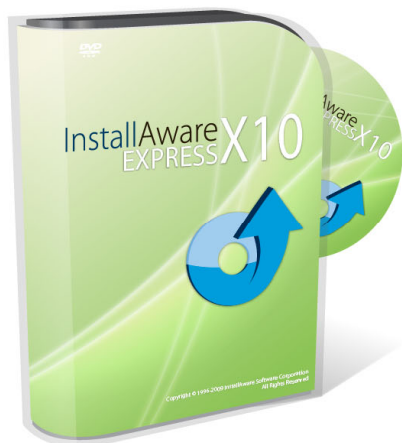


InstallAware
for Windows Installer

Windows Installer without Rocket Science

InstallAware

for Windows Installer, Native Code, MSIX, Virtualization





Key Objectives

- Who is Install**Aware**?
- Grow Software Margins: Save on Bandwidth
- Delight Developers: Convenience and Simplicity
- Maximize Revenue: Grow Exposure, Monetize
- Agile Builds Simplified
- Grow Software Margins: Save on R&D
- Install**Aware** X10 Feature Highlights
- Available Editions and Pricing



InstallAware
for Windows Installer

Windows Installer without Rocket Science

Who is InstallAware?



Who is InstallAware?

Founded in 2003 by former InstallShield employees who sensed that **InstallShield** was **not leading** the market:

- Lack of innovation
- Hard to learn and use
- Thousands of outstanding work orders
- Outdated user interface and setup engine
- Copy-cat products were not innovating either



What Makes Install**Aware** Unique?

InstallAware is the:

- **Fastest**
- **Most Scalable**
- **Most Pleasing**
- **Easiest to Program**

Windows Installer solution.

Install**Aware** improves the end-user experience
and the development experience.



What Makes InstallAware Unique?

InstallAware provides leadership by:

- Keeping standards from driving your processes
- Helping you do with your setups what was not possible before
- Providing a powerful abstraction of Windows Installer technology in MSIcode scripting
- Providing the fastest, most scalable, and most flexible installation engine for Windows



What Makes InstallAware Unique?

InstallAware makes it much **easier** to support **Windows Installer**:

- No **proprietary database** or **custom action programming** is required to build installations
- InstallAware **abstracts all MSI internals** into an **intelligible script** called MSICODE!
- InstallAware automatically **builds logo-compliant** Windows Installer packages
- InstallAware builds setups that can be deployed unattended via **Group Policy** or **Direct Deploy Push Technology**
- InstallAware lets you integrate your business logic into your installer and **make intelligent decisions at install-time**



What Makes InstallAware Unique?

InstallAware has its own Native Code Setup Engine:

- Runs where Windows Installer is disabled or damaged (**Windows Safe Mode, corrupt system**)
- Supports **multiple simultaneous** installations
- **Fastest installer** for Windows
- **Easiest development** paradigms

InstallAware has its own 64-bit Compression Engine:

- Compress files up to **90% smaller**
- Compress files down to **half of their already-compressed** Microsoft sizes, such as for Microsoft SQL Server and .NET Framework
- **Smallest installer** for Windows
- **Most scalable** installer for Windows



InstallAware
for Windows Installer

Windows Installer without Rocket Science

Grow Software Margins: Save on Bandwidth



Grow Software Margins

Install**Aware** reduces the size of a setup by **up to 90%** using the best compression available – **64 bit LZMA, LZMA2, and BCJ2**.

Install**Aware** can even re-compress files and packages that have already been compressed using other compression formats.

Only Install**Aware** builds setups with advanced **better-than-Microsoft** compression, often **halving already-compressed package sizes!**



Grow Software Margins

Install**Aware** makes it easy to download technology runtimes or optional application features **only when needed/selected**.

Install**Aware** does not produce empty web based installers that force an Internet connection even to copy vital application files.

Only Install**Aware** lets the developer **choose exactly which files go online** in a setup.



InstallAware
for Windows Installer

Windows Installer without Rocket Science

Delight Developers: Convenience and Simplicity



Delight Developers

InstallShield's bundled runtimes can be very difficult to get working properly.

Common frameworks like Microsoft .NET and SQL Server deploy very simply using **InstallAware**.

Plus, **InstallAware** improves compression by as much as 90% - at no effort/cost to you.



Delight Developers

Install**Aware** provides one-click runtime installers for:

- Microsoft .NET Framework (with service packs)
- Microsoft SQL Server Express (custom instances)
- Microsoft Visual Basic VMs
- Microsoft Visual C++ Runtimes (with secure updates)
- Crystal Reports for Microsoft .NET Framework
- Microsoft Data Access Components (MDAC)
- Microsoft DirectX
- **Point-and-click to build your own runtimes with the Application Runtime Wizard**



Delight Developers

All one-click runtimes can, with **one click**:

- Add all nested dependencies to the setup project
- Add all necessary hardware/software requirements to the setup project

Only Install**Aware** automatically adds the proper system checks and nested runtime dependencies.



Delight Developers

You can easily add any merge module or other technology installers to your setup, plus

InstallAware lets you:

- Improve compression
- Run them silently
- Capture and display native progress
- Take actions based on return codes



InstallAware
for Windows Installer

Windows Installer without Rocket Science

Maximize Revenue: Grow Exposure and Monetize Software



Maximize Revenue: Grow Exposure

InstallAware helps you gain critical software **Business Intelligence** by making it much easier to:

- **Register users online** from directly within the setup dialogs
- **Survey users** when they uninstall your software
- **Track product usage** when customers check your website for updates



Maximize Revenue: Monetize Software

Only Install**Aware** lets you handle **Digital Rights Management** tasks such as:

- **Authenticating users** online before they can install the product (full sample project included)
- **Authenticating users** before they download and install **updates**
- **Defining application features on-the-fly**, based on results of live authentication



InstallAware
for Windows Installer

Windows Installer without Rocket Science

Agile Builds Simplified



Agile Builds Simplified

- Do you maintain separate installers for similar products or product editions?
- Do you use complex automation interfaces to emit setup projects?
- Wish you had an easier way to manage your releases?

Consolidate your projects with Install**Aware**.



Agile Builds Simplified

Only Install**Aware** lets you:

- **Conditionally exclude/include** files, registry keys, and other setup actions at build time
- Inject and **customize text at build time**
- Build multiple flavors and editions of your product from **a single setup project**
- Save yourself the complexity and overhead of managing multiple redundant setup projects



InstallAware
for Windows Installer

Windows Installer without Rocket Science

Grow Software Margins: Save on Research & Development



Grow Software Margins

- Custom action authoring is an inherently error prone process
- Developing custom action DLLs requires very advanced programming skills
- Unforeseen scheduling errors with custom actions can lead to unexpected, hard to reproduce setup errors



Grow Software Margins

MSIcode eliminates custom actions:

- Only available with **InstallAware**, MSIcode is a human readable, linear setup script
- No programming skills are required to develop MSIcode scripts
- All common setup tasks are available as drag-drop script commands in MSIcode
- **InstallAware** converts your MSIcode script to a Windows Installer MSI database automatically at build time
- Let **InstallAware** worry about generating an MSI package that gets the job done right



InstallAware
for Windows Installer

Windows Installer without Rocket Science

InstallAware X10

Product Highlights



What's New in Version X10?

- **Single-Click Install Template: No More Next's!**
- **IntelliScan: Visual and Script Editor Error Detection**
- **Code Preview: Setup Script Topology Viewer**
- **Windows Features Plug-In 2.0**
- **Multi-Part Download File Plug-In**
- **Setup Engine Download Handler Plug-Ins**
- **Azure DevOps Services Integration**



Windows Features Plug-In 2.0

Configure Windows Features and Server Roles:

- Easily make your selections from a user interface that mimics the **“Turn Windows features on or off”** applet
- Windows Features Plug-In 2.0 **accurately reflects features and dependencies** found in every single OS release
- **Precision-configure** all client and server operating systems, platforms, and versions **from a single command**
- **The only** industry solution offering **fully up to date** and **accurate feature and role mappings!**



Setup Engine Download Handlers

A New Class of InstallAware Plug-Ins:

- Plug-Ins may now **register** themselves as **download handlers**
- The new **Use Download Engine** command switches between internal and plug-in download handlers at runtime
- Acquire **Web Media Block** data from any source, including **peer to peer networks!**



IDE Enhancements

The most advanced IDE just got better:

- **IntelliScan**: Functions like the **squiggly red lines** found in word processors, highlighting errors that would break your build before you start – both in the **script editor** and the **visual designers**
- **Code Preview**: Displays your **setup script topology** and allows instant access to any part of your scripts with a single click



Single-Click Setup Template

Modeled after the MSIX Installer user interface:

- **One-click to install software.**
- **One-click to uninstall software.**
- **Fully customizable user interface.**
- **Fully customizable installation logic.**

Copy-and-paste just a few lines of code **to upgrade** your existing installations to the new Single-Click installation experience!



Web Updates & InstallAware X10

- Build updates from an integrated view
- Choose from three web update modes: scheduled, manual, or fully automatic (always forcing only the latest version of your app to run/install)
- Deploy an update client that integrates with the Windows Task Scheduler, or works stand-alone from the Start Menu, or is invoked at every run of your setup for guaranteed updates
- Minimize updates to the system tray, or work interactively
- Fully customizable update user interface and logic – target updates by product version, language, and other business logic
- Serve patches, full blown new version installers, or other types of applications as updates
- Use the new automatic web updates to easily build third party product bundles with your application



Web Update Costs

InstallAware Web Updates do not cost extra.

- Web Updates are included with every product version, from Express to Studio Admin editions
- InstallShield has removed the Update Service Starter edition, requiring their users to pay for web updates



Upgrading to InstallAware X10

Now is the best time to Upgrade to X10:

- New built-in **InstallShield, Wise import** for one-click conversion of InstallShield projects saved as XML files and WiseScript files
- Call “**Set Variable NATIVE_ENGINE to TRUE**” to enable the new *InstantInstall* Native Engine Acceleration in any setup
- Set the variable back to **FALSE** to use the **Windows Installer Engine**



What Else Can InstallAware Do?

- Run SQL Scripts on Microsoft, Oracle, or MySQL database servers
- Create new IIS websites, virtual folders, application pools
- Register assemblies, call .NET installer classes
- Install ODBC drivers and DSNs
- Install services, register file types, environment variables
- Share folders, set access control lists on a variety of system objects
- Call any custom DLL or EXE file
- Extend the IDE directly with custom plug-ins that participate in the build process



InstallAware
for Windows Installer

Windows Installer without Rocket Science

Available Editions and Pricing



Express vs. Developer Edition

- Express provides point-and-click simplicity
- Express does not include MSICODE scripting capabilities, one-click MSIX/APPX/App-V builds, or fully automated Virtual Machine Testing
- Developer provides full scripting capabilities with advanced project samples and one-click MSIX/APPX/App-V build targets
- Express uses the same project format with other Install**Aware** editions for instant migration



Developer vs. Studio Edition

- Developer offers MSIcode scripting, with easy-to-learn drag-drop authoring
- Developer lets you fully customize the setup logic and actions
- Studio includes a dialog designer for your setup wizards, an MSIcode debugger, and Build Events
- Studio offers Compiler Variables, letting you build multiple setup releases from a single source project without complex automation



Studio vs. Studio Admin Edition

- Studio Admin allows you to import and customize MSI and MSM databases
- Studio Admin lets you perform setup capture on existing installations
- Studio Admin lets you create MST transforms from MSI databases
- The automation interface allows you to emit complete setup projects programmatically, from web or traditional applications, outside of the IDE



Pricing

	Full Version	Competitive Upgrade	Upgrade
Express	499	329	249
Developer	999	659	499
Studio	1,999	1,319	999
Studio Admin	3,999	2,639	1,999



Licensing Options

- One license is required for each developer using the IDE
- Floating licenses are available for non-simultaneous usage by more than one developer (+50%)
- No additional licenses are required for build machines with the purchase of a Studio or Studio Admin edition



Competitive Upgrades

- Users of any version of InstallShield and Wise products are eligible
- Competitive upgrades qualify you for an instant 34% discount
- Just provide your competitive product serial number to qualify



Upgrades and Maintenance Packs

- Minor version upgrades are free for life
- Major version upgrades are free within 3 months of your original order date
- Upgrades may be ordered any time at 50% of new product cost
- Maintenance packs are available for 1 or 2 year terms, at 40% and 70% surcharges respectively