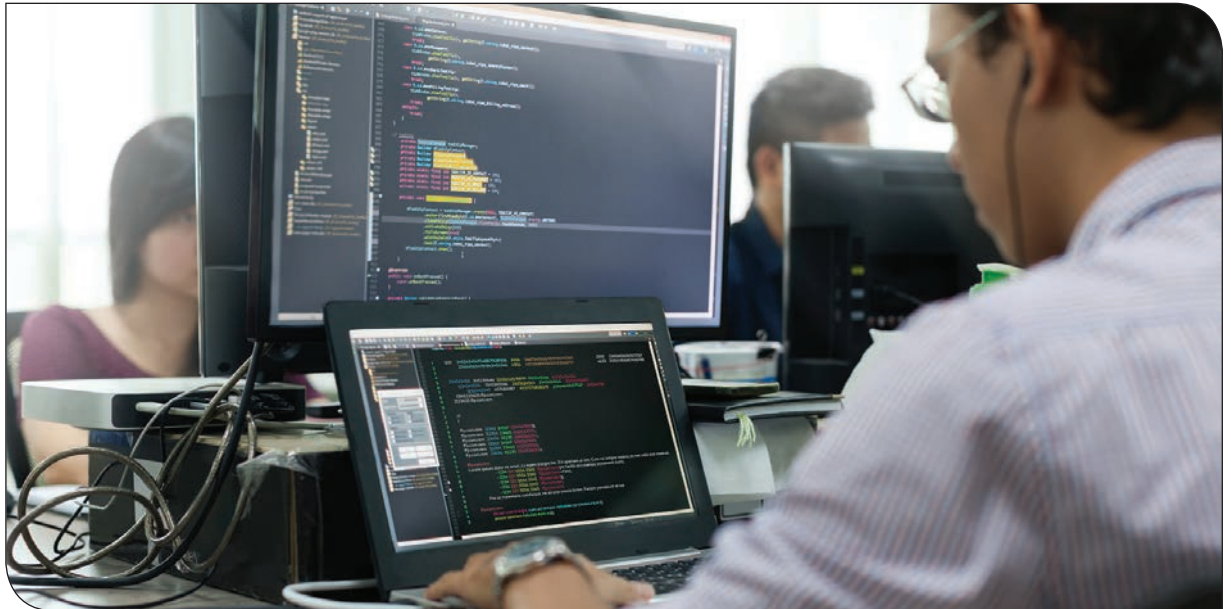




infotel

# DB/IO

SQL Code Quality Assurance | Improved Db2® Performance



## Quality Assurance Software for Db2® Applications

Your mainframe helped put the first man on the moon in 1969 and it is still an integral part of Government and commercial computing. Today, mainframes hold 80 percent of the world's business data and handle 90 percent of the world's credit card transactions. Government and The Fortune 500's reliance on the mainframe make it a critical component to global commerce day in and day out; to the world of doing business as usual, the mainframe never sleeps.

But sometimes the mainframe slows down. A resource-utilization hogging application on Db2 can create a domino effect for dependent applications in a batch window reducing response time and, in some cases, leading to ABENDs. In many cases, the application is taken out of production for maintenance causing delays in business workflows and unforeseen increases in MSU consumption – translation: lost revenue opportunity.

For optimal business productivity while maintaining budget, you must be sure your developers are all adhering to enterprise coding standards set forth within your DevOps directives. Infotel ensures a better application quality assurance process with DB/IQ. DB/IQ is an easy-to-use software solution designed to guarantee the highest level of application quality in your Db2 environment, so your business keeps moving at the speed of your mainframe while keeping your budget in the black.

The DB/IQ application suite consists of seven distinct software products<sup>1</sup> to help ensure your Db2 application quality assurance:

### **DB/IQ Quality Assurance for Db2 Applications (QA) – ensures coding standards are maintained for greater performance and availability for all Db2 and z/OS applications**

- Checks the quality of any SQL code according to organization-defined standards
- Detects reliability and performance problems, before they occur in production, saving time and money of DBAs, users, and clients
- Reveals problems early in the development phase, prevents poorly performing SQL from spreading

## DB/IQ Quality Assurance Plus for Db2 (QA+) – monitors, explains, and alerts upon all dynamic SQL in your Db2 for z/OS systems

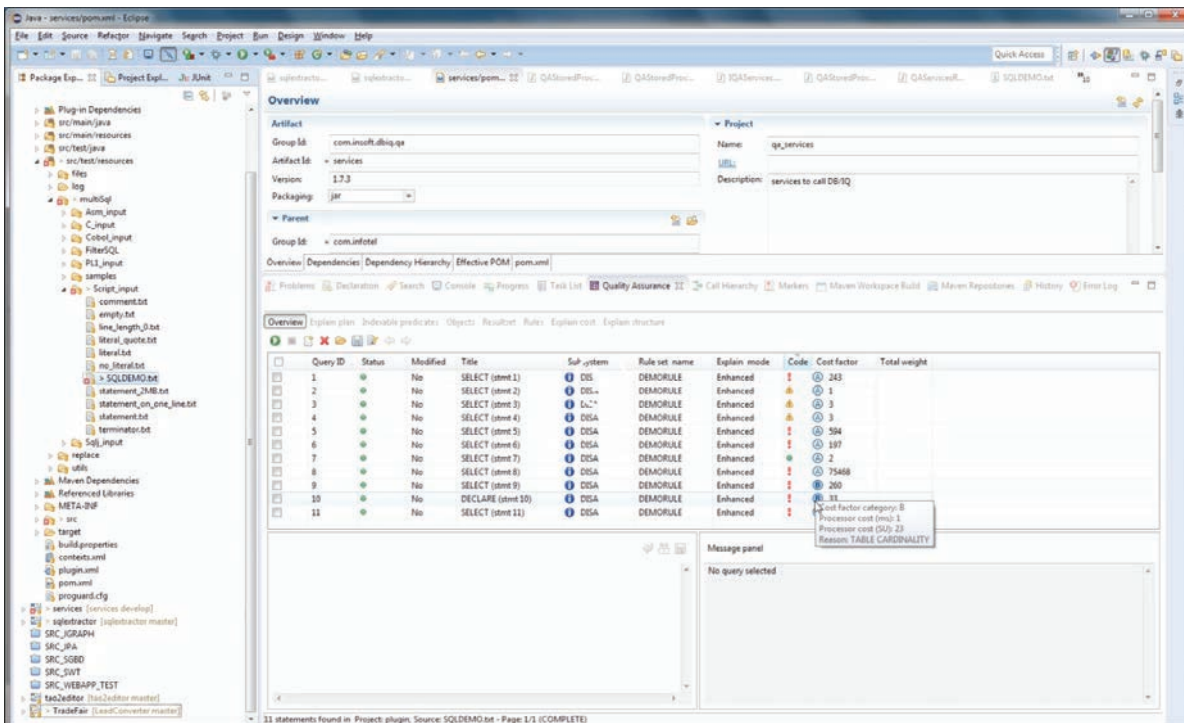
- Analyzes all dynamic SQL in accordance with your custom standards: home-grown applications, client/server, web-based, QMF, ERP applications
- Registers and alerts on all SQL code problems
- Avoids spreading of uncontrolled dynamic SQL and keeps track of “hot” SQL

## DB/IQ QE for Db2 Eclipse Plug-In (QE) – Eclipse plug-in is fully compatible with RDz and adapts enterprise-wide standards for all development made outside the mainframe

- Detects and fixes SQL problems during development
- Controls the quality of your application's SQL at source level from within Eclipse
- Increases developers' awareness by establishing programming rules and providing clear detailed explanation of Db2 access paths

## DB/IQ Workload Detector for Db2 (WL+) – reveals Db2 performance issues

- Detects top resource crunchers by analyzing entire applications and identifying heavy workload
- Captures trace for all SQL regardless of origin, both static and dynamic SQL, including QMF and ERP packages
- Extra “lite” Db2 trace to locate “n” resources at various levels ranging from THREAT, PACKAGE or accumulated PACKAGE summaries down to single SQL statements



Quality assurance in DB/IQ is as simple as adding a script file to the software queue for analysis of SQL statements. In just a few seconds the UI displays errors and corresponding cost factors for each statement in the queue.

## **DB/IQ Index Administrator (IA+) - Designs the best indexes to maximize overall Db2 application performance**

- Improves Db2 application performance
- Recommends the best index candidates based upon your current application SQL and system activity
- Examines all SQL associated with a single table, whether dynamic or stable, captures troublesome SQL together with real execution statistics

## **DB/IQ Migration Aid for Db2 (MA) - Recreate DDL using the Db2 Catalog information**

- Objective and consistent migration of specified items
- Guarantees efficient migration of object specifications in accordance with your organization's standards
- Facilitates migration operations between Db2 sub-systems

## **DB/IQ Package Management for Db2 (PM) – solves the problems of LOADLIB, DBRM and Db2 package management and ensures system integrity**

- Cleans up the Db2 Catalog by discarding non-required packages, even in Change Management Systems
- Prompts DBA to easily build jobs and keep a clean and efficient Db2 Catalog
- Avoids all -805/-818 potential problems by determining inconsistency between DBRMs packages and load modules

## **An Investment in Your Mainframe Performance and Availability for a Better EUX**

An investment in DB/IQ is an investment in your business productivity and most importantly the end-user experience of your most important asset, your customers. Put your development team on the same page, whether in-house or external resource, with DB/IQ. See it for yourself in this demo - [www.infotelcorp.com/software](http://www.infotelcorp.com/software).

For more information on Infotel USA, please visit [www.infotelcorp.com](http://www.infotelcorp.com).



<sup>1</sup> DB/IQ (QA+), (IA+), (WL+), and Eclipse Plug-In all require the base product DB/IQ (QA). DB/IQ (MA) and (PM) products are standalone software. For more information on installation requirements for the DB/IQ suite, please contact your local representative.

**Infotel Corporation USA**  
8270 Woodland Center Blvd., Suite 108  
Tampa, FL 33614

[www.InfotelCorp.com](http://www.InfotelCorp.com) | [software@infotel.com](mailto:software@infotel.com) | +1 800-543-1982