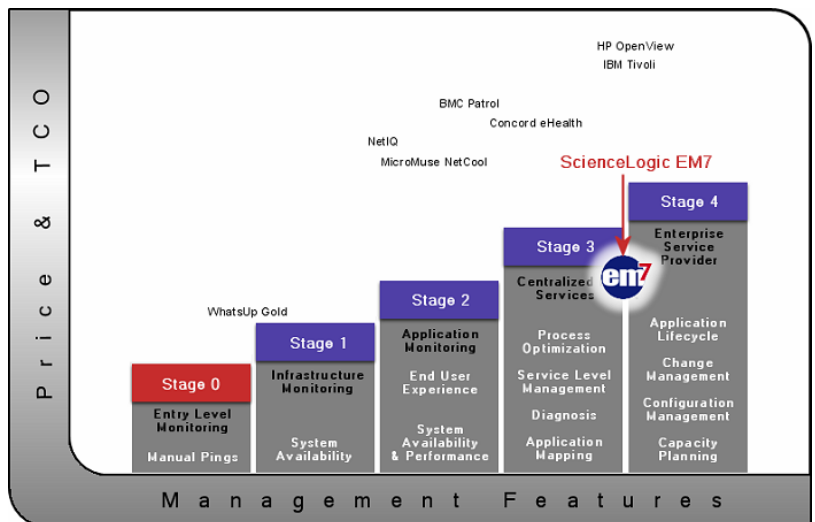


Simplify IT Management™

The Challenge

Today's IT organizations are faced with an ever increasing amount of technical complexity. Combined with the challenges of controlling costs, increasing service availability, and meeting compliance requirements, management needs a better way to centralize their IT efforts. Management must unify and streamline their processes, while increasing communications and reducing the complexity associated with managing staff and their infrastructure.

Enterprises of all sizes encounter similar IT management issues. They are overrun with ineffective and expensive software programs that offer little if any return of investment (ROI). Business processes are supported through a myriad of costly and disparate applications, resulting in no one authoritative source. Staff members that responsible for day-to-day operations inefficiently spend time searching through non-integrated applications only to provide answers that are probable, not definite.



The Solution

EM7 delivers one of the lowest total costs of ownership (TCO) and highest returns on investment (ROI) in the industry. EM7 is a business solution designed by IT managers to improve IT management through superior data consistency, operator efficiency, and compliance reporting. EM7 delivers one of the lowest cost-per-managed-node (CPMN) in the industry. On average, EM7 can manage more devices, interfaces, and applications than competing products, and at a fraction of the cost. EM7 provides much more long-term value and ROI than other products because it incorporates embedded applications that allow your IT management efforts to grow and expand.

Taking the complexity out of IT management, EM7 provides a truly revolutionary suite of embedded applications that were designed within ScienceLogic's pioneering Relational Infrastructure Management (RIM) architecture. Together, EM7 applications share a common data repository, which greatly simplifies management efforts and increases operator efficiency. EM7 helps reduce costs associated with existing framework products and disparate point solutions by consolidating functionality and reporting. Operating in conjunction with existing tools or as a stand-alone solution, EM7 provides centralized auditing and management via a secure web-based portal. Together these powerful features help maintain visibility and control of your enterprise while saving time and costs. The result: EM7 can significantly help reduce your overall IT management TCO, thus providing a strong competitive business advantage and significant ROI.

Implementation Costs

Many traditional framework products exist purely as a leader to professional services. Typically, weeks and months of slow and laborious implementation services will result. Your cost is hundreds of thousands of dollars, perhaps more, before other products provide any tangible functionality.

Fortunately, EM7 Management Systems were developed to take the complexity out of implementation and setup. EM7 Management Systems are server-based appliances with embedded software applications. EM7 is a complete solution. There are no additional software modules to buy. There are no additional hardware costs.

All EM7 Management Systems are pre-build and tested at ScienceLogic's configuration facility. And to ensure quality, each EM7 Management Systems goes through a 120 point check before being shipped to your location. Because of our dedication to excellence,

operational within a few days, and in many cases within a few hours. In fact, most EM7 service engagements take only a few days, and a majority of the time is spent training management and operators. EM7 provides total IT management functionality at a low implementation cost. The result is an IT management solution that can be quickly operational, saving both time and money.

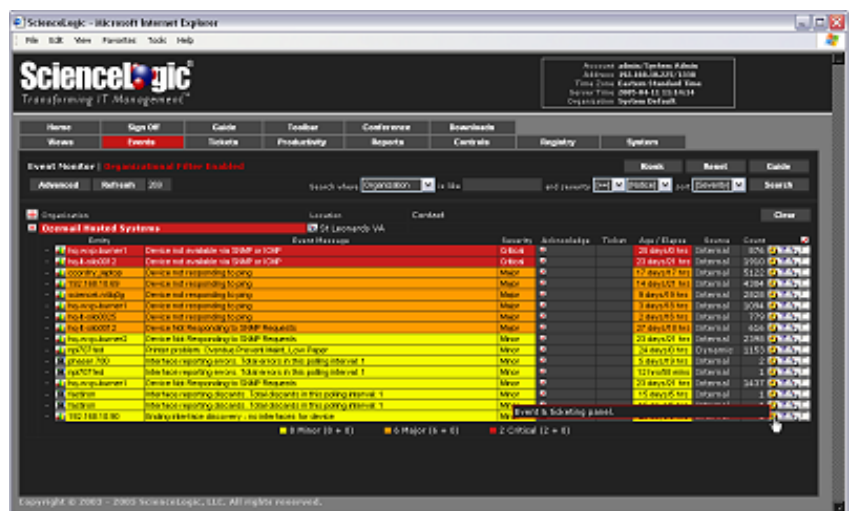
Key Benefits

- Improved Availability
- Continuous Improvement
- Compliance Auditing & Reporting
- Process Management
- Fault Prevention
- Reduce MTTR
- Incident Tracking
- Flexible for your needs
- Low Implementation Cost
- Fast Deployment Time
- Up & Running in Hours or Days
- Reduce Setup Staff Time

Integration

EM7's field-proven support of open standards makes the task of consolidating preexisting disparate tools and point solutions, a snap. EM7 accepts logs and messages from any system and can correlate resulting events to any managed entity.

While managing your enterprise, EM7 provides a flexible and dynamic reporting and auditing architecture that can be tailored to meet the needs of your business. This business process approach helps create a solution that is right for you. From a small IT organization with only a handful of devices to a global service provider with geographically diverse data centers, EM7 can centralize your IT management efforts, while reducing total cost of ownership and providing



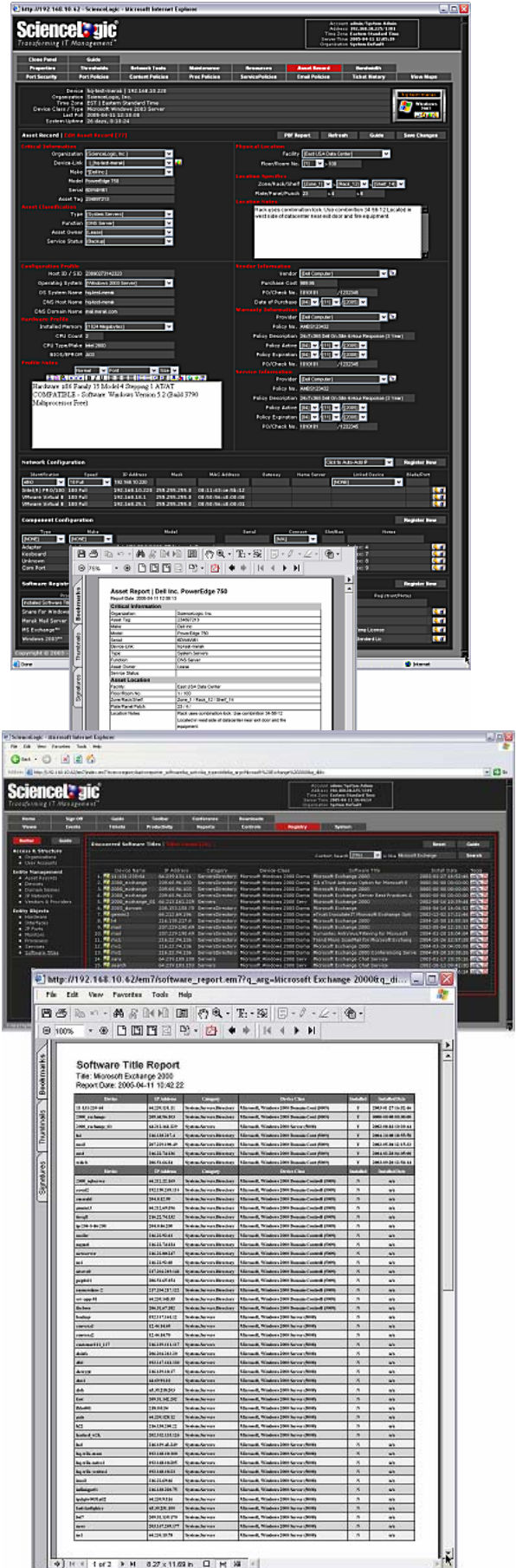
Compliance

According to Gartner, 40 percent (40%) of all mid-to-large size companies and organizations will be audited by the end of 2006; if organizations are found to be out of compliance fines could result. In today's business marketplace IT initiatives exist to support business objectives, thus making accurate budgeting decisions and legislation compliance (Sarbanes-Oxley Act) critical.

Fortunately, EM7 Management Systems provide a complete solution. Using ScienceLogic's own RIM architecture, EM7 empowers managers to provide complete reports about the status and usage of any software, hardware, vendor, user, and business entity or customer within your organization. EM7 helps control costs, manage inventory, and improve IT asset utilization across the entire enterprise.

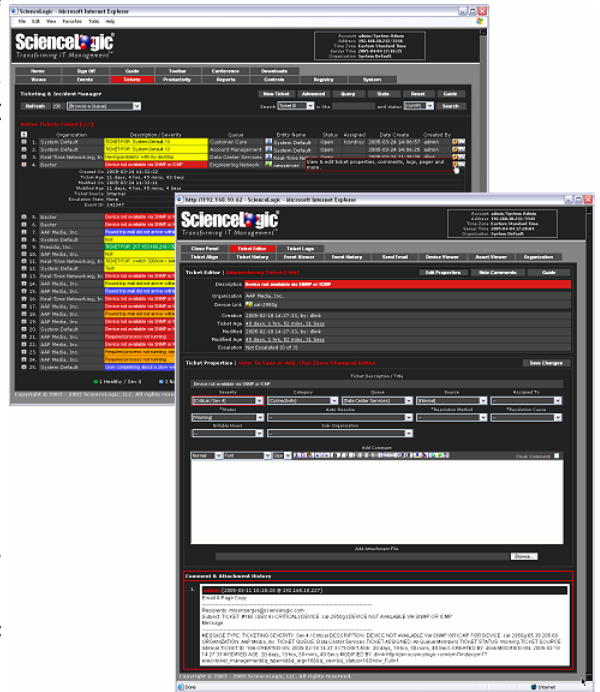
Delivering reports and metrics (to management, customers, partners, audit teams, shareholders, and regulatory agencies) is a necessity for compliance. However, manually gathering the necessary data and generating reports can drain hours of staff time from already overburdened IT organizations. With EM7, what was once a laborious and time-consuming task, becomes quick and easy. With one or two clicks of the mouse, EM7 automatically creates reports in seconds, from high-level status reports to highly detailed, granular trend reports. Simply put, EM7's suite of embedded applications helps ensure that business objectives are being met in an effective and efficient manner.

With EM7's embedded workflow and ticketing technology, EM7 helps provide evidence and an audit log of changes. EM7's service and process management allows managers to determine if software titles, services, applications, ports, etc.. are unnecessarily installed and/or operating on specific systems. Exception reports can be generated with a single click and advanced filtering allows you to find what you're looking for quickly. The result is improved reporting and auditing that can help reduce the risks associated with non-compliance regulations.



Improve Efficiency

Operator performance is just as critical as network and application performance. The ability for an IT department to respond and repair incidents can mean the difference between making your service levels or not. EM7 helps enterprises measure actions against their specific business strategies in order to ensure that objectives are aligned at all levels. A strategic business advantage, EM7 Ticketing & Incident Management can increase operator productivity and efficiency significantly, while saving your business both time and money. Operators and management alike, always have access to the information they need to resolve incidents, research details, and get issues resolved. With a single mouse-click, tickets can be created, historical data can be located, and much more. In fact, EM7 helps IT organization reduce the mean-time-to-repair (MTTR) through its exclusive architecture and conversation-speed navigation.



EM7's automated discovery saves time and helps ensure asset and status information is correctly captured. EM7 uses ScienceLogic's own patent-pending dynamic collection technology, which is designed to collect and correlate the information you want to know about your infrastructure. When changes are made within your enterprise, those changes are automatically captured by EM7. EM7 also provides enhanced automation with events, notifications, and tickets, which helps ensure that key staff members are notified of important events, if items remain dormant. With EM7, data never gets "lost" or forgotten. System wide record-retention policies ensure that data is kept for as long as your business requires.

Review

Today's organizations pay closer attention to the return on their technology investments and the impact of IT expenses on the bottom line. In response to the need to reduce the cost of typical IT management systems, ScienceLogic has pioneered Relational Infrastructure Management (RIM) and incorporated this new standard into the EM7 Management System line of products, which helps bring new levels of efficiency to IT infrastructure management.

ScienceLogic's EM7 appliance-based system provides tremendous advantages without the enormous capital and services expenditures associated with traditional framework deployments. Our ability to positively impact our customers' IT ROI has led to successful deployments at top IT departments, attracted by the EM7 system's rapid implementation, low cost of ownership and rich functionality. Recognizing the impact of workforce performance on the success or failure of IT systems, ScienceLogic's EM7 system is designed to create efficiencies in the end-user experience. You are never more than a mouse click away from the results that you are looking for.



ScienceLogic, LLC.
14121 Parke Long Ct.
Suite 111
Chantilly VA, 20151

ScienceLogic, EM7, All-In-One Management Appliance, Extensible Management Systems, E1500, E2500, E5500 and the ScienceLogic and EM7 logo are registered trademarks of ScienceLogic, LLC in the U.S. and other countries. All other brands or products are trademarks or registered trademarks of their respective holders and should be treated as such.