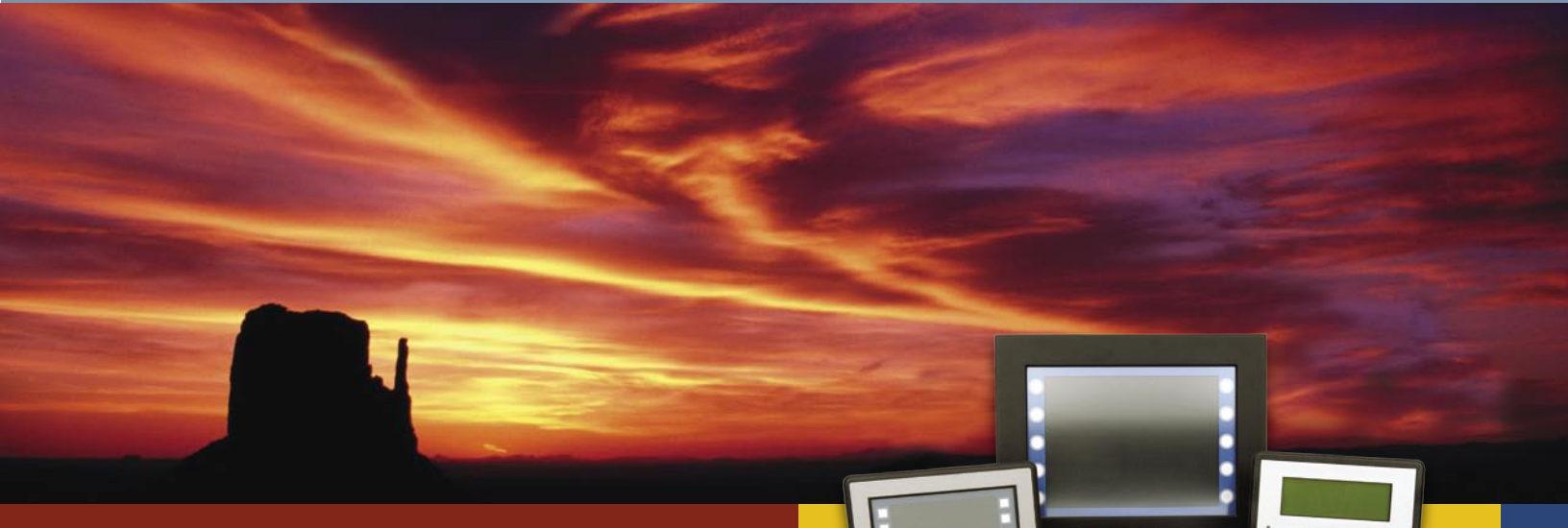


# QSI CORPORATION

*Manufacturer of Rugged Operator Interface Terminals*



**QSI**  
CORPORATION  
[www.qsicorp.com](http://www.qsicorp.com)

**QSI**  
EUROPE  
[www.qsieurope.com](http://www.qsieurope.com)

# Qlarity™ Terminals

## Ethernet-Enabled Graphic Terminals with Object-based Programming



QTERM-G75

QTERM-G70

QTERM-G55 Handheld & Panel-mount



Object-Based Programming

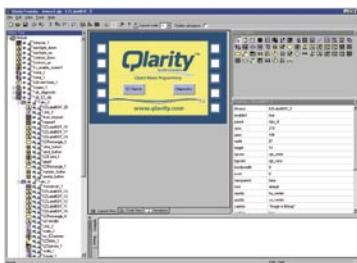
- Available in a handheld or panel-mount housing or as a module with display, CPU board, touch screen and mounting brackets for integration into your panel
- Object-based programming language (Qlarity™) makes application design easy. Use predefined objects, edit existing objects or create your own
- Programmable / intelligent. Stand alone operation or integrate with your intelligent host
- Speaker is programmable in both duration and pitch. Real-time clock is a standard feature or available as an option
- Display contrast is adjusted automatically for changing environmental conditions on units with STN color displays
- Windows® programming environment (Qlarity Foundry™) for screen design and integration is available at no additional charge
- Customizing the legend with your company logo and key layout makes the terminal a part of your product



	QTERM-G70	QTERM-G75	QTERM-G55
Display	320 x 240 color or grayscale	640 x 480 color	320 x 240 grayscale
Display Size	145 mm (5.7")	264 mm (10.4")	96 mm ( 3.8")
User Input	touch screen	touch screen	keypad
NEMA Rating	NEMA-4	NEMA-4	NEMA-12 / 4
Memory (Flash / RAM)	4 / 16	4 / 16	2 / 16
Serial Port(s)	EIA-232, -422, -485	EIA-232, -422, -485	EIA-232, -422, -485
Ethernet / Power-over-Ethernet	Yes / Yes	Yes / No	Yes / Yes

## QLARITY FOUNDRY

Qlarity Foundry™ is a PC-based software tool to assist in developing screens and applications for terminals based on the Qlarity™ language. This Windows® design environment allows you to use objects to create screens, design and simulate work spaces, compile and download applications to your terminal. Qlarity Foundry is simple enough for the elementary user yet powerful enough for the technical user. Although a code viewer and editor are included with Qlarity Foundry, robust applications can be developed by changing object properties rather than writing lines of code.



Qlarity Foundry.

## QLARITY™ LANGUAGE

Qlarity™ (pronounced "Clarity") is an object-based programming language designed by QSI Corporation ([www.qsicorp.com](http://www.qsicorp.com)) for a new line of intelligent graphic terminals. This scripted graphic terminal programming language uses objects to display information on the screen, accept user input and communicate with other devices. Other standard programming features such as conditional logic (IF-ELSE), looping (WHILE, FOR-NEXT) and a rich set of logical and arithmetic operators are also provided.

Simply use or modify stock objects or create your own objects to develop completely stand-alone and intelligent applications. Complex serial communications protocols can be supported without the need for a separate host.

For more information visit [www.qlarity.com](http://www.qlarity.com)

## QTERM-R55

### BASIC Programmable Terminal

- 20x4 lighted, supertwist LCD display, wide temperature or VFD displays are available as options (/H or /P)
- 24- or 40-key keypad with software-controlled indicator LEDs
- EIA-232, -422, -485 or 5-volt Buffered serial interface (1200-115200 baud)
- Simple, but powerful BASIC programming language allows you to add custom functions
- Handheld (/H) with optional battery back, large-character panel-mount (/L), or panel-mount (/P) configurations (shown from left to right below)
- 512 Kbytes nonvolatile flash memory; 256 Kbytes available for user program and data storage. Optional 1024 Kbytes flash
- CE Certified, NEMA-12/13 (/H, /P) NEMA-4 (/L)
- Optional Real-time clock, lighted keypad, auxiliary serial port and more
- Customizable logo and keypad legend



CE

## QTERM-IV<sup>†</sup> / QTERM-P40<sup>‡</sup>

### Multidrop Control Terminal

- 20x4 lighted<sup>‡</sup> supertwist display; large-character display<sup>‡</sup> easily readable from three meters
- 24- or 40-key keypad with up to five user-programmable indicator LEDs
- Full-duplex or block mode EIA-232, -422 or 5-volt Buffered; multidrop EIA-485 or -422m interface (1200-57600 baud)
- Programmable macros, local commands, auto execute strings and two-key rollover
- Handheld<sup>†</sup> or panel-mount configurations
- Tough impact-resistant ABS<sup>†</sup> or fiberglass-reinforced polyester<sup>‡</sup> enclosure
- CE Certified, NEMA-12/13<sup>†</sup>, NEMA-4<sup>‡</sup>
- Optional battery back<sup>†</sup>, lighted keypad, auxiliary serial port and E-stop switch
- Customizable logo and keypad legend



QTERM-IV



QTERM-P40

CE

## QTERM-N15<sup>†</sup> / QTERM-J10<sup>‡</sup>

### Low Cost Microterminal

- 20x4 supertwist LCD display. Lighted display and VFD available
- 12-<sup>†</sup>, 18-<sup>‡</sup>, 24-<sup>‡</sup> or 40-key<sup>‡</sup> keypad
- Full-duplex EIA-232, -422 or 5-volt Buffered interface (1200-19200 baud)
- Handheld<sup>‡</sup> or panel-mount configurations
- Tough, impact-resistant ABS case
- Low power: 28 mA @ 5 VDC; optional regulator allows 7.5 to 24 VDC
- CE Certified, NEMA-12/13
- Customizable logo<sup>‡</sup> and keypad legend



QTERM-N15

CE



QTERM-J10

## QTERM-II

### Rugged Industrial Terminal

- 20x4 supertwist LCD display. Wide-temperature, VFD and lighted displays available
- 24- or 40-key keypad with up to five user-programmable LEDs
- Full-duplex EIA-232, -422 or 5-volt Buffered interface (1200-57600 baud)
- Every key programmable with strings
- Handheld or panel-mount configurations
- Tough, impact-resistant ABS case
- CE Certified, NEMA-12/13
- Optional battery back, lighted keypad, auxiliary serial port and E-stop switch
- Customizable logo and keypad legend



CE

## CUSTOM TERMINALS

Engineered to meet the customer's specific needs, these terminals were designed and manufactured by QSI. Most of the terminals shown are derived from our standard terminals and may include new packaging, hardware features or software modifications.

For more information visit [custom.qsicorp.com](http://custom.qsicorp.com)



## WHY BUY QSI

QSI is a manufacturer of rugged graphic and character operator interface terminals for OEM, vehicle and industrial applications. We offer Ethernet and serial terminals (EIA-232, -422, -485, etc.) and industrial computers running various operating systems. QSI excels in making custom or semi-custom terminals that withstand high levels of shock, vibration, humidity and other environmental parameters. Our expertise in packaging and engineering allows us to easily customize a product to meet your needs.

Get a demonstration terminal today.

## TERMINAL SELECTION GUIDE

	QTERM-G70	QTERM-G75	QTERM-G55	QTERM-R55	QTERM-P40	QTERM-VI	QTERM-N15	QTERM-J10	QTERM-II
Character or Graphic Display	Graphic	Graphic	Graphic	Character	Character	Character	Character	Character	Character
Display Size	145 mm (5.7")	264 mm (10.4")	96 mm (3.8")	20x4, 20x4 LC	20x4 LC	20x4	20x4	20x4	20x4
Color, Grayscale or Monochrome	Grayscale, Color	Color	Grayscale	Mono	Mono	Mono	Mono	Mono	Mono
Handheld (HH) or Panel-mount (PM)	PM	PM	HH, PM	HH, PM	PM	HH, PM	PM	HH, PM	HH, PM
Programmable	Yes	Yes	Yes	Yes	No	No	No	No	No
Serial Communications	232, 422, 485	232, 422, 485	232, 422, 485	232, 422, 485, 5V	232, 422, 485, 5V	232, 422, 485, 5V	232, 422, 5V	232, 422, 5V	232, 422, 5V
Ethernet (10Base-T)	Optional	Optional	Optional	No	No	No	No	No	No
Power-over-Ethernet	Optional	No	Optional	No	No	No	No	No	No
Keys or Touch Screen	Touch Screen	Touch Screen	24 or 40 Keys	24 or 40 Keys	24 or 40 Keys	24 or 40 Keys	12 Keys	18, 24 or 40 Keys	24 or 40 Keys
NEMA Rating	NEMA-4	NEMA-4	NEMA-12, NEMA-4	NEMA-4, 12/13	NEMA-4	NEMA-12/13	NEMA-12/13	NEMA-12/13	NEMA-12/13
Other	STN, TFT, Enhanced TFT	Enhanced TFT	Programmable keys, Keypad LEDs	Programmable keys, Keypad LEDs	Programmable keys, Keypad LEDs	Programmable keys, Keypad LEDs			Programmable keys, Keypad LEDs

LC = Large-character Display 5V = 5-volt Buffered

QSI reserves the right to modify this brochure and/or the product(s) it describes without notice. In no event shall QSI be liable for incidental or consequential damages, or for the infringement of any patent rights or third party rights, due to the use of its products.