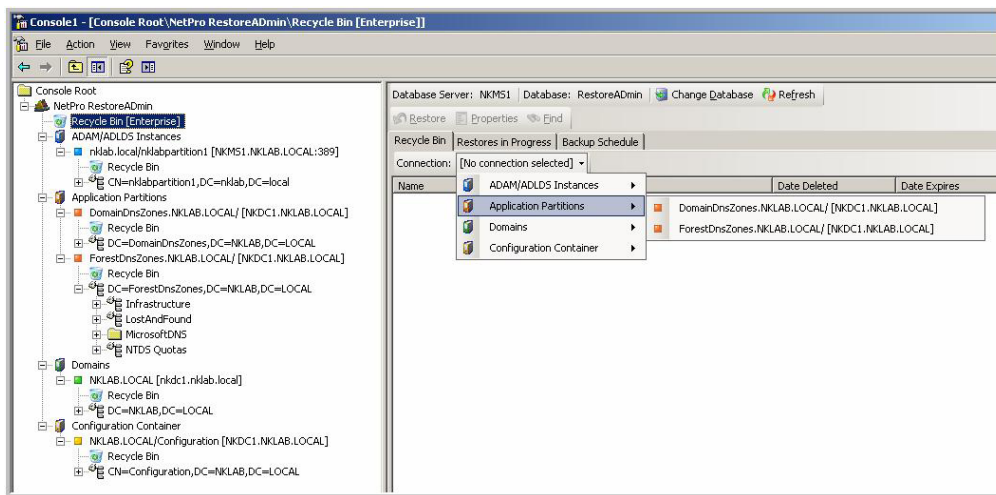


RestoreADmin

Online Active Directory backups, restores, and rollbacks



RestoreADmin provides complete backup and restore coverage for Active Directory, AD LDS, and application data partitions within your existing Microsoft Management Console (MMC) and Active Directory Users and Computers (ADUC) interface.

The Challenge:

In today's fast-paced business environment, changes to your network—whether accidental or malicious—are inevitable. Changes to Active Directory alone—the most widely distributed component of your Windows infrastructure—can cause widespread chaos for users, applications, and resources throughout your enterprise. Even a few minutes of downtime can mean millions in lost revenue. Your job? Get it all back online quickly and effectively...before affecting everything from employee productivity to overall network security. Yet still meet compliance requirements.

The Solution:

RestoreADmin snaps into native tools for complete and integrated backup and recovery functionality for Active Directory, AD LDS, application data partitions, domain, and configuration naming contexts. Quickly locate and restore deleted objects—or roll back existing objects—without ever taking users offline. Create and schedule centralized backups with in-depth analysis and reporting capabilities. Not only will you save time and money by eliminating time-consuming scripts and manual processes, you'll ensure organizational security by reducing the risk of costly network outages. Plus, you'll drive compliance to government and industry regulations. Not a bad solution.

Key Features:

- **NEW!** Get the same online backup and restore capabilities for Active Directory Lightweight Directory Service (AD LDS, formerly ADAM) and application data partitions—and DNS zones stored within them—as are available for Active Directory.
- **NEW!** Restore or roll back an attribute to a null (empty) value to return it to an undefined state.
- **NEW!** Snaps in to the Microsoft Management Console (MMC) for an integrated backup and recovery console for AD LDS, application data partitions, domain, and configuration naming contexts.
- **NEW!** Run an attribute comparison report between any backup and Active Directory to quickly spot incorrect changes before performing a rollback.
- Enables fast online restores and rollbacks of deleted objects, associated attributes, security descriptors, passwords and group memberships
- Enables incremental backups to a single instance database
- Snaps into Microsoft's Active Directory Users and Computers (ADUC) interface
- Lists all deleted objects forest-wide using recycle bin integration
- Recursively restores child objects and automatically recreates parent containers.
- Provides advanced searching, filtering, sorting, and grouping
- Enables replication to the local domain, remote domains or to specific sites
- Allows granular restores of specific attributes without affecting others
- Recreates deleted objects when restores are prohibited
- Offers flexible backup profiles with advanced scheduling
- Enables automatic database maintenance
- Generates detailed backup history and comparison reports



Key Benefits:

- Provides full coverage for Active Directory, quickly resolving inadvertent deletions or changes to help eliminate downtime.
- Cuts downtime and drives user productivity with online restores and scheduled backups.
- Slashes recovery costs and procedures by eliminating scripts and manual processes.
- Snaps into native Microsoft tools to leverage existing IT investments and removes the need to learn another third-party user interface.
- Allows you to quickly find and restore deleted objects through advanced search, sort and filter capabilities.
- Eliminates the requirement to take users offline to perform object level restores.
- Reduces network overhead and cost requirements with more efficient backups.
- Helps prove compliance with corporate and government regulations through detailed forensics and extensive reporting capabilities.

NetPro Computing, Inc.
4747 N. 22nd St., Suite 400
Phoenix, AZ 85016
800.998.5090
602.346.3600
sales@netpro.com

Perform Easy Online Restores and Rollbacks of Deleted Objects

RestoreADmin provides immediate online restorations of deleted objects and rollback of existing objects as well as their associated attributes without taking users offline. Get a detailed list of all deleted objects from a selected domain or configuration naming context—or across your entire forest—using an intuitive recycle bin interface. So you can quickly find, recover or roll back the objects in only a few clicks. And get users back online in minutes—not hours or days.

Create and Schedule Centralized Backups of Supported Objects

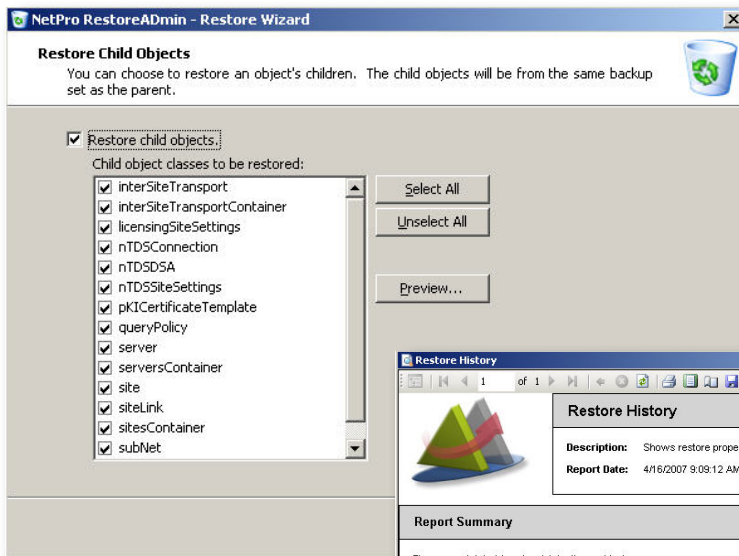
With the backup wizard in RestoreADmin, you can easily create automated, centralized backups of Active Directory domains or entire forests. With extensive customization options, you can optimize network usage by scheduling backups during off-peak hours and by performing delta backups of selected object classes at different intervals.

Generate Detailed Reports to Help Prove Compliance

Through tight integration with NetPro ChangeAuditor, RestoreADmin can help prove compliance by providing detailed forensics on each deleted object, including who deleted it, when, where and why. Generate backup history and comparison reports for advanced analysis and trending, and even preview future backups before they're carried out.

About NetPro

NetPro gives you unprecedented control over your Microsoft Windows infrastructure with software solutions built with decades of industry leadership. More than 6 million users—from such respected organizations as Coors Brewing, the U.S. Army, and General Motors—look to us for their security and compliance, identity and access, and infrastructure management needs.



RestoreADmin lets you recursively restore child objects from both the configuration and domain naming contexts, further accelerating recovery time and helping to ensure uninterrupted service for users.

With the extensive reporting capabilities in RestoreADmin, you can get detailed reports on the restore history of each deleted object, plus generate backup history and comparison reports for advanced analysis and trending.

