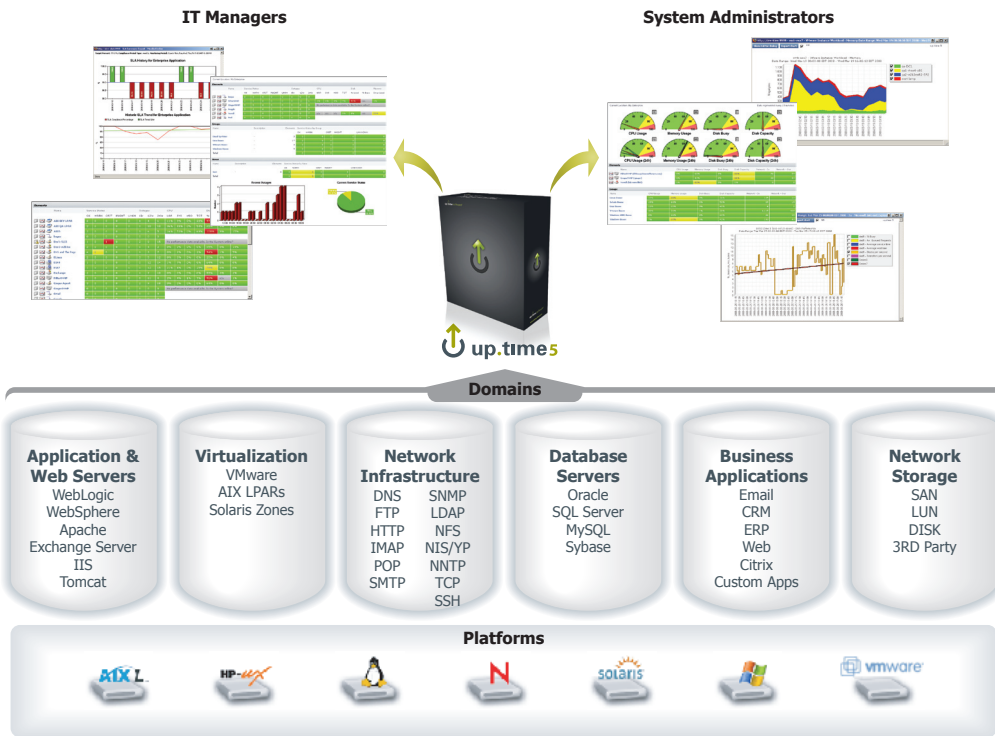


## up.time 4: IT Systems Management that Just Works



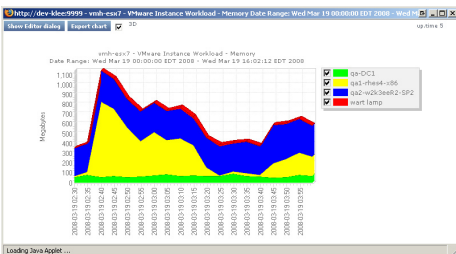
## IT Dashboards



View service status and outages from various perspectives:

- manage from a single pane of glass
- see application health
- upstream and downstream integration
- cross-infrastructure monitoring
- automated reporting
- enterprise-wide summary view
- user-defined applications
- enterprise-level resource scan
- exhaustive list of all monitored servers, services, and network devices

## Virtualization & VMware Monitoring



up.time reports on systems that are consolidated on virtual machines running on VMware ESX Server and AIX LPARs:

- Virtualization Report: easily pinpoint servers that are ripe for virtualizing
- VM density and capacity reporting
- analyze VM movement
- monitor VM workloads across VM farm
- VM reports include VMware Workload, V13 Workload Profile, and LPAR Workload

In addition to collecting performance metrics from the ESX Server, performance metrics are also reported for each instance:

- Workload - CPU
- Workload - Disk
- Workload - Memory
- Workload - Network
- Workload - % Ready
- Workload - % Used
- Instance Motion

## Server & Application Monitoring



up.time collects a wide variety of performance and system health metrics from various database management and application servers:

### Database Server Monitors

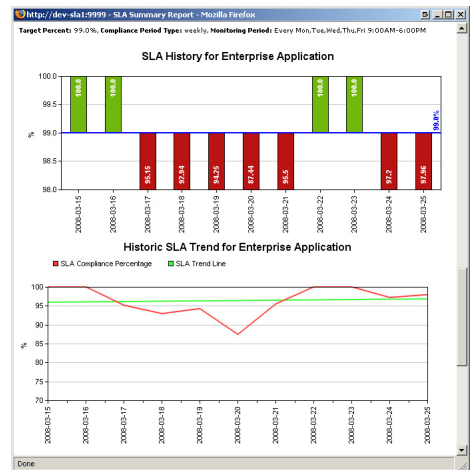
- Microsoft SQL Server
- MySQL
- Oracle Database
- Sybase ASE

### Application Server Monitors

- BEA WebLogic
- IIS
- Microsoft Exchange Server
- VMware ESX Server
- WebSphere

up.time also collects a variety of run-time metrics for BEA WebLogic and WebSphere applications including JVM, connection pool, EJB, and servlet statistics.

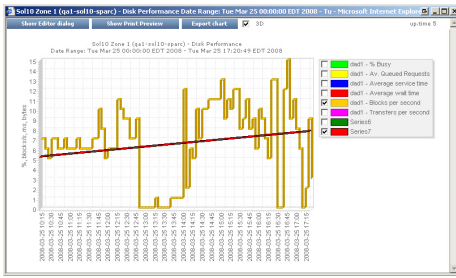
## SLA Management



Use service level agreements to define and meet customer needs.

- turn IT infrastructure demands into quantifiable goals
- measure the performance of key IT components from a variety of perspectives
- email delivery and Web application transaction monitors measure end-user experiences
- use trends to anticipate new infrastructure requirements
- generate SLA reports that show compliance success and objective breakdowns

## Capacity Planning



Use historical performance, availability, and trending reports, as well as performance graphs to manage your IT infrastructure through resource planning and consolidation:

### Capacity Planning and Trending Reports:

- CPU Run Queue Threshold
- Disk I/O
- Enterprise CPU Utilization
- File System Capacity Growth
- File System Service Time Summary
- Network Bandwidth
- Server Virtualization
- Solaris Mutex Exception

### Performance graphs include the following:

- CPU & Multi-CPU Usage
- Free Memory
- Cache Hit Rate
- Paging Statistics
- Page File Use

## Server Agent and VMware Platforms

### Linux:

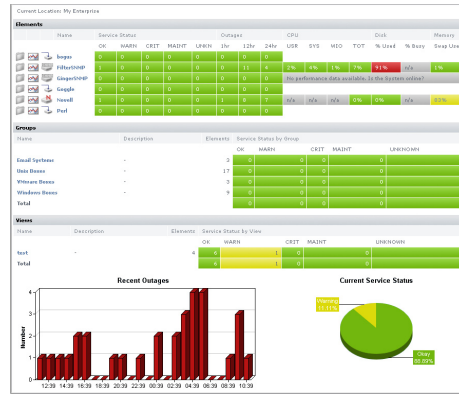
- CentOS 5.x
- Debian GNU/Linux 3.1, 4.x on glibc 2.3.x
- Fedora Core 1, 2, 3, 4, 5, 6, Fedora 7, 8
- RHEL 5 & RHEL Advanced Platform 5, 64-bit
- RHEL ES
- RHEL AS 4, 64-bit
- RHEL ES 3, 64-bit
- Red Hat Linux Professional 7.x, 8.x, 9.x
- SUSE Linux Enterprise Server & Desktop 10
- SUSE Linux Enterprise Server 9
- SUSE Linux Professional 8, 9
- Ubuntu Server Edition

### VMware:

up.time can monitor and report on the workload of instances running on a VMware ESX server. Supported versions include the following:

- ESX 3.x
- ESX 3i

## Browser-Based Management



up.time reporting and management is easily accessed through its browser-based interface.



Monitor your servers, applications, databases, and IT resources, and investigate alerts. Using the information that up.time gathers, you can solve problems *before* they impact your business.

## Monitoring Station Database

up.time can use the following databases as its DataStore:

- MySQL (included with up.time)
- Oracle 10g
- Microsoft SQL Server 2000, SQL Server 2005

## Monitoring Station Platforms

### Linux:

- Red Hat Enterprise Linux ES & AS 4
- SUSE Linux Enterprise Server 9

### UNIX:

- Solaris 8, 9, 10
- AIX 5.3

### Windows:

- Windows XP Professional
- Microsoft Server 2003 Standard & Enterprise

## Learn More About up.time

Visit [www.uptimesoftware.com](http://www.uptimesoftware.com) to learn more about how up.time helps you manage your IT infrastructure, and how others are benefiting from up.time:

- see up.time in action (product tour)
- white papers
- case studies

For more information, contact us by email at [sales@uptimesoftware.com](mailto:sales@uptimesoftware.com), or call us at +1-416-868-0152.

To download a free enterprise trial, visit [www.uptimesoftware.com](http://www.uptimesoftware.com) or click below:

