

Combined Density and Refractive Index Standards

COLUMBUS, Ohio (August 28, 2009) – METTLER TOLEDO proudly announces the world's first traceable, combined density and refractive index standards.

The four standard substances, certified for both density value and refractive index can be used to certify or verify density and refractive index instruments or combined measurement systems. Certification or verification is often required by quality management standards such as GMP (Good Manufacturing Practice) or ISO 17025.

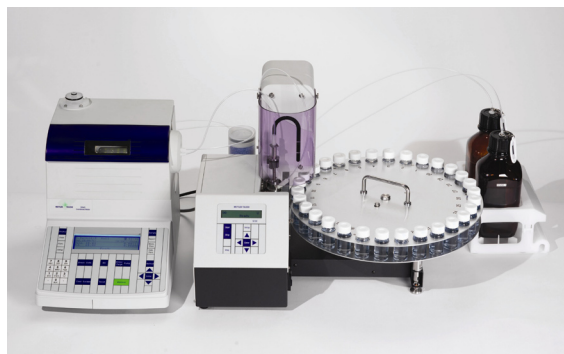


SC1 Sample Delivery and Cleaning Unit

The standards come in vials to be used directly on METTLER TOLEDO SC1 and SC30 automation units, thus minimizing manual handling and associated errors. This process covers the standard measuring range of both density and refractive index measurements, and is certified at three different temperatures to suit the different applicable needs of a wide range of industries.

A barcode containing all relevant required information accompanies each certificate. Users of METTLER TOLEDO LiQC systems simply scan the barcode and let the system perform the subsequent processes. The certificate information is stored within the system and results are compared to set values. Verification with a standard beyond its shelf life is prevented.

The new combined liquid standard reference materials from METTLER TOLEDO reduce uncertainty, eliminate time-consuming and error prone sample transfers and facilitate fully automatic performance verification. This provides a relief for busy lab managers who constantly feel the pressure to comply with ever increasing quality management requirements.



SC30 Sample Delivery and Cleaning Unit

METTLER TOLEDO is a leading global manufacturer of precision instruments. The Company is the world's largest manufacturer and marketer of weighing instruments for use in laboratory, industrial and food retailing applications. The Company also holds top-three market positions in several related analytical instruments markets and is a leading provider of automated chemistry systems used in drug and chemical compound discovery and development.

Additional information about METTLER TOLEDO can be found at www.mt.com.

METTLER TOLEDO

Shana Wheeler
Media Relations Manager
1900 Polaris Parkway
Columbus, OH 43240
(614) 438-4936
shana.wheeler@mt.com

METTLER TOLEDO

Wallace Harvey
Market Manager
1900 Polaris Parkway
Columbus, OH 43240
(614) 438-4505
wallace.harvey@mt.com

www.mt.com/analytical

Visit for more information