



Your business is more than getting aircraft from point A to point B. **Connect the dots with Guardian Mapping.**

GUARDIAN MAPPING **STANDARD, ENHANCED, PREMIUM AND MOBILE EDITIONS**

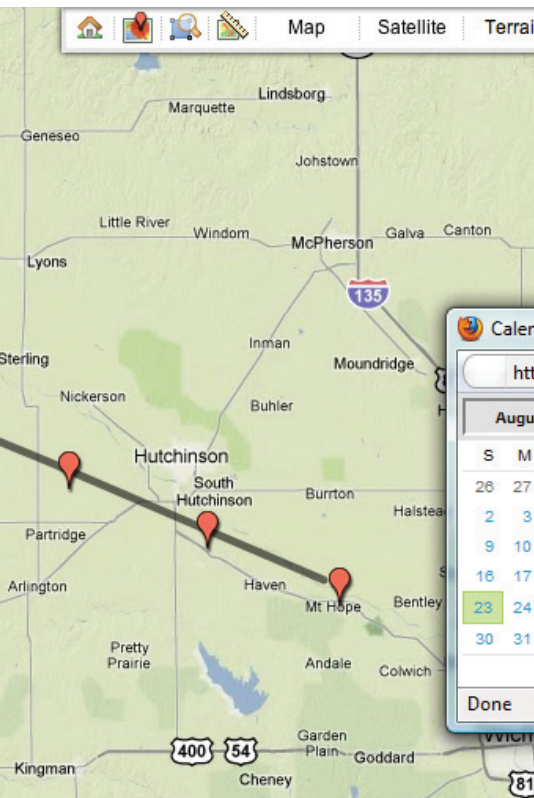


GUARDIAN MOBILITY

Where is my aircraft? It's a question that no operator can leave unanswered. If you don't know, you need to. Fast.

Guardian Mobility has been helping operators locate and track their aircraft for years. We became a market leader in GPS tracking devices and flight tracking services for aircraft because we make it simple to answer this critical question.

You need to know the location and status of your aircraft in a relevant and timely way – to protect your crew, to provide assurances to your customers, and to improve your bottom line, through improved scheduling and reporting. At Guardian, we provide the information you need in a way you can easily access and digest. **Don't fly blind.**

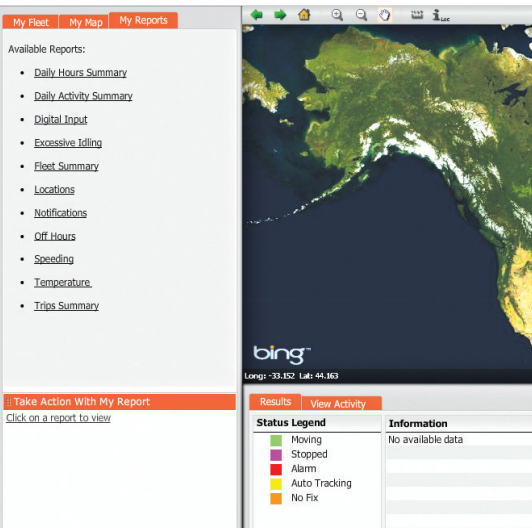
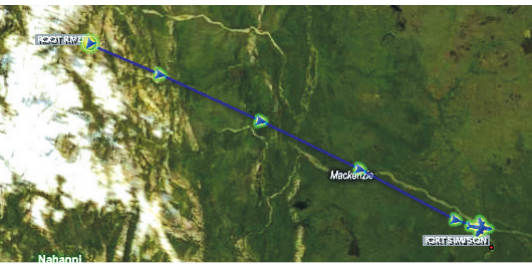
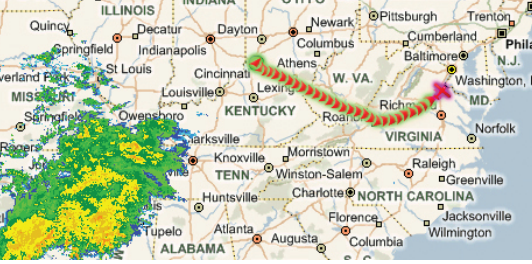


Guardian Mapping, Standard Edition

Perfect for smaller fleets, with multitasking ground crew, and for remote operations, where Internet bandwidth is at a premium.

Built using Google Earth mapping technology, Guardian's Standard Edition mapping is intuitive and powerful, and allows operators to see their aircraft in near real-time. It was designed to give operators the critical information they need, when they need it, with as few mouse clicks as possible.

- Choose from a typical map view, a satellite view, or a terrain view.
- Enhance operational efficiency and safety, by knowing current location and status of aircraft at all times.
- Track aircraft locations relative to a custom "point of interest."
- Improve transparency and accountability for customers. Show them exactly where you flew and when.
- Use a simple web interface to track multiple aircraft.
- Quickly enter a location to centre in the map, or use simple pan and zoom operations to navigate.
- Create simple geofences with ease, and set email alerts for when an aircraft flies in or out of a predefined area.



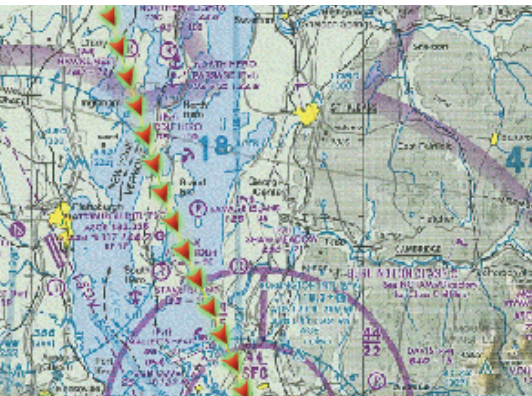
Guardian Mapping, Enhanced Edition

Perfect for larger operations, and those with custom map data and heavier reporting needs.

Built for Guardian by mapping experts, Guardian Mapping, Enhanced Edition, features rich data sets, including Microsoft Bing mapping data. It offers multiple map layers, including topography, current weather, and the ability to add custom data (locations, third-party and company specific maps).

- Map "trips" with takeoff and landing points automatically recognized.
- Use event based trip processing and select desired trip start and end tags.
- Generate useful reports, including total time and distance flown for any given period, and for any and all aircraft in a fleet.
- Save costs on scheduled maintenance, by better tracking and reporting of flying time.

- Create and edit custom landmarks, including air strips, landing pads and fuelling stations.
- View airport icons when zoomed in.
- Define event configurations including labels, severity and notification preferences.
- Set geofences to be alerted when an aircraft strays into or out of a set zone.
- See all standard map views, including hybrid map/satellite views, and a detailed topography layer with elevations.
- Additional map layers include current North American weather.
- Create custom map layers, from third party or proprietary maps (for companies with mapped assets, like pipelines).
- Export data into KML (Google Earth) format, to create a virtual fly-through of an existing flight.
- Securely rendered maps (256 bit encryption).



Guardian Mapping, Premium Edition

Perfect for larger operations with requirements for increased mapping detail.

Guardian Mapping, Premium Edition includes all the features of Enhanced Edition, plus:

- An aeronautical charts layer.
- Poly-line geofences, to create detailed flight paths and more exact no-fly zones. Again, be alerted when an aircraft strays from or enters a set area.
- Enhanced search tools: search by latitude-longitude, and by ICAO codes for airports.
- Aviation weather including TAFs and METARs worldwide.
- Breadcrumb support for devices that support multi-point payloads.

"Our high-profile clientele appreciate that we take their safety and security seriously... Whether we're flying remote film work or picking up a business executive at a remote lakefront property, it is a huge benefit to be able to say — and to show — where the aircraft is, at that instant."
Anna Rucchetto, CEO, Four Seasons Aviation



Guardian Mapping, Mobile Edition

Perfect for any operator with people that need to know where aircraft are, without being tethered to a computer.

Guardian Mapping, Mobile Edition is an innovative mobile phone and PDA-based tracking application that enables aircraft owners, operational people and ground crew to know where their aircraft are from anywhere they have cellular or WiFi connectivity.

Designed by Guardian Mobility to complement the other mapping options, Mobile Edition takes advantage of the latest features and benefits of the Blackberry smartphones, iPhone, iPod Touch and can also work effectively from virtually any WiFi or internet-capable smartphone.

- Access to location and status of aircraft, from virtually anywhere with cellular or WiFi coverage.
- When your customer asks about the status of their flight, have the answers, literally at your fingertips.
- Set your mind at rest about the safety of the crew.
- A simple interface gives you just the information you need, when you need it, on your mobile device. A perfect complement to Guardian's other mapping editions.



ABOUT GUARDIAN MOBILITY

Guardian Mobility is a leading provider of aircraft tracking devices and services, and offers global satellite coverage from Iridium and Globalstar, with pricing specifically geared to the needs of aircraft operators. Guardian's products are approved and widely used for Automatic Flight Following (AFF) by forestry contractors worldwide. All of Guardian's mapping services are designed to help customers track their fleets in near real-time, for enhanced safety, more efficient dispatch operations, and better reporting.

