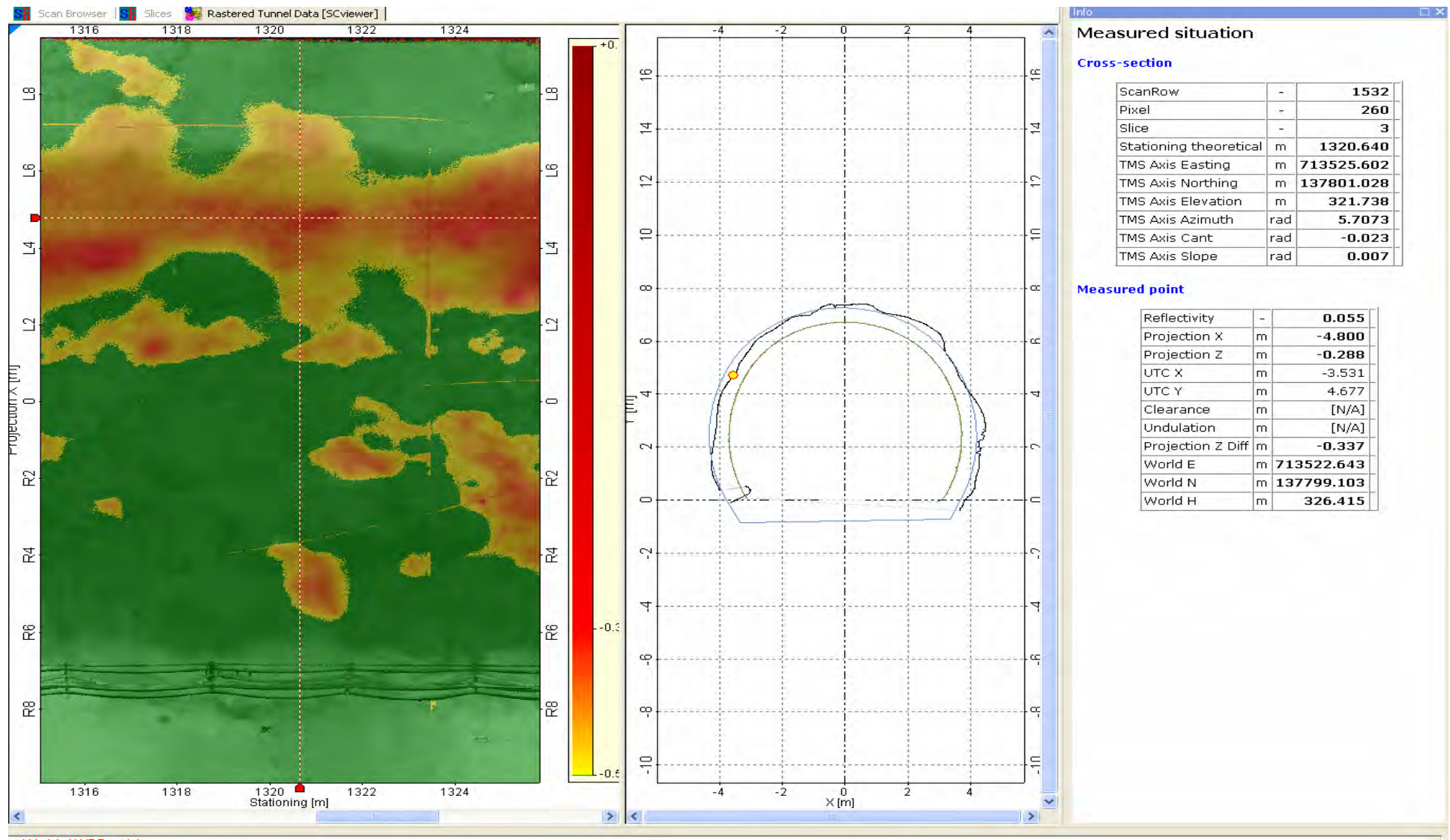


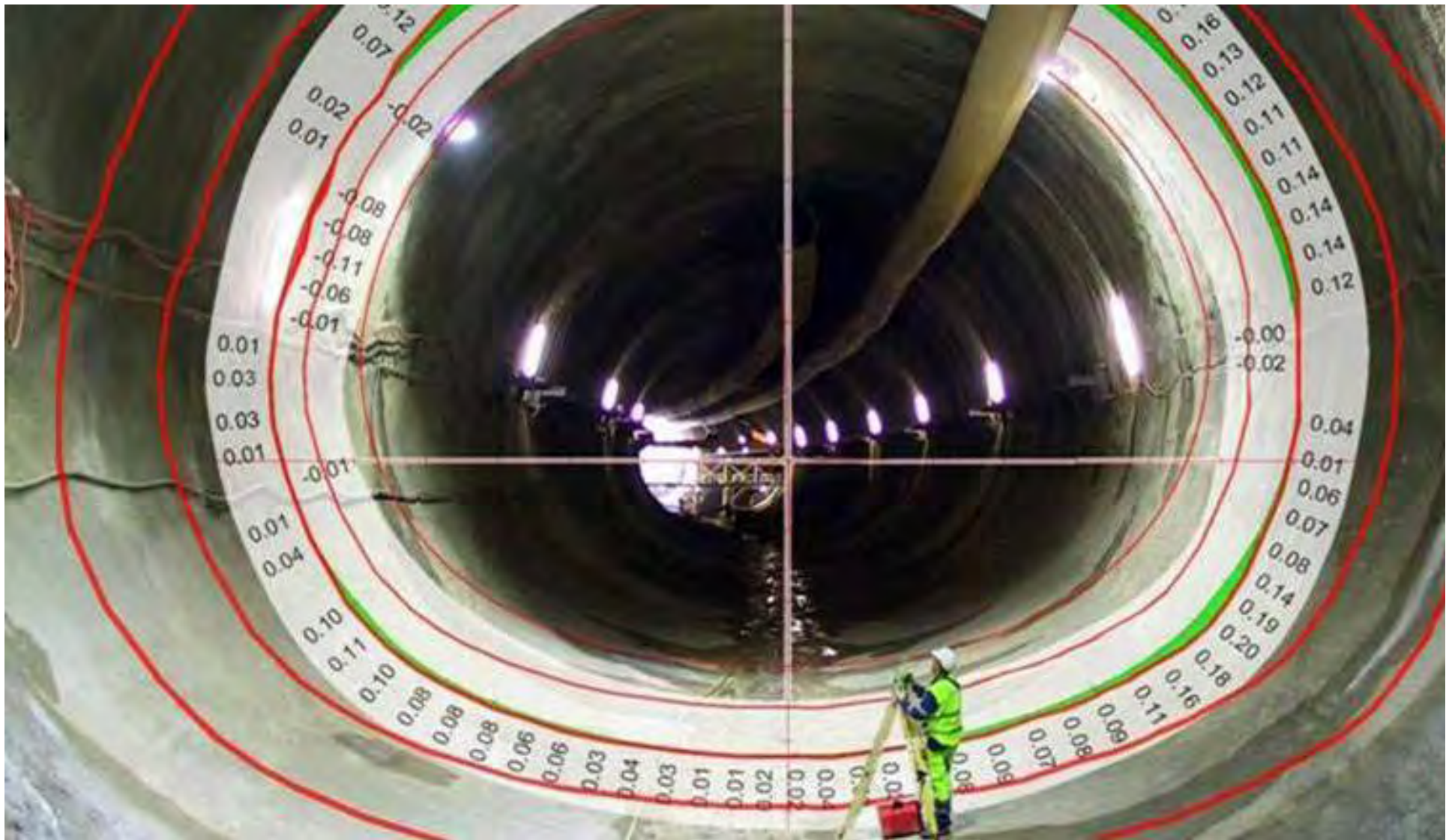
TMS Tunnelscan

Complete tunnel documentation & analysis



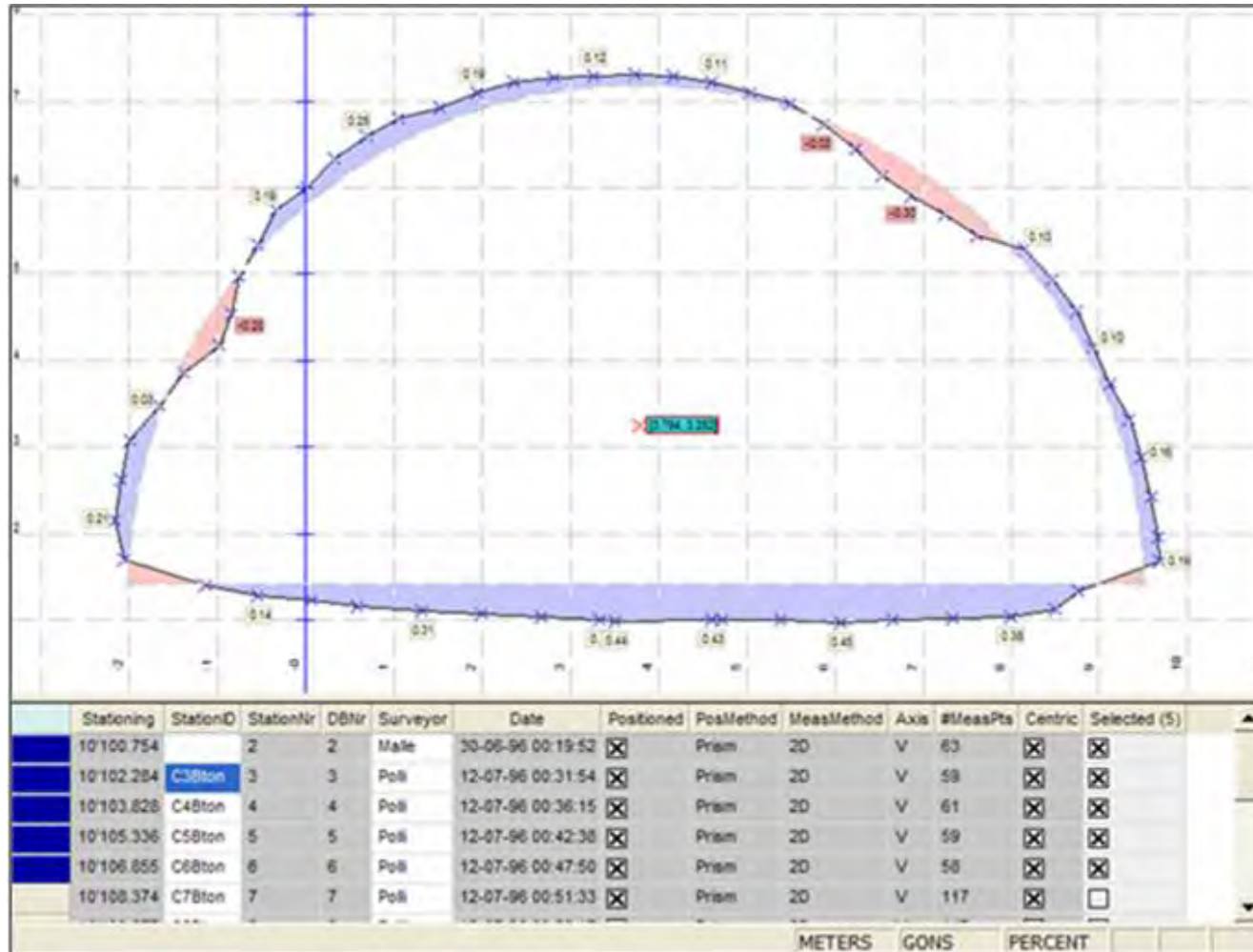
TMS Tunnelscan

Complete tunnel documentation & analysis



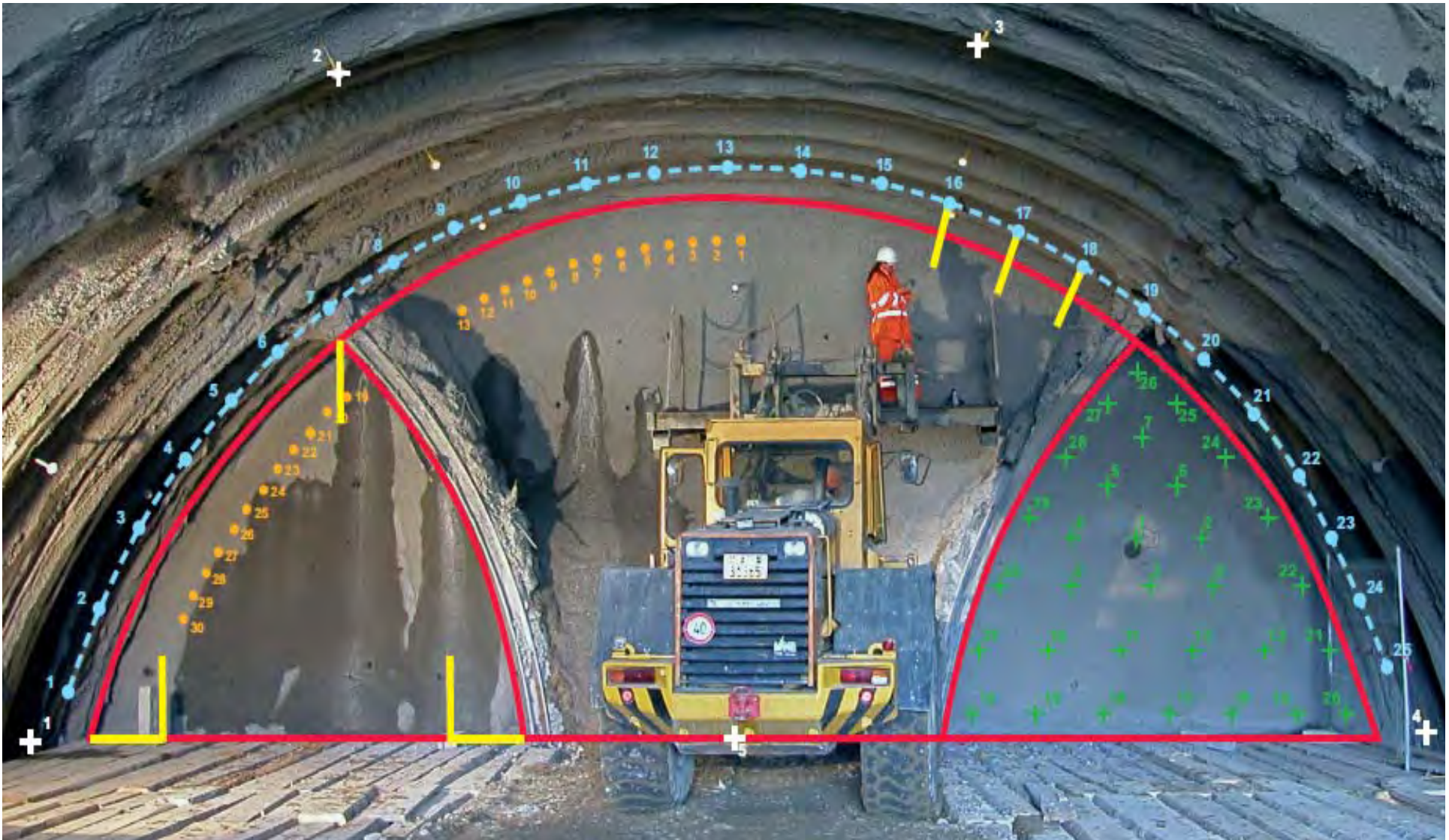
TMS Profile

Tunnel profile control & documentation



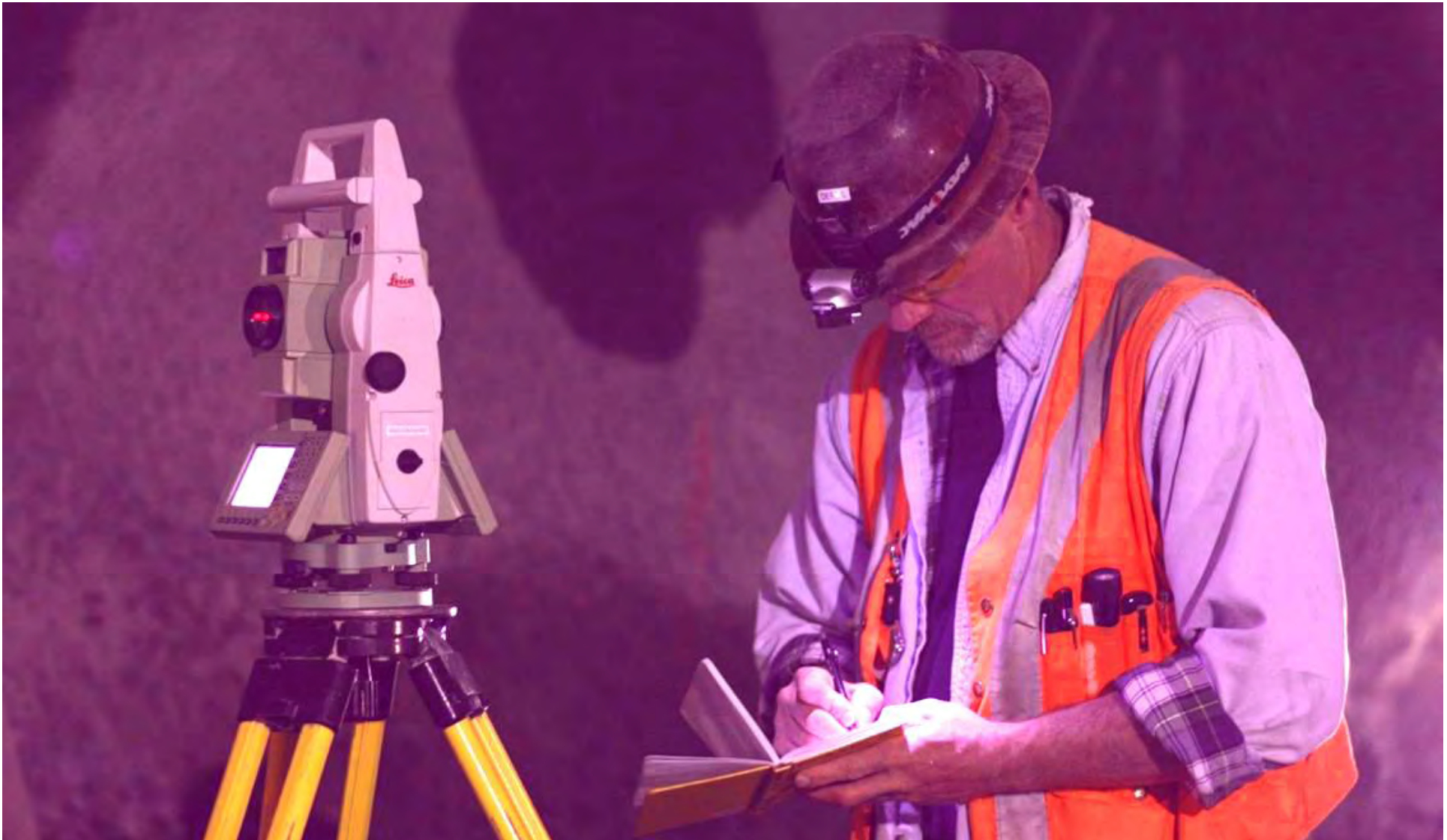
TMS Profile

Tunnel profile control & documentation



TMS SetOut

Automated tunnel construction surveying



TMS SetOut

Automated tunnel construction surveying



TSP

Advanced tunnel seismic prediction



TSP

Advanced tunnel seismic prediction



Amberg Rail

Complete rail surveying & documentation





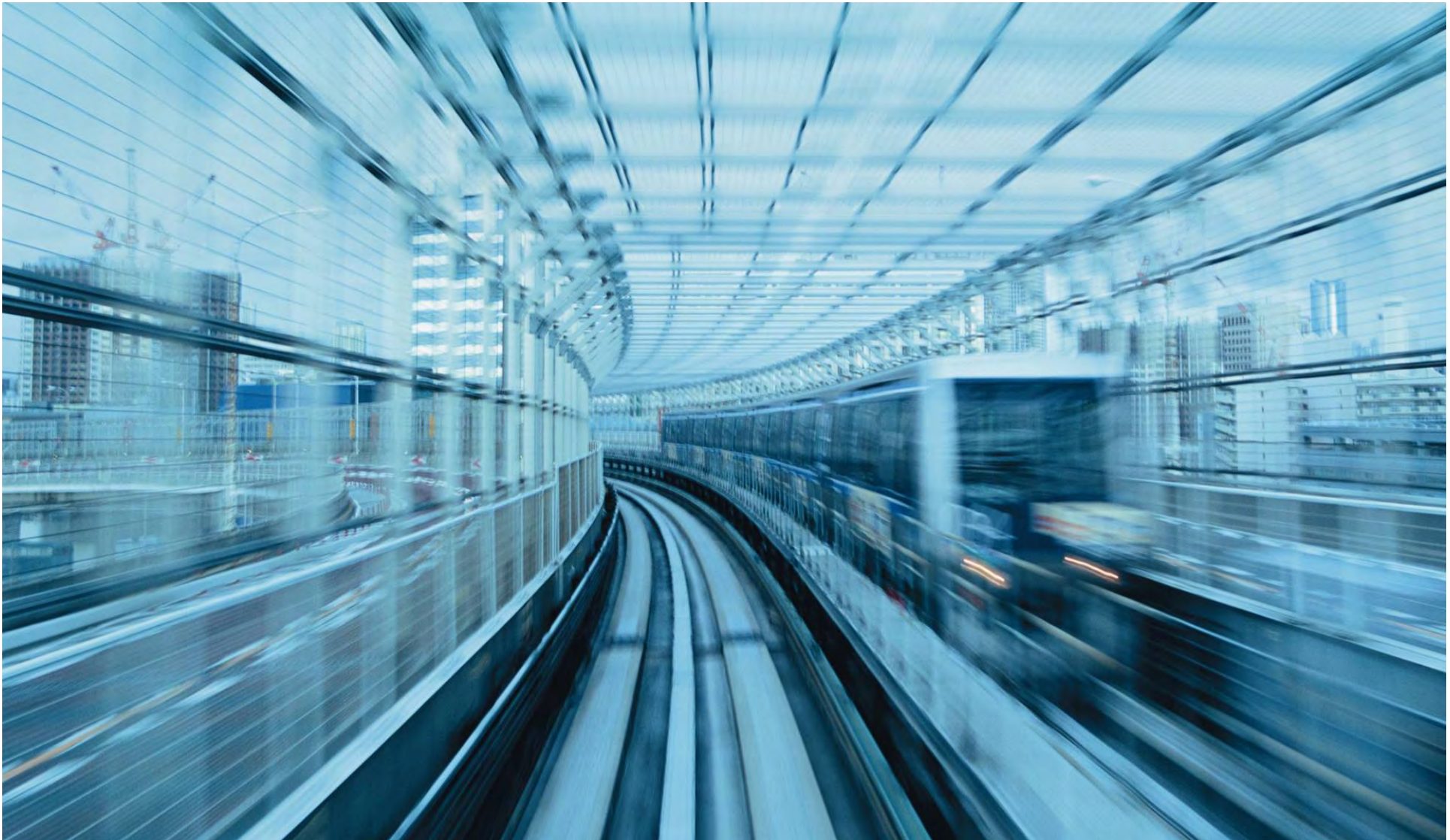
Walking speed:	1.45 m/s
Odometer:	123.4+12.538 m
Gauge:	1.4356 m
Superelevation:	25.3 mm
Disc space:	25.4 GB
Storage mode:	none
Scanner mode:	50Hz/10'000pix
Distance to TPS:	85.573 m
Lock:	Lock ON
Stationing:	123.4+34.538 m
Position dev:	- 2.3 mm ←
Height dev:	+ 4.3 mm ↑

	Measured	Design
Track easting:	625849.256 m	625849.436 m
Track northing:	247586.256 m	247586.286 m
Track height:	512.265 m	512.284 m
Gauge:	1.436 m	1.435 m
Superelevation:	25.3 mm	25.0 mm

Amberg Rail

Complete rail surveying & documentation





XRide

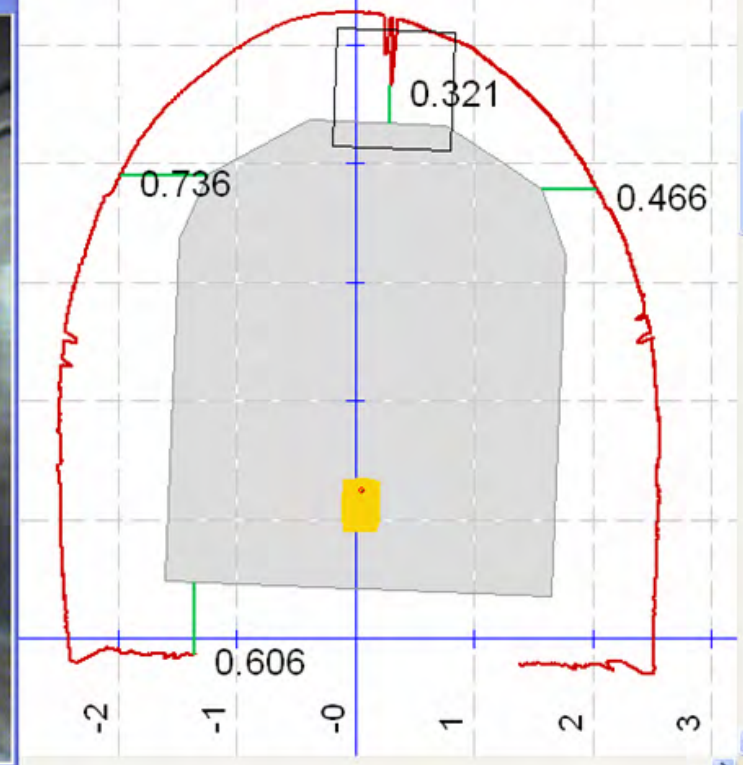
Vehicle integrated clearance and asset mapping



PK: 58799.73 m
Vit Dép.: 4.05 m/sec
Écart.: (- 1.435 m
Dév. Mes.: 60 mm

6

SCN
5120 px
100.00/sec
Disc Dur: 231.7 GB
Batterie: N/A



XRide

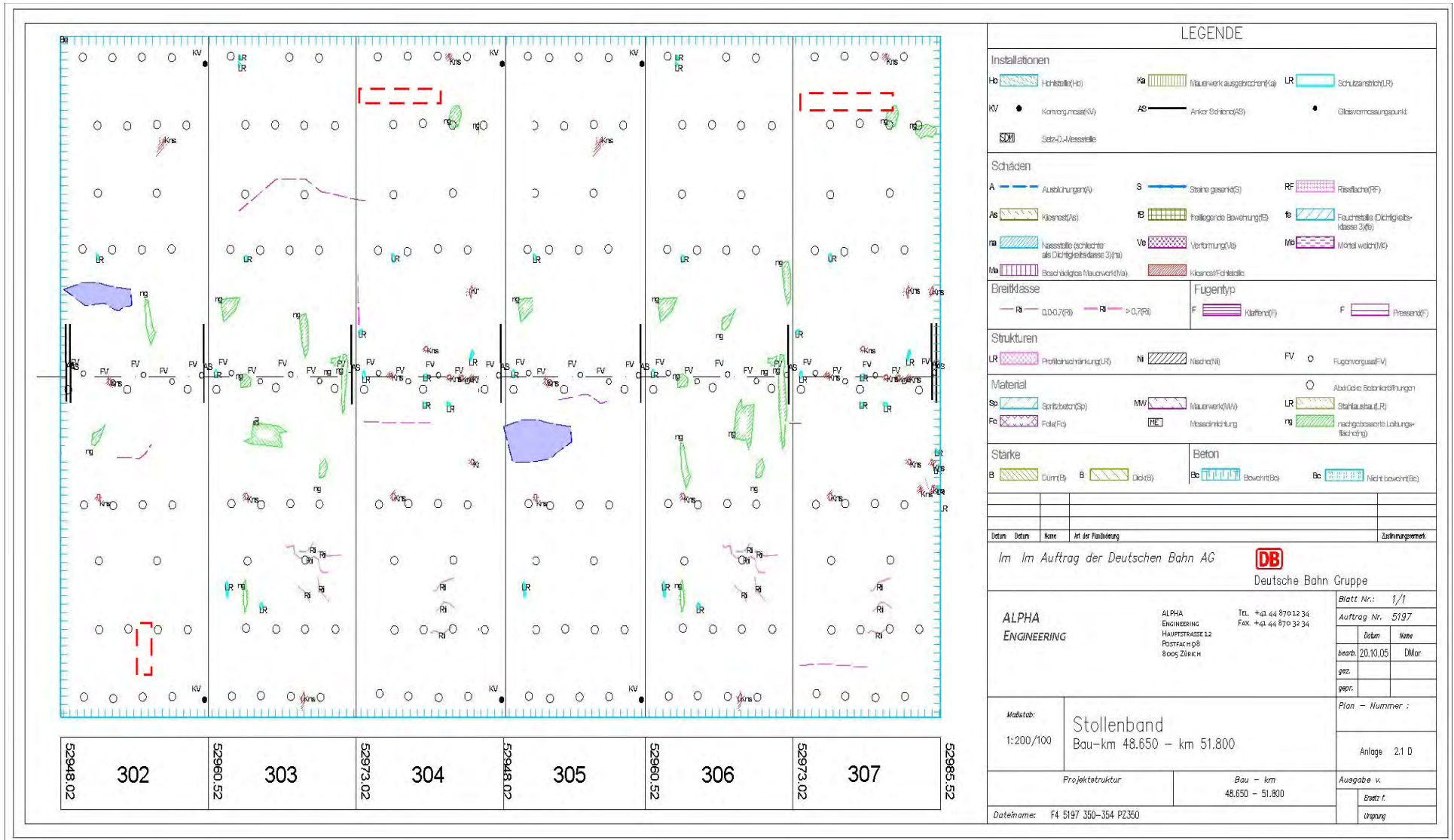
Vehicle integrated clearance and asset mapping





TunnelMap

Digital tunnel inspection software



TunnelMap

Digital tunnel inspection software



World Wide Acceptance

Serving rail & tunnel professionals across the globe

U.S. Corporate Contact

Brian S. Daniel
Sales & Distribution Manager
North America
+1 757.630.0094
bdaniel@ambergtechnologies.com

U.S. Distribution Partner

Kara Company, Inc.
5255 Dansher Road
Countryside, IL 60525
+1 800.369.5272
www.karaco.com

Amberg Technologies AG

Corporate Headquarters

Trockenloostrasse 29, P.O. Box 27
CH-8105 Regensdorf-Watt, Switzerland
Phone +41 44 870 92 22
info@ambergtechnologies.com
www.ambergtechnologies.com

Local Support and Service

Professional training & after-sales support

