

THE NEW 4850-PoE

A LITTLE GREEN CAN GO A LONG WAY



**EVERY mA COUNTS IN A PoE OR
AUTOMATIC DOOR SYSTEM
THIS STRIKE WAS BUILT WITH THAT IN MIND**

TRINE®	4850-PoE	.260 mA	12DC	3.12 W
H. E. S.®	9400/9500/9600	.450 mA	12DC	5.40 W *

What will you do with the extra power

- ✦ Reduce your power supply Size to save money.
- ✦ Reduce the number of installations that need a separate power supply for door hardware
- ✦ Add more devices to your system.
- ✦ Increase UPS up time due to lower current draw.



4 SIZES – 1 BOX
TWO SPACER PLATES PROVIDE
MAXIMUM FLEXIBILITY

Install Securely with our
Patented Anchor Pin System

Fits in Tight Installs
like Glass.

NO CUTTING OF THE FRAME

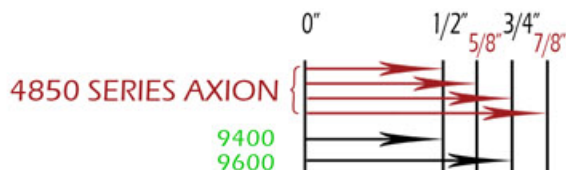
www.trineonline.com

* Information obtained from competitor website (Sept, 2011)

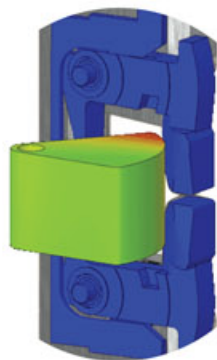
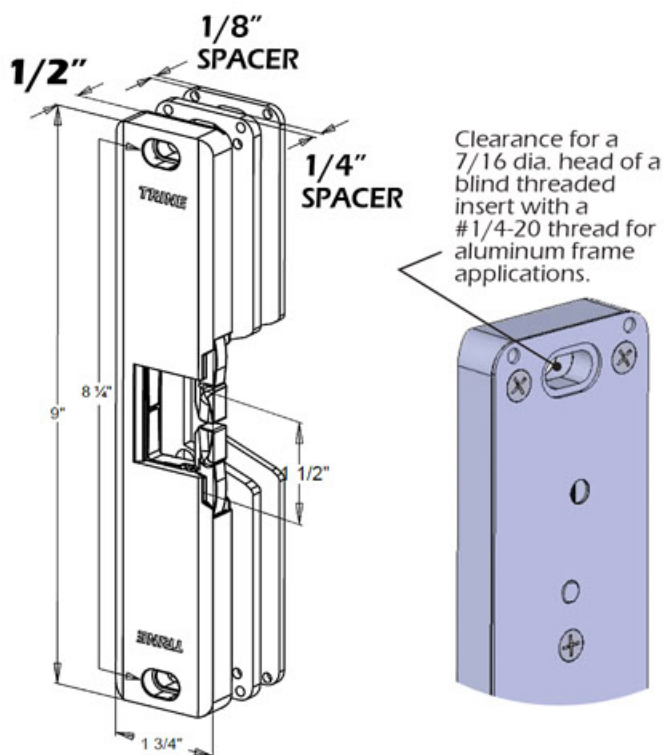


4850-PoE -- Power over Ethernet

TOTAL THICKNESS COMPARISON



The Axion 4850 provides 4 sizes right out of the box!

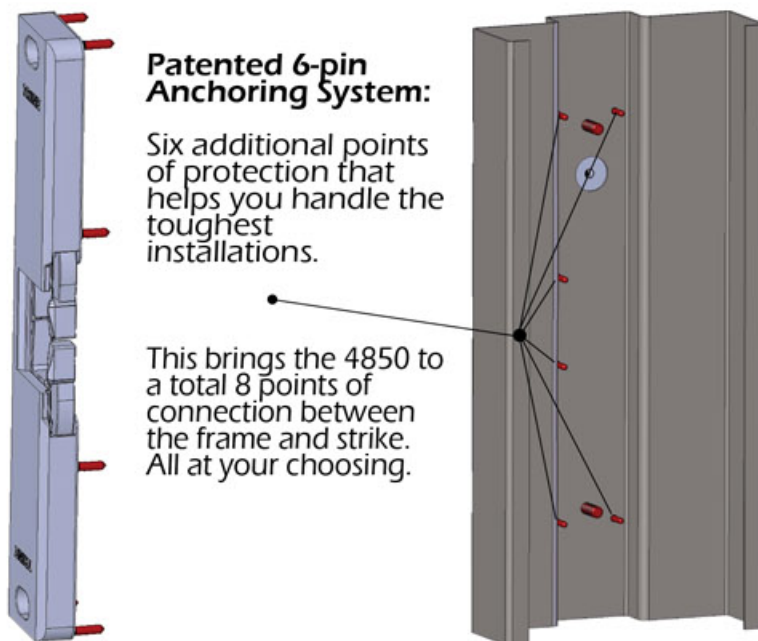


Patented One Piece Locking Mechanism

A simple and more durable model of strike providing the highest level of performance.

FEATURES:

- ✦ **ONLY .260 mA draw at 12DC**
- ✦ **NO CUTTING OF THE FRAME**
- ✦ **Allows up to a 1" latch throw for maximum flexibility.**
- ✦ **BHMA Grade 1 Electric Strike**



How to Order;

Finishes:

- 4850-POE-32D (Satin Stainless Steel – BHMA630)

The following finishes are:

- 4850-POE-US3 (Bright Brass – BHMA605)
- 4850-POE-US4 (Satin Brass – BHMA606)
- 4850-POE-US10 (Satin Bronze – BHMA612)
- 4850-POE-US10B (Dark Bronze – BHMA640)
- 4850-POE-32 (Polished Stainless Steel – BHMA629)