



GSW SSH Server Digital Certificate Authentication – Certificate To User Account Mapping

Feature: Many-to-one Digital Certificate Mapping

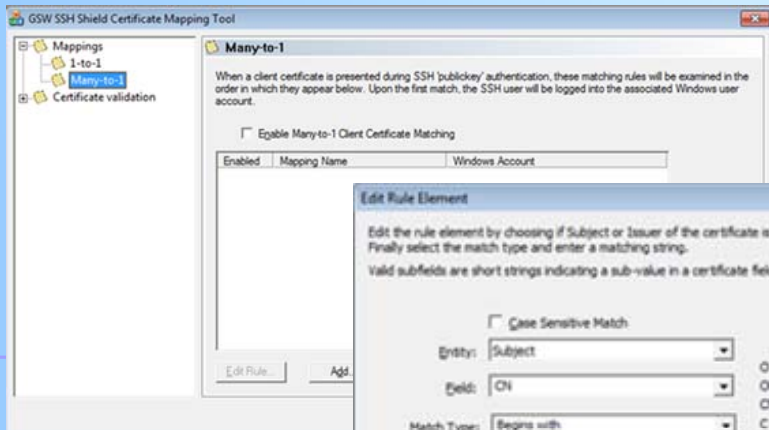


STRONG AUTHENTICATION

*Administrators
Easier*

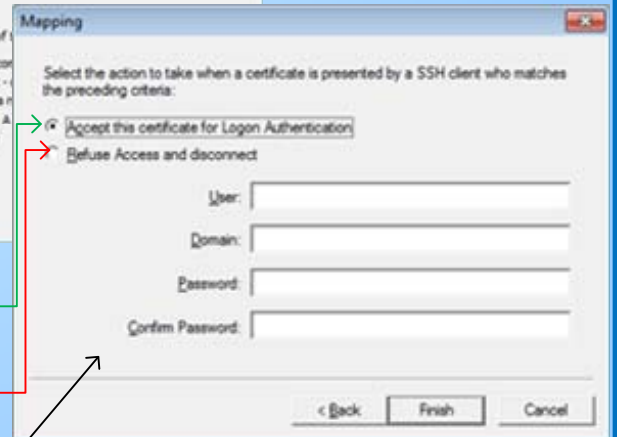
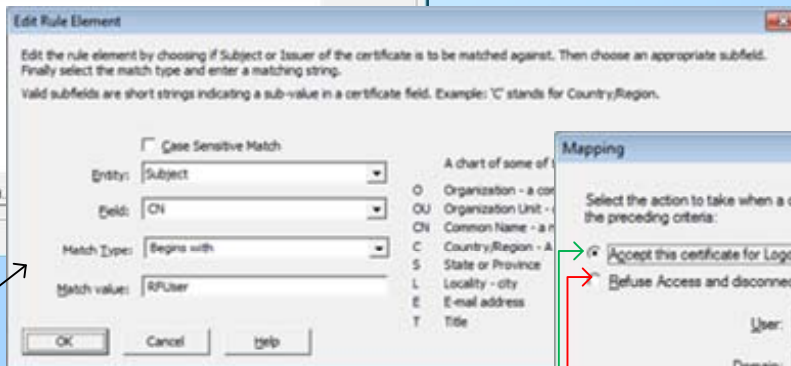
Configuration Administration Maintenance

- Useful for authenticating large number of users who require access to a resource
- Configure user accounts that grant different sets of rights and permissions
- Use separate many-to-one certificate mappings to map different groups to different user accounts.



Many-to-one mapping maps multiple client certificates to a single user account.

Wildcard Support



All certificates that meet defined criteria (matches the rules)

Grant Rights and Permissions for the Mapped User Account

Results in OR

Deny Access

For the User Account you define