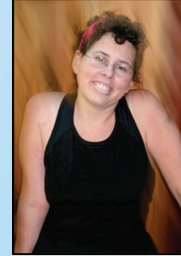


Become a Part of the Liddy Shriver Sarcoma Initiative!

The Faces of Sarcoma

More than 600 people have contributed to this [beautiful collection](#) of photographs that honors patients, survivors, and those who have lost their lives to sarcoma. [Send us a photo today](#). You can help by resizing your photo to 600 pixels wide (or less) and cropping it to focus on one person's face.



Sarcoma Support and Information

Volunteers from the Liddy Shriver Sarcoma Initiative are available to support patients, families, physicians and nurses by e-mail and telephone. We maintain a growing [Team Sarcoma Facebook Group](#), where patients, survivors and advocates can connect for meaningful discussion. The Initiative has published an extensive, portable [Guide for the Newly Diagnosed](#). There are separate versions for the [Kindle](#), [Nook](#) and [other e-Readers](#). In addition, the [Sarcoma Learning Center](#) contains hundreds of articles that can help patients and their loved-ones understand sarcoma

“Sarcoma Knows No Borders” Bracelets



Thousands of people around the world wear these bracelets as a sign of support and solidarity. The background color of the bracelet is a swirl of a pathology slide of a sarcoma patient. The bracelet is reversible. "Sarcoma Knows No Borders" is printed on one side, and the word "sarcoma" is printed in 13 languages on the other side. Each bracelet is individually packaged. Many boys, girls and teenagers wear them as ankle bracelets.

We suggest a [\\$5 donation](#) for each wristband, plus shipping costs. All of the donations for wristbands go directly to sarcoma research.

Additional Ways to Get Involved

We have worked with hundreds of families, advocacy groups and medical teams to promote sarcoma awareness, education and research. Whether you'd like to publish an online tribute to a loved one, plan an event in your community, or support promising sarcoma research, we would love to work with you! Physicians and advocates can help by writing and reviewing articles for ESUN, sharing our resources with patients, and providing feedback about our activities.

Contact Us

Contact us at support@sarcomahelp.org or by telephone in the U.S. at (914) 762-3251.

