

SIP-DECT Mobility Solution

For Microsoft® Lync™ Server 2010

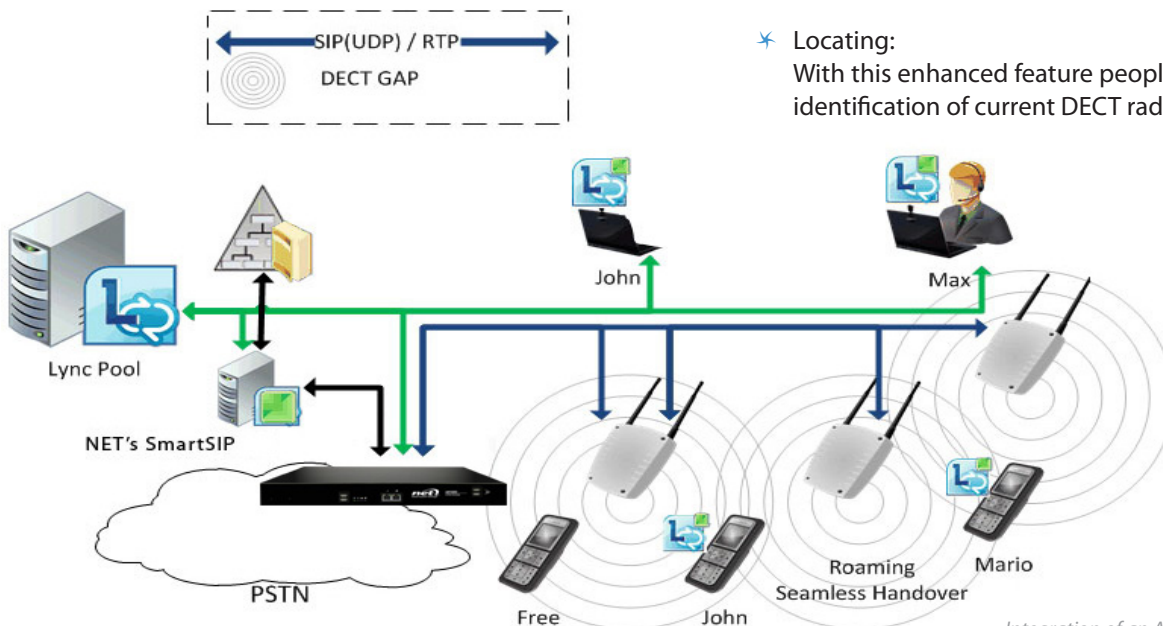
Microsoft® Lync™ Server 2010 delivers Unified Communications and enterprise voice capabilities through a single, easy-to-use interface that is consistent across PC, browser, and corded IP phones. With the integration of Aastra SIP-DECT and NET SmartSIP, the gap in voice communications for campus wide wireless mobility services is filled.

Aastra's SIP-DECT mobility solution in combination with NET's SmartSIP permit DECT handsets to be integrated into Microsoft Lync 2010.

The integration delivers one number / SIP address access for mobile users within the whole company environment covered with a fully synchronized cellular SIP-DECT infrastructure not only indoors but even in open areas.

Highlights of the SIP-DECT Solution

- ✦ **Presence:**
Users who are in an active call on their DECT handset are indicated as "busy" in the entire Lync infrastructure.
- ✦ **Encryption:**
All Aastra DECT handsets support DECT encryption to be safe from interception on the air interface.
- ✦ **Excellent Voice Quality:**
Even in environments with reflective surfaces, e.g. machine halls or high rise stores, dropouts are suppressed due to Aastra's extended audio quality feature DECT XQ™.
- ✦ **Central Phone Book:**
Access to a central phone book. Thanks to an LDAP (Lightweight Directory Access Protocol) connector, users can select one of up to three destinations per entry in central phone book to make outgoing calls easy.
- ✦ **Locating:**
With this enhanced feature people can be located through identification of current DECT radio cell whereabouts.



Integration of an Aastra SIP-DECT mobility solution in Microsoft Lync 2010 with NET's SmartSIP

Components from Aastra

In this cooperation Aastra delivers the cordless DECT phones of the **Aastra 600d family**. They offer various functions and excellent voice quality in addition to intuitive handling.



Aastra 610d



Aastra 620d



Aastra 630d

Furthermore Aastra offers the base stations (Radio Fixed Parts, RFPs) RFP L32 IP and RFP L34 IP, with which multicellular networks can be installed. RFP L32 IP and RFP L34 IP are IP base stations for DECT mobility solution which are connected as any other VoIP-SIP device directly to the LAN infrastructure.

Components from NET

Network Equipment Technologies (NET) provides Microsoft Lync Qualified Enhanced gateway for PSTN connectivity, Survivable Branch Appliance, Session Border Controller, and SmartSIP server. SmartSIP server is necessary to connect Microsoft Lync Server 2010 with DECT technology.

NET UX Series Products for Microsoft Lync Server 2010

NET's UX Series are a modular 1U platform that have been purpose-built for unified communications and enterprise session border controller applications. As a session mediation platform, UX Series products reduce both capital and operational expenses by eliminating the need to purchase separate infrastructure components such as a PSTN gateway, session border controller, and application server. The UX Series is qualified as a Survivable Branch Appliance (SBA), Enhanced Gateway (EGW) for Microsoft® Lync™ 2010 as well as certified as an Enterprise Session Border Controller for several leading SIP Trunking service providers. The UX Series has an optional Intel based server module for installing applications.

NET's SmartSIP application can be deployed on the UX or installed on a standalone Windows 2008 R2 server.

SmartSIP has to be licensed separately. Please contact NET_Sales@net.com.

SmartSIP



Network Equipment Technologies
6900 Paseo Padre Parkway
Fremont, California 94555
T 1 800 234 4638
F 1 510 574 4000
www.net.com

Aastra USA
2811 Internet Blvd.
Frisco, Texas 75034
T 1 800 468 3266
F 1 469 365 3006
www.aastrausa.com

