



A **Gladinet** White Paper

<http://www.gladinet.com>

Private Cloud for Your Enterprise

Installable Cloud Storage Solution for Security & Control

October 12

Contents

Introduction	2
Problem Statement	2
Previous Options	2
Gladinet Solution	3
Implementation	3
Summary	3

Introduction

This white paper describes Gladinet Cloud Enterprise which can be used by businesses to privately deploy and host Gladinet Cloud solutions, with all the public cloud features seen on www.gladinet.com, while retaining full control of data storage and the related access infrastructure.

Problem Statement

Public cloud storage solutions have become increasingly convenient as they enable anywhere access to files and folders for web browsers, desktops and mobile devices, with sync and share capabilities. And we have seen companies like Dropbox and Box leading the charge to popularize these public cloud access methods.

However, despite the convenience they provide, many enterprises (IBM, for instance) will not allow employees to use public services like Dropbox or Apple's iCloud at work because they cannot tolerate the risk of trusting third-party cloud services to provide adequate security for their sensitive corporate data.

The resulting challenge for large and small enterprises is to provide convenient access methods for corporate data while maintaining full control over the security of all data storage and data passage.

Previous Options

Enterprises have traditionally relied on virtual private network (VPN) solutions to access corporate data, but they are difficult to use, as evidenced by employees' demonstrated preference for public cloud solutions. Furthermore, with a VPN, you will need additional solutions to enable mobile

access, web browser based access, sync & share, team collaboration functionalities.

Gladinet Solution

Gladinet Cloud Enterprise provides a solution for the problem above by wrapping all the public Gladinet Cloud features into a Windows Installer (MSI) package that you can install on your own servers.

Benefit 1

Gladinet Cloud Enterprise is built on top of the Microsoft Web Platform, including IIS, ASP.NET and SQL Server (Standard/Express). It is fairly straight forward to prepare a Windows Server for the underlying platform or scale up to multiple servers. It is easy to setup and easy to do administrative work.

Benefit 2

Since Gladinet Cloud Enterprise is a Windows Installer (MSI) package, with a handful of clicks (Next), you can have the solution installed and ready in a matter of minutes. It is easy to get started.

Benefit 3

Gladinet Cloud Enterprise integrates tightly with your Active Directory domain. It also integrates tightly with your own storage, such as your own file server storage, your own OpenStack storage, EMC Atmos storage and etc. It is easy to plug in

your existing user management and storage systems.

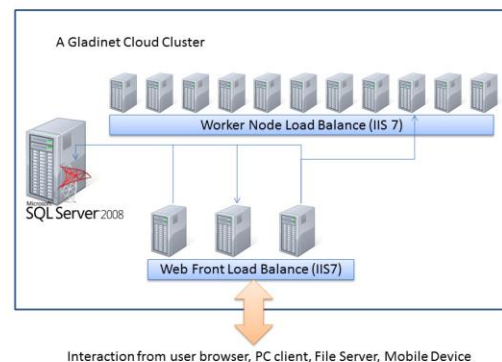
Implementation

It is recommended that Gladinet Cloud Enterprise be installed on Windows 2008 32-bit servers as shown in the following configuration.



You will install the Gladinet Cloud Enterprise inside a DMZ zone. It will have a public DNS name that client devices can use to connect.

Below is a diagram for a Gladinet Cloud Enterprise Cluster, when it has more than one server in the server farm.



For detailed implementation and deployment information, please reference the *Gladinet Cloud Cluster Deployment Guide*.

Summary

Gladinet Cloud Enterprise leverages the strength of the public Gladinet Cloud by

packaging it into a simple Windows Installable package.

The end result is an easy to deploy solution that Enterprises can deploy for their own storage, with deep Active Directory integration.

For more information, please contact Gladinet Support @

support@gladinet.com

or visit

<http://www.gladinet.com>