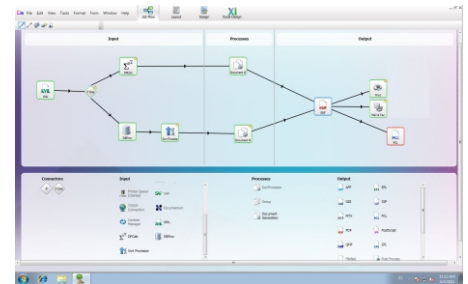


DocPath® Ipanema Technology™: the core technology of DocPath software

Revolutionizing document software

DocPath solutions are now based on **DocPath Ipanema Technology**, the core technology of the latest DocPath Solutions. This new, collaborative, multi-platform and multi-language design environment consists of a technological change which has never been experienced before, offering companies a radical new way of meeting their document needs.

The main goal of **DocPath Ipanema Technology** is to **bring all the possibilities of document technology** to all types of users. This means eliminating the confines of technological possibilities in document software. **Ipanema Technology** is an evolution of previous DocPath solutions by offering the possibility of integration with existing applications using old and new technologies and by improving the overall process design of the document life cycle.



The fundamental aspects of this new technology are the graphical design of process flows and an optimized electronic forms environment

Main Characteristics of DocPath Ipanema Technology

Easy to use

A single visual tool, composed of different, intuitive and highly visual components, drastically simplifies document technology and brings it to all types of users. This straightforward tool, **based on the drag&drop** principle, enables users to organize data in a tree structure and to easily define process flows.

Flexible

DocPath Ipanema Technology **meets the requirements of any company** by allowing access to non-sequential data at any part of the document generation process. Moreover, any type of input data is supported for any action to be performed.

Process Optimization

Documents are designed visually in three simple steps, which significantly increases the productivity brought about with DocPath Ipanema Technology. This new technology can also be integrated with previous DocPath solutions, improving existing resources and enhancing overall performance.

Standard and Organized Data

One of the main advantages offered by DocPath Ipanema Technology is the possibility to work with a tree structure that contains all **data in XML format**, the standard format to which the input data gets converted.

Main Technical Features of DocPath Ipanema Technology

- DocPath Ipanema Technology contains two basic modules, which have been developed in **two different technologies**:
 1. **DocPath Builder**: the design environment and the visual tool used to define the process flow (job flow) as well as the construction logic of each form.
 2. **DocPath Job Launcher**: the production engine. This program launches project files to generate documents, access databases, perform calculations, etc.
- All job definitions are included in a **single project file**, which significantly simplifies configuration and definition of each project.
- Technology based on JAVA and .NET programming languages, which enable **Unicode** support and operation on **64 bit systems**.
- Implementation in centralized, distributed and/or mixed environments.
- Optimized **electronic forms environment**.
- Easy and **visual configuration**.
- Project with dynamic forms can be **issued for online publication**.
- Integration with everyday applications such as **Word and Excel**.

DocPath Solutions driven by DocPath Ipanema Technology

Business Solutions

- **Business Suite Essential™**: allows dynamic generation of professional documents.
- **Business Suite Industrial™**: enables designing industrial documents.
- **Business Suite Pro™**: allows users to generate documents with professional design and distribute them via email or fax.
- **Boulder Suite Essential™**: easily migrate from InfoPrint™ Designer. For companies with basic printing requirements.
- **Boulder Suite Pro™**: incorporates multiple output options and distribution via printers, fax and email.
- **Boulder Suite Advanced™**: allows an unlimited number of printouts.

Enterprise Solutions

- **Remote Office Printing™**: generates documents in remote environments.
- **High Volume Docs Generation™**: high-volume printing with a wide variety of output formats.
- **Aspen™**: powerful document storage and retrieval manager.
- **WebDocs Generation™**: document manager that stores business documents and retrieves the document via the Web in real time.
- **WebDocs Filler™**: for creating documents rapidly and using them as forms to be manually filled out on the Web.
- **DocPath for Citrix® XenApp™**: flexible tool to design and manage superior quality documents in Citrix® environments.