

DENTCA™
CAD/CAM DENTURE

SECTION A-A

SYSTEM	TRAY			
AG NO	widths	10.6	MAT'L	10.6
IS NAME	DENTCA part number 5			

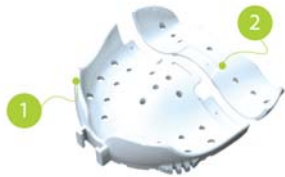
TRAY MANUAL

Video instructions are also available on our website at www.dentca.com

TRAY MANUAL

Video instructions are also available on our website at www.dentca.com

Components



Maxillary tray



Mandibular tray



Center pin

1 Anterior part of Maxillary Tray

2 Posterior part of Maxillary Tray

3 Anterior part of Mandibular Tray

4 Posterior parts of Mandibular Tray

5 Center pin

1. Tray Selection

Select the correct tray size (Small, Medium, Large, Extra Large) that best fits size of the patient's mouth.

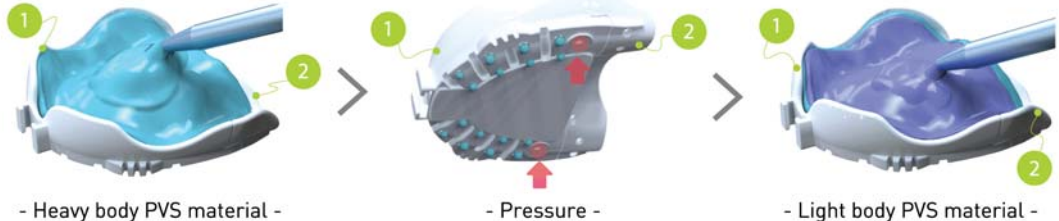
2. Making the Maxillary Impression

After making sure the posterior part (part #2) is attached, load the fast-setting heavy or medium body PVS material to completely fill the maxillary tray. Insert the tray in patient's mouth and **make sure the entire tray is completely seated** by firmly pressing the finger spots at the back of the tray.

Once the tray is seated, perform border molding as follows:

- 1) Have the patient open his/her mouth wide, then closed,
- 2) Have the patient move his/her jaw side by side,
- 3) Pull patient's right cheek out and down,
- 4) Pull patient's left cheek out and down,
- 5) Pull patient's upper lip down

Repeat these border molding movements 3 to 4 times until the material is hardened, Setting time varies from different manufacturers, so please check your PVS impression material instructions, Once the material is set, remove the tray and check the impression. If a modification is needed, make sure to adjust the tray before taking the wash impression. For example, if the edge of the tray shows through the impression material, adjust it by grinding the edge down a couple millimeters with a slow speed hand piece. Then, wash the impression with fast-setting light body PVS material following the same procedure as before. When using the light body PVS material, load it just enough to lightly cover the entire surface of the tray.



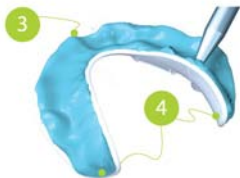
3. Making the Mandibular Impression

In case the center pin is inserted, please remove the centre pin. Same as the maxillary tray, make sure the posterior pieces (parts #4) are attached and load the fast-setting heavy or medium body PVS material to completely cover the entire mandibular tray. Insert the mandibular tray in patient's mouth and **make sure the entire tray is completely seated** by firmly pressing down the finger spots at the back of the tray with your fingers.

Once the tray is seated, perform border molding as follows:

- 1) Have the patient stick his/her tongue out,
- 2) Squeeze in patient's both cheeks to get the disto-buccal corners while the patient's mouth is completely relaxed,
- 3) Pull patient's right cheek,
- 4) Pull patient's left cheek,
- 5) Pull patient's lower lip up

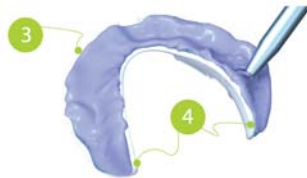
Repeat these border molding movements for 3 to 4 times until the material is hardened, for about 2 minutes and 30 seconds. Once the material is set, remove the tray and check the surface of the impression. If borders of tray are showing through the impression material, adjust it by grinding the edge down a couple millimeters with a slow speed hand piece. Then, wash the impression with fast-setting light body PVS material following the same procedure as before.



- Heavy body PVS material -



- Pressure -



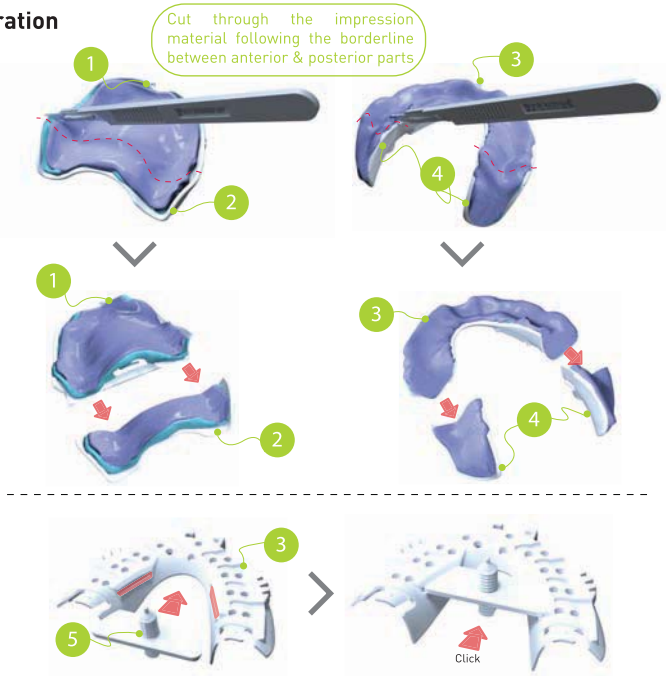
- Light body PVS material -

4. Vertical Dimension of Occlusion Preparation

Cut the PVS material on the maxillary and mandibular trays with a surgical blade in a single line to separate the posterior parts (parts # 2 & #4) from the anterior parts (parts #1 & #3). Cut both trays following the borderline between the anterior and distal parts and detach the posterior parts (parts #2 & #4).

When separating the posterior parts, be careful not to break the tray by bending it; instead, wiggle the tray loose and pull out the posterior parts. Trim the excess impression material covering the outer surfaces of trays so that the bite registration material can seat on.

Insert the center pin (part #5) in the mandibular tray (part #3) by clicking it in.



5. Measuring the Vertical Dimension of Occlusion and Centric Relation / Taking Bite Registration

After inserting the center pin (part #5) in the mandibular tray, set the center pin to the highest point before measuring the vertical dimension. Make sure posterior parts are detached and insert both anterior parts of mandibular and maxillary trays (parts #1 & #3) in patient's mouth.

Then, lower the center pin (part #5) until patient's lips naturally touch each other without the lips having any tension. If necessary, you may cut the center pin in half to shorten the pin. If the patient has an existing denture, determine the vertical dimension by adjusting the center pin (part #5) to match the pre-determined vertical dimension.

For the patient's comfort, trim the excess pin thread out of the pin hole before taking the centric relation record. After you get the vertical dimension, determine the centric relation location by having the patient move his/her jaw front and back several times to figure out the most posterior position.

After you determine the centric relation position, fill up the gap with bite registration material on both sides as well as on the front.

After the bite registration material is set, remove the entire piece from a patient's mouth.



(**The pointed part of the center pin should be aiming upward when measuring the vertical dimension & centric relation record.)

6. Measuring the Upper Lip Length

Using the DENTCA lip ruler or any lip ruler you have, measure the upper lip length. Measurement should be from incisive papilla to upper lip line, which will be needed for the online order process (Refer to the [Pic. 1-1 & 1-2] below). After placing your order online, pack everything, including anterior parts of both maxillary and mandibular impressions with the bite registration material in between and detached posterior parts of both maxillary and mandibular impressions both and ship them to DENTCA, Inc. at:

3434 W. 6th Street, Ste 400A

Los Angeles, CA 90020



“Please send to DENTCA”

How to use DENTCA Lip Ruler:

[Pic. 1-1]

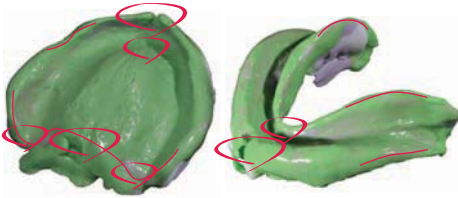


[Pic. 1-2]



Examples of good and bad impression

[Pic. 2-1] Good impressions



Both maxillary and mandibular impressions came out clean; they show no junction between the first impression and wash impression.

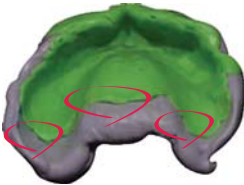
A good maxillary impression should capture the following areas:

- Post dam area
- Hamular notch
- Palatine fovea
- Incisive foramen
- Frenum areas

A good mandibular impression should capture the following areas:

- Pearshaped pad
- Buccal shelf
- Frenum areas
- Lingual flange

[Pic. 2-2] Bad impression #1



The impression didn't come out clean due to incomplete seating during the wash impression.

[Pic. 2-3] Bad Impression #2



The PVS material did not completely cover the outer rim of the tray.

Benefits of DENTCA vs. Conventional Denture:

- 1 CAD/CAM Precision & Accuracy
- 2 Saves chair time: 45 minutes vs. 3 hours
- 3 Eliminates human error
- 4 2 patient visits vs. 5 patient visits
- 5 10 days vs. 30 days to fabricate
- 6 Easy online ordering and \$0 startup cost



DENTCA Tray

Patented design

3D ready tray

Statically & scientifically designed

Precise impression

CR & VD with just one impression

DENTCA Standard

CAD/CAM designed

Superb fit (no human error)

Balanced setup

Light weight & void free

High wear/fracture resistance acrylic

DENTCA Premium

Any premium teeth brand
of doctor's choice

Special gingival characterization

Special occlusal scheme

All unique features
of DENTCA Standard are included

How it works





www.dentca.com



DENTCA, Inc.

3434 W. 6th Street Ste 400A, Los Angeles, CA 90020

Customer Service: 855-433-6822

Tel: 213-738-7539

Fax: 213-738-7395

CAD / CAM DENTURE

www.dentca.com

info@dentca.com