

EZMaxMobile

TODAY'S MOBILE SOLUTION FOR MAXIMO



PRODUCT OVERVIEW JUNE 2013



What is EZMaxMobile?

EZMaxMobile is a state of the art mobile solution that was designed and developed for IBM's Maximo Asset Management (EAM) software. EZMaxMobile works online (connected) as well as offline (disconnected) and is available for Apple, Android, Windows Phone and BlackBerry devices as well as any desktop, laptop, tablet or ruggedized device that runs the Safari or Firefox browser.

EZMaxMobile provides:

- A user-friendly web-based package giving access to Maximo on mobile devices.
- Seamless transition from real-time to offline mode when a user's connection to the Maximo environment is lost.

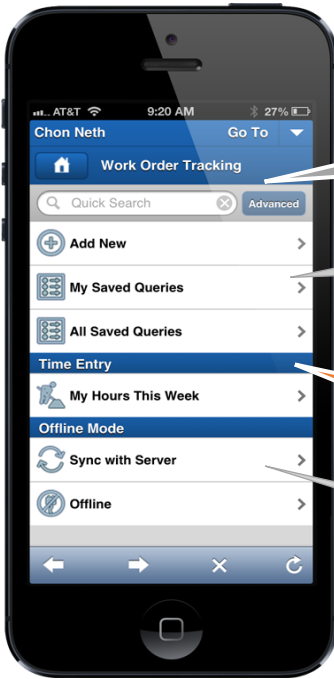
Product Features

- **Full Maximo Functionality**
- **Work Order Management**
- **View Job Tasks and Safety Plans**
- **Inventory Tracking**
- **Issues and Transfers**
- **Physical Counts**
- **Asset auditing with classifications**
- **Purchase Requisitions and Purchase Orders**
- **Meter Readings,**
- **Inspections/Rounds**
- **Capture Electronic Signatures**
- **Assignment Manager**
- **Built-in Bar Code Scanning**
- **Upload Photo Attachments**
- **Seamless transition from on-line to offline mode**
- **Offline mode easily handles thousands of records**
- **Simple synchronization process**
- **Adheres to all Maximo security, business rules and work flows**
- **And much more!**

Using EZMaxMobile

The EZMaxMobile user must be a registered user within Maximo. EZMaxMobile adheres to ALL Maximo security and work group settings. EZMaxMobile only provides functionality and module accessibility to the user if it's permitted within Maximo.

Main Screen



The functionality displayed on this screen is also based on the user’s Maximo security and group settings

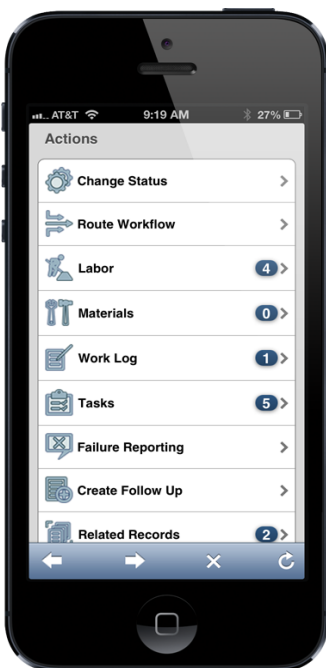
The Work Order module where you can search for work order info, enter new work orders or modify existing work orders

Provides the query functionality relevant to the work order module

Provides the user with the functionality to enter the actual time and labor

Provides the users with the option to work offline after the data get synchronized

Work Order ‘Action’



This ‘Action’ screen allows the user to perform a wide range of work order related functions. Specific actions are only made available to the user if authorized via Maximo’s security group settings

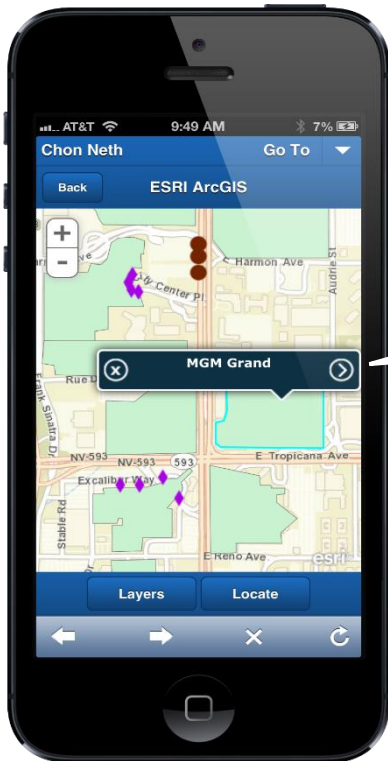
- Change the status of a work order
- Assign or re-assign work orders
- Record labor hours on the work order
- Record materials (material or inventory/item lookup)
- Instantly create a follow-up work order within Maximo
- View tasks, modify task status and record work performed on a task. Record observations and measure points
- Record failure reporting data
- Enter work performed information relevant to a work order or a specific task
- Upload photos and view attachments stored within Maximo that are associated with a work order, location or asset

Advanced Benefits

- EZMaxMobile works in **ONLINE** (connected/real time) or **OFFLINE** mode (disconnected)
- Majority of EZMaxMobile's features are available via the device's web browser thus requiring NO client installation or configuration.
- **Absolutely NO additions or changes** are made to the Maximo database environment (no extra Maximo tables, triggers stored procedures, etc. are needed for EZMaxMobile)
- Record meter readings, measurements and observations for assets, work orders or specific tasks on a job plan
- Record labor hours, material usage, work performed for work orders or specific tasks on a job plan
- Change status and/or priority of a work order via online mode or offline mode
- Assign, re-assign and schedule work orders via online mode or offline mode
- Instantly generate a follow-up work order – no need to wait until you're able to sync your device with Maximo
- Perform real time asset audits, inspections and the recording of new assets into Maximo
- Provides GPS data gathering capabilities for items such as assets, locations and work orders
- Allows automatic picture upload into Maximo's linked document module for transactions that are associated with locations, assets, work orders and inventory items
- Permits bar code scanning via the device's camera, no special scanning attachment required and you can scan asset, location, work order or inventory item bar codes

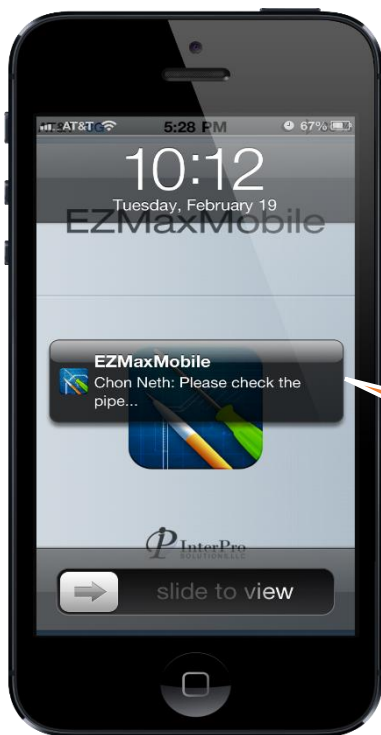
Now more new features are incorporated into the EZMaxMobile, which increases the efficiency and productivities of today's mobile workforce by offering an even more robust mobile solution for asset management.

Offers ESRI ArcGIS integration for work orders to allow additional mapping intelligence.



Interacts with ArcGIS sourced maps to visually map assets, locations, and work orders

Features push notification to allow automatic assignments to the field as they occur.



Automatically notifies users of new service requests, follow up work orders and tasks

Configuration:

- No Separate Server Hardware Required
- No Client Installation Required
- Mobile with Real Time, Anytime Maximo Access via Smartphone Browser
 - WiFi, 3G, 4G or VPN connectivity
 - Remote Operation
 - iPhone, iPad, iPod Touch, Android, BlackBerry, Windows Phone 8, etc. compatible
 - Maximo versions 6x and 7x are supported