



Home Energy Conservation Products

Attic Access Solutions for the New Building Codes

Mark D. Tyrol

Mark D. Tyrol, P.E.
President, Battic Door Energy

www.batticdoor.com

508.320.9082
mark@batticdoor.com

2009 International Energy Conservation Code (IECC)

Topic	2006 IECC	2009 IECC
Access hatches and doors	None	402.2.3 Access hatches and doors. Access doors from conditioned spaces to unconditioned spaces (e.g., attics and crawl spaces) shall be weatherstripped and insulated to a level equivalent to the insulation on the surrounding surfaces.

2009 International Residential Code (IRC)

Topic	2006 IRC	2009 IRC (page 469)
Access hatches and doors	None	N1102.2.3 Access hatches and doors. Access doors from conditioned spaces to unconditioned spaces (e.g., attics and crawl spaces) shall be weatherstripped and insulated to a level equivalent to the insulation on the surrounding surfaces.

Energy Star Thermal Bypass Checklist

Topic	5.1	5.2
Attic / Ceiling Interface	Attic Access Panel shall be fully gasketed and insulated	Attic Drop-down Stair shall be fully gasketed and insulated

Energy Star does not supersede Code requirements

Solutions for the New Code Requirements

Battic Door

**ATTIC ACCESS
SOLUTIONS
for the
NEW ENERGY
CODES**



Battic Door

E-Z HATCH



**R-42+ ATTIC
ACCESS HATCH
22x30**

Battic Door

**R-50+ ATTIC
STAIR COVER**



**3 SIZES:
22x54
25x54
30x54**

Mark D. Tyrol, P.E.
President, Battic Door Energy

www.batticdoor.com

508.320.9082
mark@batticdoor.com

Solutions for the New Code Requirements



E-Z Hatch

R-42+ Attic Access Hatch

Exceeds all Code Requirements

22x30, Pre-finished white

Wood frame & trim

Triple gasketed, air tight seal

Solutions for the New Code Requirements



E-Z Hatch

R-42+ Attic Access Hatch

**Fits between trusses 24”
o.c. and joists 16” o.c.**

Lightweight door

Easy 1-person install

**Alternative to pull down
ladders**

Solutions for the New Code Requirements



Deluxe E-Z Hatch

R-42+ Attic Access Hatch

Deluxe model with 4-point lock and recessed handles also available

Can be used in kneewalls

E-Z Hatch Easy Install Instructions – STEP #1



**Select location to
install door.**

Mark D. Tyrol, ,P.E.
President, Battic Door Energy

www.batticdoor.com

508.320.9082
mark@batticdoor.com

E-Z Hatch Easy Install Instructions – STEP #2



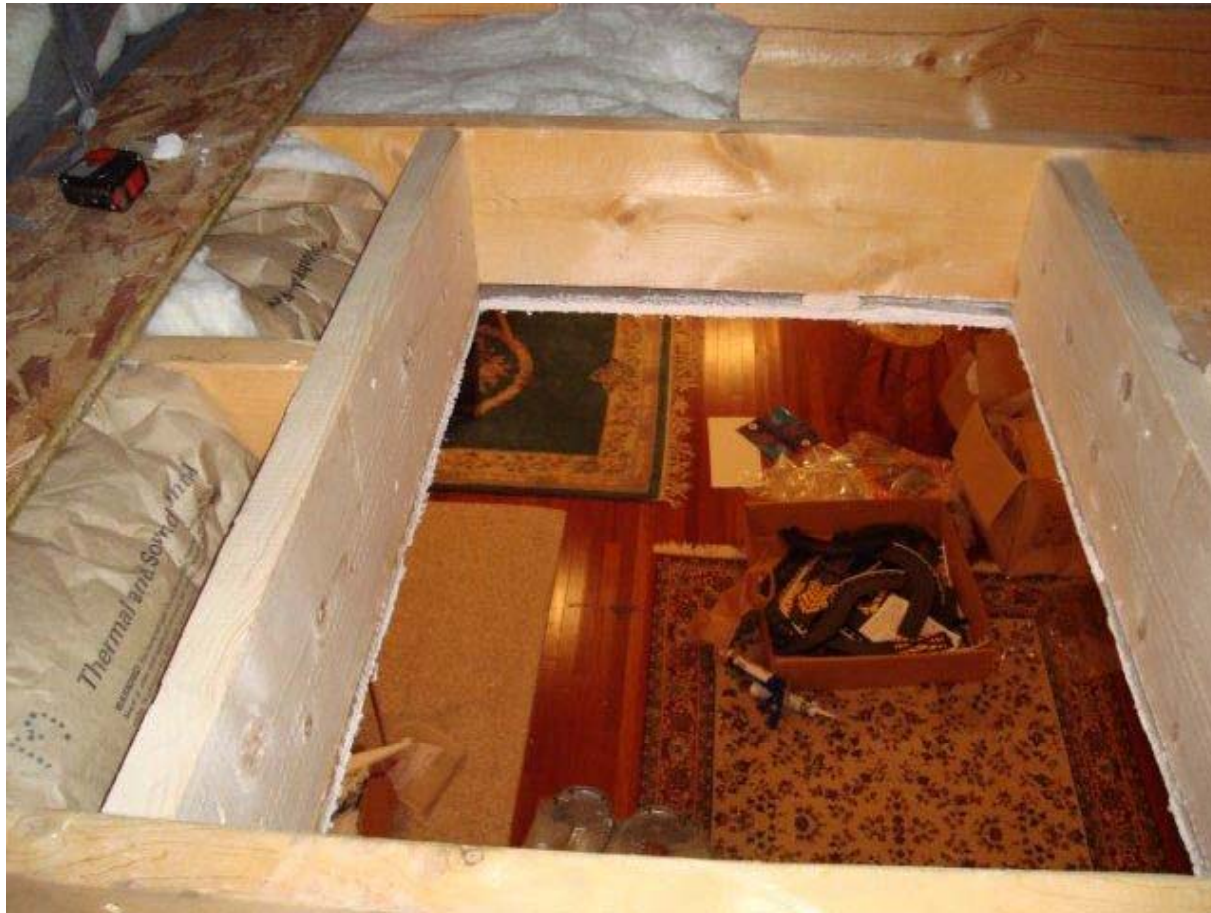
**Cut hole in
sheetrock.**

Mark D. Tyrol, ,P.E.
President, Battic Door Energy

www.batticdoor.com

508.320.9082
mark@batticdoor.com

E-Z Hatch Easy Install Instructions – STEP #3

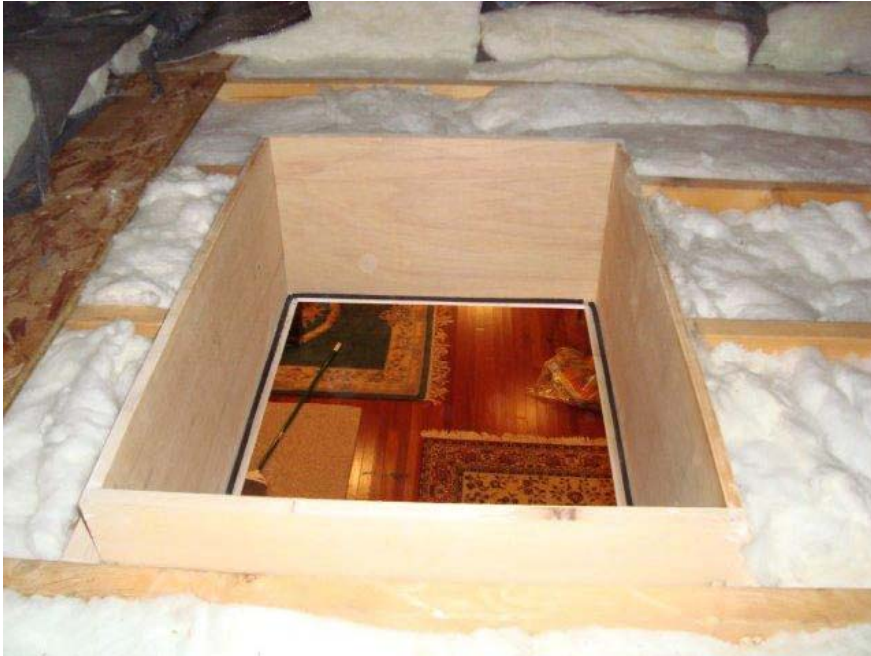


Cut joist and add headers (if required).

NOTE: Only if installed between joists 16 in. o.c.

FITS BETWEEN TRUSSES 24" o.c.

E-Z Hatch Easy Install Instructions – STEP #4



Install door frame.



Mark D. Tyrol, P.E.
President, Battic Door Energy

www.batticdoor.com

508.320.9082
mark@batticdoor.com

E-Z Hatch Easy Install Instructions – STEP #5



Install door.



Mark D. Tyrol, P.E.
President, Battic Door Energy

www.batticdoor.com

508.320.9082
mark@batticdoor.com

E-Z Hatch Easy Install Instructions – STEP #6



Enjoy!

Mark D. Tyrol, ,P.E.
President, Battic Door Energy

www.batticdoor.com

508.320.9082
mark@batticdoor.com

Solutions for the New Code Requirements

Battic Door

**ATTIC ACCESS
SOLUTIONS
for the
NEW ENERGY
CODES**



Battic Door

E-Z HATCH



**R-42+ ATTIC
ACCESS HATCH
22x30**

Battic Door

**R-50+ ATTIC
STAIR COVER**



**3 SIZES:
22x54
25x54
30x54**

Mark D. Tyrol, P.E.
President, Battic Door Energy

www.batticdoor.com

508.320.9082
mark@batticdoor.com

Solutions for the New Code Requirements



Battic Door Attic Stair Cover

R-50+ Attic Stair Cover

Available in 3 sizes:

22x54

25x54

30x54

Easy 1-person install

No Tools Required

Mark D. Tyrol, P.E.
President, Battic Door Energy

www.batticdoor.com

508.320.9082
mark@batticdoor.com

Battic Door Easy Install Instructions – STEP #1



Assemble box and bring parts into attic.

Mark D. Tyrol, P.E.
President, Battic Door Energy

www.batticdoor.com

508.320.9082
mark@batticdoor.com

Battic Door Easy Install Instructions – STEP #2



Insert R-50 fiberglass into reflective shield.

Mark D. Tyrol, ,P.E.
President, Battic Door Energy

www.batticdoor.com

508.320.9082
mark@batticdoor.com

Battic Door Easy Install Instructions – STEP #3



Insert box into reflective shield over insulation.

Mark D. Tyrol, ,P.E.
President, Battic Door Energy

www.batticdoor.com

508.320.9082
mark@batticdoor.com

Battic Door Easy Install Instructions – STEP #4



Drop box down onto gasket and you are done.

Mark D. Tyrol, ,P.E.
President, Battic Door Energy

www.batticdoor.com

508.320.9082
mark@batticdoor.com

Battic Door Easy Install Instructions – STEP #5



Enjoy!

Mark D. Tyrol, P.E.
President, Battic Door Energy

www.batticdoor.com

508.320.9082
mark@batticdoor.com

In Summary – Building Codes Have Changed

Topic	2006 IECC	2009 IECC
Access hatches and doors	None	402.2.3 Access hatches and doors. Access doors from conditioned spaces to unconditioned spaces (e.g., attics and crawl spaces) shall be weatherstripped and insulated to a level equivalent to the insulation on the surrounding surfaces.

In Summary – Here Are Two Solutions

Battic Door

**ATTIC ACCESS
SOLUTIONS
for the
NEW ENERGY
CODES**



Battic Door

E-Z HATCH



**R-42+ ATTIC
ACCESS HATCH
22x30**

Battic Door

**R-50+ ATTIC
STAIR COVER**



**3 SIZES:
22x54
25x54
30x54**

Mark D. Tyrol, P.E.
President, Battic Door Energy

www.batticdoor.com

508.320.9082
mark@batticdoor.com

Battic Door

Home Energy Conservation Products

THANK YOU!

Mark D. Tyrol, P.E.
President, Battic Door Energy

www.batticdoor.com

508.320.9082
mark@batticdoor.com