



# Provance® Data Management Pack for Microsoft® System Center 2012



The Provance® Data Management Pack simplifies, speeds and automates the process of getting data into and out of the Microsoft® Server and Cloud Platform while simultaneously improving the consistency and accuracy of your data. It lets you quickly and easily source, normalize and import the data you need to support effective IT service delivery and operational management of your client, cloud and data center environments. The Provance Data Management Pack supplements Microsoft System Center 2012 connectors to give you access to data from other sources, including IT service desks, import and discovery tools, network systems management solutions, user management systems, Lightweight Directory Access Protocol (LDAP) directories, Configuration Management Systems (CMSs), Configuration Management Databases (CMDBs), and ERP and CRM systems. You can use data from just about any source to add or update Configuration Items (CIs) in the central System Center CMDB, including custom classes and properties. An easy to use graphical interface makes it simple to create and save templates that let you automate data import from both files and databases, without coding or extensive knowledge of the CMDB structure. By reducing the need for external manipulation and data cleansing, you'll also significantly improve the accuracy and consistency of the CIs in your System Center CMDB.

## FEATURES

Runs Natively on System Center 2012

Intuitive Visual Interface

Transform and Normalize Data at Import

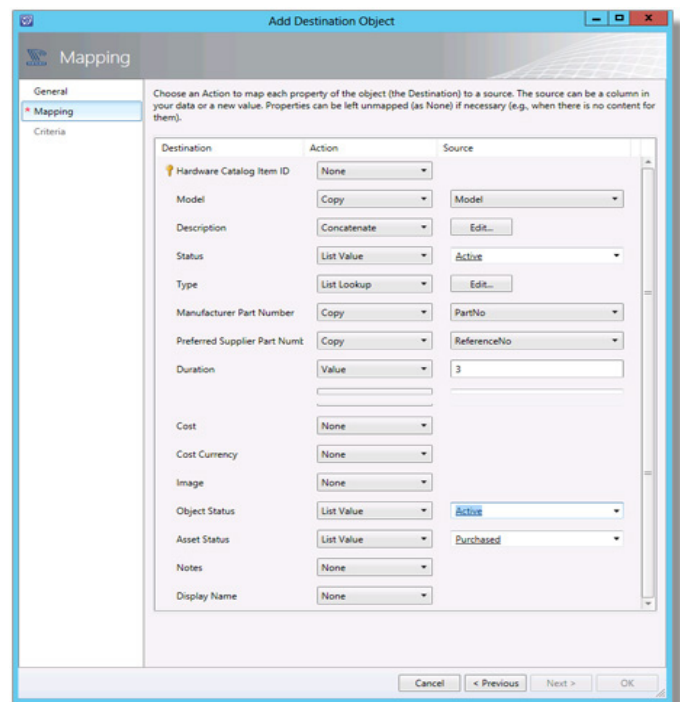
Import Data Directly from Microsoft SQL Server® Databases and LDAP Directories

Save and Reuse Data Import Definitions

Schedule and Automate Data Import

Import CSV Files Without XML Coding and Schema Guesswork

Simplified View of CMDB Entities and Relationships



# SIMPLIFY, SPEED AND AUTOMATE DATA IMPORT

---

## Get the Provance Data Management Pack for Microsoft® System Center 2012

The Provance Data Management Pack makes it easy to specify all the mappings, relationships, update conditions and values for data you want to import from external sources into your System Center CMDB. You simply use forms and wizards to browse the CI classes and properties in the System Center CMDB and select the destinations for each column from your source file or database. An intuitive, visual interface allows you to readily understand the relationships between CIs in your CMDB, and graphically illustrates the relationships chosen for inclusion in your import. In addition to importing values sourced from file or database records, the Provance Data Management Pack also lets you populate fields with constant values, values from the lists in your System Center 2012 – Service Manager Library, and list values chosen dynamically at import based on conditions you've chosen. Once you've determined how you want the data to be mapped, related and represented in the CMDB, you then specify criteria that determine whether you import all the records, only new data or just make partial updates to existing data. The Provance Data Management Pack makes it easy to import data frequently for regular incremental updates or ongoing synchronization with other systems and applications by letting you save your import definitions as templates for repeated use. The Provance Data Management Pack can be run using PowerShell, which allows you to schedule and fully automate data imports using scripts, workflow or System Center Orchestrator.

## Import Data Directly from Microsoft SQL Server® and LDAP

The Provance Data Management Pack supplements the Microsoft System Center 2012 Service Manager connectors for Active Directory®, System Center Configuration Manager, System Center Operations Manager, System Center Orchestrator, System Center Virtual Machine Manager and CSV import with the ability to access data directly from Microsoft SQL Server® databases and LDAP directories. Whether you are making a onetime data migration to the Microsoft Server and Cloud Platform or require ongoing data synchronization between System Center 2012 and other applications, the Provance Data Management Pack lets you access data directly from third party systems maintained in SQL Server database repositories. You can now also quickly and easily populate CIs in the System Center CMDB with information you already store and manage in one or more LDAP directories.

## Native to the Microsoft Server and Cloud Platform

As a process management pack, the Provance Data Management Pack is built and operates entirely on the Microsoft Server and Cloud Platform. It's not integrated – it runs natively as part of the unified System Center 2012 architecture. The Provance Data Management Pack interface is accessed seamlessly as a workspace within the System Center 2012 Service Manager console. Only the Provance Data Management Pack gives you the ability to see the complete structure and schema of your System Center CMDB and all the potential relationships between Configuration Items, including customizations you've made using the Service Manager Authoring Tool, extensions by third party management packs and relationships that cannot be represented by projection types. Furthermore, the Provance Data Management Pack is the only mechanism that lets you filter and transform records at time of import based on data already within the System Center CMDB.

[www.provance.com](http://www.provance.com) | [info@provance.com](mailto:info@provance.com)

85 Bellehumeur, Gatineau, QC, J8T 8B7 Canada | 305-1425 K Street, Washington, DC 20005 USA

