

Coherix, Inc. Overview

Vision solutions for metrology & assembly verification.

Measure. Inspect. Visualize.

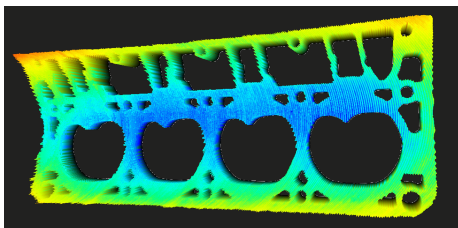
Coherix, Inc. is a global supplier of high-speed, high-definition 3D measurement and inspection solutions. Based on multiple non-contact technology platforms, our solutions are designed to improve the management of manufacturing processes. Coherix primarily serves the automotive and semiconductor industries, providing robust 3D vision solutions that enable real time, proactive variation reduction and root cause failure analysis.

Quick Facts:

- Headquartered in Ann Arbor, MI
- Founded in 2003
- Offices in Germany, Japan, China, Singapore & Sweden
- Products installed globally: USA, Japan, China, Singapore, Brazil, Germany, Sweden, Mexico, Canada, Malaysia & Korea
- Expertise in the automotive & semiconductor industries
- Strategic relationships with Universities world-wide. Research & Development partnership with the University of Michigan.

Full 3D Planar Surface Metrology: ShaPix®

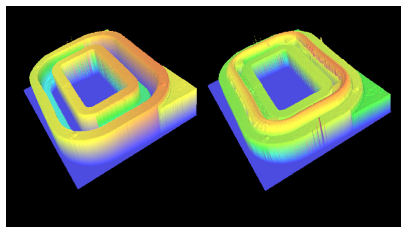
- Micron level measurements of flatness & waviness of planar surfaces
- High-definition 3D images & reports
- High-speed, easy to use, non-contact



Engine head height map

Assembly Verification & Error Proofing: Tru3D™

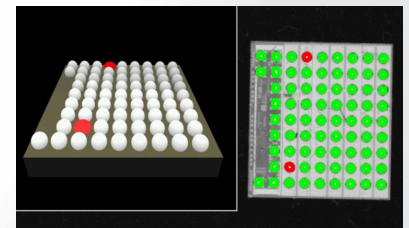
- Images real 3D shape & geometry of parts to identify & contain pass through defects
- Self-contained, smart sensor architecture
- Easy to use, non-contact, no moving parts



Full 3D gasket inspection & comparison

High-Speed 2D & 3D Vision Inspection: 3DX™ & OPIS™

- High-definition measurements of moving parts, meets strictest accuracy demands for semiconductors
- Multiple parts measured simultaneously
- Easy setup & calibration



3D bump/ ball inspection



Data Driven Results.

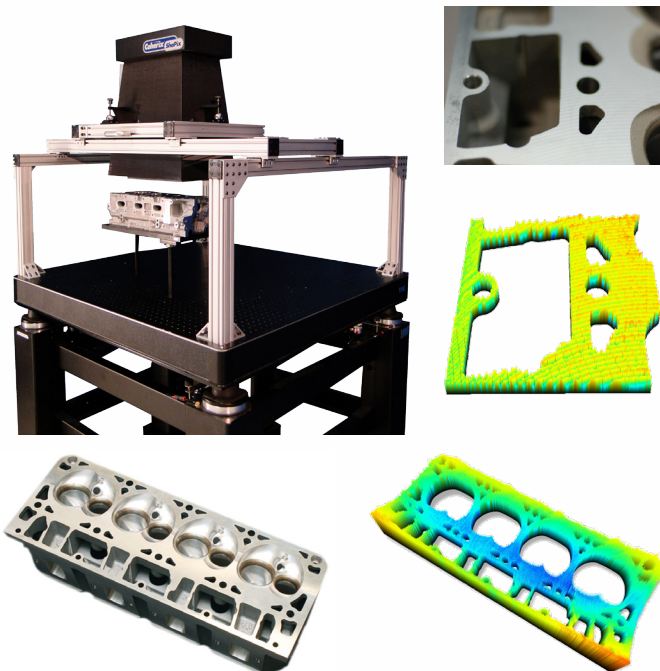
Robust3D Solutions.

A company backed by quality:

The professionals behind the Coherix technology and software development are committed to quality, efficiency and innovation. We're in the business of problem solving and we fully believe that the data our solutions provide empowers our customers in a significant way.

Armed with our robust3D inspection solutions, our customers can create more reliable processes. The data we provide enables them to prevent unscheduled downtime, eliminate scrap and increase process throughput. The long-term result? Increased global competitiveness.

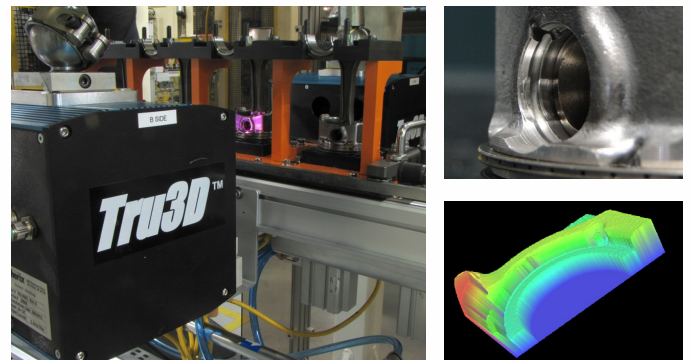
ShaPix® - Full 3D Planar Surface Metrology



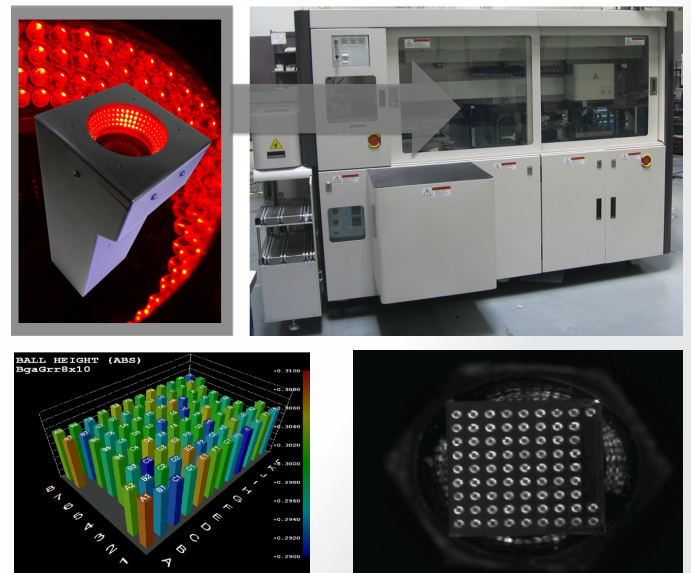
Coherix philosophy:

Visualizing your process with high-definition data and easy to understand images leads to robust solutions. If you can measure it better, you can make it better. If you can make it better, you can enable designers to design it better. We are committed to helping our customers take their products to the highest quality.

Tru3D™ - In-line Assembly Verification



3DX™ - High-Speed Semiconductor Inspection



Coherix