

HIGHLIGHTS

- **Security Intelligence**
 - Situational Awareness
 - 360° Visibility
 - Analysis and Reports
 - Objects and attributes
 - Users, groups and roles
 - Tasks and Events
- **Continuous Data Access**
 - By API (no reliance on logs)
 - SpyLogix Message Design
- **Communication Services**
 - Message Broker
 - Multi-platform
 - Message Store/Forward
 - Message Mirroring
 - 1:Many Routing
 - Message Streaming
 - Web Services (data in)
- **Automatic Data Management**
 - Intelligent Data Handling
 - Historical Database
 - LINQ/Odata Enabled
- **Real-Time Data Actualization**
 - ActionLogix™
 - Policies
 - Alerts | Notifications
 - Event Synthesis
 - Message Forwarder
 - Extensibility Layer
 - Web Services (data out)
 - Interactive Console
 - Data Query and Filter
 - Data Analysis
 - Reports
 - Data Export | Sharing
- **SpyLogix Enterprise**
 - SpyLogix Platform
 - SpyLogix Modules
 - CA Directory
 - CA IdentityMinder
 - CA SiteMinder
 - IdF Gateway (IBM System z and i)
 - LDAPv3 Directory
 - MS Active Directory
 - MS IIS
 - MS FIM 2010
 - MS User Security
 - MS Windows Server
 - RadiantOne VDS
 - Sun Java System Directory Server
 - VMware vSphere
 - Module SDK

SpyLogix™ for IdentityMinder saves time, money and resources for organizations seeking enhanced manageability for IdentityMinder by CA Technologies. SpyLogix for IdentityMinder makes it easy to continuously monitor and efficiently use native data for improving visibility into historic and daily operations of IdentityMinder to facilitate:

- Continuous monitoring for proactive operational awareness
- Real-time information for effective situational analysis
- Efficient troubleshooting for rapid issue resolution
- Information for “identity compliance” or IT-GRC

It is one of a series of modules by IdentityLogix that provides native IdentityMinder data in real-time to one or more SpyLogix Platform security middleware servers to enable these benefits.

Monitored IdentityMinder data includes objects, attributes, users, groups, roles, tasks and events. This information is critical for operational efficiency and ongoing support, such as providing security intelligence for organizations needing continuous management for improved governance, risk and compliance control over critical information assets secured by IdentityMinder.

SpyLogix for IdentityMinder and Platform Key Capabilities

- Continuous direct native data access
- Advanced message broker communications for fast centralization of data
- Automatic message data management
- Real-time message data actualization services for effectively using data

SpyLogix Platform data actualization technologies include an interactive dashboard for data query, analysis and output of security information in popular formats or reports. A web service for exchanging data with other systems or data visualization tools. And ActionLogix™ for policy-based analysis/action using streaming message data.

OVERVIEW

SpyLogix for IdentityMinder module designed to:

- Interface natively with IdentityMinder and stream or collect policy, object and task data
- Build data into well-formed messages, and
- Send messages to any SpyLogix Platform server(s) for
 - Automatic data management
 - Real-time data actualization

IdentityMinder support staff can use other modules, such as SpyLogix for Active Directory, CA Directory, CA SiteMinder and/or other complimentary SpyLogix modules.

Event Data

SpyLogix for IdentityMinder policy, object and task data is used for continuous awareness, troubleshooting and continuous management. All activity data is acquired natively using the following IdentityMinder's server event API:

Administrative Role and Task Events

Administrative Role	Administrative Task
CreateAdminRoleEvent	CreateAdminTaskEvent
DeleteAdminRoleEvent	DeleteAdminTaskEvent
ModifyAdminRoleEvent	ModifyAdminTaskEvent
ViewAdminRoleEvent	ModifySubmitWFActionButtonsEvent
	ViewAdminTaskEvent

Access Tasks	Bulk Task
CreateAccessTaskEvent	CreateBulkTaskDefEvent
DeleteAccessTaskEvent	DeleteBulkTaskDefEvent
ModifyAccessTaskEvent	ModifyBulkTaskDefEvent
ViewAccessTaskEvent	

All	None
CreateAccessTaskEvent	CreateNoneEvent
DeleteAccessTaskEvent	FeedObjectsEvent
ModifyAccessTaskEvent	ModifyNoneEvent
ViewAccessTaskEvent	ViewNoneEvent
AddToRelationshipEvent	
ChangeAdminPoliciesEvent	
ChangeOwnerPoliciesEvent	
CreateObjectEvent	

Organization	Group
CreateOrganizationEvent	AddGroupAdminGroupEvent
DeleteOrganizationEvent	AddGroupToGroupEvent
ModifyOrganizationEvent	CreateGroupEvent
ViewOrganizationEvent	DeleteGroupEvent
	ModifyGroupEvent
	RemoveGroupAdminGroupEvent
	RemoveGroupFromGroupEvent

Account	Account Template
AccountChangePasswordEvent	CreateOrganizationEvent
AccountResumeEvent	DeleteOrganizationEvent
AccountSuspendEvent	ModifyOrganizationEvent
AccountUnlockEvent	ViewOrganizationEvent
AssignAccountEvent	
CreateAccountEvent	
DeleteAccountEvent	
ModifyAccountEvent	
MoveAccountEvent	
UnassignAccountEvent	
ViewAccountEvent	

User Events

AccumulatedProvisioningRolesEvent	ForgottenUserIDEvent
ActivateUserEvent	ModifyUserEvent
AddGrantorOnAccessRoleEvent	RemoveFromGroupEvent
AddGrantorOnAdminRoleEvent	RemoveGrantorOnAccessRoleEvent
AddGrantorOnProvisioningRoleEvent	RemoveGrantorOnAdminRoleEvent
AddGroupAdminEvent	RemoveGrantorOnProvisioningRoleEvent
AddServiceToUserEvent	RemoveGroupAdminEvent
AddToGroupEvent	RemoveServiceFromUserEvent
AssignAccessRoleEvent	RenewServiceEvent
AssignAdminRoleEvent	RequestServiceToUser
AssignProvisioningRoleEvent	ResetPasswordEvent
CertificationNonCertifiedActionCompletedNotificationEvent	RevokeAccessRoleEvent
CertificationNonCertifiedActionPendingNotificationEvent	RevokeAdminRoleEvent
CertificationRequiredFinalReminderNotificationEvent	RevokeProvisioningRoleEvent
CertificationRequiredNotificationEvent	RequestServiceToUser
CertificationRequiredReminderNotificationEvent	ResetPasswordEvent
CertificationStatusCertifiedEvent	RevokeAccessRoleEvent
CertificationStatusInCertificationEvent	RevokeAdminRoleEvent
CertificationStatusNotCertifiedEvent	RevokeProvisioningRoleEvent
CertificationStatusRequiresCertificationEvent	RevokeServiceFromUser
CertifyRoleEvent	RevokeServiceWithoutWorkFlow
CreateUserEvent	SelfRegisterUserEvent
DeleteDelegationEvent	ServiceExpirationNotificationEvent
DeleteUserEvent	SynchUserRolesEvent
DisableUserEvent	SynchUserTemplatesEvent
EnableUserEvent	UserAttributeAddValueEvent
ForgottenPasswordEvent	UserAttributeRemoveValueEvent

Policy Events

Identity Policy Set	LAH Definition
CreateIdentityPolicySetEvent	CreateLAHDefinitionEvent
DeleteIdentityPolicySetEvent	DeleteLAHDefinitionEvent
ModifyIdentityPolicySetEvent	ModifyLAHDefinitionEvent
	ViewLAHDefinitionEvent

Policy Events Continued

Password Policy	PX policy
CreatePasswordPolicyEvent	CreatePolicyXpressEvent
DeletePasswordPolicyEvent	DeletePolicyXpressEvent
ModifyPasswordPolicyEvent	DisablePolicyXpressEvent
ViewPasswordPolicyEvent	EnablePolicyXpressEvent
	ModifyPolicyXpressEvent

Reverse Sync Account Policy

CreateReverseSyncModifyAccountPolicyEvent
DeleteReverseSyncModifyAccountPolicyEvent
ModifyReverseSyncModifyAccountPolicyEvent
CreateReverseSyncNewAccountPolicyEvent
DeleteReverseSyncNewAccountPolicyEvent

Access and Provisioning Role Event

* "INSERT ENDPOINT" - represents any and all endpoint resources.

Access Role

CreateAccessRoleEvent
DeleteAccessRoleEvent
ModifyAccessRoleEvent
ViewAccessRoleEvent

Provisioning Role

ModifyProvisioningActivityEvent
ProvisioningActivityEvent
AddProvisioningRoleToProvisioningRoleEvent
Assign "INSERT ENDPOINT" * AccountTemplateToProvisioningRole
DeleteProvisioningRoleEvent
DeleteProvisioningRoleEvent
ModifyProvisioningRoleEvent
ProvisioningRolesOwnerPoliciesEvent
RemoveProvisioningRoleFromProvisioningRoleEvent
RevokeUserFromProvisioningRoleEvent
Unassign "INSERT ENDPOINT" * AccountTemplateFromProvisioningRole
ViewProvisioningRoleEvent

Endpoint Events

Account Events	Directory Events	Policy Events
Assign Category to Account	Create Endpoint	Assign category to account template
Assign Group to account	Delete Endpoint	Assign endpoint to account template
Create Account	Modify Endpoint	Assign group to account template
Delete Account	View Endpoint	Create account template
Modify Account		Delete account template
Unassign Category from Account		Modify account template
Unassign Group from Account		Unassign category from account template
View Account		Unassign endpoint from account template
		Unassign group from account template
		View account template

Management Events

Connection Events	Email Events	End Point Events
CreateConnectionEvent	CreateManagedEmailEvent	CreateEndpointEvent
DeleteConnectionEvent	DeleteManagedEmailEvent	DeleteEndpointEvent
ModifyConnectionEvent	ModifyManagedEmailEvent	ModifyEndpointEvent
		SynchEndpointAccountsEvent
		ViewEndpointEvent

FWSERVICE

DeleteServiceEvent
ModifyServiceEvent
RequestUserToService
RevokeUserFromService
ServiceChangeAdminPoliciesEvent
ServiceChangeOwnerPoliciesEvent
ModifyServiceRequestEvent
ViewEndpointEvent

IM Webservice Config

CreateWebServicesConfigurationEvent
DeleteWebServicesConfigurationEvent
ModifyWebServicesConfigurationEvent
DeleteReportInstanceEvent

Explore & Correlate

DeleteExploreAndCorrelateDefEvent
ModifyExploreAndCorrelateEvent

Audit Events

Audit Events	
BulkTaskEvent	ForgottenPasswordEvent
CleanupAuditDataEvent	GenericAuditEvent
CleanupSubmittedTasksEvent	GlobalPolicyBasedWorkflowEvent
CorrelationAttributeConfigurationTabHandler\$SaveCorrelationAttributesEvent	IdentityPolicyAuditEvent
CreateExploreAndCorrelateDefEvent	IdentityPolicyEventData
CreateProvisioningUserAuditEvent	IdentityPolicySetEventData
CreateProvisioningUserNotificationEvent	JavaActionEvent
DeleteProvisioningUserAuditEvent	ModifyDelegationEvent
DeleteRecurringTaskEvent	ModifyProvisioningUserAuditEvent
ExecuteCommandLineEvent	OptionPackMigrationEvent
ExecuteSqlUpdateEvent	ProvisioningRoleEventData
ExploreAndCorrelateEvent	ReportingInstanceEvent
ExternalTaskEmptyEvent	ReverseSyncAddToRelationshipEvent
ExternalTaskGroupEvent	ReverseSyncAssignAccountEvent
ExternalTaskOrgEvent	ReverseSyncModificationSendForApprovalEvent
ExternalTaskUserEvent	ReverseSyncNewAccountSendForApprovalEvent
ForgottenPasswordAuditEvent	ReverseSyncRemoveFromRelationshipEvent
GenericAuditEvent	RoleEventData
GlobalPolicyBasedWorkflowEvent	ScheduleRecurringTaskEvent
CreateUserEvent	SendEmailEvent
DeleteDelegationEvent	SetPrimaryObjectAuditEvent
DeleteUserEvent	SynchronizeAttributesWithAccountsEvent
DisableUserEvent	SynchronizeUserEvent
EnableUserEvent	SynchronizeUserProvisioningRolesAddAccountsEvent
	SynchronizeUserProvisioningRolesDeleteAccountsEvent

SPYLOGIX PLATFORM OVERVIEW

SpyLogix for IdentityMinder module streams or sends standardized, well-formed messages to one or more SpyLogix Platform servers for efficient and effective treatment by two major solution components:

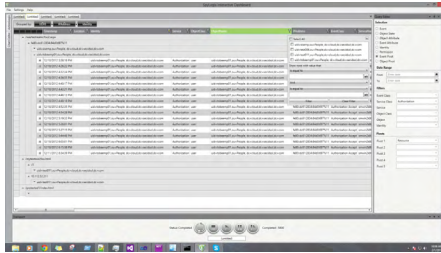
Data Management automatically pre-processes messages, stores and serves data, and

Data Actualization which provides multiple capabilities for using historic and real-time data.

Data Analysis

Data Actualization - Grid Editor

Grid Editor is designed to be intuitive for multi-source, cross-contextual analysis of stored data. For example, to easily view and analyze current activity and historic object changes. Or provide the flexibility to dynamically create views through drag and drop operations, presenting a single view of a user's session regardless of the location of activity.



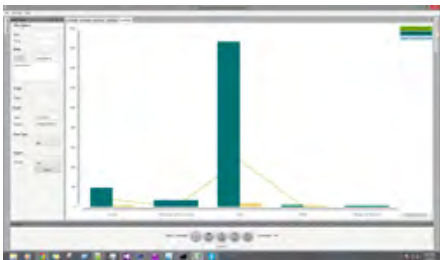
Feature Set

Multi-source enabled	Grid Analysis
Object browser	- Manage multiple views
Data query editor	- Data element change detection
- Granular selection	- Row drill-down for details
- Pivot row/column selection	- Dynamically pivot Group Sort Filter
- Run or run/refresh continuously	- Dynamically search on all data elements
	- Save favorite views

Data Visualized

Data Actualization - Chart Editor

Chart Editor is designed with maximum flexibility providing capabilities for charting any numeric or non-numeric data. Plots with millions of historical data points may be simultaneously refreshed in real-time to create operational dashboards or historical data trending.



Feature Set

Granular data selection	Multi-source charting
Historical or streaming	Flexible data filter options
Plots millions of data points	Multiple chart selection
Numeric or non-numeric	Docking charts
Dynamic dra-able scales	Save favorite charts

ActionLogix

Data Actualization - Policy Based Analysis

ActionLogix analyzes streaming messages in real-time using graphically configured policies. Selectable actions include configurable alerts and pluggable actions. All message data is filterable using flexible state data, such as static and dynamic thresholds, within limits or Boolean logic. Events may be synthesized and saved based on streaming data. Messages may be filtered and forwarded to other SpyLogix Platform servers or IT services for closed-loop integration.



Feature Set

Intelligent Alerts & Notifications	Event/Message Synthesis
- Policy Builder	- Build events for specific condition/result
- Easy to use workflow interface	Message Forwarder
- Real-time streaming analysis of incoming data	- Forward any message to any SpyLogix Platform or Dashboard
- Granular data filtering	Invoke automated actions such as scripts, widgets and applications
- All data elements actionable	
- Send via Email, RSS, Other	

Data Sharing

Data Actualization - Repurpose Data

A web service enables easy access and quick sharing of stored data with existing tools or IT services.

Stored data may also be shared interactively:

- By exporting viewed data to popular formats
 - PDF, HTML, Excel, CSV, Word, etc.
- Using existing Odata-enabled BI tools
 - CA, SAP, Excel Powerpivot and others
- Web Services (data out)
 - Restful Style Interface

SUMMARY

SpyLogix for IdentityMinder organizes and leverages the rich

event and task data produced by CA IdentityMinder granularly and in context. It enables data analysis IdentityMinder and other sources such as CA SiteMinder or CA Directory.

Efficient continuous monitoring facilitates new visibility into IdentityMinder operations and simplifies ongoing support for effective enterprise identity and access management (IAM).