

ADPRO IntrusionTrace™ Application License

For ADPRO® FastTrace™ 2/2X

Video Analytic Algorithm for Intelligent Perimeter Detection

Description

The ADPRO® IntrusionTrace™ application provides high performance intrusion detection using video analytics specifically designed for 24/7 outdoor operation. Optimised using footage from thousands of hours of video covering a range of environmental, seasonal and time of day variations, the analytics achieve low false alarm rates while maintaining high detection probability and reliability. With simple "region of interest" configuration for the majority of scenes, and advanced parameters for the more challenging scenarios, IntrusionTrace can be adapted to a wide range of applications. Whether you wish to monitor your yard area, provide remote access control to a site, or set up a virtual fence around your supply depot, IntrusionTrace is designed for you. Supporting all 16 channels on the ADPRO® FastTrace™ 2X or up to 4 channels on the ADPRO® FastTrace™ 2 platform, IntrusionTrace complements the powerful recording, transmission, and alarm handling capabilities of these platforms. With the ability to transmit alarm images to a remote central monitoring station, IntrusionTrace increases the effectiveness of off-site monitoring. Now you have the option of having your site security efficiently managed by experienced security personnel.

Specifications

- 24/7 outdoor algorithm for perimeter and sterile zone applications
- Up to 16 channels per FastTrace 2X unit (4 channels per FastTrace2 unit)
- 16 zones/directional trigger lines can be defined per channel
- PTZ presets can be triggered on detection
- Integrates advanced algorithms to maximize target detection and tracking
- Can detect running, crawling, rolling and slow moving targets
- Camera tamper detection is integrated into FastTrace 2/2X
- Fully integrated solution and uniform GUI for analogue and IP cameras
- Support for Thermal cameras

Application Portal



The Xtralis Web based Application License Portal enables efficient creation and management of ADPRO FastTrace 2/2X application licenses.

- Efficiently create and dynamically manage FastTrace 2/2X Application licenses (Redeem, Revoke).
- Allows the installer/CMS to remotely install new application licenses.
- Immediately service customers in case of a technical issue. No waiting time.

IntrusionTrace license models



Perpetual License Model

- Oriented to installations with indefinite application period
- Has no expiration date
- Active on one unit at a time
- Can be revoked an unlimited number of times
- Can be transferred for customer service



Timed License Model

- Oriented to installations with timed contracts (leasing models)
- Operational expenditure versus capital expenditure
- Has an expiration date
- Active on one unit at a time
- Can be revoked an unlimited number of times
- Can be transferred for customer service
- Includes 30 days of grace period for renewal



ADPRO FastTrace 2/2X - IntrusionTrace

Unique Features

- High detection probability
- 24/7 outdoor operation
- One-person setup
- Simple region of interest detection
- Powerful advanced parameters
- Up to 16 zones or directional trigger lines per channel
- Cost efficient installation (3-in-1 record, transmit, video analytics)
- Sterile zone application focus
- Fast installation and commissioning
- Software only add-on (licensed)
- 3D-calibration, no learning time
- Support for IP and analogue cameras
- Flexible licensing system (download and remote provisioning)
- Remote servicing (immediately)
- i-LIDS® approved primary detection system for operational alert use in sterile zone monitoring applications
- i-LIDS® approved event based recording system for sterile zone monitoring applications
- Support for Thermal cameras
- Car Headlight suppression



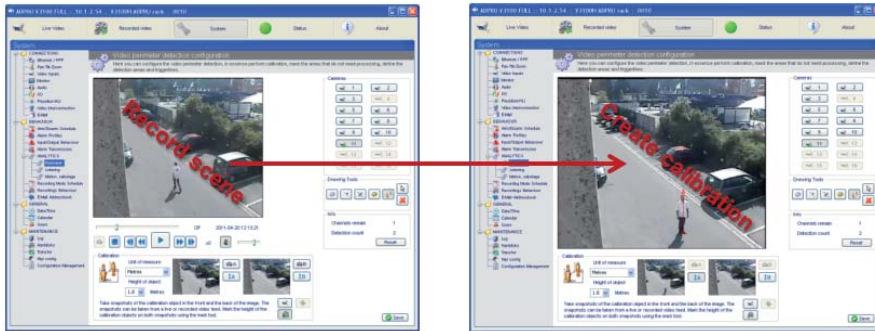
Imagery Library for Intelligent Detection Systems

Sterile Zone Monitoring
2013 Evaluation
Xtralis
IntrusionTrace
Version 1.14

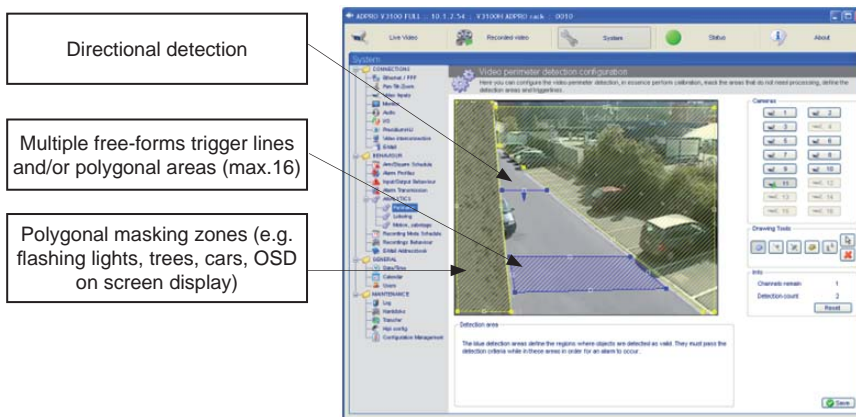


Quick and Easy IntrusionTrace Setup

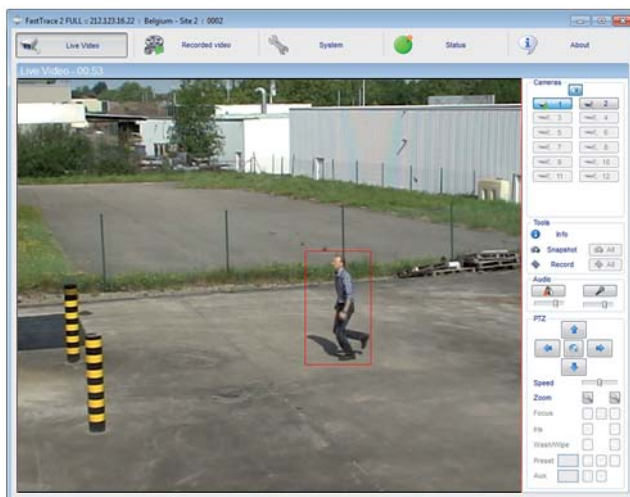
- Integrated configuration tool in the FastTrace 2/2X client software



- Use of recorded images for the 3D-calibration (one-person setup)
- No learning time



- Analytic bounding boxes available on live, recorded and exported images:
 - Directly visible after settings are configured and saved
 - Bounding boxes info as metadata, not flattened in the image



The IntrusionTrace application can be combined with other available Xtralis FastTrace 2/2X video content analytic applications (IntrusionTrace PLUS, LoiterTrace, ...) in any combination related to all 16 channels of a FastTrace 2X or to max. 4 channels of a FastTrace 2.

www.xtralis.com

UK and Europe +44 1442 242 330 D-A-CH +49 431 23284 1 The Americas +1 781 740 2223

Middle East +962 6 588 5622 Asia +86 21 5240 0077 Australia and New Zealand +61 3 9936 7000

The contents of this document are provided on an "as is" basis. No representation or warranty (either express or implied) is made as to the completeness, accuracy or reliability of the contents of this document. The manufacturer reserves the right to change designs or specifications without obligation and without further notice. Except as otherwise provided, all warranties, express or implied, including without limitation any implied warranties of merchantability and fitness for a particular purpose are expressly excluded.

Xtralis, Xtralis logo, The Sooner You Know, VESDA, ICAM, ECO, OSID, HeiTel, ADPRO, IntrusionTrace, and LoiterTrace are trademarks and/or registered trademarks of Xtralis and/or its subsidiaries in the United States and/or other countries. Other brand names mentioned herein are for identification purposes only and may be trademarks of their respective holder(s). Your use of this document does not constitute or create a licence or any other right to use the name and/or trademark and/or label. This document is subject to copyright owned by Xtralis. You agree not to copy, communicate to the public, adapt, distribute, transfer, sell, modify or publish any contents of this document without the express prior written consent of Xtralis.

Doc. no. 21802_06



ADPRO FastTrace 2/2X - IntrusionTrace

Thermal Camera Support



Car Headlight Suppression



Typical Detection Scenes

