

Sumitomo-Hansen's P4 UniMiner Drive is a good fit with West River Conveyors

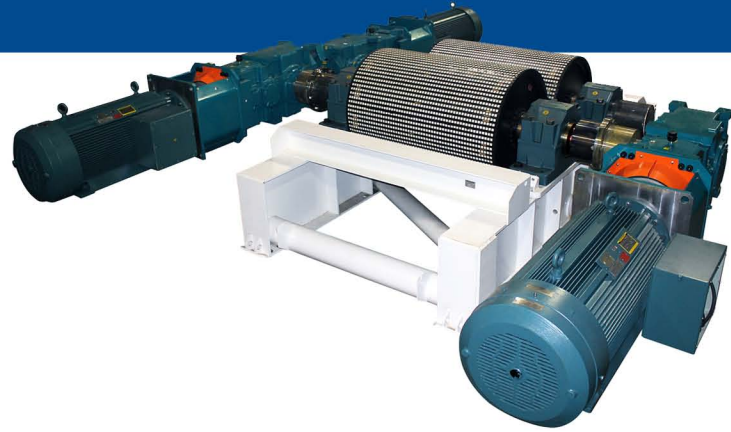
West River Conveyors & Machinery Company is a leader in custom-built, custom-designed belt drives for coal and potash applications, and is one of Sumitomo-Hansen's largest P4 UniMiner drive consumer.

Sumitomo-Hansen's P4 UniMiner drives are used on many of West River's belt drives based on the flexibility and high customer satisfaction of the products. Customers find benefit in the universal and flippable mounting features of the P4 UniMiner, eliminating the need to buy reducers specifically oriented for each installation. This is a great advantage to users wanting to purchase spares for future changeouts where one reducer covers all orientations.

"The design layouts and features of the UniMiner Drive work well with our application", states Jerry Roulett, President of West River. "The selection of sizes and offerings available per HP and RPM for the Hansen P4 UniMiner Drives fit the needs of West River's applications perfectly. "We have had great customer acceptance with the P4 UniMiner. Customers who have installed our drives in their operations will speak highly about the quality of the reducers. We've been using Hansen UniMiners on our belt drives for over a decade now."

The application image shown below was exhibited by West River at the 2013 Bluefield Coal Show. This particular dual 300HP Alignment-Free Belt Drive was eventually sold to a coal mine in Indiana utilizing two P4 UniMiner MHRF-CLN-22.4 reducers.

The image to the bottom-right is West River's back-mount drive application used in a potash mine in New Mexico. This Alignment-Free 54" Dual 300HP VFD rated back-mount drive is a roof mounted design with Sumitomo-Hansen's ZHRH3-CLN/CRN-25.



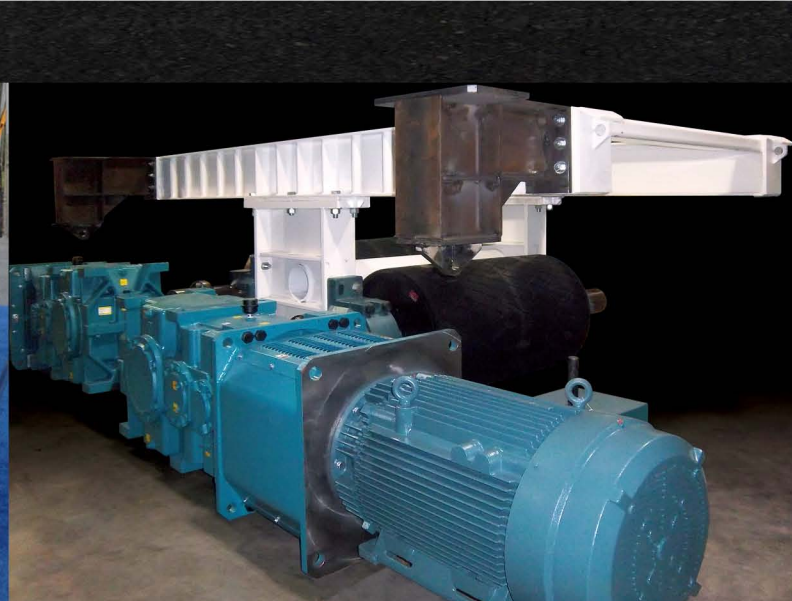
The image shown above is a triple 500HP Alignment-Free VFD Belt Drive that was shipped to a coal mine in West Virginia utilizing the ZHRH3-CRN/CLN-28, UniMiner Drives with high speed shaft fan and motor lantern for T10 coupling.

West River's Purchasing agents especially like the working relationship they have with Sumitomo-Hansen.

"Sumitomo-Hansen's ability to service West River is exceptional. Our Sales Manager makes regular visits to our shop and is excellent to work with. The factory works directly with our Purchasing Manager to meet our deadlines even when the deadlines seems very tight. Most of all, the quality products produced by Sumitomo-Hansen coupled with excellent customer service make it easier for us to continue to use Sumitomo-Hansen products on our belt drives."

- Tina Clevinger, Purchasing

Sumitomo-Hansen strives to meet the unique requirements for bulk material handling and mining applications in order to position our customers as industry leaders.



www.WestRiverConveyors.com