

## Pinner Series

### ARC RESISTANT CHARGING BARS

Part of the Chargemaster Electrostatic Generating System, the Pinner bars are available in 3 varieties. These bars are energized with our Charging generators to deliver a safe charge to temporarily pin or bond materials together. Quality construction and engineered for performance, the Pinner Series will help you achieve your Electrostatic Pinning goals whether working with IML, lamination, card tacking or edge pinning.

- Super-rugged design for Industrial Environments
- Resistively coupled for operator safety and reduced EMI emissions
- High output for outstanding pinning performance
- Part of the Innovative Chargemaster System, for demanding Industrial applications

## Specifications

<b>Input Voltage</b>	±30 kVDC (±50 kVDC with special mounting and insulation precautions)
<b>Output Current</b>	1.5 mA/ft max
<b>Operating Environment</b>	Temperature 32-200°F (0-90°C); humidity 70% RH Max, no dewing permissible
<b>Operating Distance</b>	1/2" to 3" (application & voltage dependant)
<b>Weight</b>	2.1 lb/foot
<b>Casing Material</b>	Glass filled vinylester (rugged, impact resistant, light grey color)
<b>High Voltage Cable</b>	Flexible, abrasion-resistant, silicone outer jacket rated to ±50 kV

Our resistively coupled Pinner bars have super-rugged construction and are designed with maximum insulation for powerful performance and long life. Approximately 50 standard lengths available, and all bars come standard with 10 feet of cable. Also available with a right angle configuration. Rated for use in temperatures up to 200°F.

**Pinner:** Stainless steel emitters, 6 per inch.

**Pinner-T:** Tungsten emitter pins for longer life and less maintenance, high output pinning performance, 3 per inch.

**Pinner-R:** Remove stainless steel emitter pins for longer life, 5 per inch.

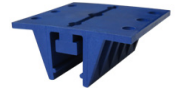
## Mounting

All bars feature 2 new styles of mounting brackets. Both brackets are built for durability and can utilize metal bolts.

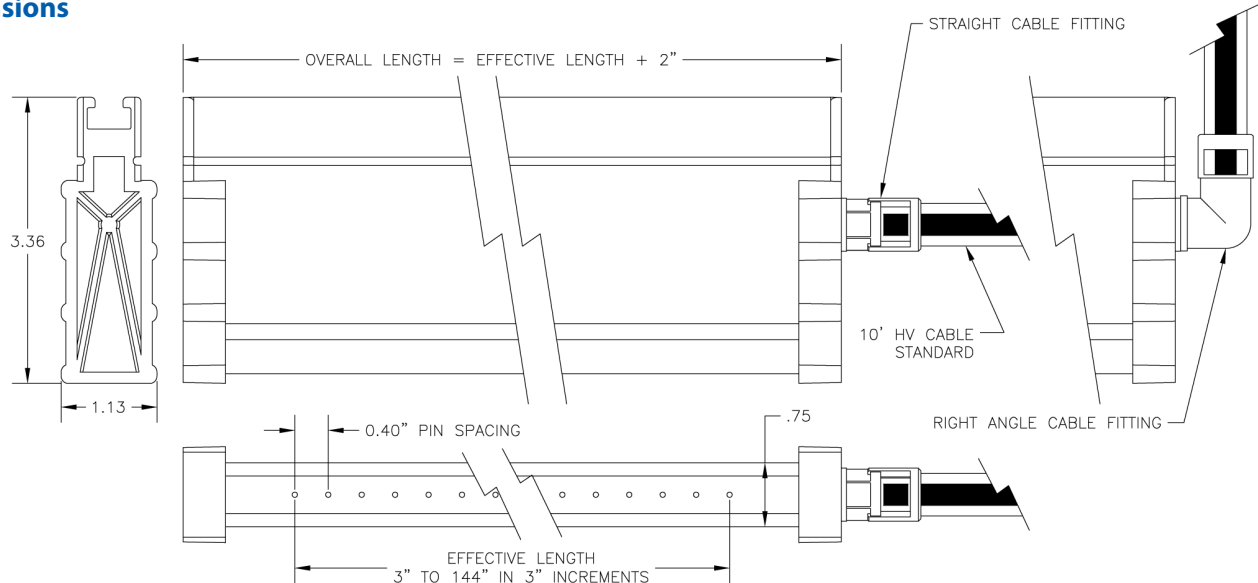
Our **multi-function bracket** is designed for maximum versatility, to either mount from the top or side, recommended for dirty environments and more challenging applications.



Or use our **low profile bracket** to maximize space and recommended for well-maintained environments and up to 30 kV.



## Dimensions



**SIMCO ION**<sup>TM</sup>  
An ITW Company

P/N 5201225  
© 2013 Simco-Ion – All rights reserved.  
Specifications are subject to change without notice.

**Simco-Ion**

2257 North Penn Road  
Hatfield, PA 19440-1998  
Tel: 800.203.3419 (in USA)  
Tel: 215.822.6401

customerservice@simco-ion.com  
www.simco-ion.com