

# Tilt Shift Generator for Windows\* 8.1 Solutions Brief



Solutions Brief  
[Intel® Developer Zone](#)

## Enabled by Intel® Atom™ Tablets for Windows\* 8.1

Tilt-shift photography is a fun and creative photo effect that can make a life-size object or place look like a miniature model, among other things.

While achieving tilt-shift photo effects often previously entailed using an expensive, professional tilt-shift photographic lens, now the Tilt Shift Generator from Artensoft provides an easy way to achieve these professional-style photo effects. Featured on Intel® Atom™ Tablets for Windows\* 8.1, it produces photographs with convincing tilt-shift photo effects, yet at a fraction of the cost of purchasing a glass and metal-based tilt-shift lens.

While the Tilt Shift Generator doesn't tilt or shift the actual camera lens in Windows\* 8.1 tablets, it recreates the effect through software. The outcome is pictures that are as good, if not better than using an actual tilt-shift camera lens. Actual tilt-shift lenses limit the convenience of modern autofocus cameras, since they sacrifice the autofocus and automatic aperture control. This can not only be inconvenient, but it can significantly slow down the process of taking pictures.



# A New Twist on Tilt-Shift Photography

When developing the Tilt Shift Generator, the developers at Artensoft created a creative photographic app designed for the unique capabilities of new Intel Atom tablets for Windows\* 8.1. As a member of the Intel® Developer Zone, Artensoft accessed Intel tools, code and support that helped them optimize this app to work in conjunction with the powerful camera, high-resolution touch screen and powerful Intel® Atom™ processor of Windows\* 8.1 tablets.

The Tilt Shift Generator achieves the unique tilt-shift effect through a special algorithm that blurs specific areas of the image by the right amount. It also provides numerous control options and settings that allows the photographer to control the effects of the picture - something an actual tilt-shift lens doesn't achieve. Tilt Shift Generator enables users to produce multiple versions of the same images in order to create the greatest angle, while keeping the undistorted original. The control options include:

## Focus position

Users can select the front and back focus and defocus options in order to decide what areas to leave blurred and which ones should remain clear.

## Bokeh boost and type

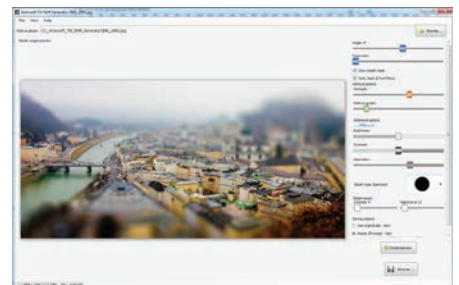
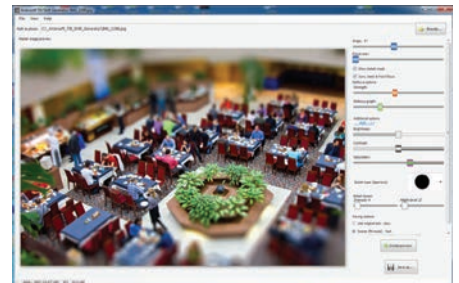
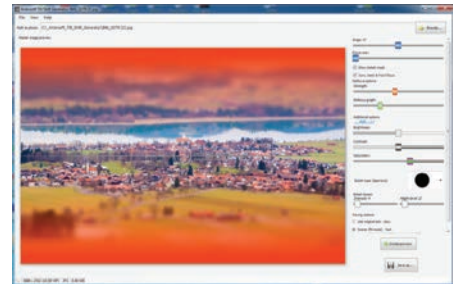
Bokeh is the aesthetic quality of the blur in the out-of-focus areas of an image. Tilt Shift Generator allows users to control the amount of blur in certain areas of the photograph to achieve a highly stylized picture. Bokeh is typically used to enhance small background highlights like reflections and light sources

## Focus size

This enables the user to control the area of the picture where focus occurs. Since the tilt-shift effect typically only has a select area in focus to create the illusion of a miniature scene, the focus size feature allows users to customize and define the image area better.

## Bokeh strength

Adjust the strength of the blur in the areas of the photograph that are out of focus. This can help create very creative images of light that can greatly enhance the photograph.





## Tilt Shift Generator

Powered by Intel Windows\* 8.1 tablets with an Intel Atom processor provide a fun and powerful platform to take high-quality, stylistic photographs with the Tilt Shift Generator by Artensoft. The Intel Atom processor, high-resolution display and interactive touch capabilities make new Windows\* 8.1 tablets a creative and enjoyable platform to create customized photography.



To become an Intel® Software Partner visit  
[www.intel.com/partner](http://www.intel.com/partner)

For more information visit  
[www.tiltshiftgenerator.com](http://www.tiltshiftgenerator.com)

