

Konect Elite on HP Public Cloud

(v13.5)

10 Step Deployment Guide

(Konect Elite VM Image Instance)

This Deployment Guide will walk you through the 10 simple steps to getting a Konect Elite VM Image Instance up and running very quickly and very easily.

For a successful install, please be sure to follow each step precisely and in order.

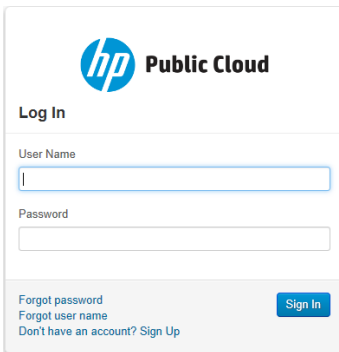
KONECT ELITE BENEFITS:

[Konect Elite™ v8.6.2](#) provides a single pane dashboard from which administrators can securely deliver hosted session-based desktops, RDS-enabled applications, and files/folders to any user, over any network, on virtually any device, including Mac OS X, iOS, Android, and many other tablets and mobile devices (in addition to any Microsoft XP/Win7/Win8/Win8.1/ARM desktops/tablets).

[Konect + HP Cloud](#) solutions give SMBs a new option to easily create a fully functioning Public Cloud infrastructure to enable new mobile workstyles. Konect's seamless publishing capabilities, when combined with very low upfront and ongoing costs the Public Cloud, means that SMBs can get up and running very quickly without needing a massive budget, and can grow with the solution at a pace that makes sense for their business.

Let's begin!

1. Login to your HP Public Cloud Horizon 13.5 Console
<https://horizon.hpcloud.com>



The login form features the HP Public Cloud logo at the top. Below it, the text "Log In" is displayed. There are two input fields: "User Name" and "Password". A "Sign In" button is located to the right of the password field. At the bottom left, there are three links: "Forgot password", "Forgot user name", and "Don't have an account? Sign Up".

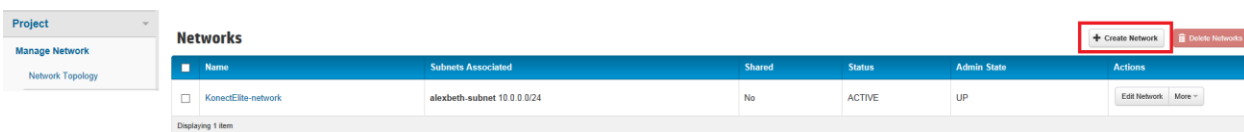
2. You will need to **activate a Region** that you can then **Manage**.



The interface shows the "Project/Region Scope" section on the left with a dropdown menu currently set to "US West". The main area displays the "US West" region details. A table lists services with columns for Service, Region, Version, Status, and Actions. The "Compute" service is listed with a status of "Activated", which is highlighted with a red box. A "+ Activate Services" button is visible in the top right corner.

Service	Region	Version	Status	Actions
Compute	US West	v13.5	Activated	Compute Instances More ▾

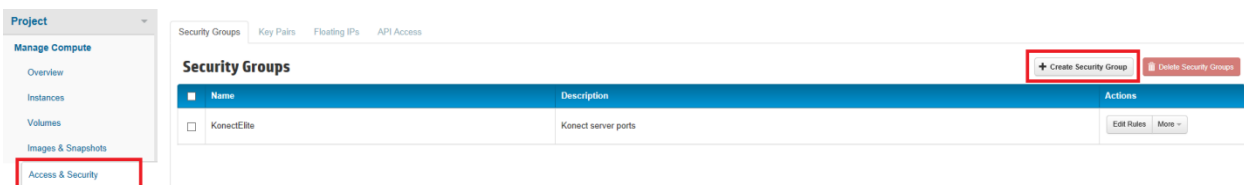
3. Create a network topology. *This is required for creating an instance.*



The interface shows the "Project" section on the left with a dropdown menu set to "Manage Network". The main area displays the "Networks" section. A table lists networks with columns for Name, Subnets Associated, Shared, Status, Admin State, and Actions. The "KonecElite-network" is listed with a status of "ACTIVE", which is highlighted with a red box. A "+ Create Network" button is visible in the top right corner.

Name	Subnets Associated	Shared	Status	Admin State	Actions
KonecElite-network	alexbeth-subnet 10.0.0.0/24	No	ACTIVE	UP	Edit Network More ▾

4. Create a security group. *This is required when creating an instance.*



The interface shows the "Project" section on the left with a dropdown menu set to "Manage Compute". The main area displays the "Security Groups" section. A table lists security groups with columns for Name, Description, and Actions. The "KonecElite" security group is listed with a description of "Konec server ports", which is highlighted with a red box. A "+ Create Security Group" button is visible in the top right corner.

Name	Description	Actions
KonecElite	Konec server ports	Edit Rules More ▾

4. Create a security group. – *continued...*

Add the following four (4) ports.

IP Protocol	Port Range
TCP	3389 (RDP)
TCP	443 (HTTPS)
TCP	80 (HTTP)
UDP	3391

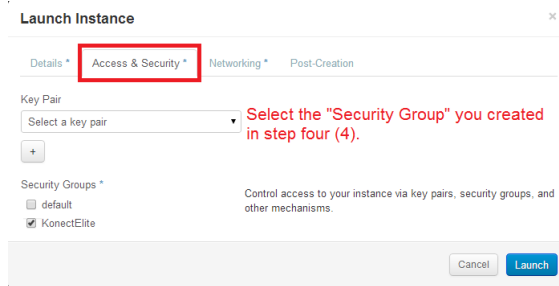
Direction	Ether Type	IP Protocol	Port Range	Remote	Actions
<input type="checkbox"/> Ingress	IPv4	TCP	443 (HTTPS)	0.0.0.0 (CIDR)	Delete Rule
<input type="checkbox"/> Ingress	IPv4	UDP	3391	0.0.0.0 (CIDR)	Delete Rule
<input type="checkbox"/> Ingress	IPv4	TCP	80 (HTTP)	0.0.0.0 (CIDR)	Delete Rule
<input type="checkbox"/> Ingress	IPv4	TCP	3389 (RDP)	0.0.0.0 (CIDR)	Delete Rule

5. Select **Launch Instance** in order to create a Server VM.

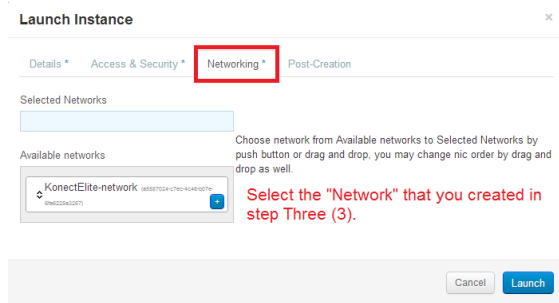
Details:

- I. First select “Boot from image” from the “Instance Boot Source” pull-down list.
- II. Second, select “desktopsites Konect Elite Ver. 8.6.2.100” in the “Partner Images – Windows” section from the “Image Name” pull-down list. Complete required details info.

III. Select the "Security Group" you created in Step Four (4).



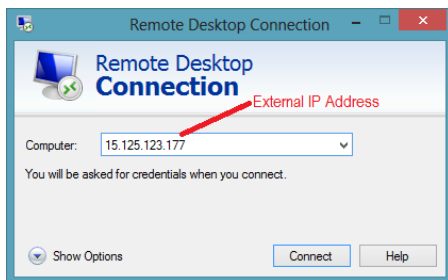
IV. Select the "Network" you created in Step Three (3).



6. Associate a Floating IP to the Konec Server instance.



7. Launch Remote Desktop Connection and use the External IP Address (Floating IP) for the Konec Server instance.



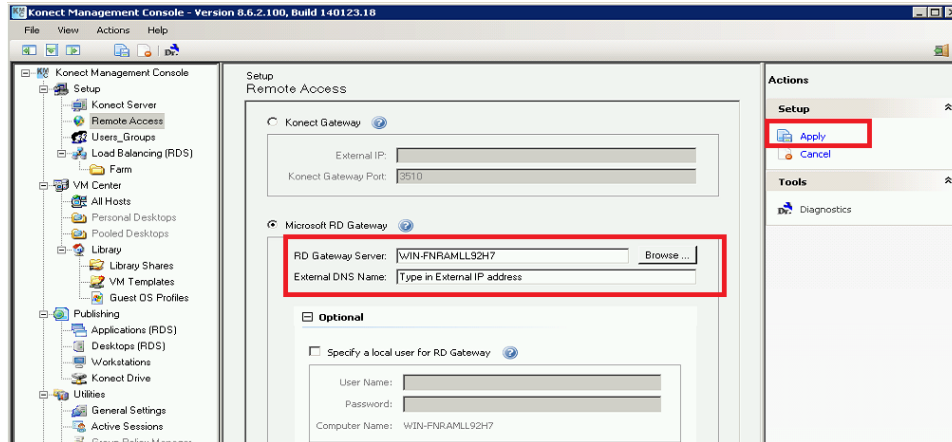
Use the following credentials:

Username: Administrator

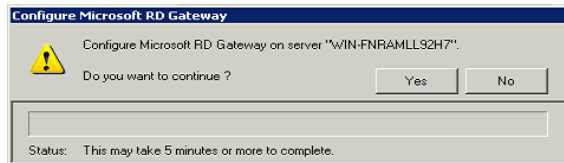
Password: P@ssw0rd

8. Launch the Konect Management Console (KMC) . Configure the “Remote Access” feature in the “KMC -> Setup -> Remote Access” section.

- I. Select “Browse” and add the RD Gateway server.
- II. Then type in the External IP address.




- III. Select “Apply” (the following pop-up will appear). Select “Yes”. When completed successfully, close dialog box.



9. **The Konect Client** (for access from Windows desktops XP+)

To download the Konect Client, launch a web browser and type in [http:// “External IP Address”](http://External IP Address). Click the “Install Software” button to download and install the Konect Client.

The following icon  should appear on your desktop.



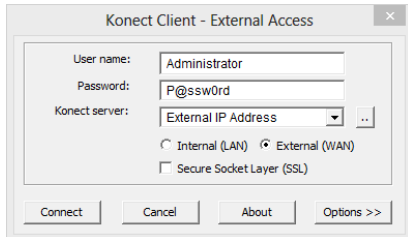
9. The Konect Client – *continued...*

Double click the “Konect Client” icon  and type in the following credentials:

Username: Administrator

Password: P@ssw0rd

Konect Server: “External IP Address”



[More Info...](#)

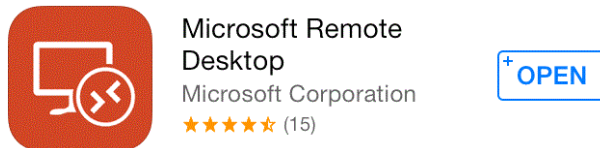
Published resource icons should appear on your desktop (**Notepad** & **Word** already published).


In addition, a “**Konect Drive (K:)**” is dynamically mapped in your file explorer.

When you launch an application, a SSL self-signed certificate will appear. Select OK to launch app.

10. Konect Mobile™ (for access from Mac OS X, iOS, Android, and other mobile devices/tablets)

Download the Microsoft Remote Desktop app from the device’s respective “AppStore”.



Click on the orange icon  on your tablet device. Select “**Remote Resources**” and type in the following required fields.

Server URL

URL: https://External IP Address/Konectrdweb/webfeed.aspx

User name & password

Workgroup/Standalone:

User name: Administrator

Password: P@ssw0rd

Published resource icons should appear on your desktop (**Notepad** & **Word** already published).

When you launch an application, a SSL self-signed certificate will appear.

Select “Connect Always” to launch app.

Now you are ready to begin publishing resources out to users!

Additional Resources: [Online Help Docs / Videos](#)

dts Website: www.desktopsites.com

HP Cloud Website: www.hpcloud.com

Konect Elite Partner Page: <https://marketplace.hpcloud.com/konect-elite>

Licensing

The Konect Access Licenses ('KALs') are purchased on a subscription-based service license model linked to an expiry date that is managed by desktopsites, Inc. on a **per annum basis**.

[Learn More...](#)

Support

Support for the Konect Elite server software in this image is provided by desktopsites, Inc. HP Public Cloud provides support for the infrastructure and external management.

SUPPORT RESOURCES:

[Konect Elite – Associated Software Documentation & Guides](#)

[Konect Elite – Free Online Support Resources & Tools](#)

[desktopsites – Advanced Live Technical Support](#)

Contact desktopsites, Inc.

Direct: +1 (403) 538-0105

Toll Free: +1 (866) 280-8292

Fax: +1 (403) 735-6351

Email: support@desktopsites.com

Business Hours: Mon-Fri; 9am – 5pm MST excluding holidays

