

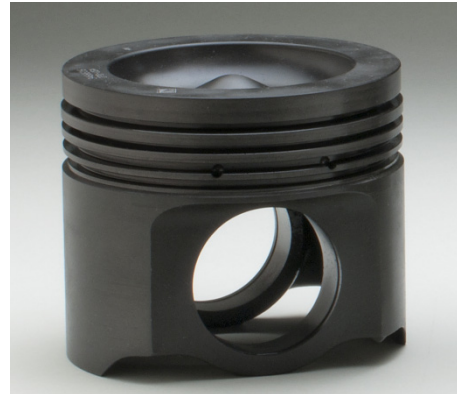


23231 Normandie Ave. ♦ Torrance, CA 90501 USA
+1.310.530.1900 Corporate ♦ +1.301.530.2708 Fax

FOR IMMEDIATE RELEASE

New IPDSteel™ Friction Welded Piston Now Available

Torrance, California (May 1, 2014) – IPD, a leading aftermarket provider of engine components for heavy-duty diesel and natural gas powered engines, is proud to announce a new IPD piston design (patent pending) for the aftermarket. This new **IPDSteel** piston utilizes precision friction welding to create a high quality aftermarket alternative to similar designs from **original equipment (OE) manufacturers**. This new design is the third generation of patented and patent-pending **IPDSteel** pistons, providing customers worldwide with a high quality and cost effective alternative to OE parts.



Heavy-duty piston designs have evolved over the past many years as a result of increasing cylinder pressure specifications. Early model engine pistons were predominantly one piece aluminum designs, which later evolved into two piece articulated designs with steel crowns and aluminum skirts. Ever increasing cylinder pressures led to 1 piece steel pistons, and eventually to more recent friction welded designs.

IPDSteel designs features precision manufactured and machined high strength alloys for durability and quality. With this design, a precision friction welding process unifies the piston crown and skirt with integral pin bosses, creating a box structure design with integrated oil cavity for improved piston crown cooling, as well as enhanced strength in the ring land area.

As with all **IPDSteel** pistons, IPD's approach utilizes engineering and manufacturing expertise to create innovative piston designs that are interchangeable with similar OE designs. IPD innovations include patent pending design ideas such as special manufacturing operations to

The Standard for Quality, Innovation, Service and Support Since 1955
IPD is ISO9001:2008 Certified by Lloyds Register®

www.ipdparts.com

reduce dimensional variation, and still utilize industry design standards for key features such as ring grooves. IPD also adds specially engineered coatings (as found on similar OE components) to reduce friction and provide proper break-in characteristics.

IPD continues to develop innovative piston designs via advanced engineering and manufacturing processes in order to provide customers with a choice. “This exclusive piston design enables IPD to continue to offer our customers a service replacement alternative for newer model engines that require a welded steel piston design,” notes Jaime Fiffles, IPD’s Sr. Director of Sales and Service in the Americas. “From our exclusive **IPDSteel** pistons, to our popular **IPDStyle** Crevice Seal liners and Gasket Kits, IPD continues to offer innovative service parts replacement solutions that are cost effective and of the highest quality. IPD’s customers are servicing engines within a wide range of increasingly complex markets, and their demand for high quality, reliable, and cost effective engine service solutions continues to drive IPD to innovate.”

IPD is in the process of launching a variety of new **IPDSteel** Welded Piston designs into the marketplace, with initial applications for selected Caterpillar® C-series engines (C7, C13, C15, C18 & C27).

For information on IPD and updated news on new product launches, please visit www.ipdparts.com. IPD can also be reached via email at sales@ipdparts.com.

###

Contact

Egan Hernandez
IPD Marketing & Communications
(310) 602-5317
ehernandez@ipdparts.com

About IPD

Since 1955, IPD has focused on helping equipment owners save money without risk to reliability. IPD continues to build on over 55 years of manufacturing experience with Quality Products, Technical Innovation, and Superior Customer Service and Support. IPD's product line includes diesel and natural gas replacement engine parts for Caterpillar®, Cummins®, Detroit Diesel® and Waukesha® engine applications.

All manufacturers' names, numbers, symbols and descriptions are for reference only. It is not implied that any part is the product of the manufacturer. Caterpillar®, Cummins®, Detroit Diesel®, and Waukesha® are registered trademarks of their respective owners.

The United States Patent and Trademark Office (USPTO) is the Federal agency for granting U.S. patents and registering trademarks. The USPTO is an Agency of the Department of Commerce.