



ALLIED

ENVIRONMENTAL SERVICES, INC.



- Founded in 1987, Allied has become a recognized and trusted provider of comprehensive environmental and industrial maintenance services. With a diverse staff of experienced professionals, and an expansive equipment fleet, Allied provides cost-effective and comprehensive solutions to wide-ranging environmental issues from investigation and assessment, to remediation and restoration.

By staying abreast of the constant changes in environmental and safety regulations, and improvements in technology and methodology, Allied is able to provide efficient, responsive, and innovative solutions for the diverse needs of our clients.



- **Commitment to Safety**

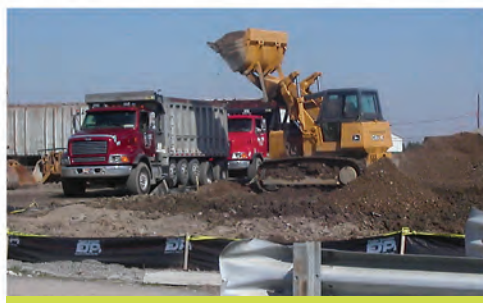
Allied understands that safe work practices are the key to a successful project and a successful company. Further, we know the benefit of cost savings and reduced liability that our safe work practices provide our clients. Allied crews have accumulated more than 1,300,000 hours worked without a lost-time accident/injury. Our dedication to safety has earned our firm numerous awards and accolades from local and state agencies and trade organizations.

Allied is an ISNetwork and
PEC Premier approved
contractor.





Emergency Spill Response



■ Emergency Spill Response

Allied's experienced and OSHA HAZWOPER-trained spill response team is ready 24 hours per day, 365 days per year to respond immediately to spills/releases of hazardous materials, mercury and petroleum.

Allied's 24-hour emergency call line (1-800-992-5781) is manned by a live operator, to ensure that response actions are set in motion the moment a call for help is received.

- 24-hour emergency hotline (1-800-992-5781) -

Our response equipment, including vac trucks, absorbent pads and booms, skimmers, neutralization materials, HEPA dry vacs, overpacking materials, and pressure washing units are maintained in a state of constant preparedness.

Whether a release occurs along the roadside, within a stream, at an industrial facility or on residential property, Allied responds quickly to minimize property damage and protect occupants.

- Contain and control the spill
- Recover and transport materials for proper disposal
- Conduct post-spill site assessment and restoration

Allied technicians are confined space entry and IDLH stand-by rescue certified.





Industrial Cleaning & Maintenance



■ Industrial Cleaning Services

From compact job-shop machining facilities to global manufacturers and petroleum refineries, Allied provides our industrial clients with wet and dry cleaning services, hazardous materials management, waste transport and disposal, and vessel/equipment maintenance. Coupled with an experienced staff of operators and technicians, Allied maintains a comprehensive fleet of equipment capable of responding to the diverse needs of industry.

- **Storage Tank Cleaning:** Removal and transport of product (liquids, sludges, solids) and power washing/cleaning the tank interior.
- **Sewer Jetting/Cleaning:** Using high-volume water jets to force debris from pipes and clean the interior surface of the pipeline.
- **Dust/Dry Removal:** Allied uses a variety of proven methods to remove carbon black particulate, metallic dust, fly ash, or other dust accumulation from facility surfaces and equipment.
- **Surface Blasting:** High-pressure water, abrasives, semi-abrasives (sponge) or dry-ice (cryogenics) used to effectively remove surface contaminants from interior and exterior surfaces. All contaminants and spent media can be contained and transported offsite.
 - **Sand Induction Cleaning:** Adding sand/grit to a high pressure water stream to scour surfaces and remove contaminants.
 - **Heat Exchanger Cleaning:** Allied cleans condensers and fan units to restore equipment to maximum operating efficiency.
 - **Remote Video Camera:** Allied's remote camera unit is used to investigate blockages, collapses or leaks inside piping and vessels. The investigation can be viewed in realtime and recorded for future reference.





■ Hydro-excavating & Air-knifing

Hydro-excavating refers to using a combination of pressurized water and power vacuum to excavate soils/fill around sensitive equipment or in areas inaccessible to mechanical excavating equipment. Excavated spoils are contained and can be easily transported offsite for proper disposal/treatment, or returned to the excavation.

Air-knifing is a method of excavation similar to hydro-excavation, using compressed air to loosen soil/fill, which is then removed by power vacuum.



Our Equipment Fleet

Allied continually upgrades our equipment and methods to meet the evolving needs of industry.

- Vac-Con 312HLA (vacuum truck): Used for hydro-excavating, liquid/sludge/solid removal, sewer rodding.
- King Vac and Guzzler Vac (vacuum trucks): Used for hydro-excavating, liquid/sludge/solid removal.
- Vacuum Trucks with Stainless Steel Tanks: Used for haz and non-haz liquid/sludge removal and waste transport.
- Mini Vac (vacuum truck): Indoor & outdoor uses.
- Semi-Tanker Trailers: 6,000 and 9,000 gallon capacity.
- Sewer Jetter: Flexible high-volume water blasting unit capable of traveling inside 500 feet of piping.
- Water Blasting/Washer Units: High-pressure units from 10k to 20k psi effective in cleaning sewers, drains, sump pits, trenches and tanks, as well as removing surface contaminants such as lead-based paint, oils and industrial coatings.
- Hot & Cold Power Washers: 1,500 to 4,500 psi pressure washers ideal for removing petroleum film from storage tank interiors, and countless other cleaning operations.
- Cryogenic Blasting Unit: Dry-ice (CO₂) blasting unit; for applications requiring minimal residue.
- Roll-off Boxes and Trailers: Used for transporting soil, sludges and solid waste materials.



Hazardous Materials Management



■ Hazardous Materials/Waste Management

Allied's hazardous waste management services provide an economical, efficient, and flexible means of managing hazardous and non-hazardous wastes/materials. Allied specialists are expert in identifying and categorizing unused, obsolete, or unknown chemicals. To reduce disposal cost and client liability, Allied is dedicated to waste minimization, consolidation, neutralization and recycling whenever possible.

Waste management services include:

- Waste characterization/classification/sampling
- Lab packing and disposal of laboratory chemicals
- Transport, recycling and/or disposal of:
 - RCRA listed wastes
 - Photographic and x-ray developing solutions
 - PCB-containing fluids and devices
 - Mercury-containing devices
 - Shock-sensitive materials
 - Pressurized cylinders
- Management of universal wastes and electronic wastes

To provide responsive, flexible and cost-effective service, Allied has developed close working relationships with several reputable and EPA certified waste disposal & treatment facilities. Allied performs regular on-site audits of all facilities receiving the waste we manage.





■ Universal Waste & Mercury

“Universal Wastes” are a specific category of hazardous waste streams that can be managed in an alternative manner to the standard and more stringent RCRA hazardous waste requirements. The Universal Waste Rules are intended to promote recycling and proper disposal by easing certain regulatory requirements.

Types of universal waste include:

- Light bulbs/lamps and ballasts
- Mercury & mercury-containing devices
- Batteries (large and small cell)
- Electronic waste (computers, monitors, printers, etc.)
- Household pesticides

Allied has extensive experience in characterizing, packaging, manifesting and managing universal wastes in residential, commercial and industrial settings.

Allied technicians are experienced in managing mercury in all forms:

- Elemental mercury in a pure form (liquid mercury)
- Sealed Mercury-containing devices including: thermostats, thermometers, switches, thermometers, sphygmomanometers (blood pressure meters), manometers and barometers
- Mercury salts and compounds

**In the case of a mercury spill, please call our
24-hr Emergency Response Hotline:
(800) 992-5781.**

■ Acid Neutralization Tank Service

Neutralization Tanks are generally located in facilities with chemical laboratories, such as educational facilities and hospitals. The tanks are designed to accept influent acid discharges from laboratory sinks or processes units. Limestone within the tanks chemically neutralizes the acidic discharge, which then is released to sanitary sewer. Problems often occur when inappropriate waste materials such as organic salts, oils, metal solutions and other compounds are flushed to the system.

Allied technicians are experienced in routine servicing, cleaning, and complete restoration of neutralization tank systems.

Allied recommends that neutralization tank systems be placed in a scheduled maintenance program, and that limestone be replaced every 2-3 years.





Environmental Consulting

■ Phase I Environmental Site Assessment (Phase I ESA)

Phase I ESAs are performed to identify environmental concerns attributed to current and past property uses, and to determine statutory liability and business risk related to environmental issues on a property. Allied conducts Phase I ESAs in accordance with the current ASTM E1527 standard and the EPA All Appropriate Inquiry (AAI) rule. Allied can also meet Brownfield and client-specific Phase I ESA requirements.

The quality and reliability of a Phase I ESA report depends on the knowledge, experience and thoroughness of the scientist conducting the assessment. Allied's scientists take great pride in our exhaustive attention to detail, which provides our clients with confidence when making property acquisition decisions.

■ Phase II Environmental Site Assessment (Phase II ESA)

Phase II Environmental Site Assessments (ESAs) typically involve the collection and laboratory analysis of soil, surface water and/or groundwater samples to confirm the presence and extent of chemical contamination on a property. The scope of a Phase II ESA is often based on the findings of a Phase I ESA, or interim response to a spill/release of contaminants.

Allied's staff includes geologists and technicians experienced in multi-media sampling techniques, including subsurface investigation through:

- Soil boring advancement
- Monitoring well installation & groundwater sampling
- Ground-penetrating radar survey

■ Contaminant Remediation

From multi-million dollar facility remediation projects, to clean-up of small releases, Allied can develop and implement a practical and effective remediation plan to eliminate/reduce contaminants to safe and acceptable levels.

- Mechanical removal/excavation & offsite disposal
- In-situ remediation systems
- Site restoration

Allied places great emphasis on presenting all analytical data, findings and recommendations in a technically sound, concise and easy to understand report format to ensure our clients fully understand the findings.





■ Underground Storage Tank (UST) Removal/Closure

Due to the propensity for subsurface leakage, UST systems are considered a significant risk to property owners and prospective buyers. Allied's experience and expertise can help reduce cost while ensuring a quick and effective resolution.

Allied's staff includes certified professionals that have successfully completed numerous UST removal and remediation projects. Services include:

- Preparation of required permits
- Excavation, removal and disposal of UST systems and any remaining fuel/product
- Regulatory closure assessments & environmental sampling
- Preparation of required reports and submittal to the regulatory agency

In the event a release of product has occurred, additional assessment and remediation may be required. Allied's experienced staff of geologists and technicians provide comprehensive services in pursuance of No Further Action (NFA) status.:

- Post-closure assessment (tier assessment)
- Development of remedial action plans
- Soil and/or groundwater remediation
- Assisting the client in pursuance of compensation/insurance board funding

■ Industrial Hygiene Consulting

Industrial hygiene refers to the recognition, evaluation, prevention, and control of environmental factors or physical conditions within the workplace that may cause sickness, discomfort and significant injury.

Allied scientists are trained and experienced in recognizing and evaluating workplace conditions that may adversely impact worker health and safety. Allied can assess the workplace conditions and provide practical solutions.

- OSHA compliance
- Air monitoring
- Dosimetry (noise) monitoring

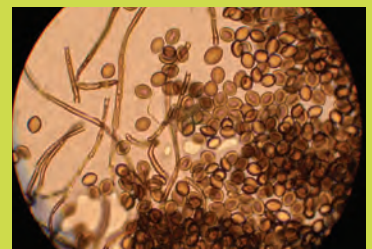
■ Indoor Air Quality & Mold

The quality of indoor air can be affected by a variety of conditions and contaminants including ineffective ventilation, excessive moisture, interior processes and equipment use, materials storage, and naturally occurring contaminants. Many indoor air quality issues are complex and difficult to identify.

Allied scientists are trained and experienced in the evaluation of indoor air quality issues, including mold. Using the latest methods and technology, Allied can properly evaluate conditions and recommend an effective solution.

Allied maintains an in-house fungal identification laboratory that provides timely and reliable analytical results

- Non-culturable air samples
- Bulk samples
- Tape-lift surface samples





Asbestos & Lead Paint Management



■ Asbestos Inspection & Laboratory

Allied was founded in 1987 as an asbestos consulting and abatement firm. We have over 26 years experience completing asbestos surveys, management plans, abatement projects, and third-party project oversight and specification writing.

Allied's team of certified inspectors have conducted over 3,000 asbestos surveys/inspections of industrial facilities, schools, hospitals, shipping vessels, commercial structures and residential dwellings. Allied inspectors are trained in survey protocol and sampling methodologies per EPA AHERA and NESHAP regulations.

- Comprehensive surveys of industrial, commercial and residential structures
- NESHAP inspections for demolition/renovation
- Operations and Management Plans
- Third-party consulting, specification writing and project oversight
- Awareness training provided to facility personnel

Allied's asbestos lab is a proficient participant in the AIHA BAPAT Program and the AIHA IHPAT Program. The lab provides trustworthy and responsive analyses of:

- Bulk Asbestos Samples: Polarized Light Microscopy (PLM) per EPA Method 600/R-93/116
- Airborne Asbestos: Phase Contrast Microscopy (PCM) per NIOSH Method 7400

■ Asbestos Abatement

Allied has completed over 5,000 asbestos abatement projects in a wide range of settings from single family homes, to schools and hospitals, to heavy manufacturing facilities and oil refineries.

Allied maintains a full-time staff of certified and experienced asbestos abatement workers and supervisors. Whether the project requires repair, encapsulation or removal, our full-time crews can complete the project in a time-conscious, safe, and cost-effective manner.

Our comprehensive stock of equipment and supplies allows us to mobilize quickly and adapt to changes in project scope while avoiding costly delays.

- Complete removal
- Repair and encapsulation

■ Lead Paint Management

Lead is a toxic substance and can result in adverse health effects when ingested or absorbed into the body. Prior to 1978, lead was commonly added to paint as a component of pigments and as a stabilizer.

Allied is staffed with certified Lead Risk Assessors experienced in assessment methodology, including survey by x-ray fluorescence (XRF), collection of bulk (paint chip) samples, and monitoring of airborne lead concentrations. Allied assessors are certified to conduct lead inspections per HUD requirements.

Allied's staff also includes HUD certified Lead Workers licensed to conduct lead hazard abatement/removal. Allied has completed over 1,000 lead inspections and abatement projects in residential, commercial and industrial settings.

