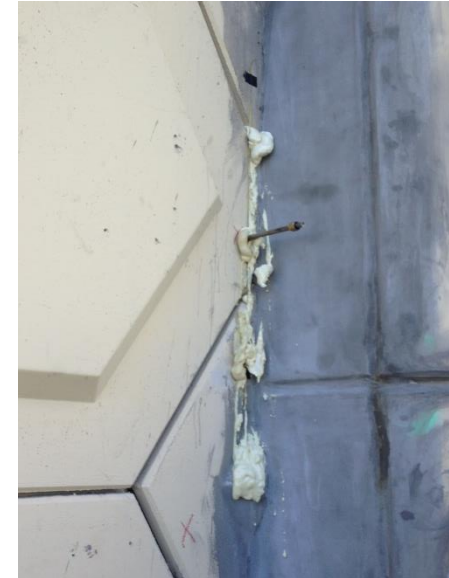
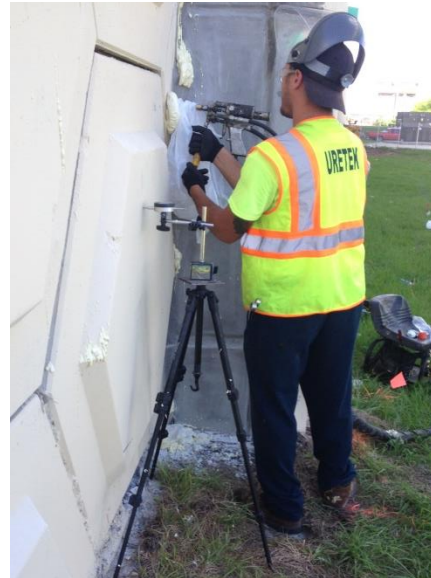


Void Fill behind MSE Wall

FLDOT & Dragados USA - Davie, Florida



Project Challenges

- Water infiltration from the Florida Turnpike degrading the support soils from behind the Mechanically Stabilized Earth (MSE) wall.
- Ensure 25 year-old MSE wall panel anchors were preserved and not disrupted.

Solution

- Inject structural polymer behind the panels to stabilize loose soil and fill voids to minimize soil erosion underneath the Turnpike
- Constant monitoring of the wall during injection as to not collapse the wall from the pressure of the material

Support

- Specifications from FDOT, Florida Turnpike Authority and General Contractor - Dragados USA
- Designed injection plan
- Ground Penetrating Radar (GPR) to locate the voids
- Pre-construction meeting
- On-site installation

Outcome

- **Problem Solved:** One day installation resulted in stabilization of panels
- **Mitigated Expense:** prevented FDOT and the Florida Turnpike Authority from having to completely replace the MSE wall.