



# HARVESTER

## PORTABLE



Defensible Automated E-Discovery  
Collection

**Harvester 4.0  
has Arrived!!**

## SEARCH AND COLLECT DISCOVERABLE DOCUMENTS AND EMAIL

Incomplete and undocumented electronic discovery collections occur every day. The result of mishandling these files can be costly to both the client and their legal counsel. Unlike other offerings, Pinpoint Labs doesn't require you to purchase additional products or services in order to facilitate a collection. Data collected with Harvester can be accessed with other popular E-Discovery tools. A simple flat rate pricing structure allows you to use the tools as often as you need without worrying about hidden fees.

## HARVESTER FEATURES

- ▶ Early Data Assessment (EDA) Reports
- ▶ Identifies non-searchable/encrypted files
- ▶ DeNIST and Dedupe
- ▶ Multi-threaded
- ▶ Set expired licenses for Harvester Portable using Portable License Manager (PLM)
- ▶ Create new PSTs or 8 different email formats from filtered messages
- ▶ Harvester ESI "easy" Vault (Custodial Drag and Drop window)
- ▶ Keyword filter MS Outlook PST's, attachments, loose files and archives

**With the release of Harvester 4.0 Portable, users have a completely redesigned and upgraded user interface, providing an even easier workflow when creating collection job profiles.**

**Harvester Portable** allows users to filter and defensibly collect E-Discovery files from a laptop, desktop or network locations. Harvester Portable can be run from an external hard drive or host computer. In addition to collecting data, Harvester Portable a very powerful culling tool that many use post collection to filter Microsoft Outlook PST's, and loose files by keyword, date range, and other criteria.

### COMMON HARVESTER PORTABLE USES:

- ▶ Send Self-Collection hard drive
- ▶ Keyword filter client data
- ▶ Regenerate Microsoft Office PST's
- ▶ Export Keyword indexes

**Self-Collection kits** allow users to pre-configure an external hard drive with customized collection job profiles, thus allowing the job to be run by a custodian or IT professional without any prior software training or experience. The scripted jobs can identify files and emails by keyword, date range, and also perform deduplication and deNIST-ing. Matching items will automatically be copied back to the attached drive. Harvester Portable will run from an external drive without installing any files on the host computer. Data collected with Harvester Portable can be processed with all popular E-Discovery tools or shipped to the vendor of your choice.

## THE HARVESTER 4.0 PORTABLE UPGRADE PROVIDES:

Significant performance enhancements when users need to search keyword terms ▶ Create keyword indexes and export the results ▶ Quickly build lists for relevant documents or preview hits real-time ▶ Review detailed information for file types, keyword hits, and other criteria by choosing which items to collect ▶ Target and review relevant E-Discovery content ▶ Quick access to collection statistics ▶ Harvester 4.0 users will easily create E-Discovery self-collection kits or use for in-house E-Discovery culling.

# PINPOINT LABS

PRESERVE · COLLECT · DISCOVER

▶ [WWW.PINPOINTLABS.COM](http://WWW.PINPOINTLABS.COM)

## POWERFUL E-DISCOVERY COLLECTION SOFTWARE

▶ 8246 Oddo Circle ▶ Murray, NE 68409 ▶ 402.235.2381 ▶ 888.304.1096



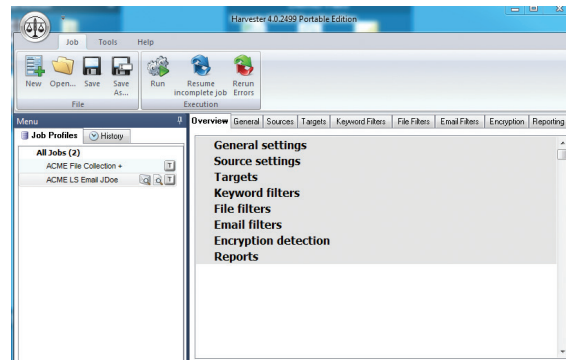
# HARVESTER PORTABLE



Defensible E-Discovery  
Collection Software

Check out the  
New Features!

Redesigned interface allows all options to be easily accessed within one interface. Users can view all job tickets, keyword reports, job history, and much more! This additional user-friendly feature makes training new Harvester users much easier.



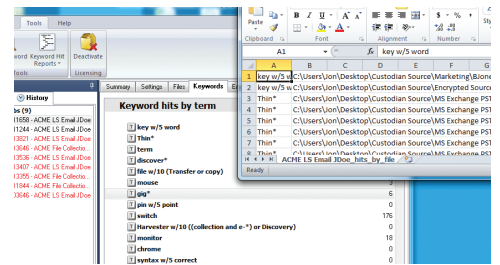
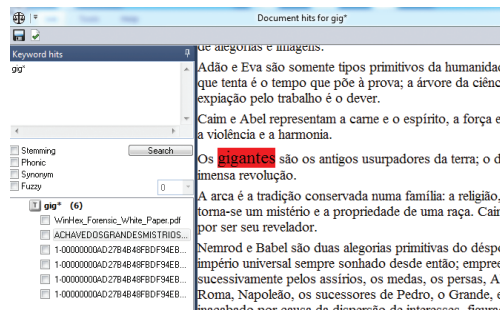
**Real Time Statistics -**  
hit preview to show what type of files you are collecting.

	Loose Files	Archived	Email Attach.	Total
Other	4 743 MB	0 / 0 Bytes	2 / 278 KB	6 / 743 MB
History and Settings Files	1 / 2083 KB	0 / 0 Bytes	1 / 2083 KB	1 / 2083 KB
dot	1 / 2083 KB	0 / 0 Bytes	0 / 0 Bytes	1 / 2083 KB
Web Documents	1 / 3772 KB	0 / 0 Bytes	0 / 0 Bytes	1 / 3772 KB
htm	1 / 3772 KB	0 / 0 Bytes	0 / 0 Bytes	1 / 3772 KB
Database Files	5 / 238 MB	18 / 757 MB	0 / 0 Bytes	23 / 995 MB
mdb	2 / 768 KB	9 / 322 MB	0 / 0 Bytes	11 / 397 MB
accdb	3 / 163 MB	9 / 435 MB	0 / 0 Bytes	12 / 598 MB
Images	1 / 801 MB	1 / 1508 KB	0 / 0 Bytes	2 / 816 MB
jpg	0 / 0 Bytes	1 / 1508 KB	0 / 0 Bytes	1 / 1508 KB
psp	1 / 801 MB	0 / 0 Bytes	0 / 0 Bytes	1 / 801 MB
Office Documents	38 / 2006 MB	0 / 0 Bytes	59 / 4024 MB	97 / 603 MB
Email Files	5 / 643 MB	0 / 0 Bytes	5 / 643 MB	5 / 643 MB
Archives	2 / 134 MB	0 / 0 Bytes	0 / 0 Bytes	2 / 134 MB

**Interactive (EDA) Early Data Assessment -**  
to help scope the project - users can apply search criteria with the option to uncheck any file types they are not wanting to preserve prior to finishing the collection phase.

	Loose Files	Archived	Email Attach.	Total
Office Documents	38 / 2006 MB	0 / 0 Bytes	59 / 4024 MB	97 / 603 MB
Images	1 / 801 MB	0 / 0 Bytes	0 / 0 Bytes	1 / 801 MB
Email Files	1 / 801 MB	0 / 0 Bytes	0 / 0 Bytes	1 / 801 MB
Other	4 / 743 MB	0 / 0 Bytes	2 / 278 KB	6 / 743 MB
Database Files	5 / 238 MB	0 / 0 Bytes	0 / 0 Bytes	5 / 238 MB
Archives	2 / 134 MB	0 / 0 Bytes	0 / 0 Bytes	2 / 134 MB

**Keyword hit highlighting**  
allowing you to verify what keywords and how many hits are located within each document. You can then cull your data down further by conducting an additional **keyword search**. This is great for creating subsets and whittling down false positives.



**Keyword hit reports** can be saved in 4 different formats - essential in attorney review.



# HARVESTER SERVER



Defensible Automated E-Discovery  
Collection

**Harvester 4.0  
has Arrived!!**

## SEARCH AND COLLECT DISCOVERABLE DOCUMENTS AND EMAIL

Incomplete and undocumented electronic discovery collections occur every day. The result of mishandling these files can be costly to both the client and their legal counsel. Unlike other offerings, Pinpoint Labs doesn't require you to purchase additional products or services in order to facilitate a collection. Data collected with Harvester can be accessed with other popular E-Discovery tools. A simple flat rate pricing structure allows you to use the tools as often as you need without worrying about hidden fees.

## HARVESTER FEATURES

- ▶ Early Data Assessment (EDA) Reports
- ▶ Identifies non-searchable/encrypted files
- ▶ DeNIST and Dedupe
- ▶ Multi-threaded
- ▶ Create new PSTs or 8 different email formats from filtered messages
- ▶ Harvester ESI "easy" Vault (Custodial Drag and Drop window)
- ▶ Keyword filter MS Outlook PST's, attachments, loose files and archives

**Harvester 4.0 Server offers a completely redesigned and upgraded user interface, providing an even easier workflow when creating collection job profiles.**

### COMMON HARVESTER SERVER USES:

- ▶ Remotely collect E-Discovery data from custodian computers across the network
- ▶ Monitor job progress and generate reports from a central location
- ▶ Run customized job profiles that keyword search, deduplicate, deNIST, and perform many other targeted collection options

**Harvester Server** allows users to filter and defensibly collect E-Discovery files from a laptop, desktop or network locations. Harvester Server can be used to monitor jobs from a central location and launch pre-configured collection job profiles on remote computers. In addition to collecting data, Harvester Server is also a very powerful culling tool that many use post collection to filter Microsoft Outlook PST's, and loose files by keyword, date range, and other criteria. Being able to get real-time feedback as collection jobs start and monitor overall progress is very useful. Progress results can be emailed directly from Harvester Server as a Microsoft Excel spreadsheet, PDF, RTF, and many other formats.

**Remote Collection:** Harvester Server administrators can pre-configure collection job profiles which can be ran in "stealth" mode on remote computers. Harvester collection job profiles can also be launched by a link in an email or legal hold notice sent to each custodian. The scripted jobs can identify files and emails by keyword, date range, and also perform deduplication and deNISTing. Matching items will automatically be copied to the specified network target location. Data collected with Harvester Server can be processed with all popular E-Discovery tools or shipped to the vendor of your choice.

## THE HARVESTER 4.0 PORTABLE UPGRADE PROVIDES:

The ease to centrally manage and monitor Enterprise level collection or culling jobs – whether they are running directly from local production computers or remote systems

- ▶ Ability to run a job from any shared network location
- ▶ Option to create keyword indexes and export the results – allowing users to quickly preview their hits real-time across a large number of client systems
- ▶ Review detailed information for file types, keyword hits, and other criteria choosing which items to collect
- ▶ Customize colors for running jobs and use advanced filtering options.

# PINPOINT LABS

PRESERVE · COLLECT · DISCOVER

▶ [WWW.PINPOINTLABS.COM](http://WWW.PINPOINTLABS.COM)

## POWERFUL E-DISCOVERY COLLECTION SOFTWARE

▶ 8246 Oddo Circle ▶ Murray, NE 68409 ▶ 402.235.2381 ▶ 888.304.1096



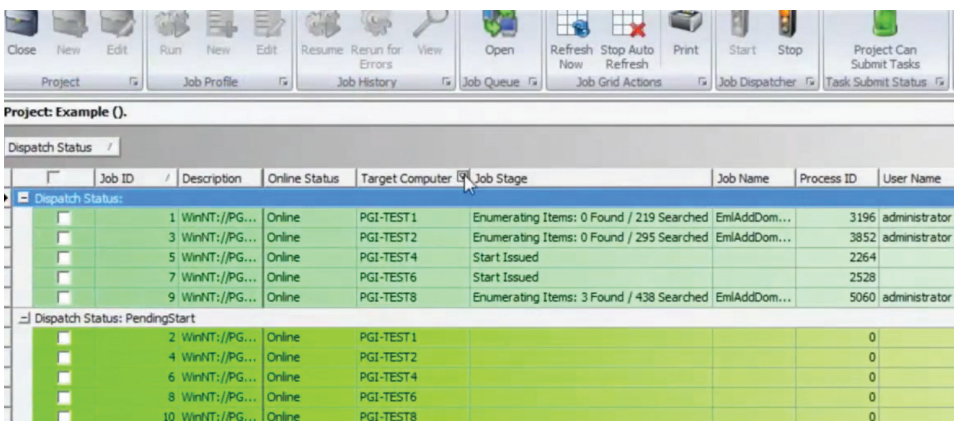
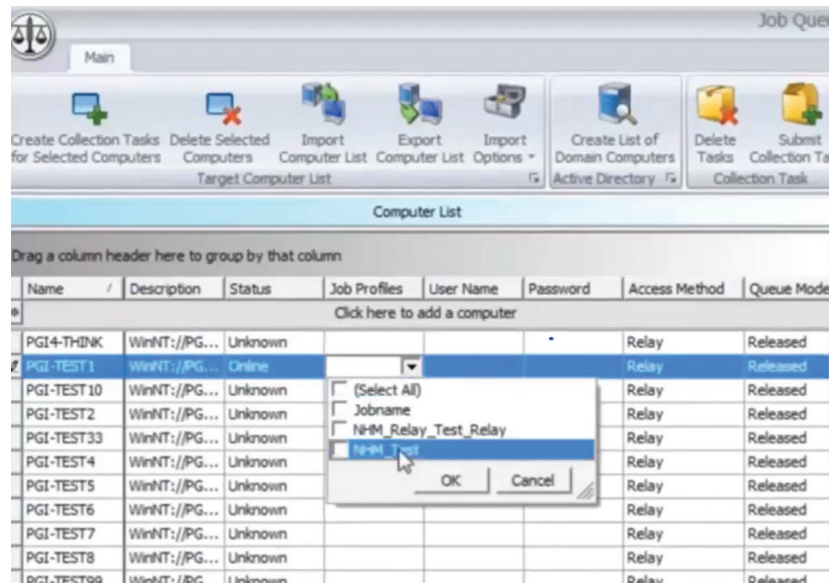
# HARVESTER SERVER



Defensible E-Discovery  
Collection Software

**Check out the  
New Features!**

Import a custom computer list or have Harvester take a quick inventory of all the computers on the domain Directory Search by using **Active Directory Search**. Then you can quickly ping the computers to make sure the computer is online, assign the job to a specific job profile (great for legal holds), and apply a specific job ticket to be remotely launched on that custodians computer.



## ADDITIONAL HARVESTER 4.0 SERVER FEATURES:

- ▶ Upgraded user interface provides administrator easy access to profiles, job monitor, and scheduling
- ▶ Automated job resume for remote client systems
- ▶ Job dispatcher manages collections across multiple projects
- ▶ Easily open, run or edit job profiles

Efficiently organize and monitor all of your projects and jobs that are being processed across the network.

# PINPOINT LABS

PRESERVE · COLLECT · DISCOVER

▶ [WWW.PINPOINTLABS.COM](http://WWW.PINPOINTLABS.COM)

## POWERFUL E-DISCOVERY COLLECTION SOFTWARE

▶ 8246 Oddo Circle ▶ Murray, NE 68409 ▶ 402.235.2381 ▶ 888.304.1096

## Evidox Provides Comprehensive E-Discovery Collections Using Harvester Server Software

*"We go through an extensive vetting process with any software tool we use on our clients' data. Pinpoint Labs Harvester not only passed our internal tests with flying colors, our technicians have come to rely on it heavily in the field. The Pinpoint Labs team has always been there to help when needed. I can't say enough about the quality of the products and people over at Pinpoint Labs."* — **Lynn Turgeon, COO**

*"We love the fact that Harvester can be placed on any portable drive or executed from a shared network location. This allows us to complete onsite collections with minimal setup on our client's computers. Running remote jobs without the custodian's knowledge is also critical to our clients and the collection process which Harvester performs exceptionally well."* — **Sam Bastawros, Senior Project Manager**

### ABOUT EVIDOX

Evidox is a leading provider of e-discovery services including collection, preservation, processing, hosting and production. Evidox differs from other vendors in its legal-centric approach. Its founders have AmLaw 100 backgrounds and previously ran the largest in-house e-discovery facility in New England.



The guiding philosophy of Evidox is that e-discovery is not a technical issue; it is a legal issue with a technical solution. As such, the questions of scope and cost remain in the hands of the supervising attorneys, not the technicians. The technology serves the legal process rather than driving it.

Evidox and its principals have conducted thousands of e-discovery projects in hundreds of cases involving many terabytes of data and millions of documents. In every case, however, the primary objective has been to make the project as compact, efficient and inexpensive as possible, consistent with the requirements of the discovery process.

### BUSINESS CASE EXAMPLE

Evidox was contacted by a client that needed electronic data collected from all employees in the company. The collection needed to take place without the custodian's knowledge. The sources included but were not limited to:

- ▶ Microsoft Exchange Email servers
- ▶ Employee file shares on the company network
- ▶ Employee file shares on cloud servers
- ▶ Employee local loose files and Outlook PST archives

The client provided 64 search phrases that included Boolean, proximity and wild cards. The source information also needed to be de-duped and de-NISTed at the point of collection. More than 6 terabytes of data were located in the sources identified.

To reduce the project cost, Evidox technicians offered to setup and manage the collection remotely through VPN access on their client's systems. The staff at Evidox found the perfect software tool they needed to complete the project from Pinpoint Labs.

**Harvester Server** from Pinpoint Labs is a scalable and robust tool specifically designed to perform targeted defensible e-discovery collections across a network or from portable devices. After reviewing several competing tools, Evidox chose *Harvester Server* because it provided ease of installation and the required searching and secure collection capabilities without being cost prohibitive. Evidox remotely installed and configured *Harvester Server* on a virtual server created at the client location for the collection project.

Using the *Harvester Server* remote job scheduler, Evidox technicians were able to launch the collection jobs without the custodian's knowledge and track the real-time progress from a central management console. File server collections were queued on the administrative systems provided and monitored remotely. At the end of each day, Evidox could report updates created by *Harvester Server* to the legal teams.

A total of 95 gigabytes of target data were identified and collected from more than 6 terabytes of storage searched. *Harvester Server's* ability to quickly search loose files, archives, email stores (Microsoft Outlook PST's, Lotus Notes NSF's), attachments and other sources enabled Evidox to provide a precisely targeted collection. The significant target data reduction (only .016%) resulted in a considerable savings in the client's production and hosting costs.

### TESTIMONIALS

*"We go through an extensive vetting process with any software tool we use on our clients' data. Pinpoint Labs Harvester not only passed our internal tests with flying colors, our technicians have come to rely on it heavily in the field. The Pinpoint Labs team has always been there to help when needed. I can't say enough about the quality of the products and people over at Pinpoint Labs."*  
— **Lynn Turgeon, COO**

*"We love the fact that Harvester can be placed on any portable drive or executed from a shared network location. This allows us to complete onsite collections with minimal setup on our client's computers. Running remote jobs without the custodian's knowledge is also critical to our clients and the collection process which Harvester performs exceptionally well."*  
— **Sam Bastawros, Senior Project Manager**

To learn more about Evidox, please visit their website at [www.evidox.com](http://www.evidox.com). More information on **Harvester Server** software from Pinpoint Labs is available at [www.pinpointlabs.com](http://www.pinpointlabs.com).



### HARVESTER FEATURES

- ▶ Early Data Assessment (EDA) Reports
- ▶ Keyword filter Active MS Outlook Accounts (Exchange, Yahoo, etc.)
- ▶ Identifies non-searchable/encrypted files
- ▶ Harvester ESI "easy" Vault (Custodial Drag and Drop window)
- ▶ Write files to TrueCrypt volume for security
- ▶ DeNIST and Dedupe
- ▶ Use with Portable ESI Self Collection Drives/Kits
- ▶ Keyword filter MS Outlook PST's, attachments, loose files and archives
- ▶ Dedupe across multiple MS Outlook PSTs
- ▶ Create new PSTs or 8 different email formats from filtered messages
- ▶ Search multiple timestamps
- ▶ Create file summary and file lists from filtered file and messages
- ▶ Multi-threaded
- ▶ Set expired licenses for Harvester Portable using Portable License Manager (PLM)
- ▶ No per gig fees and No per Custodian fees

### POWERFUL ESI COLLECTION SOFTWARE