

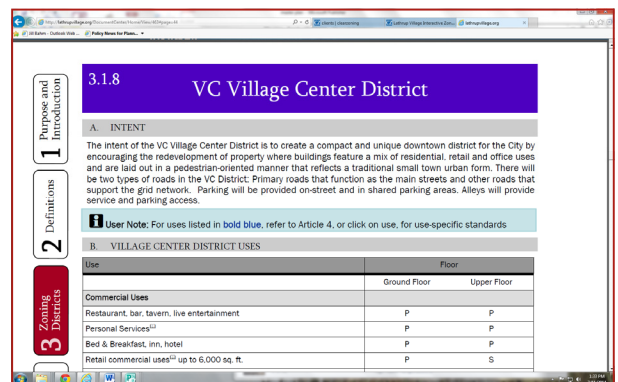
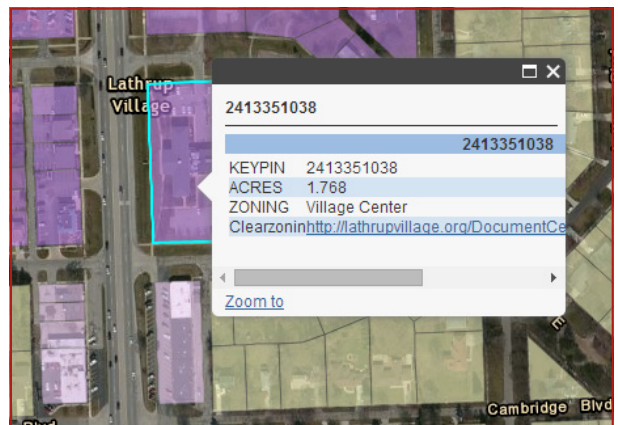
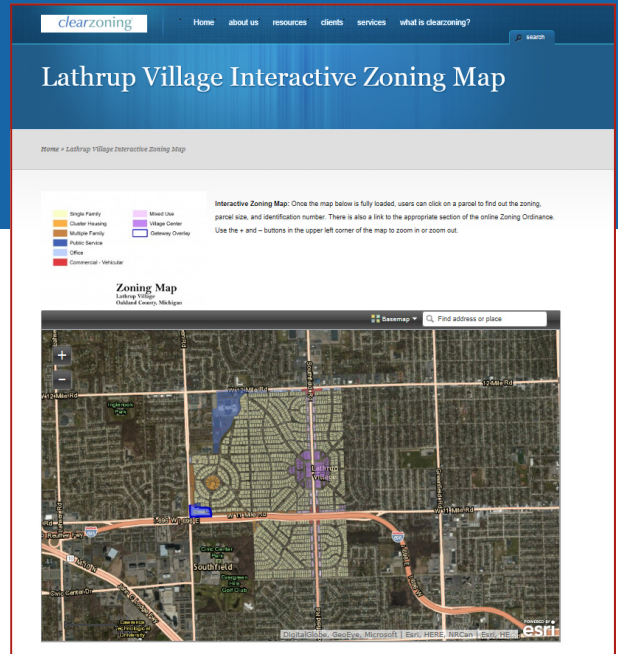
Focus on...
**Redevelopment Ready
 Zoning Tool: Interactive Maps**

Over the past year, Clearzoning staff has been working with the Michigan Economic Development Corporation (MEDC) on creating and presenting educational material for communities striving to make their development review process more efficient and effective. Along with teaching communities about how to utilize zoning code techniques to foster quality growth, we also discuss how to present the zoning code to allow users to get the answers to basic zoning questions quickly and easily, day or night.

Given this background, it is important for us to continue seek ways in which everyday technology can be used to help communities provide zoning information. We are pleased to announce a new feature for Clearzoning Ordinances: an **interactive map**. This mapping tool can be used by any community—even if they do not currently use Geographic Information Systems (GIS) or publish their GIS data online. Highlights of this new tool include:

- A community zoning map with an underlying aerial, parcel lines, and street names
- The ability to zoom in to be able to select just the right parcel of interest.
- Basic information, such as parcel id number, size, and the name of the zoning district.
- A hyperlink that takes the user directly to the zoning ordinance section that directs growth for that property.

This type of interactive zoning map allows users to not only find the zoning classification for a specific piece of property, but also be directed to zoning information that regulates that property. This tool makes getting answers to basic zoning questions easier, which can assist the development community and better inform residents.



Master Plans
 Recreation Plans
 Downtown Plans



Parking Studies
 Community Visioning
 Zoning Ordinances



Place Making
 Traffic Engineering
 Transportation Plans



Access Management
 Form-Based Codes
 Expert Witness Services

