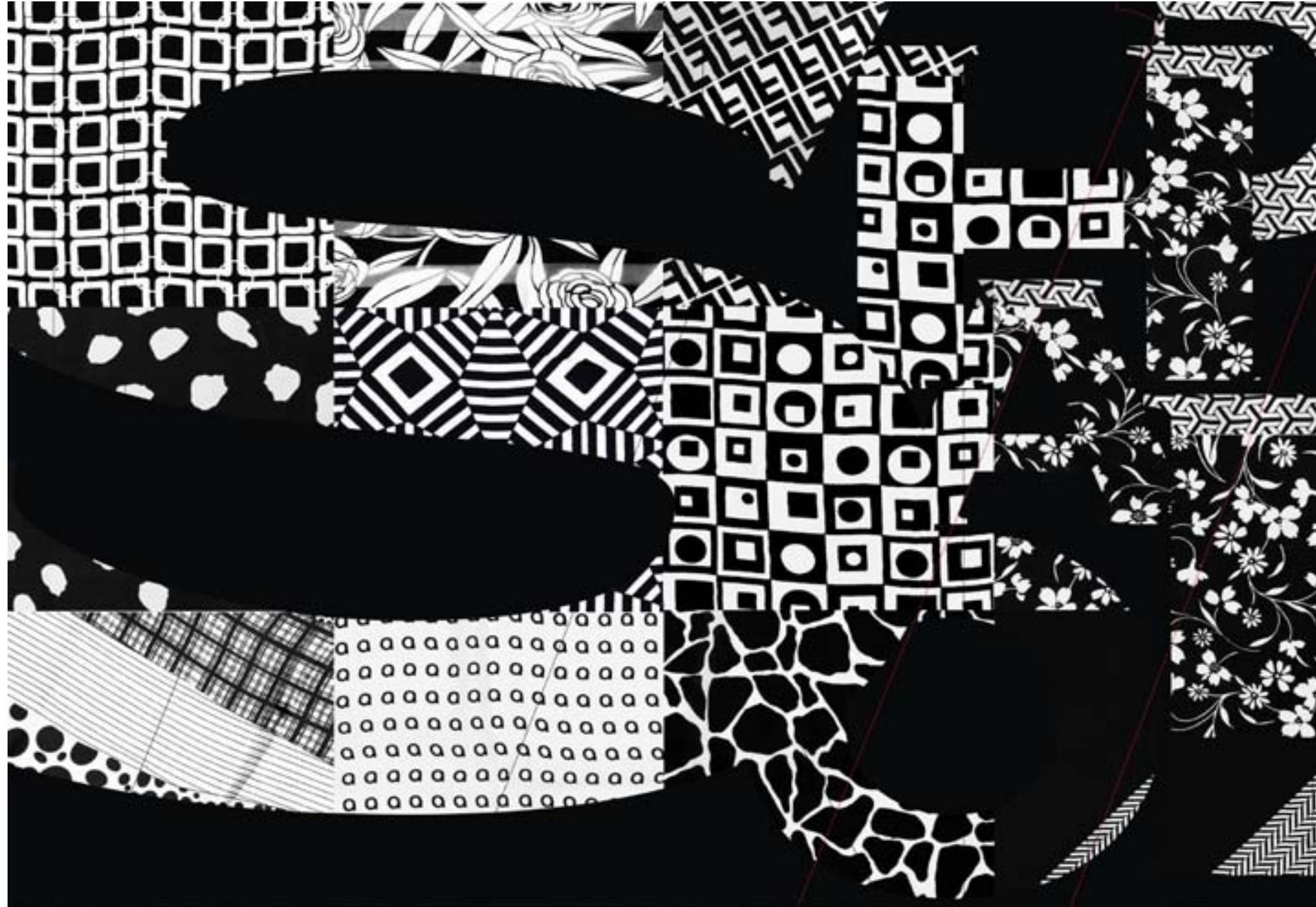




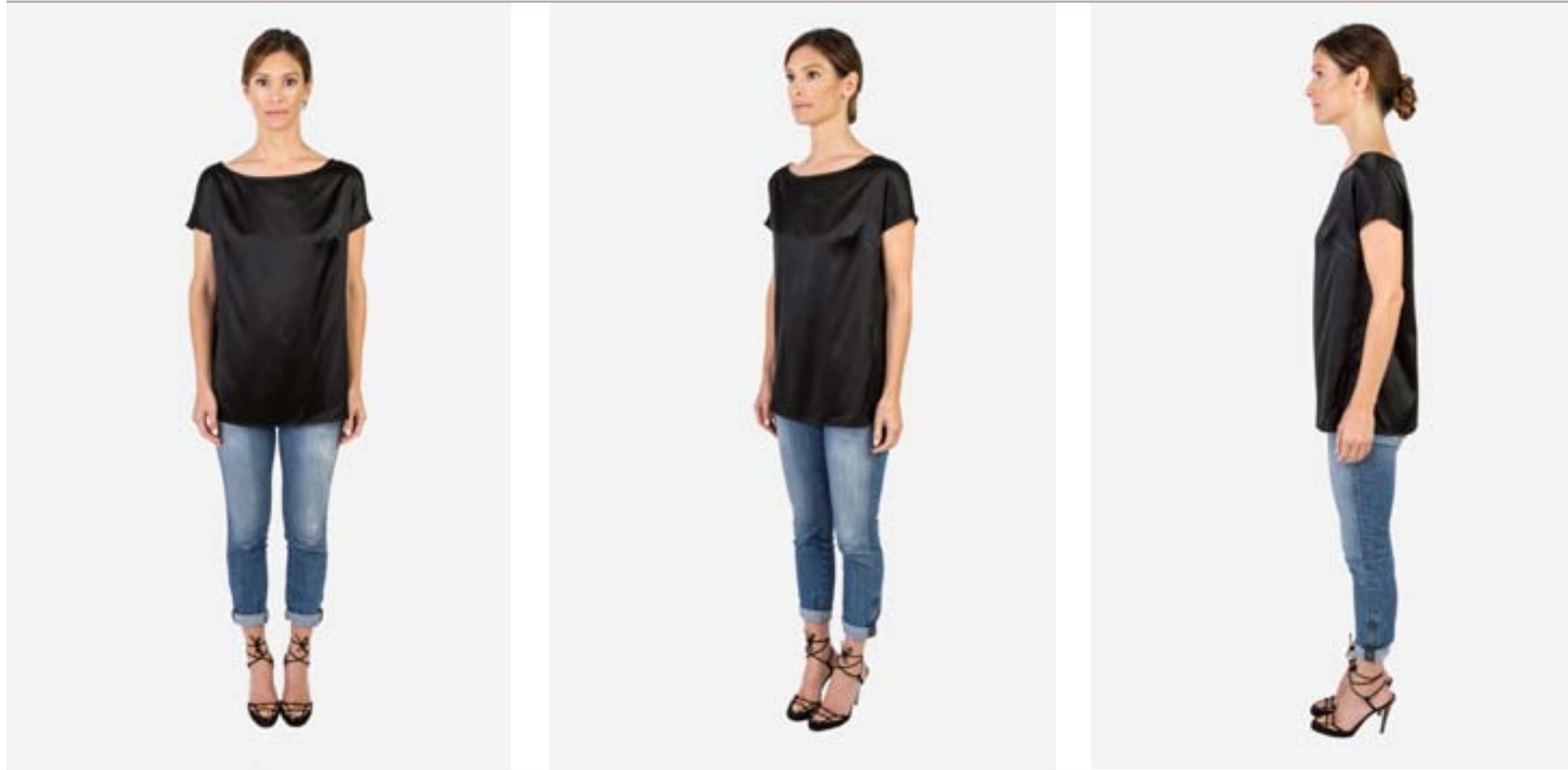
**AMANDA SHI**

Spring 2015



**A**manda Shi Collection is vintage inspired women's clothing with a hint of flair. This stylistic line showcases a variety of sexy tops and dresses with a combination of vintage detail, silhouettes and glamorous up-to-date attitude. The pieces, named after iconic women from the Golden Age of Hollywood, boast a mix of softness and fashion edge. Precisely tailored for perfect fit in fine silks with vegan leather and lace accents, The Amanda Shi Collection debuts in vivid and cinematic black and whites.





The Edna blouse series is reflective of a woman whose styles are unpredictable. She is named after Edna Purviance, the first great love of Charlie Chaplin, who appeared in many of his films with her fashionable flair. The three versions of this style reflect her capability of bringing various personalities with each role she played. Its silhouette that hugs your frame, and a seamless side for effortless sophistication.



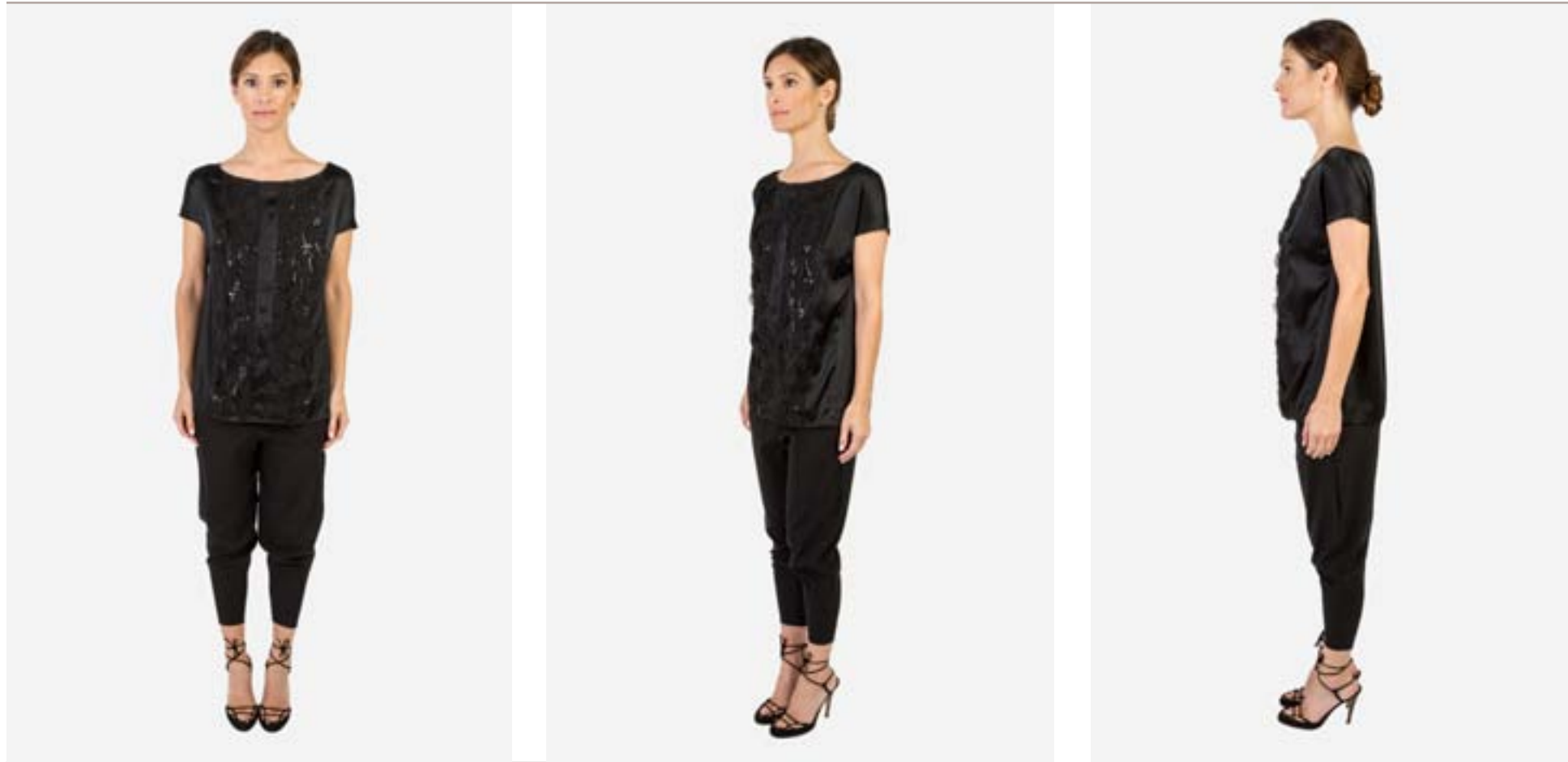
## Edna

Style #- AS81509

Fabrication- Silk Spandex

Colors- Black, White

Available sizes- XS-XL



Pictured above is our second version of Edna that steps it up a notch with floral lace sequins horizontal panels down the front. With this small addition to the style, this particular personality of Edna is clearly a little more fun.



## Edna

Style #- AS81508

Fabrication- Silk Spandex/Lace Floral Sequins

Colors- Black

Available sizes- XS-XL



The Zelda tank is another style influenced by a 1920's flapper. Dubbed "the First American flapper", Zelda Fitzgerald quickly rose to fame in her time. Shortly after, she reinvented herself, thus our motivation for our 3 different versions. They are representative of Zelda's popular playgrounds: NYC, Hollywood, and Paris. The Zelda tank has seamless sides and a beautiful hand cut scallop detail down the spine.



## Zelda

Style #- AS81506

Fabrication- Silk Spandex/Lace Floral Sequins

Colors- Black

Available sizes- XS-XL

Our sequin version of Zelda is a luxurious and sophisticated elegance. The Zelda's simple form mixed with our floral lace sequins which is hand sewn on one by one, is beautifully crafted and simple chic.



The Norma blouse is named after silent film star of the roaring 20's Norma Talmadge. Not only was she a star, she was also a savvy businesswoman. She was elegant, glamorous, and known for playing roles that were ahead of their time. Our Norma top is the silent and elegant woman of today. Made with our 100% Silk Chiffon paired with 100% Silk Habutai, she presents a put-together look. Her seamless shoulder and sheer portion of her décolletage gives an added sexy sophistication.



Lydia

Style #-AS81515

Fabrication- 100% Silk, Vegan  
Leather Piped Lace, Floral Lace  
Sequins

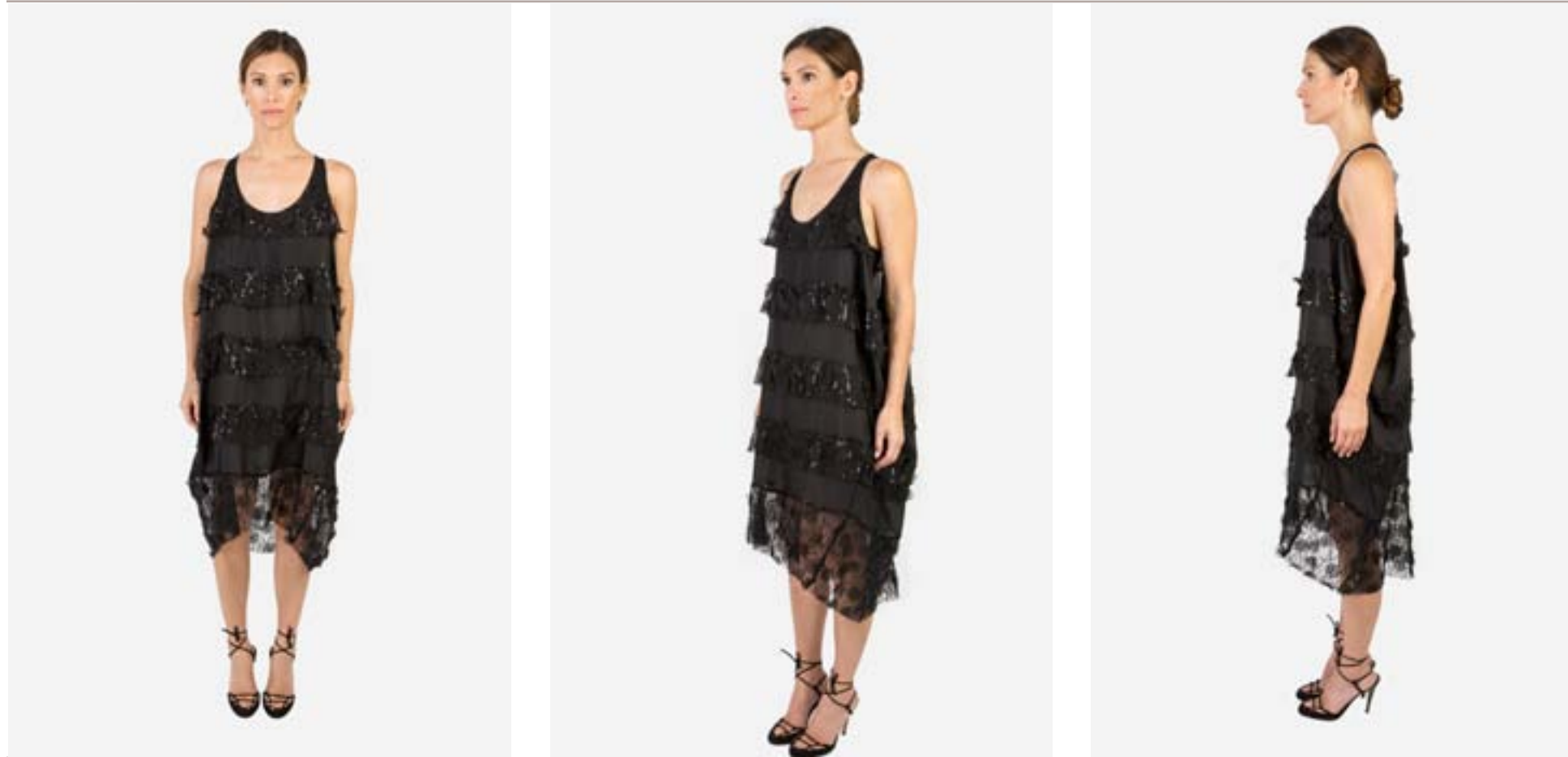
Colors- Black

Available Sizes- XS-XL



The Lydia Jacket is one of the stars of the collection. Named after socialite and flapper girl Lydia Williams, this jacket presents her attitude and party girl style. With its mix of leather pipe lace, floral sequins embellishment, and the stronger version of our silk habutai, this moto inspired jacket has a tough feel with a girly edge. The mix of Lydia's fabrication along with her ability to be worn in three different ways reflects her unique character and gives you a glimpse of just how truly special she is.





The Coco Chanel. A classic shape and effortless style. This piece is made to flow with your body. Its sexy, lightweight fabric and design is the perfect piece for a night out or an important occasion. This simple yet elegant dress shows just the right amount of skin in just the right places. An exquisite blend of our silk habutai and floral lace sequins, its sheer panels are strategically placed to prevent it from being too revealing. Its the perfect modern take on the little black dress.



## Coco

Style #- AS81514

Fabrication- 100% Silk /Lace Floral Sequins

Colors- Black

Available size- XS-XL



## Edna

Style #- AS81510

Fabrication- Vegan Leather Piped Lace

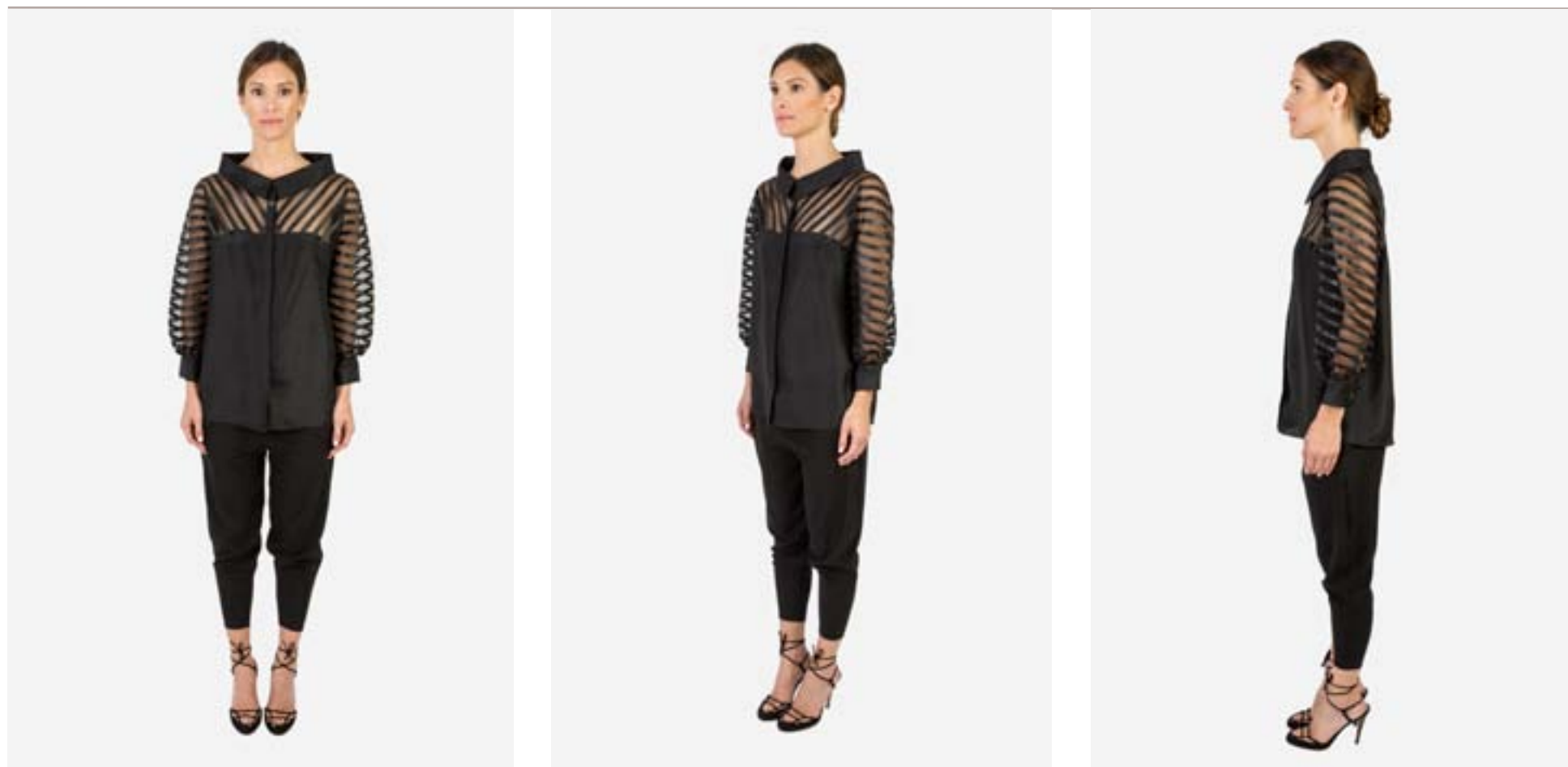
Colors- Black

Available size- XS-XL

This third version of Edna is bold and daring. Made strictly with our vegan leather piped lace, this Edna style represents strength and daring style. The v-shaped slit in the back that's left open gives an added element to the design.



Anita Page was a Broadway star in the 20's. She starred in one of the first true film musicals which depicted two sisters in love with the same man. Our two Anita designs are representative of them. Shown above, this clean and simple Anita has sheer arms and shoulders made with the finest silk chiffon. The body, collar, and cuffs are made with 100% silk. It's one of a kind collar makes a presence in any room you enter.



## Anita

Style #- AS81504

Fabrication- 100% Silk, Vegan leather piped lace

Colors- Black

Available size- XS-XL

This second Anita design speaks for itself. She is strong and makes a statement. The sheer portion is replaced with our vegan leather piped lace giving it a bolder look. Both Anita styles are created with seamless shoulders and arms and tailored with invisible stitches, reflecting our refined quality.



## Norma

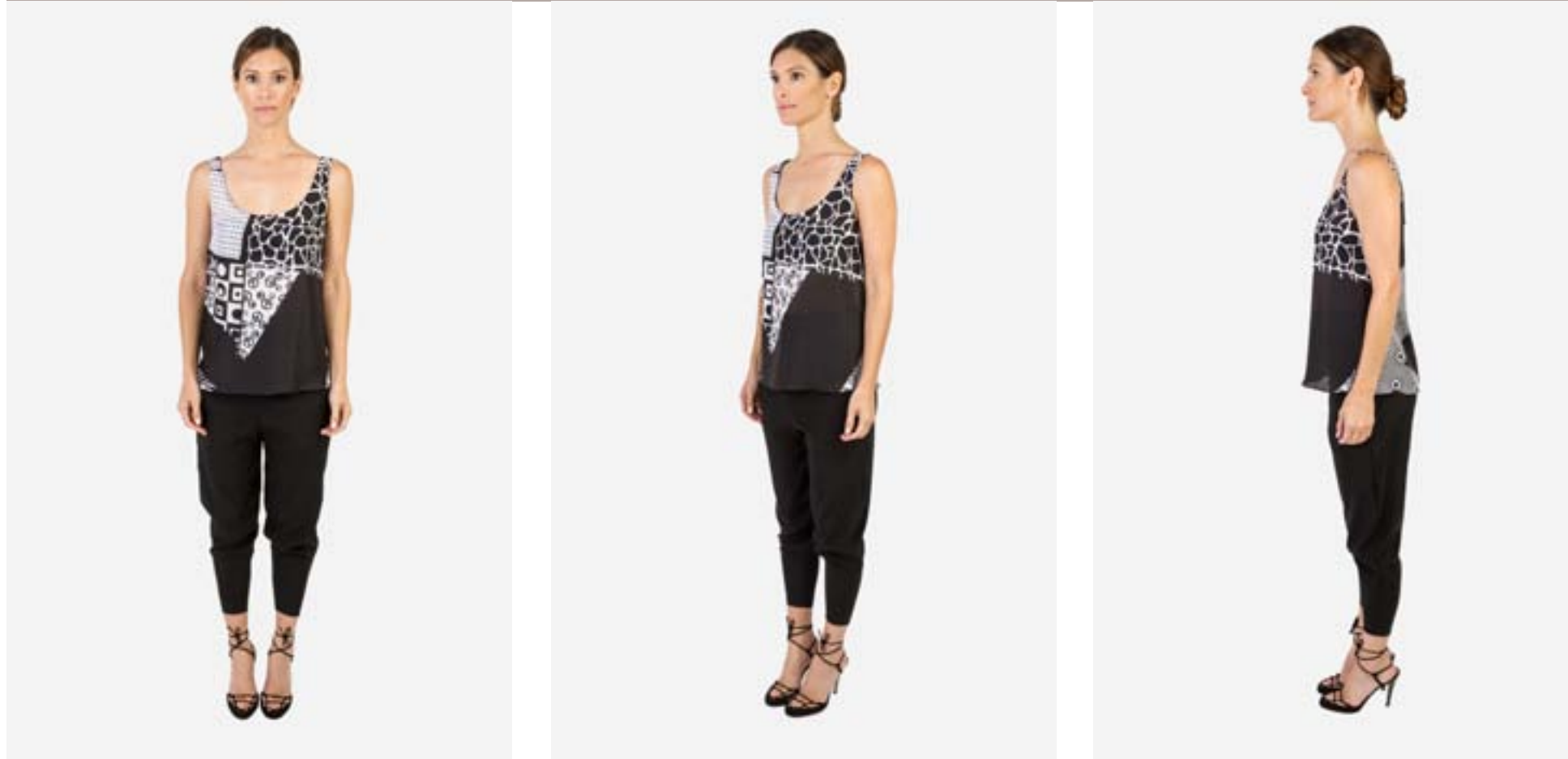
Style #- AS81502

Fabrication- 100% Silk

Colors- Vintage Silk Print

Available size- XS-XL

This printed Norma has hand picked portions of our print fabric derived from vintage black and white scarves. Precisely and intricately patched together, you will not find one and the same.



## Zelda

Style #- AS81507

Fabrication- 100% Silk

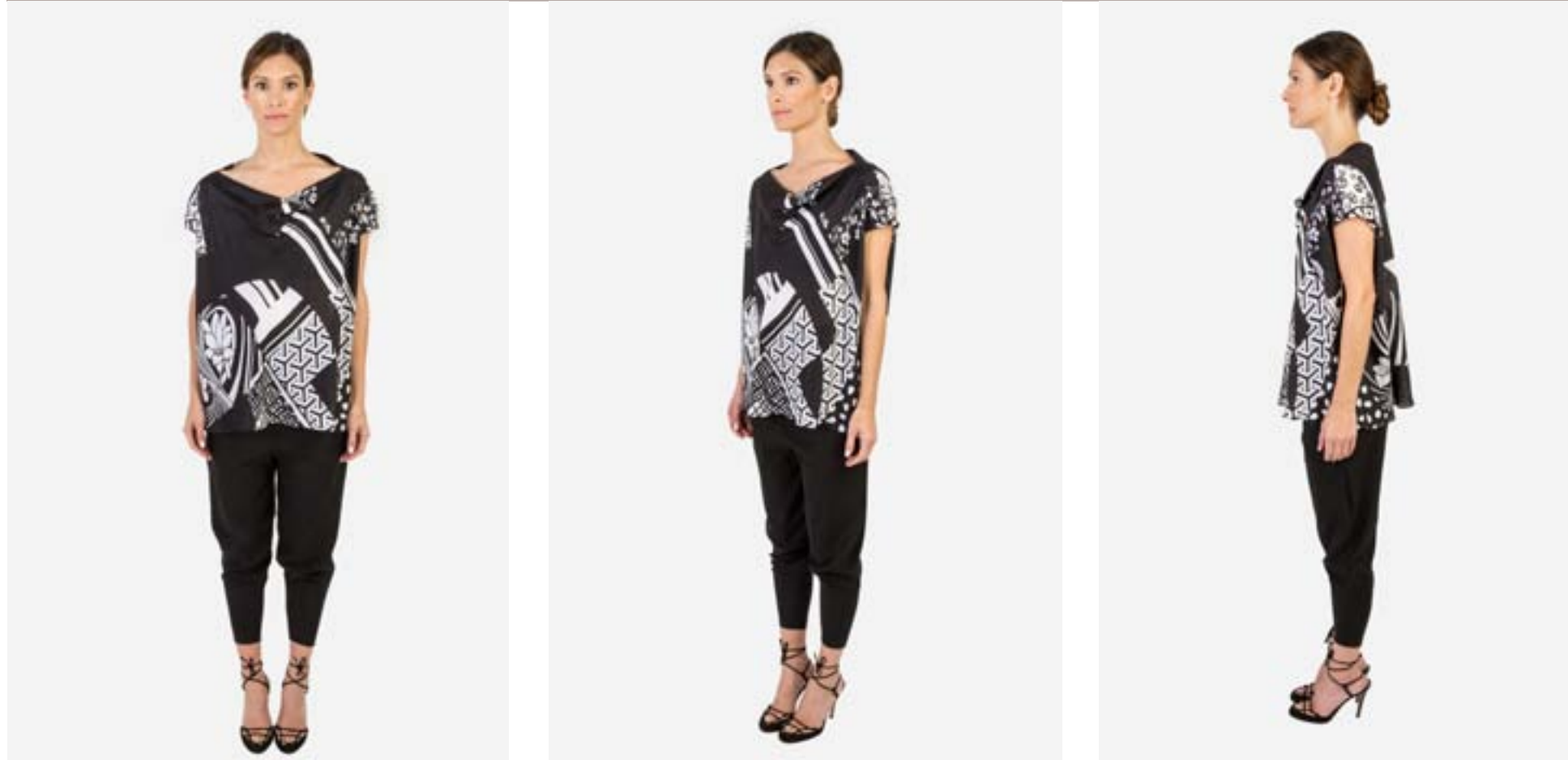
Colors-Vintage Silk Print

Available size- XS-XL

This is another version of our Zelda tank. Made with our habutai print, its looser fit is stylishly comfortable. Once again, she is created without side seams creating a uniform look of our vintage print all around.



The Joan blouse is inspired by Joan Crawford, and Oscar-winning film and TV actress who rose to fame in the 20's. Over the course of her 45 year working career, she created a name for herself not only through acting, but through dance. Her movement and body struck her audience with awe. This Joan design is a free flowing blouse. It creates movement and its collar reflects Crawford's spunky and sexy personality. Her 100% fine silk fabric breathes easily and the overall garment moves beautifully with ease.



## Joan

Style #- AS81512

Fabrication- 100% Silk

Colors-Vintage Silk Print

Available size- XS-XL

Our printed Joan is inspired by Joan's reinvention of herself. Made with our unique custom print, you can see more patched print than any other style due to our tailored construction.





The Coco top is a modified version of the dress. This simple and flowy design drapes beautifully on the body. The individual hand stitched loops on its back inspired by a dress that dates back to the 40's, is that unique touch which separates her from the rest.



## Coco

Style #- AS81513

Fabrication- 100% Silk

Colors- Black, White

Available sizes- XS-XL



# Amanda Shi Collection

Showroom Sales:

Marilyn Rodriguez/Room Showroom  
860 South Los Angeles St, Lobby 100A  
Los Angeles, CA 90014  
213-248-1292  
info@room.io

Press Contact:

Jody Green/Frame Public Relations  
Executive Director  
917-292-7070  
jody@frame-pr.net