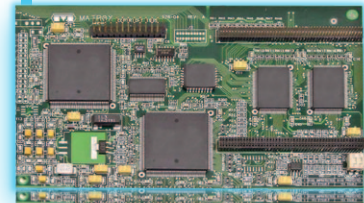


42" Wildfire3D™ Glasses-Free 3D Display

Enabl3D™	
3D Type	Autostereoscopic
Optical Principle	Lenticular Lens
Views	9
Optimal Viewing Distance (ft)	8'-20'
True Volumetric Perception™	24"
3D Viewing Angle (left/right)	50°/50°
2D Viewing Angle	178°/178°
Wildfire3D™	
Conversion	Stereo to Autostereo
Input Format	Side-by-Side to E3D format
Input Dimensions	960 x 1080(L) by 960 x 1080(R)
Display	
Viewable Image Size	42"
Aspect Ratio	16:9
Native Resolution	1920 x 1080
Backlight Type	CCFL
Brightness (typical)	500 cd/m ²
Contrast Ratio (typical)	1200:1
Synchronization Range	
Horizontal (analog/digital)	30-65 kHz
Vertical	56-75 Hz
Connectivity	
Digital	DVI-D
Analog	VGA 15-pin D-sub, 5 BNC, S-Video, BNC Composite
Power Consumption	
On	<250W
ECO Mode Standby	<20W
Physical Specifications (typical)	
Dimensions (W x H x D)	
Net (with stand)	40.3 x 25.6 x 13 in. / 1022.9 x 651.3 x 330.2mm
Net (without stand)	40.3 x 24.2 x 5.2 in. / 1022.9 x 613.5 x 133mm
Weight	
Net (with stand)	67.2 lbs. / 29.6 kg
Net (without stand)	57.2 lbs. / 20.0 kg
VESA Hole Configuration	200 x 200mm/200 x 600mm (12 hole)
Environmental Conditions	
Operating Temperature	41-104°F / 5-40°C
Operating Humidity	20-80%
Operating Altitude	9843 ft. / 3000m
Storage Temperature	-4-140°F / -20-60°C
Storage Humidity	10-90%
Storage Altitude	40,000 ft. / 12,192m
Warranty	
Limited Warranty	1 year



42"
Model: M3D-ALL42WF



Wildfire3D™

**Automatically converts
Side-by-Side format
to glasses-free 3D
in real-time**

Side-by-Side Guidelines



**Stereo to Autostereo
Conversion**

