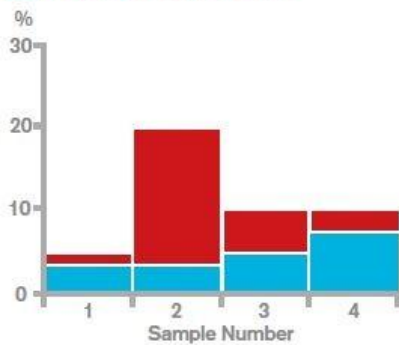


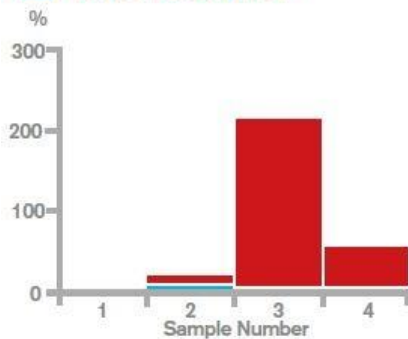
Technical Data Sheet – FDA Silicone Sponge

1 Compression Set



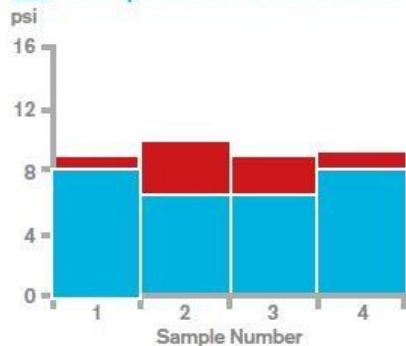
1 Low compression set demonstrates the ability of the rubber to return to its original thickness after prolonged compressive stresses at a given temperature and deflection

2 Water Absorption



2 Lower water absorption of the sponge means more closed cells in the material; this gives more consistent sealing performance and reduces the risks of liquid leakage in service.

3 Compression Stress Strain



Testing taken from different thicknesses

3 Compression Stress Strain (often referred to as Compression Force Deflection) is a measure of how much force it takes to deform/displace the sponge specimen by given amount.

Summary Technical Data

Property	Units	Typical Value
Density	kg.m ⁻³ (lb/ft ³)	420(26)
Compression Stress 25% Strain	kPa(psi)	55 (8)
Elongation to Failure	%	590
Compression Set 50% comp. 24hrs. recovery 22 hrs @ 70°C (158°F)	%	4.0
Temperature	°C (°F)	-60 to 230 (-76 to 446) and up to 250 (482) intermittent

■ Competitor samples
■ FDA Silicone Sponge (Elasto Proxy)

*Competitor samples collated from different continents around the world

4035 Lavoisier Street
Boisbriand, Quebec,
Canada
J7H 1N1
Phone: (450) 434-2744
Fax: (450) 434-5998

220 Pony Drive - Unit #1A
Newmarket, Ontario,
Canada
L3Y 7B6
Phone: (905) 898-1139

1021-C Old Stage Road
Simpsonville, South Carolina,
USA
29681-6044
Phone: (864) 228-5900
Fax: (864) 963-8992

Suite 10A20, 10/F,
Shanghai Mart
No. 2299 Yan'an Road West
Shanghai 200336, China
Phone: (86)-21-62366792
Fax: (86)-21-62366787