

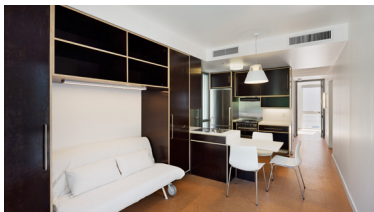
MODULAR BUILDING OF THE MONTH

CHANGING THE WAY THE WORLD BUILDS
GREENER. FASTER. SMARTER.

November



Urban Interim Housing Prototype



Permanent Modular Construction: Urban Density Housing / Mixed-Use

Location: Brooklyn, NY

Total Square Feet: 2,100

Time to Complete: 150 Days

Company: Mark Line Industries

Affiliates: Garrison Architects (Brooklyn, NY) and American Manufactured Structures & Systems (AMSS)

Developed for the New York City Office of Emergency Management, Mark Line Industries, Garrison Architects and American Manufactured Structures and Services were hired to design and build a modular post-disaster housing prototype for displaced city residents in the event of a catastrophic natural or manmade disaster. The multi-story, multi-family units can be deployed in less than 15 hours, in various arrangements, calibrated for challenging urban conditions.

BROUGHT TO YOU BY:



LEARN MORE AT
WWW.MODULAR.ORG