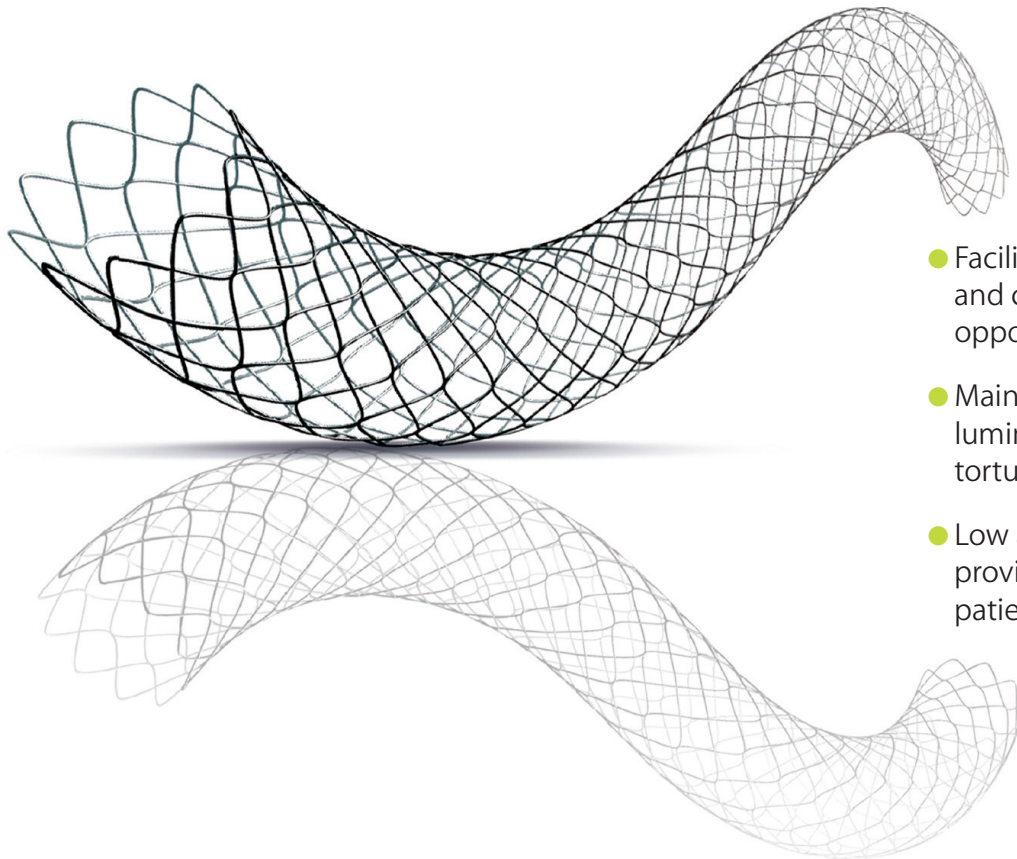
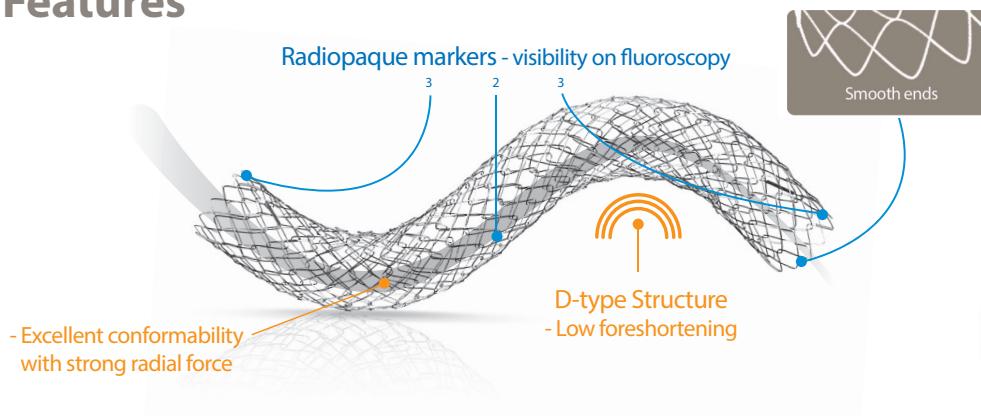


Taewoong Niti-S™ Biliary Stent (D-type)

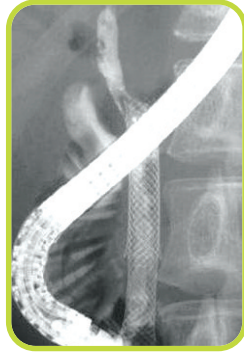


- Facilitates immediate and continuous wall opposition
- Maintains full luminal patency in tortuous anatomy
- Low axial force provides for improved patient comfort

Features

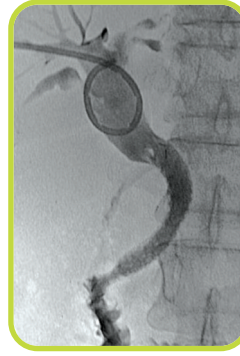


X-Ray: Niti-S vs Competitor



Niti-S

VS



Competitor

Ordering Information

Product Type	Part No.	Stent		Introducer System	
		Diameter (mm)	Length (mm)	Diameter	Usable Length
Biliary Stent	G-BD0804	8	40	8 Fr	180 cm
	G-BD0805	8	50	8 Fr	180 cm
	G-BD0806	8	60	8 Fr	180 cm
	G-BD0807	8	70	8 Fr	180 cm
	G-BD0808	8	80	8 Fr	180 cm
	G-BD0809	8	90	8 Fr	180 cm
	G-BD0810	8	100	8 Fr	180 cm
	G-BD0812	8	120	8 Fr	180 cm
Product Type	PartNo.	Stent		Introducer System	
		Diameter (mm)	Length (mm)	Diameter	Usable Length
Biliary Stent	G-BD1004	10	40	8 Fr	180 cm
	G-BD1005	10	50	8 Fr	180 cm
	G-BD1006	10	60	8 Fr	180 cm
	G-BD1007	10	70	8 Fr	180 cm
	G-BD1008	10	80	8 Fr	180 cm
	G-BD1009	10	90	8 Fr	180 cm
	G-BD1010	10	100	8 Fr	180 cm
	G-BD1012	10	120	8 Fr	180 cm

Clinical Reference

Ki Young Yang.

A comparison of the Niti-S biliary uncovered stent and the uncovered Wallstent in malignant biliary obstruction.

Gastrointestinal Endoscopy
Volume 70, No.1: 2009



An ISO 13485 Registered Company

200 Grandview Avenue
Camp Hill, PA 17011
Toll Free: 800.451.5797
Fax: 717.761.0216
Email: info@gi-supply.com
Web: gi-supply.com