

A total system approach to managing your breath alcohol test and calibration data. With AlcoMark you can use your PC to print, sort, edit and save your data. The perfect tool for analyzing and archiving your results.

AlcoMark[®] Breath Testing Management Software

Unlock the Power
of Alcohol Testing

Overview

AlcoMark is a software program developed by Lifeloc Technologies exclusively for use with Lifeloc breath testing equipment. The AlcoMark database application houses breath test and calibration results from any number of Lifeloc instruments. The program enables communication between Lifeloc equipment and PCs, allowing you to view, sort, filter, print, edit and archive your breath test and calibration data. Results can be exported to Excel, XML or Text files to allow for further analysis and sharing of data.

AlcoMark also provides remote diagnostic capability, making it possible for your breath testing equipment to communicate directly with Lifeloc Technical Support in order to easily diagnose and quickly resolve any issues.

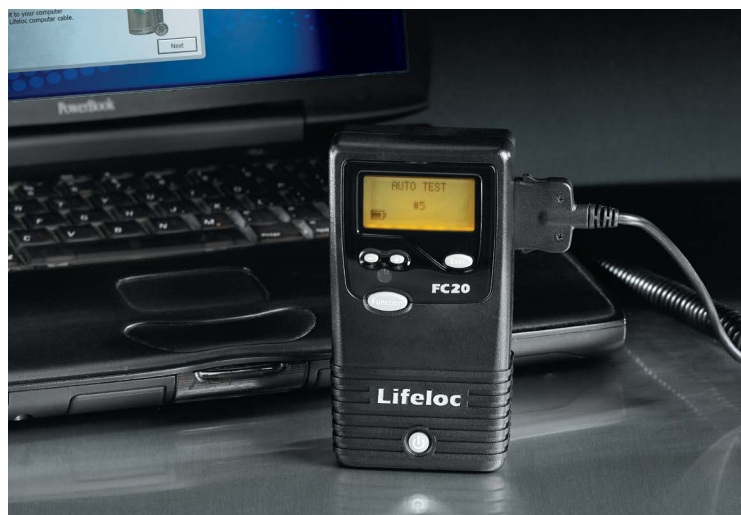
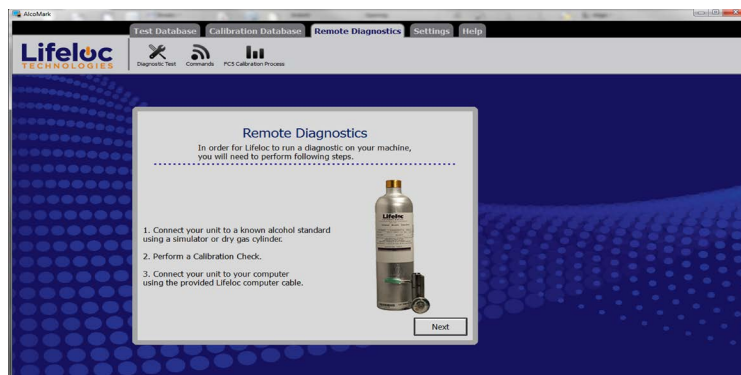
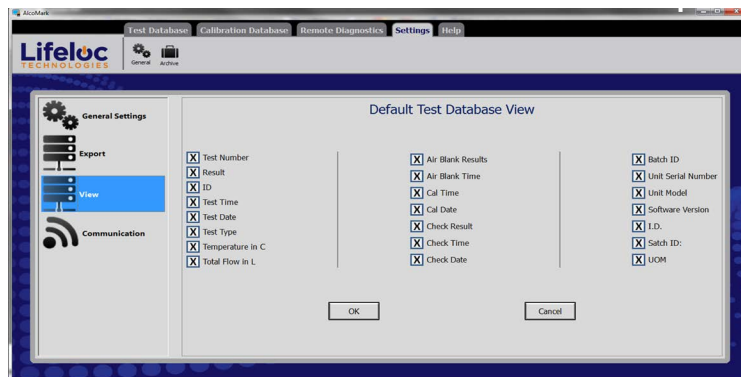
The software is simple to install and has a user friendly interface. It is available as a single install or with a site license supporting up to five PCs.

Functionality

- Upload breath test and calibration results into database
- Customize database view
- Print test and calibration results directly from AlcoMark
- Export data to Excel, XML and Text files
- Search, sort and filter results for data analysis
- Archive test and calibration results
- Remote diagnostics

Compatible Lifeloc Equipment

- FC10Plus
- FC20
- FC20BT
- EV30
- Phoenix 6.0
- Phoenix 6.0BT



Software Installation	AlcoMark CD
PC Operating System	Microsoft Windows Vista, Windows 7, Windows 8, Windows 8.1
USB Port	USB computer cable included with AlcoMark for connecting Lifeloc device with PC
Language	English or Spanish
Warranty	1-Year Warranty
Compatible Equipment	FC10Plus, FC20, FC20BT, EV30, Phoenix 6.0, Phoenix 6.0BT

All of Lifeloc's Breath Alcohol Testers are DOT/NHTSA approved.