

Signature
SIGNATURE SERIES

S10

Antec®

ENCLOSURES

DESIGNED TO INSPIRE

The full tower S10 is the flagship case of the Signature Series by Antec, a new family of chassis characterized by a patent pending internal architecture featuring an innovative Central Air Intake System and easy expandability with a striking, yet refined, exterior design. The exclusive Three Chamber Design separates the enclosure into three thermal zones, providing clear airflow paths and efficient cooling to all of your components quietly. Seven (7) pre-installed fans plus one optional fan mount combine with support for top, center, and rear radiators to showcase the ample cooling options available in the S10. Ten (10) PCI-E slots and fourteen (6 HDD, 8 SSD) tool-less drive bays make building a high-performance system a simple process. Finished with a smooth front bezel and Opposing Brushed Aluminum Doors, the S10 provides performance, security, and style for any computer system.

Elite builds start with the right chassis – the S10 Signature Series by Antec





Innovative Air Intake

The unique Center Air Intake runs from alongside the Motherboard Chamber and the Power Supply Chamber, providing airflow to the components that generate the most heat.

SPECIFICATIONS:

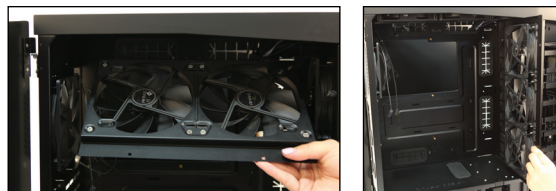
- **14 drive bays:**
 - 6 x Quick Release tool-less 3.5" Bays
 - 8 x Quick Release tool-less 2.5" Bays
- **Motherboard support:**
 - Mini ITX / Micro ATX / Standard ATX / XL-ATX/E-ATX (up to 12" x 13")
 - 10 PCI expansion slots
- **Chamber dimensions:**
 - Hard Disk Drive Chamber: 5.51 in (W) x 7.87 in (D) x 18.11 in (H)
 - Motherboard Chamber: 14.76 in (W) x 7.08 in (D) x 17.51 in (H)
 - Power Supply Chamber: 15.15 in (W) x 8.07 in (D) x 4.01 in (H)
- **Maximum graphics card size:** 13.5" (343 mm)
- **Maximum CPU cooler height:** 6.5" (165 mm)
- **Cooling System:**
 - 2 x 140 mm top exhaust fans (Motherboard Chamber)
 - 3 x 120 mm intake fans (Motherboard Chamber)
 - 1 x 120 mm rear exhaust fan (Motherboard Chamber)
 - 1 x 120 mm exhaust fan (HDD Chamber)
 - Optional - 1 x 120 mm intake fan (PSU Chamber)*
- **Side Panels**
 - 4 mm thick Anodized, Brushed Finish Aluminum Doors
- **Water cooling support - Motherboard Chamber:**
 - Top:** 240 / 280 mm radiator
 - Center:** 240 / 280 / 360 mm radiator
 - Rear:** 120 mm radiator
- **Intake Filters:**
 - 1 x Central Intake
 - 1 x Hard Disk Drive Chamber Intake
 - 1 x Power Supply Chamber Intake
- **Front I/O ports:**
 - 4 x USB 3.0
 - Power / Reset Button
 - HD Audio In and Out
- **Unit Dimensions:**
 - 23.7 in (H) x 9.1 in (W) x 23.3 in (D) / 602mm (H) x 230mm (W) x 590mm (D)
- **Package Dimensions:**
 - 28.2 in (H) x 13.4 in (W) x 27.2 in (D) / 715 mm (H) x 340 mm (W) x 690 mm (D)
- **Net Weight:** 45 lb / 20.42 kg
- **Gross Weight:** 49 lb / 22.23 kg



- Motherboard Chamber
- Power Supply Chamber
- Hard Disk Drive Chamber

Three Chamber System

Isolating the enclosure into three distinct chambers allows maximum airflow with minimal fan noise



Optimized Cooling

Designed for high-performance system builds, the S10 features seven fans (plus one optional mount) and support for 240/280 mm top, 240/280/360 mm central, and 120 mm rear-mounted radiators.



High Performance

Quad-SLI ready plus 10 PCI-E slots for up to four 13.5" PCI-E graphics cards



Hassle-Free Maintenance

Quick-release washable air filters slide out effortlessly and dedicated filters for each chamber make managing a dust-free system quick and simple.