



## Intuitive, Organized and Fully Redundant

Franchise owners are a unique breed. They come with a distinct knowledge-base within their concept and have specific benchmarks for success and reporting to the Franchisors. Bevo POS, not coincidentally, was designed for franchise owners by a franchise owner, because what had been available couldn't meet these needs in the format desired. As the foremost franchise POS, it is intuitive, organized, and fully redundant, syncing real-time, between and among terminals and optionally with the cloud as well. Therefore, it is guaranteed to continue functioning regardless of internet connectivity or server failure, without loss of data.

## A Complete Solution

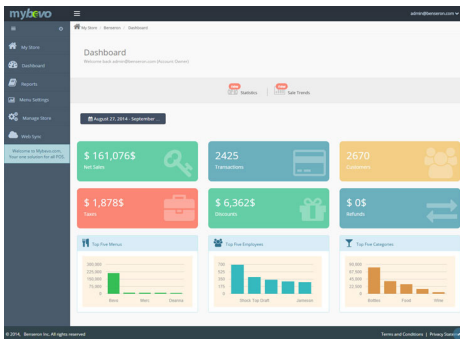
- EMV, NFC options provide the new standard of credit card acceptance.
- Seamless Integration with Apple Pay.
- Merging checks, transferring tables and splits by check or seat can be done in a few clicks.
- Intuitive, organized, and fully redundant, syncing real-time, between and among terminals and with the cloud.
- All terminals can be used for all jobs, from menu changes and bar orders to data analytics.
- Data analytics effectively presented in dashboards are in-depth and can be customized to even finer detail if needed.
- Bevo POS offers full integration with online ordering, increasing profits and exposure.
- Seamlessly integrates loyalty programs and gift cards.
- Ensures complete protection against power-outage/surge without loss of data.



## BEVO POS Features

BEVO Point-of-Sale solutions helps you address every customer service and management need in your restaurant. It represents the industry's best platform for speed of service, reliability, performance and value. Bevo POS instantly delivers orders to the kitchen's printer and display, can create combo menu items, time-specific specials (early-bird), efficient order entry, error-free recall, and effective tender on the order screen, resulting in better quality control and happy customers.

### Dashboards



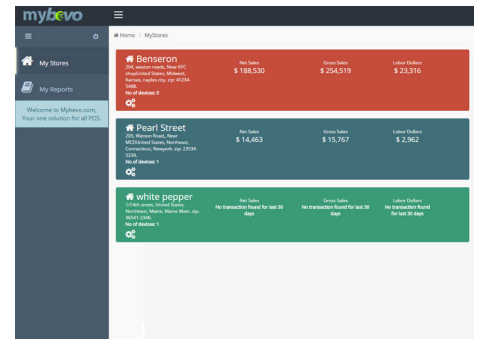
Restaurant owners can monitor real-time and historical sales data. Get an alert if a location exceeds discount or void maximums. Allocate labor based on transaction and customer numbers. Provides the necessary data to make decisions and plan accordingly.

### Reports Menu



Restaurant owners can view all reports quickly including historical sales for select time periods (yearly, quarterly, monthly, and daily) for their location. Monitor voids, discounts, the most popular items and employee sales from this snapshot.

### Quick Stats



Quick-stats is designed for franchisees and restaurant owners who own more than one location. Compare all basic stats, net sales, gross sales and labor dollars for all stores. This helps determine how to allocate labor or inventory from one snapshot.



### Apple Pay

Apple's mobile wallet app on iPhone and iWatch for convenient, secure, contactless payment with the credit card of your choice and our NFC card reader.



### EMV

EMV is the global standard for card security. Established in Europe, it's slowly making its way to the U.S. We are adopting it immediately for use with our EMV card readers for the highest level of data protection for cardholders and business owners.

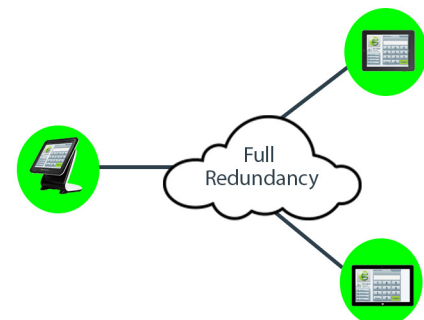


### NFC

Mobile wallets such as Apple pay and Google wallet require NFC readers to process payment. We've adopted these technologies within our system to offer an additional layer of security for credit card protection.

### Full Redundancy

The only fully-redundant POS on the market. All terminals communicate with one another within the network and with the cloud, real-time, so every machine is always current, store-wide. If one machine freezes, all others continue to operate normally including all pending transactions. No down-time, no restarting.



# Outstanding Performance • Reliable • Fully Redundant • No Down-time • 24/7 Support

## Display Terminal

Ultra-modern with Customer Facing Display and Credit Card Swiper



## Zebra Label Printer

Perfect Labels, Every Time



## Windows Tablet

BEVO's 7" or 10" Windows Tablet with Credit Card Swiper



## Scanner

Light weight, automatic activation when hand held and stationary



## Stainless Steel Cash Drawer

Durable and Dependable Cash Drawers Made of Stainless Steel



## Caller ID

Caller ID Integrated POS



## Kitchen and Receipt Printers

Uncompromising Performance



## Kitchen Display

Kitchen Display for Order Processing and Monitoring in Kitchen



## Electronic Scale

Electronic Scale Provides Precise Measurements Day After Day



## Comprehensive Reports

### Sales Reports

- Sales Recap
- Close the Day
- Department Sale
- Category Sale
- Sub-Category Sale
- Menu Item Sale
- Category
- Sub Category
- Menu Item
- Modifier Sale Report
- Cashier Report
- Hourly Sale Report
- Daily Sale Report
- Shift Report
- Sales Receipt Report
- Sales Reconciled Report

### Void Reports

- Voids by Employee
- Voids by Node

### Refund Reports

- Disc by Employee
- Disc by Node

### Gift Cards

- Gift Card Sold
- GC Redemption

### House Accounts

- House Account Sold
- H/A Redemption
- H/A Statement

### Employee

- Payroll History
- Payroll Weekly
- BiMonthly Payroll
- Employee Tips Report
- Attendance Report
- Labor By Job Code
- Labor By Employee
- Employee Sale

### Batch Process

### Paid In/Out

### Membership

- Membership Tender
- Membership Current Balance
- Membership Activity Details
- Membership Sales Report

Always Easy. Always On.

# Bevo POS Features

## Messaging:

Allows management to send messages to staff  
Print message on default receipt printer

## Menu:

Allows for item cost  
Allows for modifiers  
Allows for categories  
Allows for item SKU  
Allows for items sold by weight (peripheral scale required)  
Allows for special request notation  
Allows for modifiers to print in red on kitchen printer  
Allows for enable/disable an item w/o deleting  
Add menu item/edit menu item without system reboot  
Allows for printer selection (e.g. bar printer vs kitchen printer)  
Allows for combo discounts (automatic and manual)

## Employee Management:

Employee logon/logoff using PIN entry  
Manager logon/logoff using magnetic stripe cards  
Employee personnel information management  
Employee security privileges:  
Pre-defined levels of functions permitted  
Assign permissions per employee  
Employee job assignment with base pay and overtime pay  
Employee shift clock-in/clock-out  
Management time clock override  
Captured tips - total captured for transactions processed by shift  
Tip declaration - cash tips  
Employee performance graphs

## Table Management:

Create restaurant sections (i.e. dining room, patio, bar)  
Table map  
Allows unique table names  
Seating positions  
Transfer tables  
Merge tables  
Color coded table status

## Orders:

Order type assignment (dine-in, carryout, delivery)  
Bar tab  
Ticket discounting:  
Manual - discounting applied manually per ticket  
Manual - discounting applied manually per line item  
Automatic discounting applied for specified items or amounts during specified times (e.g. happy hour pricing)  
Discounts offered % and \$ off  
Line Item void with reason code  
Cash supported  
Credit card supported  
Native gift cards  
Check (no integrated check service)  
Customize tender types (i.e. house account)

Multiple sales tax settings  
Automatic gratuity  
Remove tax from order  
Print item detail before payment type for table service - guest check  
Split tickets  
Split line item  
Combine tickets  
Multiple tender types allowed per order  
Ticket transfer - use this feature to transfer tickets between servers/bartenders  
Ticket naming  
Fast cash option  
Filter orders by current day open/closed/voided/future tickets  
Preview ticket  
Guest check  
Transaction receipt  
Repeat Item  
Online ordering  
Preauthorize bar tabs without holding customers' credit cards  
Coursing on the order screen and kitchen ticket

## Device Support:

Maximum number of workstations  
Receipt printer support (usb, serial, ethernet)  
Order printer support (serial, ethernet)  
Cash drawer support per workstation (must have printer connected)  
Pole display  
Customer rear LCD display  
Electronic scale  
Kitchen video display  
Bar code scanner

## Other Features:

Pay at the table  
Customer management  
Offline mode  
Remote software updates  
Countdown item  
Export and email reports  
Tablet option iPad, iPhone  
Server - node redundancy  
Cloud integration  
QuickBooks export integration  
Ability to select date ranges for any report  
Loyalty and reward  
Central gift card

## Support:

End user support available 24/7  
Hardware hot swap with active support contract

Manage. Profit. Grow.

**bevo pos**

6201 Lee Ann Lane, Naples, FL 34109  
800-785-6012  
www.bevopos.com



Apple Pay



EMV



NFC