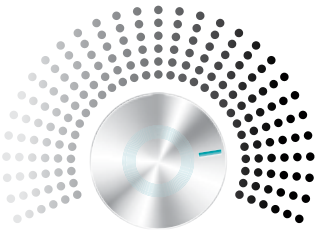



ECUBE 15 EX
Confident Diagnosis, Confident Decisions



Optimal Imaging Suite™ Image Quality Enhancements

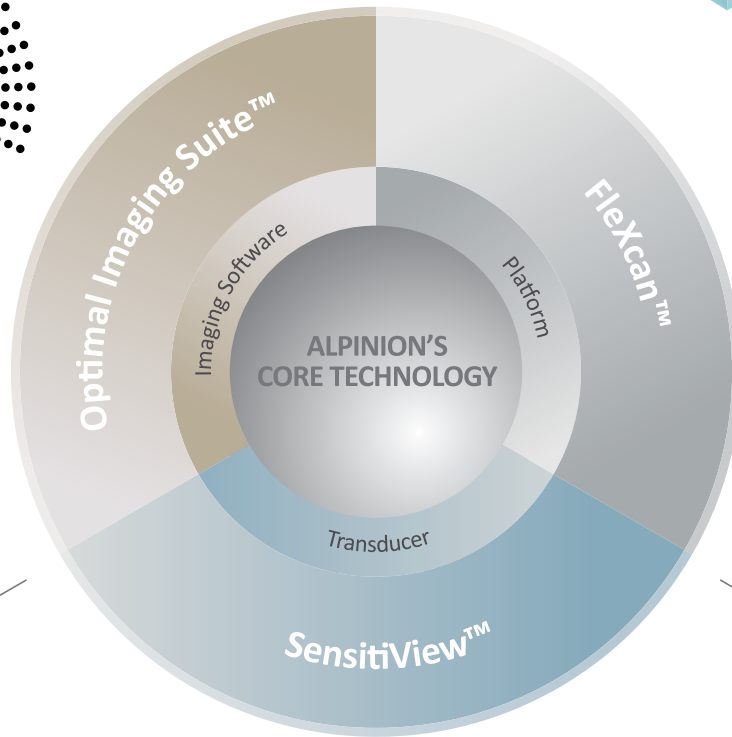
Optimal Imaging Suite™, ALPINION's integrated image post processing software set, provides better border definition and increased contrast resolution by reducing artifacts while maintaining true tissue appearance.



FleXcan™

Easy upgrade with new technology and features

FleXcan™, ALPINION's software based imaging platform, is the foundation of the E-CUBE. It allows us to remain responsive to customer needs as well as user's system up to date with reliable performance and improved productivity during the lifetime of the product.

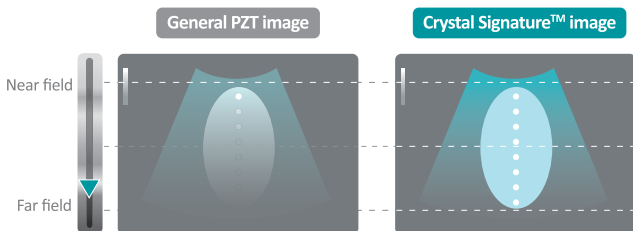


SensitiView™

Deep penetration without sacrificing high resolution

Crystal Signature™

Greater sensitivity, Wider bandwidth, Higher resolution



CSA™ (Clear Signal Amplifier)

Rx Signal Amplifier boosting sensitivity

Low loss cable

A low loss cable enables the Rx signal to travel further

Matching network

The perfect impedance matching of the transducer and system

Versatile and Perfectly Fine-tuned

The E-CUBE 15 EX provides progressive and versatile diagnostic solutions with exceptional performance and excellent image quality that enhance diagnostic confidence.

The E-CUBE 15 EX offers extensive shared service capabilities for vascular, cardiac, abdominal, pediatric/fetal, musculoskeletal, urology, prostate, and Ob/Gyn practices.

The E-CUBE 15 EX minimizes complications, raising the level of confidence when clinicians conduct examinations.

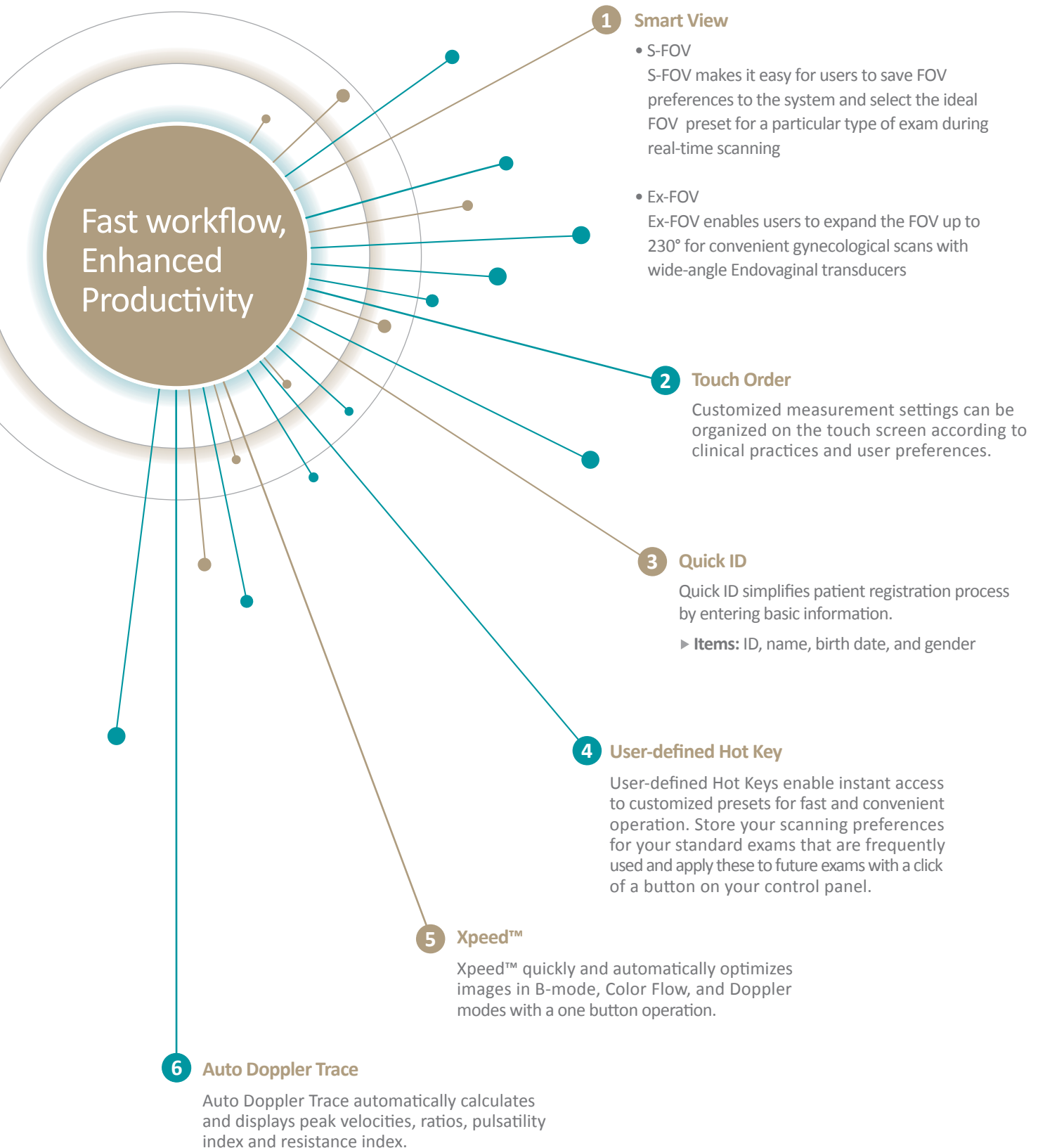
The E-CUBE 15 EX is fully geared to an exceptional performance in any clinical environment.



※ Standalone clinical images may have been cropped to better visualize pathology.

Entirely New Level of Workflow

The E-CUBE 15 EX adds user value in each phase of daily practice from clinical review to diagnostic confirmation. The E-CUBE 15 EX's efficient workflow increases exam efficiency by reducing the number of tasks per exam and enables users to focus on caring for the patient and acquiring high-quality images.



Ergonomic Superiority

The E-CUBE 15 EX's user-oriented system and transducer design fulfills the ultimate comfort for the users as well as patients.

19.5" Wide LED Monitor



Super Responsive Touch Screen



Auto Lift Control Panel



MicroFit™ Transducer



Built in Gel Warmer



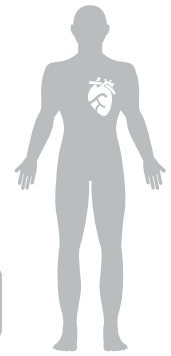
Wide Foot Rest



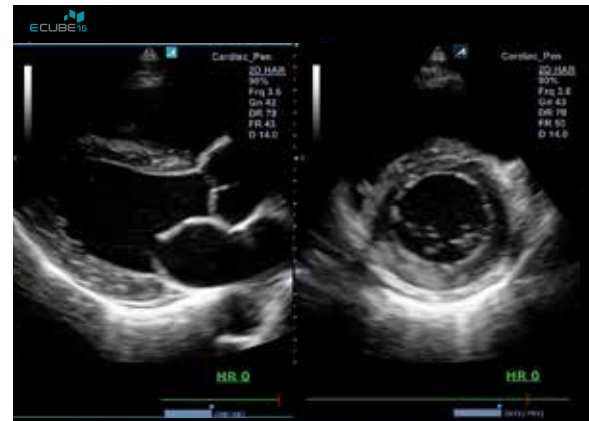
Imaging performance with advanced features

Cardiovascular

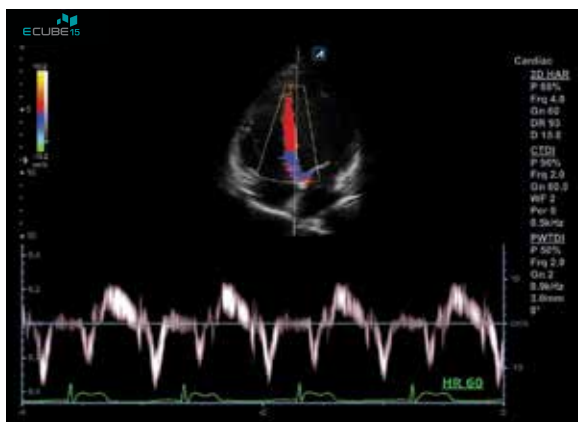
- Enhanced visualization of structures, clear depth perception, and color sensitivity
- Comprehensive cardiac measurement and analysis package



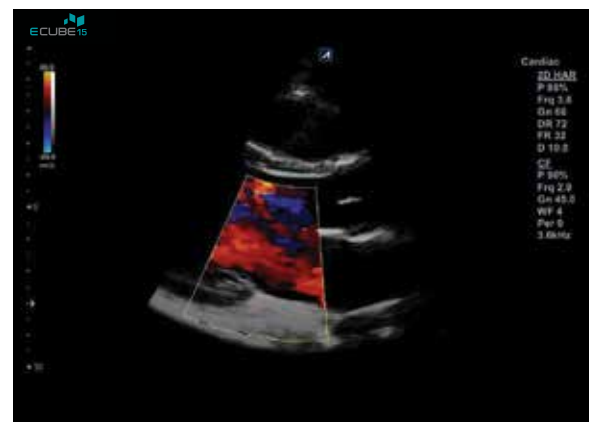
Apical 4 chamber view in harmonics for excellent axial and lateral resolution.



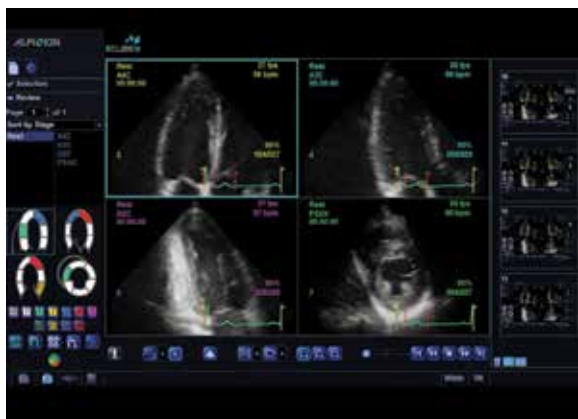
High resolution 2D imaging demonstrating excellent contrast resolution in the Dual mode with MP1-5X



PW in Tissue Doppler imaging displaying a sharp and clear spectrum helps users to evaluate myocardial movement.



Color flow in Mitral valve with temporal and spatial resolution.



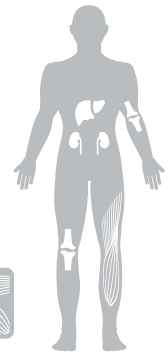
Stress Echo package is fully streamlined with user-defined protocols for efficient workflow.



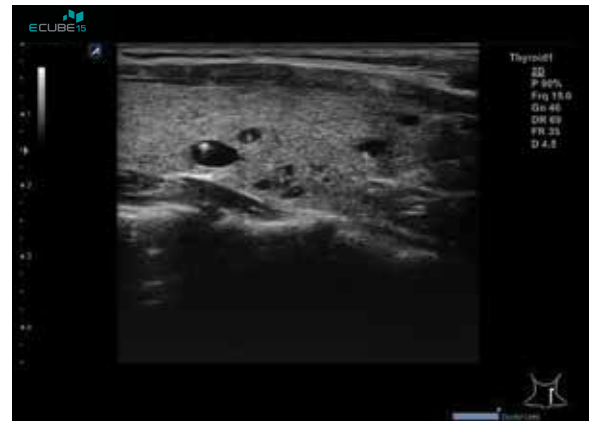
CUBE Strain™, a strain imaging software, allows physicians to assess myocardial movement in either qualitative or quantitative measurement.

General Imaging & Small Parts

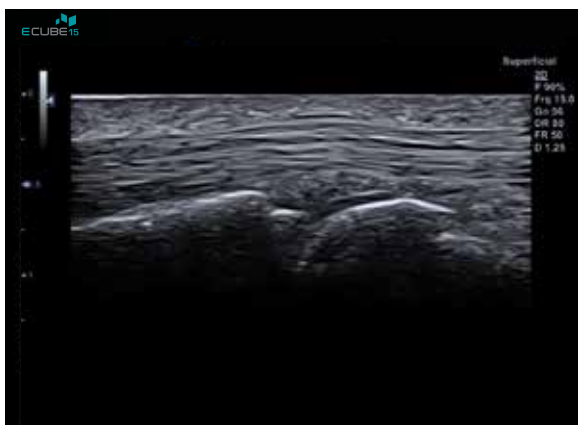
- Unparalleled image quality in B-mode, Color Flow, and Doppler modes
- Crystal Signature™ transducers to help increase penetration and deliver a high definition resolution



Tissue Harmonic Imaging(FTHI) of Liver in the Live Dual mode with Crystal Signature™ Transducer, SC1-4HS



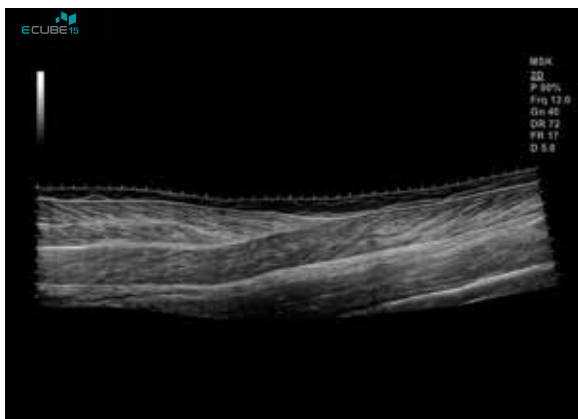
Thyroid cyst using extreme fine-pitched transducer (L8-17X) visualizes clear nodular tissue with better contrast resolution.



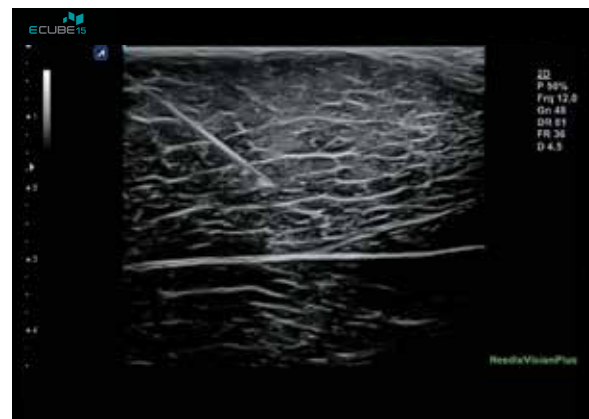
Tendon at the MCP joint image with IO8-17 displaying the clarity and excellent definition in superficial areas



Power Doppler to help detect blood flow in the Testicle.



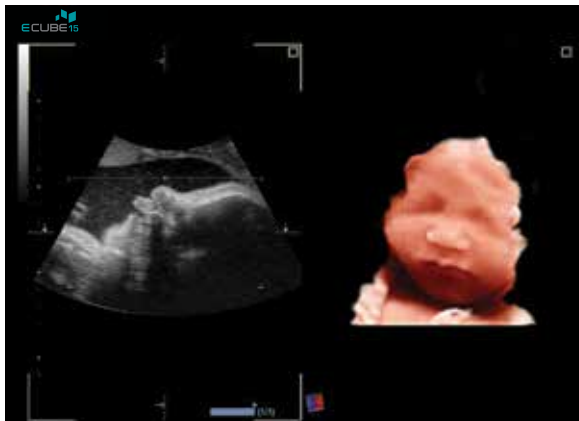
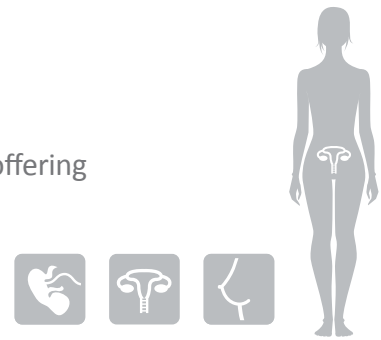
A single panoramic image with extreme fine-pitched linear transducer (L3-12X) provides a larger reference image up to 60cm with spatial relationship of structure.



Needle Vision™ Plus providing better visualization of a needle tip and shaft with Beam Steering technology

Women's Health

- Advanced 3D/4D rendering engine (Volume Master™ and LIVE HQ™) offering excellent details of fetus
- High performance, lightweight Crystal Signature™ volume convex transducer for volume acquisitions



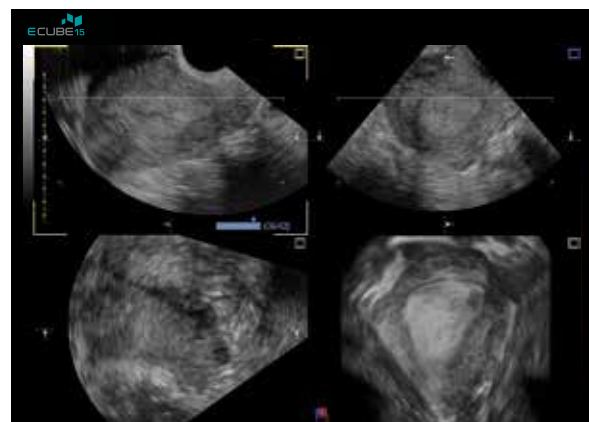
LIVE HQ™ using Crystal Signature™ volume transducer (SVC1-6H) generates realistic images of fetus.



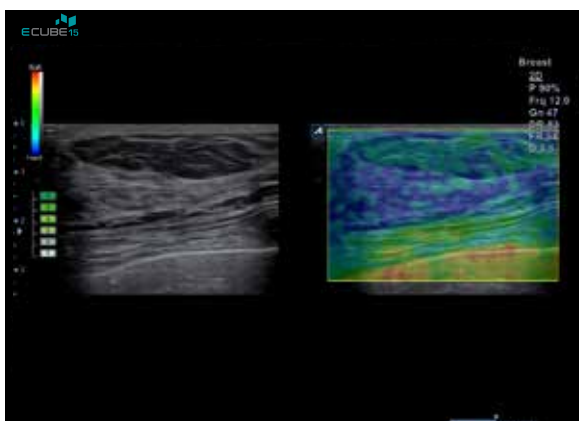
Aortic arch with the excellent spatial sensitivity of color Doppler



Sequential images of Lateral ventricle with MSV (Multi Slice View)™.



Multi-planar Rendering view demonstrating an endometrial cavity



Color Elastography map showing the gradations of stiffness relative to the surrounding tissues in the Breast



Outstanding contrast resolution with the new wide-angle Endovaginal transducer up to 230°

Transducer Selection

The E-CUBE 15 EX transducers with ergonomic benefits help you achieve extraordinary images. With advanced engineered E-CUBE 15 EX transducers, you can feel confident across a broad range of applications.



Fast Repair



Low Maintenance Cost



Best Compatibility



Reliable Quality by Multi-level Quality Management

Developed and manufactured by **ALPINION** for unrivalled acoustic performance

Transducer Guide

Convex



SC1-6H *
High density Single Crystal

- OB, GYN, Fetal Echo, Abdominal, Renal, Emergency Medicine



SC1-4HS
Wide-angle high density Single Crystal

- Abdominal, Renal, OB, GYN, Fetal Echo, Emergency Medicine



SC1-4H *
High density Single Crystal

- Abdominal, Renal, OB, GYN, Fetal Echo, Emergency Medicine

Linear



L8-17X
Extreme high density, 58.2mm wide aperture

- Carotid, Peripheral Vascular, Thyroid, Testicle, MSK(Superficial) Breast, Emergency Medicine



L3-12X *
Extreme high density, 58.2mm wide aperture

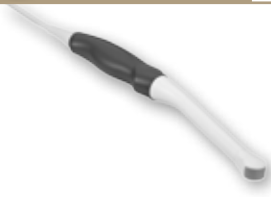
- Carotid, Peripheral Vascular, Thyroid, Testicle, MSK, Breast, Emergency Medicine



L3-12H *
High density Single Crystal

- Carotid, Peripheral Vascular, Thyroid, Testicle, MSK, Breast, Emergency Medicine

Endocavity



EV3-10X *
Extreme high density, wide angle FOV (Max 230°)

- GYN, OB, Fetal Echo, Emergency Medicine



EC3-10X *
Extreme high density, wide angle FOV (Max 230°)

- GYN, OB, Fetal Echo, Urology, Emergency Medicine



EV3-10H *
High density

- GYN, OB, Fetal Echo, Emergency Medicine

Phased Array



MP1-5X
Extreme high density Multi-active layer

- Cardiac, Abdominal, Renal, TCD, Emergency Medicine



SP1-5X
Extreme high density Single Crystal

- Cardiac, Abdominal, Renal, TCD, Emergency Medicine



SP3-8
Single Crystal

- Abdominal, Cardiac, Emergency Medicine

Developed and manufactured by ALPINION
for unrivalled acoustic performance



Volume Convex



C5-8N
Micro convex

- Pediatric, Cardiac, Vascular, Emergency Medicine



C5-8
Micro convex

- Pediatric, Cardiac, Vascular, Emergency Medicine



SVC1-6H
High density volume Single Crystal

- OB, GYN, Fetal Echo



L3-8 *
Low frequency with the greater depth of penetration

- Peripheral Vascular, MSK, Emergency Medicine



IO8-17
High frequency hockey stick

- MSK(Superficial), Small Parts, Superficial Vascular



IO3-12
Intraoral

- Salivary gland, Parotid gland, Submaxillary gland, Small Parts, MSK, Peripheral Vascular, Emergency Medicine

Volume Endo



EC3-10H *
High density

- GYN, OB, Fetal Echo, Urology, Emergency Medicine



E3-10H
High density

- GYN, OB, Fetal Echo, Urology, Emergency Medicine



VE3-10H
High density

- GYN, OB, Fetal Echo, Urology, Emergency Medicine

Pencil Typed



CW5.0
Pencil typed transducer

- Cardiac



CW2.0
Pencil typed transducer

- Cardiac

TEE



TEE3-7
TEE transducer

- Cardiac, Emergency Medicine

* A biopsy kit is available.

※ Certain transducers may not be available for use in some countries.



Real Time Customer Service

NETCUBECARE™

ALPINION's E-CUBE system can be accessed by Net CUBE CARE™ service anytime for the efficient troubleshooting of system software. Net CUBE CARE™, ALPINION's unique network-based remote service, efficiently upgrades the E-CUBE system based on customer needs by accessing and upgrading software. ALPINION's Net CUBE CARE™ customer service is optional - please contact the ALPINION customer service team at service@alpinion.com for further inquiries.

ALPINION MEDICAL SYSTEMS

Verdi Tower, 72, Digital-ro 26-gil, Guro-gu, Seoul, 152-848, Korea
Homepage : www.alpinion.com
E-mail : international@alpinion.com
TEL : +82-2-3282-0900
FAX : +82-2-851-5591

Standalone clinical images may have been cropped to better visualize pathology.

Copyright©2015 ALPINION MEDICAL SYSTEMS Co., Ltd. All rights reserved.
Catalogue contents may be partly changed without prior notice to customers due to performance enhancements.

MKT-E15EX-PC-T-E1506-02