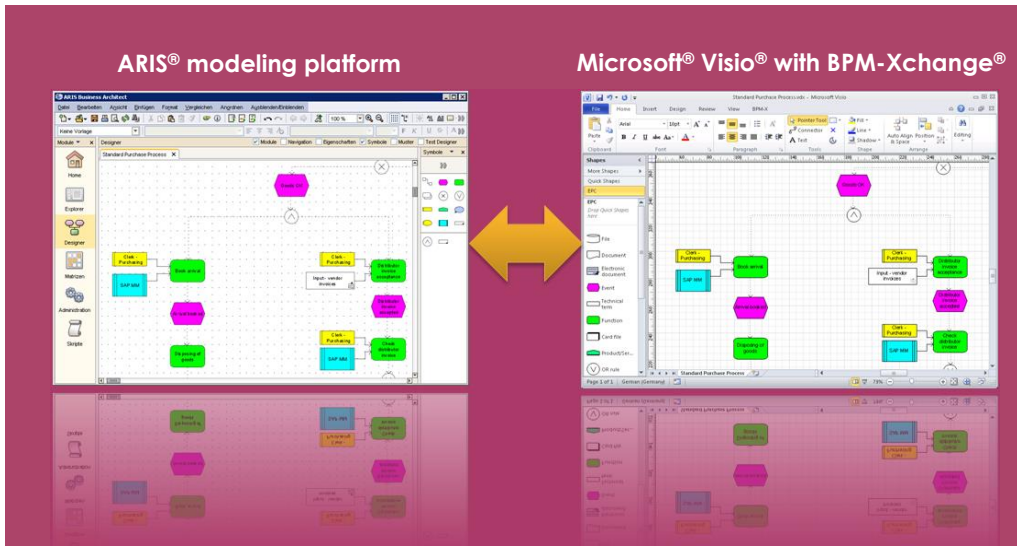


BPM-X solution for ARIS



You will learn how to

- Leverage your existing modeling landscape and investments in data while saving license and maintenance costs
- Use Visio® as a professional, ARIS®-compliant modeling tool
- Satisfy the needs of process owners, consultants, and analysts
- Build your own solution with a best-of-breed approach for a mixed environment using ARIS® together with Visio®

More flexibility for enterprise analysis and modeling

Enterprise architecture (EA) and business process management (BPM) is a collaborative corporate effort and involves different types of users. Process owners, consultants or business analysts mostly favor easy-to-use tools for e.g. processes mapping for managing changes. Enterprise architects and process engineers may prefer more complex modeling suites like ARIS®.

BPM-Xchange® is an enterprise integration, modeling and analysis suite which offers the accessibility and familiar comfort of Microsoft® Office Visio® aligned with strong methodical controls and modeling safety

typically found only in much more costly tools. Apart from that, the BPM-X Designer seamlessly integrates with Microsoft® SharePoint® technology and offers an optional model repository and comes at a highly competitive price.

Flexibility and real openness make BPM-Xchange® an attractive choice for many enterprise management initiatives.

“How to have more acceptance and lower modeling costs?”

Benefits of using BPM-Xchange® together with ARIS®

There are a number of good strategic and economic reasons to consider BPM-X Designer.

Strategic advantages

- Have satisfied users and simplify your project lifecycle.
- Enhance the acceptance for your initiative by including business users and process owners.
- Boost your productivity as a result of increased usability for process modelers.
- High level of conformity with respect to modeling standards (e.g. BPMN™, ARIS®

method, VAC, EPC, FAD etc.).

- Support for Microsoft’s cloud offerings (Azure™, Office 365™)

Economic profits

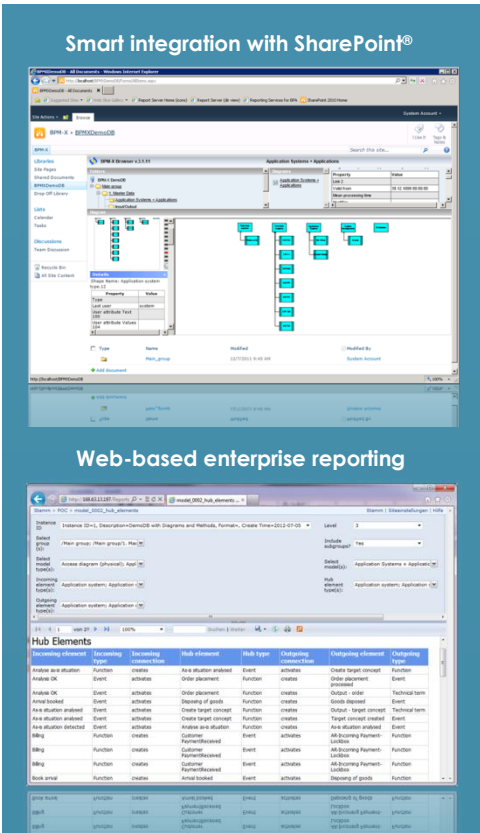
- Optimize your license fee structure and maintenance efforts by using enhanced Visio® for professional modeling and process mapping.
- Lower training and support costs.
- Optimize your TCO for ARIS®-based enterprise management landscapes.
- Attractive pricing even for small budgets.



“The BPM-X solution significantly reduces your license and maintenance costs but also secures more buy-in from your business users compared to an ARIS®-only solution.”

BPM-X GmbH

Germany: +49 (6301)703-278
 Intl./US: +1 (408) 916-1189
 Sauerwiesen 2
 67661 Kaiserslautern, Germany



Use cases: The BPM-Xchange® -ARIS® solution

BPM-Xchange® allows you to build scalable EA and BPM solutions: starting with Visio® on a consultant's notebook up to a full-blown enterprise repository with governance workflows, versioning, and analysis tools.

Export the ARIS® database to Visio®
Often project deliverables have to be created in Microsoft® Visio® format. The data can be exported from ARIS® by simply using the standard ARIS® XML export which creates an ARIS® markup language XML file. BPM-Xchange® reads this file (and some configuration data describing the modeling conventions) and creates the Visio® files on-the-fly with the ARIS® look & feel and folder structures.

Migrate from legacy Visio® to ARIS®
BPM-X's strong conversion engine transforms any model formats like Visio® into the ARIS® format much better than native ARIS® does. While converting the data, the clever engine translates the ARIS® conventions into a Visio® stencil. The result is the harmonization of model data from different diagram types into ARIS® standards.

Employ Visio® as a smart front-end
When using the BPM-X Designer plug-in, Visio® is extended for full modeling support. It understands ARIS® object definitions, occurrences, all data attributes, model assignments and drill-downs, multiple content languages, method language, model types like BPMN 2.0, and any kind of ARIS® model types including swim lane-based ones. BPM-X pushes Visio® to the level of a professional modeling tool without changing the spirit of Visio®.

Process bi-directional integration
With BPM-X's powerful integration capabilities, Visio® can be seamlessly linked with ARIS®. Data is mirrored from ARIS® to Visio® and back.

Publishing ARIS® data to open formats
It is convenient to use BPM-X for the publishing of ARIS® data with HTML, SharePoint® or web-based reporting.

Replace ARIS® by the BPM-X solution
ARIS® is fully replaced by using the BPM-Xchange® enterprise repository based on SharePoint® and Microsoft® SQL Server®.

Products used to build solutions

BPM-X delivers turnkey solutions for quick deployment in the client's tool landscape off the shelf; it optimizes business value with low project risk and TCO. Manifold solution scenarios can flexibly be built with BPM-X software components:

- **BPM-X Designer** for professional modeling compatible with ARIS® formats, standards, and conventions.
- **BPM-X Converter** as software bridge to build migration and integration scenarios with ARIS® and Microsoft® tools.
- **BPM-X Browser** for publishing model data to intranets using plain HTML or optionally SharePoint® document libraries.
- **BPM-X Administrator** to manage modeling conventions such as ARIS® filters, based on our open meta-model.
- **BPM-X Reporting Services** for web-based and office integrated, professional enterprise reporting of model data.
- **BPM-X Repository** based on SharePoint® and MS SQL for optionally setting up a professional enterprise repository.

Technology

BPM-X Designer supports® Visio® 2010, 2013 running on Microsoft® Windows® 7, 8. As back-end software SharePoint® 2010, 2013, MS SQL 2008, 2012 and Windows® 2008 R2, 2012 Server are supported.

License model

For every Visio® user a named BPM-X Designer license is needed. Other products have specific license models.

Legal notice: The product names used in this document are for identification purposes only. All trademarks and registered trademarks are the property of their respective owners. The following trademarks may or may not be marked in this document: ARIS is a trademark or registered trademark of Software AG in Germany and in many countries all over the world. BPMN is a trademark of the Object Management Group Inc. in the United States and/or other countries. BPM-Xchange is a trademark or registered trademark of BPM-X GmbH in Germany and/or other countries. Microsoft, Azure, Office 365, SharePoint, Visio and Windows are trademarks or registered trademarks of Microsoft Corporation in the United States and/or other countries. Oracle is a registered trademark of Oracle and/or its affiliates. Other company, product, and service names may be trademarks, registered trademarks, or service marks of other owners.

