



EIDETIC**MARKETING**
engraving your brand to memory

EIDETIC NEURONS

9258 Hall Road, downey 90241

UNITED STATES
OPERATING

24 HOURS IN
04 CITIES

EVENT EXECUTED PER YEAR

127

CITIES CONQUERED

17

ATTENDEES OF EVENTS

3 MILLION
/ YEAR AVERAGE

DISTANCE TO LA FROM SEOUL ➤

5,956 MILES

1308 - 26 Liga square, 613

SOUTH KOREA

CREATIVE MORNING ⌚

MONDAY

PROJECTS PER YEAR

153

CAPABILITY

12 PPL

25 PPL

03 TEAM

MINUTES TO LA FROM SEOUL ➤

650 MINUTES

FACEBOOK IMPRESSIONS 

1,740 AND COUNTING

WORKING TIMES ⌚

10:00AM

UNTIL SATISFIED

ANNUAL MILEAGE OF BIZ TRIP ➤

71,472 MILES

FAVORITE BEVERAGES

ICED AMERICANO

FOUNDED YEAR

SINCE 2010

WORK HOURS PER DAY ⌚

14 HOURS

BIGGEST BOOTH SIZE

6,500 SQ. FT

TRUCKS SHIPPED PER YEAR

132

DESIGN DRAFTS PER PROJECT

AVG 05

WAREHOUSE MAX. HEIGHT

30 FT

BRANCH COUNTRIES

4 COUNTRIES

CORPORATE MOTO

EXECUTE !!

TOTAL SQ.FT OF EM EXPERIENCES

210,000 SQ.FT

CREATIVE MORNING

Great employee health benefits, vacation days, and travel incentives are not the only perks that keep our **Eidetic team** members happy and healthy. What truly keeps them going is the freedom to imagine and create that Eidetic Marketing offers all it's citizen's. **Every Monday morning**, all EM citizens are given the whole morning to explore and absorb their choices of bold ideas, enigmatic books, new places, engaging movies, provoking documentaries, etc. (**whatever that hungry creative part of their brain craves**). EM knows that the most bold and spectacular ideas come from people that have the freedom to imagine.

BUSINESS PARTNERS

30 COMPANIES

CRAFTSMANSHIP + MAGICIAN

It can be an industry norm for **structural designers** to go overboard with their imagination

and come up with designs that are unbuildable in reality.

But here at Eidetic marketing, no matter how extravagant the design, our master

"magicians" make things work! In some cases, they push the envelope of our world class

design team's creative capabilities instead of the other way around!

Now that is something to think about. Our teams of master craftsmen are truly forgers of

Eidetic experiences.



Global Presence

In this day and age of global markets, international connectedness, rate of information exchange at the speed of "viral," the world is truly getting smaller and smaller. We know that our clients' marketing needs travel the world just as much as those viral cat videos on youtube.

We saw this coming way before Eidetic Marketing was founded. That is why, we set up 4 strategically placed branches throughout the globe to be literally "just around the corner" from our clients' next big project.

• **U.S. Headquarter**
Los Angeles, California

• **European Office**
Berlin, Germany

• **Asia-Pacific Office**
Seoul, Korea

• **China**
Shanghai, China

Proven Program Management

Show Supervision

The supervision of a show depends on more than just the Installation and Dismantle. There are many more variables that could make or break an event. We cover that with responsible show supervision throughout the entire event from Move-in to Move-out (not just a visit during show-opening like many other agencies). "We don't outsource our responsibilities."

Strategic Creativity

Our team will custom-create all aspects of the event such as booth design, product placement, customer interaction, and leads to precisely fit the marketing objectives of our clients. "We don't just create aesthetically pleasing designs, we create strategic designs."

Customer Centric Service

We provide on-site supervision, on call availability, on-time progress reports, emergency relief, and step by step guidance through all client procedures. We go above and beyond for our clients.

Logistics

Our preferred network of partners enable us to offer logistics and storage options that are unrivaled in the industry in both performance and costs. We offer worry free solutions to all logistical needs.

Strategic Creativity



Service Offered at a Glance

On-line Promotion *aka ATL Marketing*

Smartphones, tablets, laptops, desktops, search engines, Facebook, Twitter, email, newsfeeds, Youtube, Instagram, Google...Yes, you get the point. More than half our lives are lived "Online." We have become a civilization of virtual connectedness. Today, everything is "shared online" from business proposals by emails to breaking news of celebrity mishaps by Facebook to mundane buzz of newly appointed politicians by hyperlink on a youtube video. It's a jungle out there, and Eidetic Marketing can be your safari guide to a safer and more elegant experience of marketing your brand through the most efficient methods and channels.



A. Online Marketing

- Newsfeeds/ Blogs/ Portals
- Social Media/ Media Advertisements
- Smartphone + Tablet Apps
- Social Media Games



B. Keyword Marketing

- Online Portals Search Booster
- Strategically Placed Ad Banners
- Blog / C'afe Partnership
- Email / Messenger



C. Viral Marketing

- Blogger Marketing
- Online Magazine Marketing
- Content Marketing
- Social Network Marketing



D. PR Services

- Awareness Generation
- Global PR Service
- General Consumer Relationship Mgmt.
- One on One PR

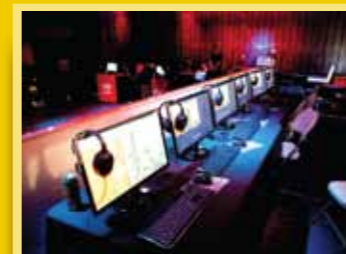
Off-line Promotion *aka BTL Marketing*

Sure, Online Marketing is the quickest way to stir awareness and create instant buzz for a brand. But, what happens after you start picking up speed? At Eidetic Marketing, our first and foremost passion is generating tangible results. When it comes to something "tangible," nothing beats face to face interactions. Yes, we are good at the "virtual," but our humble beginnings started with reality. Our Off-line Promotion Programs are unmatched in the industry and our core offerings are what makes them.



A. Exhibit Service

- Exhibit Design
- Program Management
- In-house Fabrication
- Show Service Management
- Logistics + Storage



B. Event Promotion

- Mobile(Guerrilla) Marketing
- Corporate Events
- Music + Live Event Sponsorships
- Product Launches
- Dealer Events



C. Retail Design

- Retail Interior + Exterior Design
- Integrated Aesthetics Branding
- Efficient Space Engineering



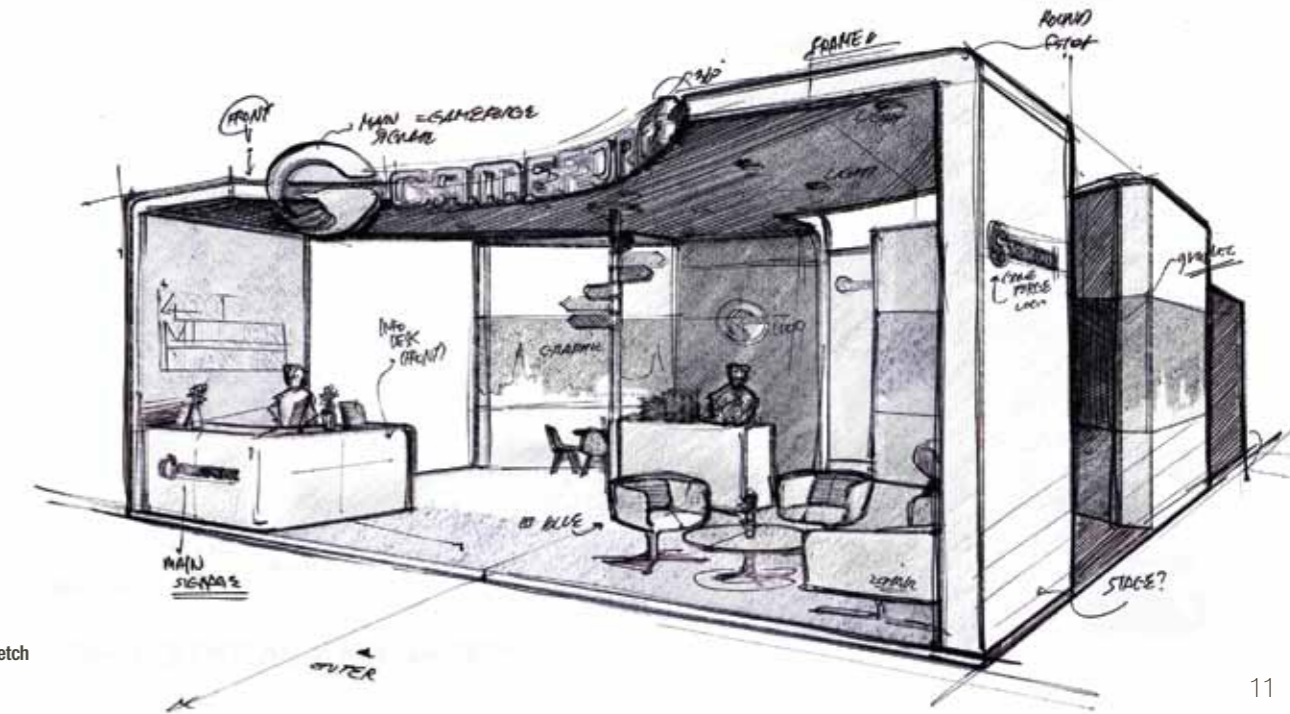
D. Interactive

- Environmental Projection Mapping
- Tablet / PC Apps
- 4D Environments
- A/V Solutions



Exhibit Solution

With our awarded team of creative designers and strategists, we spare no creativity and insight in coming up with tailored branding solutions that are both visually compelling and cost effective. We combine strategic analysis, creative finesse, and practicality to generate powerful branding solutions that stay consistent with the mission and identity of the client.



2013_GSTAR_GameForge_Sketch



Creative Solution

Marketing agencies are a dime a dozen, however what makes an agency great as opposed to mediocre are the creative energies that are infused into each and every aspect of the project. Whether it be interactive touch order tables for a restaurant, 4D theater for the entrance of an exhibit booth, branded interactive smartphone apps, or sound/holographic invitations for a dealer event, creativity is the prerequisite for each proposal at Eidetic Marketing.



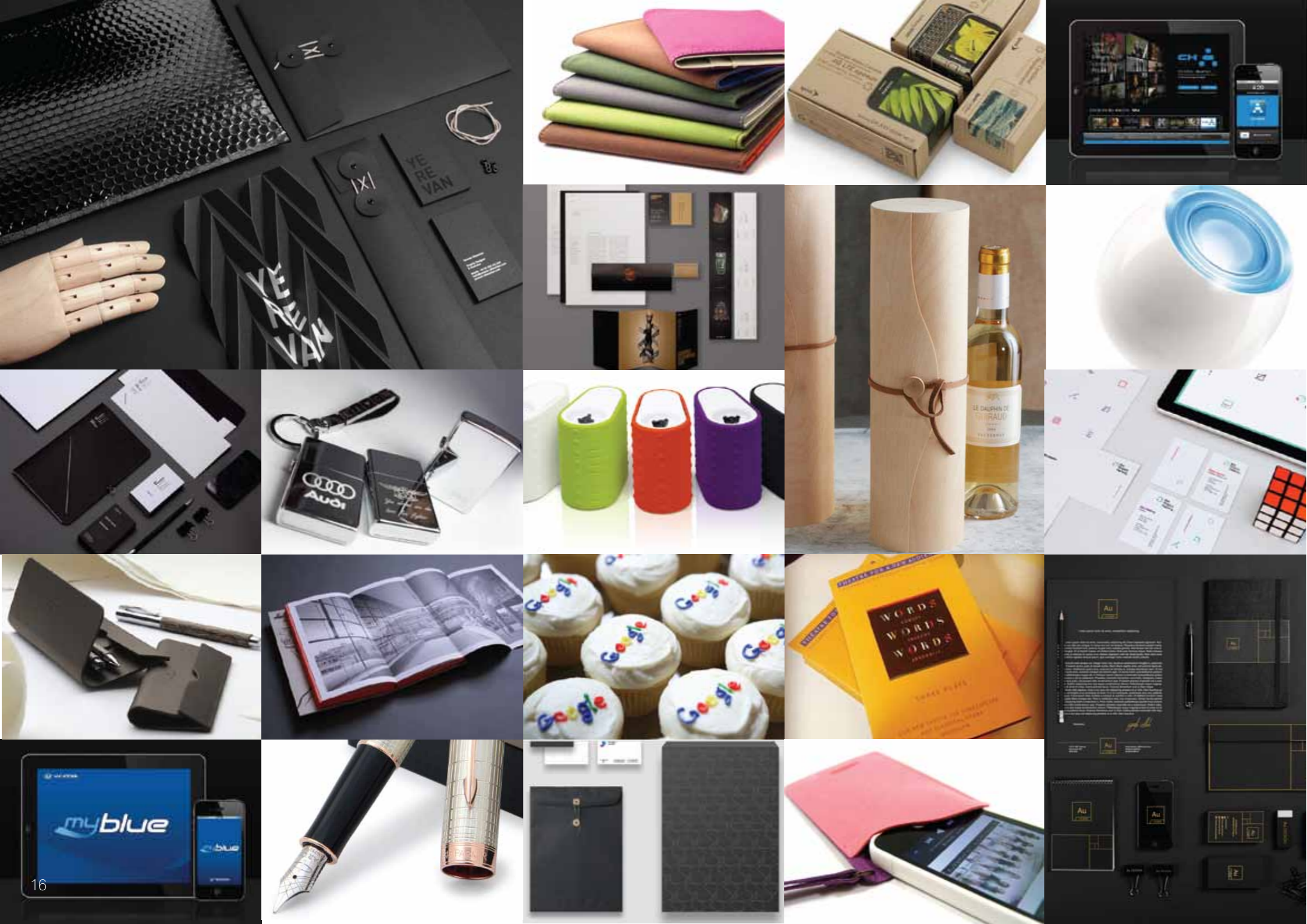
2013_BLE_Playstation_Rendering



Event Solution

With the clients' marketing objectives as the marker, we program events that get the message across. Whether it be a corporate event, convention, expo, tournament, or a mobile campaign, the event is bound to be an Eidetic experience.





Integrated Branding Solution

With our awarded team of creative designers and strategists, we spare no creativity and insight in coming up with tailored branding solutions that are both visually compelling and cost effective. We combine strategic analysis, creative finesse, and practicality to generate powerful branding solutions that stay consistent with the mission and identity of the client.

Brand Strategy Consultation

- Brand Concept Development
- Market Assessment
- Brand Analysis
- Feasibility Analysis

Brand Application Services

- Brand Logo Design
- Product Package Design
- Graphics Design/Production
- Advertising / Sponsorship
- Application Consultation

2010 Webzen Conceptual Drawing



2010 Webzen Conceptual Drawing



Unforgettable Experience

Interactive Solution

One of the most effective ways to produce lasting brand awareness is to generate stimulation through interaction. With our solid network of preferred partners in the industry, we offer the newest and most up to date solutions in "interactive marketing."



Diverse Global Clients

“Showing off? No. Being Appreciative? Yes.

We are very proud and grateful we have worked with clients in a wide spreading variety of industries.

It allows us to be more well-rounded individuals who don't boast but take pride in both educating and learning from our clients.”

WEBZEN

 **LG Electronics**

Hisense

MONEUAL

**SONY
PICTURES**

 **GAMEFORCE**

SKnetworks

Paramount

UBISOFT

ascom

DUOBACK

**Boston
Scientific**

**Red Bull
MEDIA
HOUSE**

NAVER

MINI

YAHOO!

DODGE

||||

Google

RCA

 **LG Hausys**

 **TheAppsGames**

mgame

ZALMAN

**wemade
entertainment**

GigaTera
beyond the light

 **Game Insight**

Bethesda

Panasonic

 **Oculus**