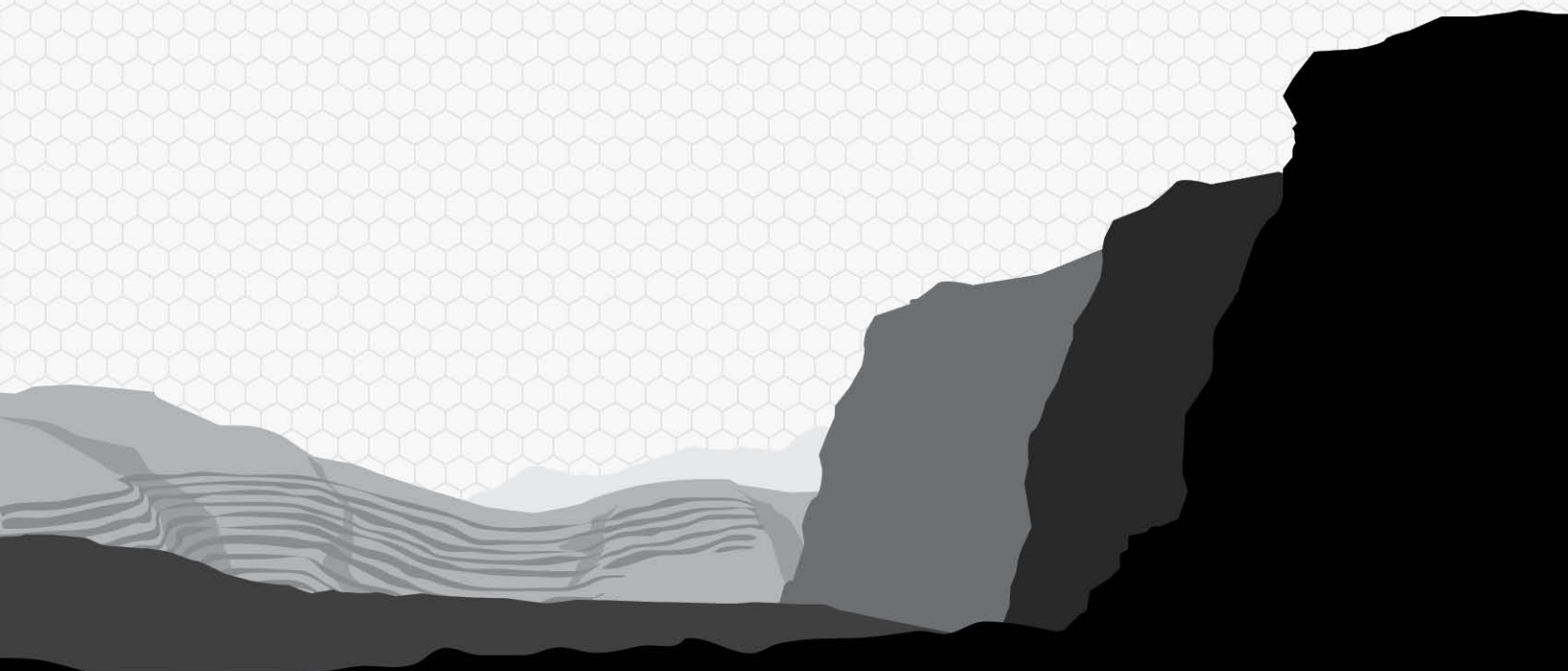


# FACE PROFILER

- + Overcoming Challenges
- + Complete Laser Packages
- + In-Field Calculations
- + Advanced Reporting



## Overcoming Challenges

LTI's Face Profiler Field Software calculates bench heights, minimum and optimum burdens, drill hole angles and offsets, hole depths and more—all for the perfect blast!

- Reduces production delays and increases safety with a quick and easy system
- Accurately measures profiles to minimize fly rock and vibration
- Meets MSHA documentation requirements that can be printed in the field



## Complete Laser Packages

Obtain highly accurate results in less time and for less money than any alternative measurement system on the market. These two lasers are extremely durable, rugged and waterproof.

### TruPulse® 200X

Calculates horizontal distance, height and 2-D missing line values.

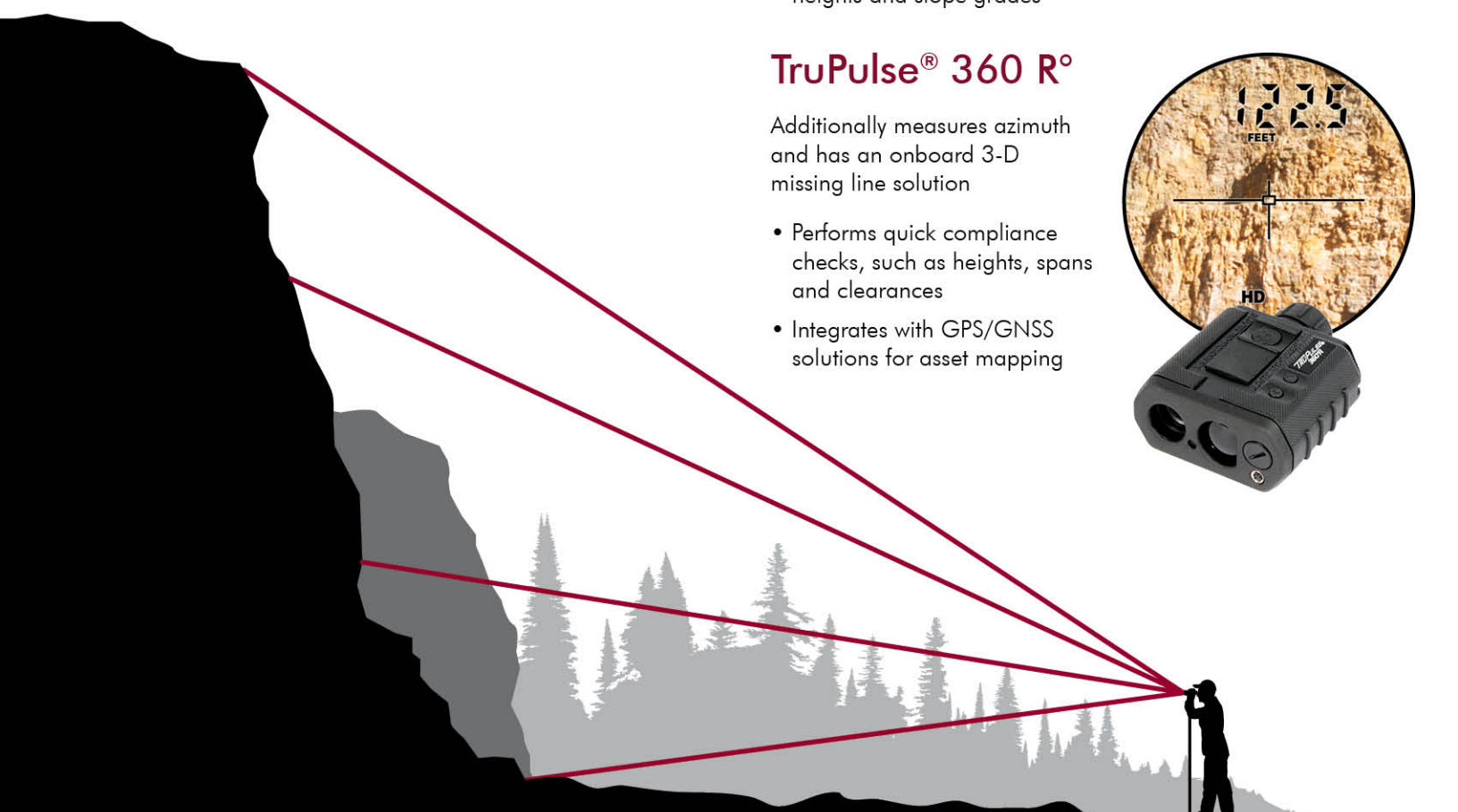
- Adjusts to varying light conditions with quality optics and in-scope LED display
- Achieves the highest distance and inclination accuracy
- Quickly measures bench heights and slope grades



### TruPulse® 360 R°

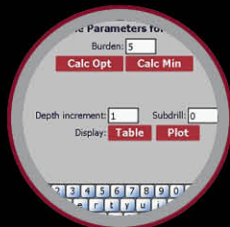
Additionally measures azimuth and has an onboard 3-D missing line solution

- Performs quick compliance checks, such as heights, spans and clearances
- Integrates with GPS/GNSS solutions for asset mapping



#### ONE-PERSON OPERATION

Save time, money and resources with a system that can be operated safely by just one person.



#### TOUCH SCREEN ACTIVATION

Face Profiler software is easy to navigate with intuitive icons and simple taps on the screen.



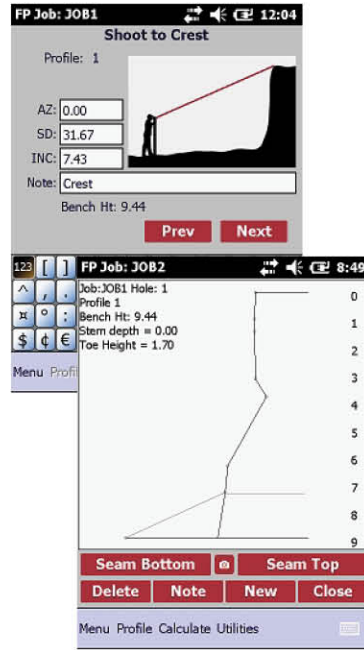
#### X, Y, Z COORDINATES

Using a TruPulse 360°/B/R with a built-in compass or a MapStar TruAngle establishes coordinates for your measurement origin.



# Interactive Profile Screen

- Tap anywhere in the profile to view depth and burden details
- Delete shots, edit the profile and measure to seams in the face
- Take a photo to enhance your profile data
- Accommodate for bench corners by shooting in multiple profiles per borehole



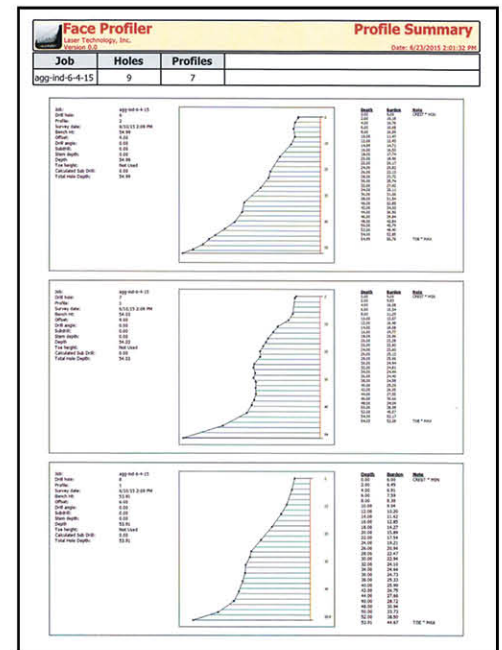
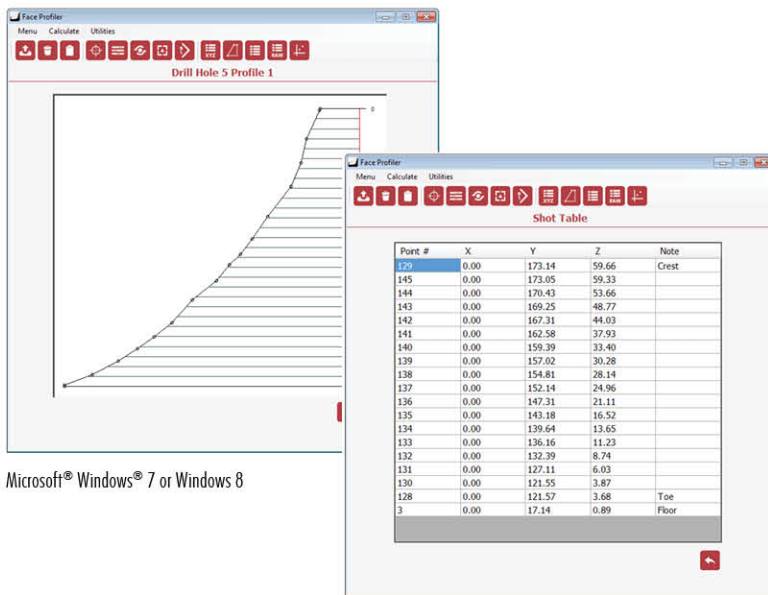
# Calculations & Adjustments

- Remove slough at toe and overburden at crest from burden calculations
- Calculate burdens by entering the hole offset or by shooting in hole location
- Determine drill hole placement and angle for a specified minimum or optimum burden
- Reshoot the crest and toe points at any time to adjust bench height



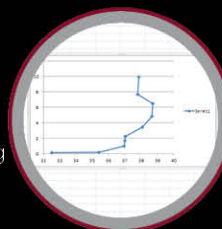
# Optional Desktop Reporting

- Calculate, adjust and print reports in the field or with a larger view on your desktop
- Print multiple profiles per page, print a detailed list of all your profiles in a single job or print to PDF
- Review and edit depth and burden data or shot coordinates at any time



## IN-FIELD CALCULATIONS

Instantly generate all the data you need in the field, without any post-processing on your desktop.



## REPORTS

Create professional reports that meet MSHA requirements. Easily transfer your field data and export it all into Excel.



## DATA COLLECTOR COMPATIBILITY

Face Profiler works on any QVGA or VGA Windows Mobile 6.0 or newer data collector.

## Software Specifications

Data Collector	
Computer Requirements for Face Profiler	Microsoft® Windows® Vista, Windows 7 or Windows 8, with Windows Mobile Device Center installed or Windows XP with Microsoft ActiveSync installed. Data Collector: Microsoft Windows Mobile 6.0 or greater
Memory and Display	300 KB memory for application Display Resolutions: QVGA (320x240) or VGA (640x480)
Connectivity	Download cable or wireless Bluetooth®
Hardware	Any Laser Technology, Inc. TruPulse® (except 200L) or Impulse 200 laser model
Supported Languages	English, French and German; templates available for additional translations

## Laser Specifications



	TruPulse® 200X	TruPulse® 360°R
Measures Azimuth with TruVector Compass Technology	No	Yes
Distance Accuracy to Typical Targets	± 4 cm (1.6 in)	± 30 cm (1 ft)
Inclination Accuracy	± 0.1° Typical	± 0.25° Typical
Max Range to Reflective Targets	2500 m (8,200 ft)	2000 m (6,560 ft)
Max Range to Non-Reflective Targets	1900 m (6,233 ft)	1000 m (3,280 ft)
Bluetooth® Compatibility	BT Classic and iOS	BT Classic
Scope Magnification / In-Scope Display Type	7× / LED	7× / LCD
Waterproof / Environmental	Yes / IP55	Yes / IP56
Size L x W x H	13 x 5 x 11 cm (5.2 x 2.1 x 4.5 in)	13 x 5 x 11 cm (5.2 x 2.1 x 4.5 in)
Weight	382 g (13.5 oz)	385 g (13.6 oz)
Available Colors	LTI Red	Black

© LTI 2015 1303 EN