



# HARVESTER

---

## PORTABLE



Defensible Automated E-Discovery  
Collection

**Harvester 5.0  
has Arrived!!**

### SEARCH AND COLLECT DISCOVERABLE DOCUMENTS AND EMAIL

Incomplete and undocumented electronic discovery collections occur every day. The result of mishandling these files can be costly to both the client and their legal counsel. Unlike other offerings, Pinpoint Labs doesn't require you to purchase additional products or services in order to facilitate a collection. Data collected with Harvester can be accessed with other popular E-Discovery tools. A simple flat rate pricing structure allows you to use the tools as often as you need without worrying about hidden fees.

**Harvester Portable** allows users to filter and defensibly collect E-Discovery files from a laptop, desktop or network locations. Harvester Portable can be run from an external hard drive or host computer. In addition to collecting data, Harvester Portable a very powerful culling tool that many use post collection to filter Microsoft Outlook PST's, and loose files by keyword, date range, and other criteria.

**Self-Collection kits** allow users to pre-configure an external hard drive with customized collection job profiles, thus allowing the job to be run by a custodian or IT professional without any prior software training or experience. The scripted jobs can identify files and emails by keyword, date range, and also perform deduplication and deNISTing. Matching items will automatically be copied back to the attached drive. Harvester Portable will run from an external drive without installing any files on the host computer. Data collected with Harvester Portable can be processed with all popular E-Discovery tools or shipped to the vendor of your choice.

### THE HARVESTER 5.0 PORTABLE UPGRADE PROVIDES:

With the release of **Harvester 5.0 Portable**, users have a greatly expanded email processing tool at their disposal. Here are a few of the new features: 64-bit Microsoft Outlook support; processing of OSTs and PSTs without Outlook installed; direct connection to Microsoft Exchange; Office 365; IMAP sources including Gmail, Yahoo and others; multi-threaded email processing; and new ESI 'Easy' Vault interface with 64-bit support.

With a growing number of corporations and government agencies moving to Google Docs, Gmail or Office 365 Outlook mail, it is important to be able to add these as sources during E-Discovery collections. **Harvester 5.0 Portable** makes it easy to add these and other web-based email accounts. The targeted email results will be saved to a PST file, allowing easy access to the offline messages.

### COMMON HARVESTER PORTABLE USES:

- ▶ Send Self-Collection hard drive
- ▶ Keyword filter client data
- ▶ Regenerate Microsoft Office PST's
- ▶ Export Keyword indexes

### HARVESTER FEATURES

- ▶ Early Data Assessment (EDA) Reports
- ▶ Search and collect email from Microsoft Exchange, Office 365, Gmail, Yahoo, Live and other webmail accounts and save to PST
- ▶ Process OST's, and PST's without using Microsoft Outlook
- ▶ Supports 64-bit Microsoft Outlook
- ▶ Harvester ESI "easy" Vault (Custodial Drag and Drop window)
- ▶ DeNIST and Dedupe
- ▶ Multi-threaded search and collection
- ▶ Set expired licenses for Harvester Portable using Portable License Manager (PLM)

**PINPOINT LABS**

PRESERVE · COLLECT · DISCOVER

▶ [WWW.PINPOINTLABS.COM](http://WWW.PINPOINTLABS.COM)

**POWERFUL E-DISCOVERY  
COLLECTION SOFTWARE**

▶ 8246 Oddo Circle ▶ Murray, NE 68409  
▶ 402.235.2381 ▶ 888.304.1096



# HARVESTER

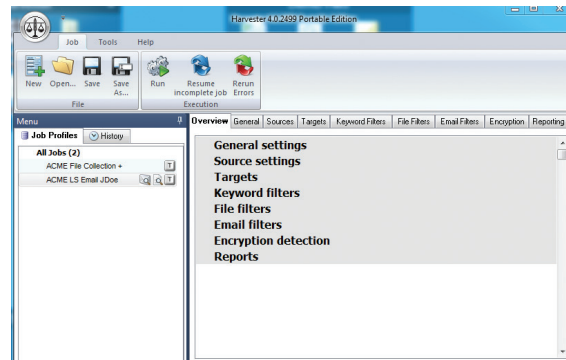
## PORTABLE



Defensible Automated E-Discovery  
Collection

### Harvester 5.0 Highlights

Redesigned interface allows all options to be easily accessed within one interface. Users can view all job tickets, keyword reports, job history, and much more! This additional user-friendly feature makes training new Harvester users much easier.



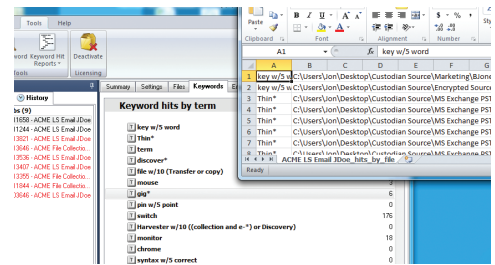
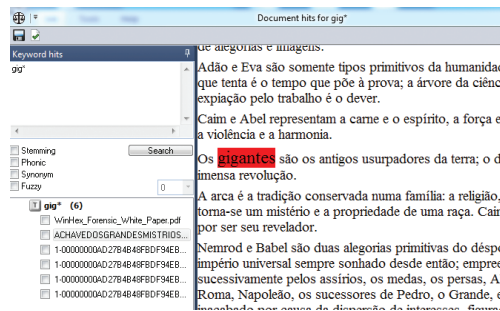
**Real Time Statistics -**  
hit preview to show what type of files you are collecting.

	Loose Files	Archived	Email Attach.	Total
Other	4 743 MB	0 / 0 Bytes	2 / 278 KB	6 / 743 MB
History and Settings Files	1 / 20.83 KB	0 / 0 Bytes	1 / 20.83 KB	1 / 20.83 KB
dot	1 / 20.83 KB	0 / 0 Bytes	0 / 0 Bytes	1 / 20.83 KB
Web Documents	1 / 37.72 KB	0 / 0 Bytes	0 / 0 Bytes	1 / 37.72 KB
htm	1 / 37.72 KB	0 / 0 Bytes	0 / 0 Bytes	1 / 37.72 KB
Database Files	5 / 2.38 MB	18 / 7.57 MB	0 / 0 Bytes	23 / 9.95 MB
mdb	2 / 768 KB	9 / 3.22 MB	0 / 0 Bytes	11 / 3.97 MB
accdb	3 / 1.63 MB	9 / 4.35 MB	0 / 0 Bytes	12 / 5.98 MB
Images	1 / 8.01 MB	1 / 150.08 KB	0 / 0 Bytes	2 / 8.16 MB
jpg	0 / 0 Bytes	1 / 150.08 KB	0 / 0 Bytes	1 / 150.08 KB
ppt	1 / 8.01 MB	0 / 0 Bytes	0 / 0 Bytes	1 / 8.01 MB
Office Documents	38 / 20.06 MB	0 / 0 Bytes	59 / 40.24 MB	97 / 60.3 MB
Email Files	5 / 643.09 MB	0 / 0 Bytes	5 / 643.09 MB	10 / 1.286 MB
Archives	2 / 1.24 MB	0 / 0 Bytes	0 / 0 Bytes	2 / 1.24 MB

**Interactive (EDA) Early Data Assessment -**  
to help scope the project users can apply search criteria with the option to uncheck any file types they are not wanting to preserve prior to finishing the collection phase.

	Loose Files	Archived	Email Attach.	Total
Office Documents	38 / 20.06 MB	0 / 0 Bytes	59 / 40.24 MB	97 / 60.3 MB
Images	1 / 8.01 MB	0 / 0 Bytes	0 / 0 Bytes	1 / 8.01 MB
Email Files	1 / 8.01 MB	0 / 0 Bytes	0 / 0 Bytes	1 / 8.01 MB
Other	4 / 7.43 MB	0 / 0 Bytes	2 / 278 KB	6 / 7.43 MB
Database Files	5 / 2.38 MB	0 / 0 Bytes	0 / 0 Bytes	5 / 2.38 MB
Archives	2 / 1.24 MB	0 / 0 Bytes	0 / 0 Bytes	2 / 1.24 MB

**Keyword hit highlighting**  
allowing you to verify what keywords and how many hits are located within each document. You can then cull your data down further by conducting an additional **keyword search**. This is great for creating subsets and whittling down false positives.



**Keyword hit reports** can be saved in 4 different formats - essential in attorney review.